

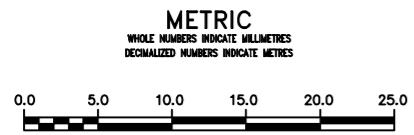
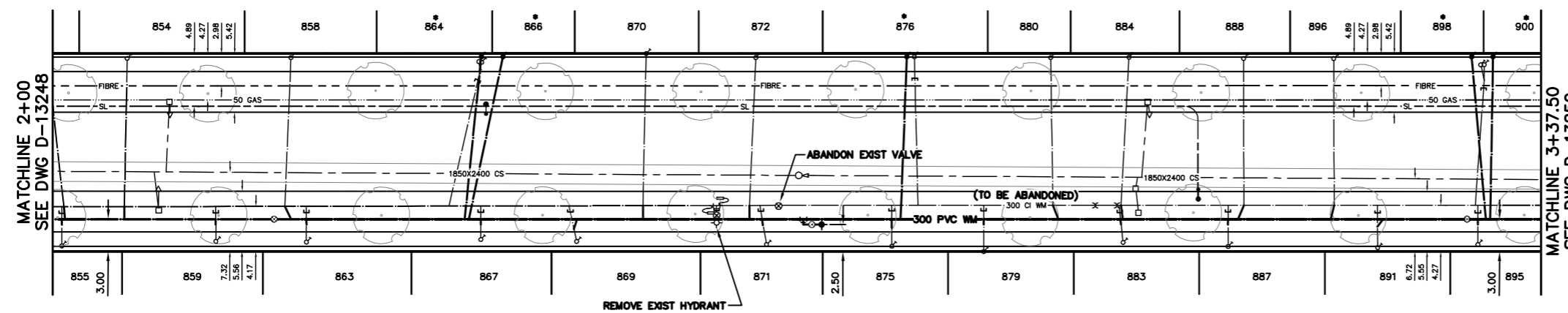
NOTE: CHAINAGES SHOWN ARE ALONG E. R. OF CLIFTON ST.

CLIFTON STREET



WATER SERVICE INFORMATION					
ADDRESS	SIZE (mm) MATERIAL (STREET)	SIZE (mm) MATERIAL (PROP.)	SHORT & LONG MEASUREMENT	CORP. LOCATION	REMARKS
854 CLIFTON ST	20 COPPER	20 COPPER	9.2 SNL HSE	0.2 S OF S/C	RECONNECT SERVICE
855 CLIFTON ST	20 COPPER	20 COPPER	106.9 NNL ST. MATTHEWS	0.2 S OF S/C	RECONNECT SERVICE
856 CLIFTON ST	20 COPPER	20 COPPER	3.5 SNL HSE	OPP S/C	RECONNECT SERVICE
857 CLIFTON ST	20 COPPER	20 COPPER	100.8 NNL ST. MATTHEWS	0.5 S OF S/C	RECONNECT SERVICE
858 CLIFTON ST	20 COPPER	20 COPPER	7.0 SNL HSE	OPP S/C	RECONNECT SERVICE
859 CLIFTON ST	20 COPPER	20 COPPER	122.0 NNL ST. MATTHEWS	0.5 S OF S/C	RECONNECT SERVICE
860 CLIFTON ST	20 COPPER	20 COPPER	2.1 SNL HSE	OPP S/C	RECONNECT SERVICE
861 CLIFTON ST	20 COPPER	20 COPPER	115.0 NNL ST. MATTHEWS	OPP S/C	RECONNECT SERVICE
862 CLIFTON ST	20 COPPER	20 COPPER	7.8 SNL HSE	OPP S/C	RECONNECT SERVICE
863 CLIFTON ST	20 COPPER	20 COPPER	123.4 NNL ST. MATTHEWS	OPP S/C	RECONNECT SERVICE
864 CLIFTON ST	16 LEAD	12 LEAD	0.5 SNL HSE	2.7 S OF S/C	RENEW TO R WYED SERV. W/#866
865 CLIFTON ST	16 LEAD	12 LEAD	8.2 SNL HSE	3.0 S OF S/C	RENEW TO R WYED SERV. W/#864
866 CLIFTON ST	20 COPPER	20 COPPER	139.6 NNL ST. MATTHEWS	OPP S/C	RECONNECT SERVICE
867 CLIFTON ST	20 COPPER	20 COPPER	139.5 NNL ST. MATTHEWS	OPP S/C	RECONNECT SERVICE
868 CLIFTON ST	20 COPPER	20 COPPER	139.5 NNL ST. MATTHEWS	OPP S/C	RECONNECT SERVICE
869 CLIFTON ST	20 COPPER	20 COPPER	9.4 SNL HSE	0.7 S OF S/C	RECONNECT SERVICE
870 CLIFTON ST	20 COPPER	20 COPPER	148.4 NNL ST. MATTHEWS	0.7 S OF S/C	RECONNECT SERVICE
871 CLIFTON ST	20 COPPER	20 COPPER	4.2 SNL HSE	0.3 S OF S/C	RECONNECT SERVICE
872 CLIFTON ST	20 COPPER	20 COPPER	154.8 NNL ST. MATTHEWS	0.6 S OF S/C	RECONNECT SERVICE
873 CLIFTON ST	20 COPPER	20 COPPER	4.8 SNL HSE	0.6 S OF S/C	RECONNECT SERVICE
874 CLIFTON ST	20 COPPER	20 COPPER	165.9 NNL ST. MATTHEWS	0.6 S OF S/C	RECONNECT SERVICE
875 CLIFTON ST	20 COPPER	20 COPPER	5.7 SNL HSE	0.6 S OF S/C	RECONNECT SERVICE
876 CLIFTON ST	20 COPPER	20 COPPER	165.0 NNL ST. MATTHEWS	0.6 S OF S/C	RECONNECT SERVICE
877 CLIFTON ST	20 COPPER	20 COPPER	177.5 NNL ST. MATTHEWS	OPP S/C	RECONNECT SERVICE
878 CLIFTON ST	12 LEAD	20 COPPER	0.3 NSL HSE	0.3 N OF S/C	RENEW TO R
879 CLIFTON ST	20 COPPER	20 COPPER	179.6 NNL ST. MATTHEWS	0.3 N OF S/C	RECONNECT SERVICE
880 CLIFTON ST	20 COPPER	20 COPPER	6.8 SNL HSE	OPP S/C	RECONNECT SERVICE
881 CLIFTON ST	20 COPPER	20 COPPER	186.0 NNL ST. MATTHEWS	OPP S/C	RECONNECT SERVICE
882 CLIFTON ST	20 COPPER	20 COPPER	0.9 SNL HSE	0.1 N OF S/C	RECONNECT SERVICE
883 CLIFTON ST	20 COPPER	20 COPPER	192.2 NNL ST. MATTHEWS	0.3 S OF S/C	RECONNECT SERVICE
884 CLIFTON ST	20 COPPER	20 COPPER	5.7 SNL HSE	0.3 S OF S/C	RECONNECT SERVICE
885 CLIFTON ST	20 COPPER	20 COPPER	198.8 NNL ST. MATTHEWS	0.7 S OF S/C	RECONNECT SERVICE
886 CLIFTON ST	20 COPPER	20 COPPER	3.2 NSL HSE	0.7 S OF S/C	RECONNECT SERVICE
887 CLIFTON ST	20 COPPER	20 COPPER	136.8 SSL ELLICE	OPP S/C	RECONNECT SERVICE
888 CLIFTON ST	20 COPPER	20 COPPER	7.5 SNL HSE	OPP S/C	RECONNECT SERVICE
889 CLIFTON ST	20 COPPER	20 COPPER	127.8 SSL ELLICE	OPP S/C	RECONNECT SERVICE
890 CLIFTON ST	20 COPPER	20 COPPER	4.4 NSL HSE	OPP S/C	RECONNECT SERVICE
891 CLIFTON ST	20 COPPER	20 COPPER	126.2 SSL ELLICE	OPP S/C	RECONNECT SERVICE
892 CLIFTON ST	20 COPPER	20 COPPER	5.2 SNL HSE	OPP S/C	RECONNECT SERVICE
893 CLIFTON ST	20 COPPER	20 COPPER	113.8 SSL ELLICE	OPP S/C	RECONNECT SERVICE
894 CLIFTON ST	20 COPPER	20 COPPER	7.8 SNL HSE	OPP S/C	RECONNECT SERVICE
895 CLIFTON ST	20 COPPER	20 COPPER	104.6 SSL ELLICE	OPP S/C	RECONNECT SERVICE
896 CLIFTON ST	20 COPPER	20 COPPER	2.4 NSL HSE	0.5 S OF S/C	RENEW TO R WYED SERV. W/#900
897 CLIFTON ST	16 LEAD	12 LEAD	104.3 SSL ELLICE	0.5 S OF S/C	RENEW TO R WYED SERV. W/#900
898 CLIFTON ST	16 LEAD	12 LEAD	104.0 SSL ELLICE	0.8 S OF S/C	RENEW TO R WYED SERV. W/#898

* SERVICES TO BE RENEWED TO R. ALL OTHERS TO BE RECONNECTED



WARNING
IF POWER EQUIPMENT OR EXPLOSIVES ARE TO BE USED FOR EXCAVATION ON THIS PROJECT THE CONTRACTOR MUST:
1) NOTIFY THE GAS COMPANY OF THE PROPOSED LOCATION OF EXCAVATION.
2) TAKE PRECAUTION TO AVOID DAMAGE TO GAS COMPANY INSTALLATIONS.
SEE PROVINCIAL REGULATION 210/72 FOR DETAILS

LOCATION APPROVED UNDERGROUND STRUCTURES
SUPV. U/G STRUCTURES COMMITTEE DATE
NOTE:
LOCATION OF UNDERGROUND STRUCTURES AS SHOWN ARE BASED ON THE BEST INFORMATION AVAILABLE BUT NO GUARANTEE IS GIVEN THAT ALL EXISTING UTILITIES ARE SHOWN OR THAT THE GIVEN LOCATIONS ARE EXACT. CONFIRMATION OF EXISTENCE AND EXACT LOCATION OF ALL SERVICES MUST BE OBTAINED FROM THE INDIVIDUAL UTILITIES BEFORE PROCEEDING WITH CONSTRUCTION.

B.M. ELEV.	
CONSTRUCTION COMPLETION DATE: YYYY MM DD	
DESIGNED BY	MK
CHECKED BY	SC
DRAWN BY	CJH/RS
APPROVED BY	KZ
SCALE:	
HORIZONTAL	1:250
VERTICAL	1:50
RELEASED FOR CONSTRUCTION	K.R. ZUREK
DATE	2013 05 27
DATE	13-05-28
PLOT DATE:	2013 05 28

ENGINEER'S SEAL
ORIGINAL SIGNED BY S.R.J. COURNOYER 13-05-27
CONSULTANT DRAWING NUMBER

THE CITY OF WINNIPEG
WATER AND WASTE DEPARTMENT
ENGINEERING DIVISION
2013 WATER RENEWALS
CLIFTON STREET
100 N OF ST MATTHEWS AVENUE TO
237.5 N OF ST MATTHEWS AVENUE
SHEET 7 OF 11
CITY DRAWING NUMBER
D-13249