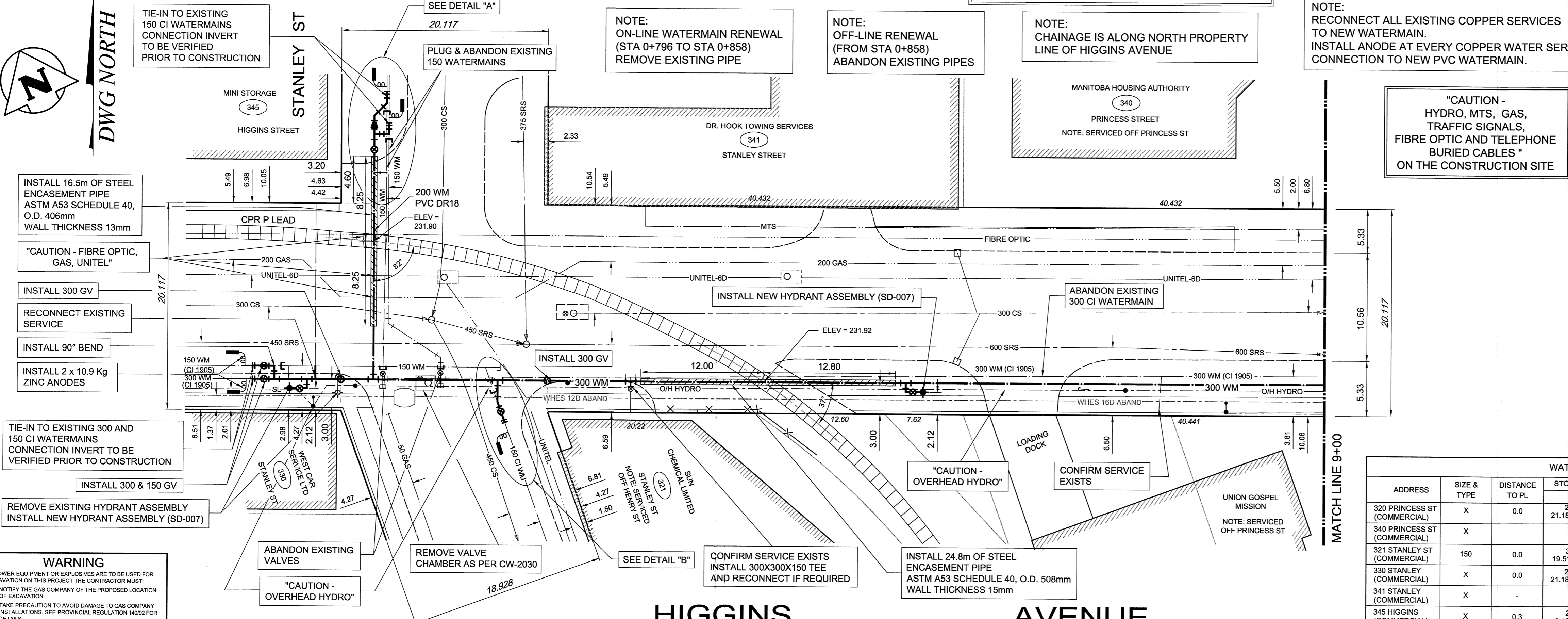


GENERAL NOTES - WATERMAIN CROSSING OF C.P.R. PROPERTY
 PIPELINE CROSSING TO BE CONSTRUCTED AND MAINTAINED IN ACCORDANCE WITH THE CANADIAN TRANSPORTATION AGENCY GENERAL ORDER E-10 AND CPR SPEC. SP-TS-2.39.
 THE CONTRACTOR SHALL BE RESPONSIBLE FOR COORDINATING HIS WORK WITH THE RAILWAY COMPANY AND SHALL NOTIFY, IN WRITING, THE LOCAL RAILWAY SUPERINTENDENT AT LEAST (3) WORKING DAYS IN ADVANCE OF WHEN HE INTENDS TO DO ANY WORK WITHIN THE C.P.R. PROPERTY AND SHALL BE GOVERNED BY THEIR REQUIREMENTS.
 PERMIT REQUIRED FROM CPR BEFORE WORK CAN COMMENCE

NOTE:
 HIGH PEDESTRIAN AND WHEELCHAIR TRAFFIC TO THIS AREA. CONTRACTOR TO PROVIDE HIGHER THAN TYPICAL LEVEL OF PUBLIC ACCESS AND SECURITY



- CONSTRUCTION NOTES:**
1. WATERMAIN TO HAVE 2.5m COVER FROM CENTRELINE OF ROAD.
 2. ALL CURB REPLACEMENT TO MATCH EXISTING CURB.
 3. ALL EXISTING WATERMANS AT CONNECTION LOCATIONS ARE TO HAVE INVERTS VERIFIED PRIOR TO CONSTRUCTION.
 4. INSTALL ALL HYDRANTS WITH FLANGE ELEVATION FROM 50mm TO 150mm ABOVE FINISHED GRADE.
 5. SALVAGE ALL EXISTING HYDRANT ASSEMBLIES AND VALVES WHEN DIRECTED BY THE CONTRACT ADMINISTRATOR AND RETURN TO THE CITY YARD. ABANDON THE REMAINING VALVES (AND/OR VALVE BOXES) AND HYDRANT ASSEMBLIES.
 6. INSTALL WATERMAIN BY TRENCHLESS METHODS UNDER ALL PAVEMENTS, TREES, LIGHT STANDARDS, AND OTHER APPURTENANCES.
 7. LOCATION OF ALL SERVICES TO BE CONFIRMED IN FIELD.
 8. RENEW ALL LEAD WATER CONNECTIONS UP TO THE PROPERTY LINE WITH 19mm COPPER WATER CONNECTIONS UNLESS RENEWAL SIZE IS OTHERWISE NOTED.
 9. ALL VALVES SHALL TURN COUNTER CLOCKWISE TO CLOSE WITH RED OPERATING NUT.
 10. ALL BACKFILL UNDER AND WITHIN 1.0m OF PAVEMENT OR SIDEWALK SHALL BE CLASS 3.
 11. ALL BACKFILL UNDER BOULEVARD SHALL BE CLASS 5.
 12. ABANDON SERVICES NO LONGER IN USE WHERE DIRECTED BY CONTRACT ADMINISTRATOR.
 13. CONTRACTOR TO NOTIFY BUSINESSES AND RESIDENTS A MINIMUM OF 24 HOURS PRIOR TO ANY DISRUPTION TO WATER SERVICE.

GENERAL NOTES

1. STATION 1+000 = NORTHWEST PROPERTY LINE OF KING STREET.

WATER CONNECTION DATA					
ADDRESS	SIZE & TYPE	DISTANCE TO PL	STOP COCK LOCATION		COMMENTS
			SHORT / LONG	CORPORATION COCK LOCATION	
320 PRINCESS ST (COMMERCIAL)	X	0.0	20.88 SNL BLDG	3.2 S OF SIC	SERVICE FROM PRINCESS ST
340 PRINCESS ST (COMMERCIAL)	X	-	21.18 SSL HIGGINS AVE	-	NO SERVICE RECORDS
321 STANLEY ST (COMMERCIAL)	150	0.0	3.51 WEL BLDG	0.3 E OF SIC	SERVICED FROM HENRY AVE
330 STANLEY (COMMERCIAL)	X	0.0	20.88 SNL BLDG	3.2 S OF SIC	SERVICE FROM PRINCESS ST
341 STANLEY (COMMERCIAL)	X	-	21.18 SSL HIGGINS AVE	-	NO SERVICE RECORDS
345 HIGGINS (COMMERCIAL)	X	0.3	2.43 WEL BLDG	OPP S/C	SERVICED FROM HIGGINS AVE

APEGM
 Certificate of Authorization
TETRA TECH WEI Inc.
 No. 5313 Date: April 30, 2014

EXISTING	LEGEND-PLAN	PROPOSED	EXISTING	LEGEND-PLAN	PROPOSED	EXISTING	LEGEND-PLAN	PROPOSED
150 WM	WATERMAIN	150 WM	BEND	ANCHOR	ANCHOR	400 FM	FEEDERMAIN	400 FM
300 LPS	LAND DRAINAGE SEWER	300 LPS	TEE	TREE	TREE	250 WWS	WASTEWATER SEWER	250 WWS
300 CS	COMBINED SEWER	300 CS	CURB STOP	LEGAL DIMENSION	LEGAL DIMENSION	200 FCM	FORCEMAIN	200 FCM
300 CS	COMBINED SEWER	300 CS	PLUG	SURVEY BAR	SURVEY BAR	300 CS	COMBINED SEWER	300 CS
200 FCM	FORCEMAIN	200 FCM	MANHOLE	TRAFFIC SIGNAL	TRAFFIC SIGNAL	300 CS	COMBINED SEWER	300 CS
300 CS	COMBINED SEWER	300 CS	CATCHBASIN	GAS	GAS	200 FCM	FORCEMAIN	200 FCM
300 CS	COMBINED SEWER	300 CS	CURB INLET	HYDRO	HYDRO	300 CS	COMBINED SEWER	300 CS
300 CS	COMBINED SEWER	300 CS	ADDRESS	MTS	MTS	200 FCM	FORCEMAIN	200 FCM
300 CS	COMBINED SEWER	300 CS	HYDRO POLE	SIDEWALK	SIDEWALK	300 CS	COMBINED SEWER	300 CS
300 CS	COMBINED SEWER	300 CS	LIGHT STANDARD	CURB	CURB	200 FCM	FORCEMAIN	200 FCM

LOCATION APPROVED UNDERGROUND STRUCTURES		B.M. CITY OF WINNIPEG ELEV.	
SUPV. U/G STRUCTURES COMMITTEE	DATE		
NOTE: LOCATION OF UNDERGROUND STRUCTURES AS SHOWN ARE BASED ON THE BEST INFORMATION AVAILABLE. BUT NO GUARANTEE IS GIVEN THAT ALL EXISTING UTILITIES ARE SHOWN OR THAT THE GIVEN LOCATIONS ARE EXACT. CONFIRMATION OF EXISTENCE AND EXACT LOCATION OF ALL SERVICES MUST BE OBTAINED FROM THE INDIVIDUAL UTILITIES BEFORE PROCEEDING WITH CONSTRUCTION.			

TETRA TECH

DESIGNED BY: GWC
 CHECKED BY: KJM
 DRAWN BY: NL
 APPROVED BY: GS
 HOR. SCALE: 1 : 250
 VERTICAL: 1 : 50
 DATE: 2013.04.15

THE CITY OF WINNIPEG
 WATER AND WASTE DEPARTMENT

2013 WATERMAIN RENEWALS - CONTRACT 8
 HIGGINS AVENUE
 STANLEY STREET TO
 76m EAST OF STANLEY STREET

CITY DRAWING NUMBER: D-13222
 SHEET: 1 OF 10
 C0001

CONSULTANT DRAWING NO. 1300120300-DWG-C0001