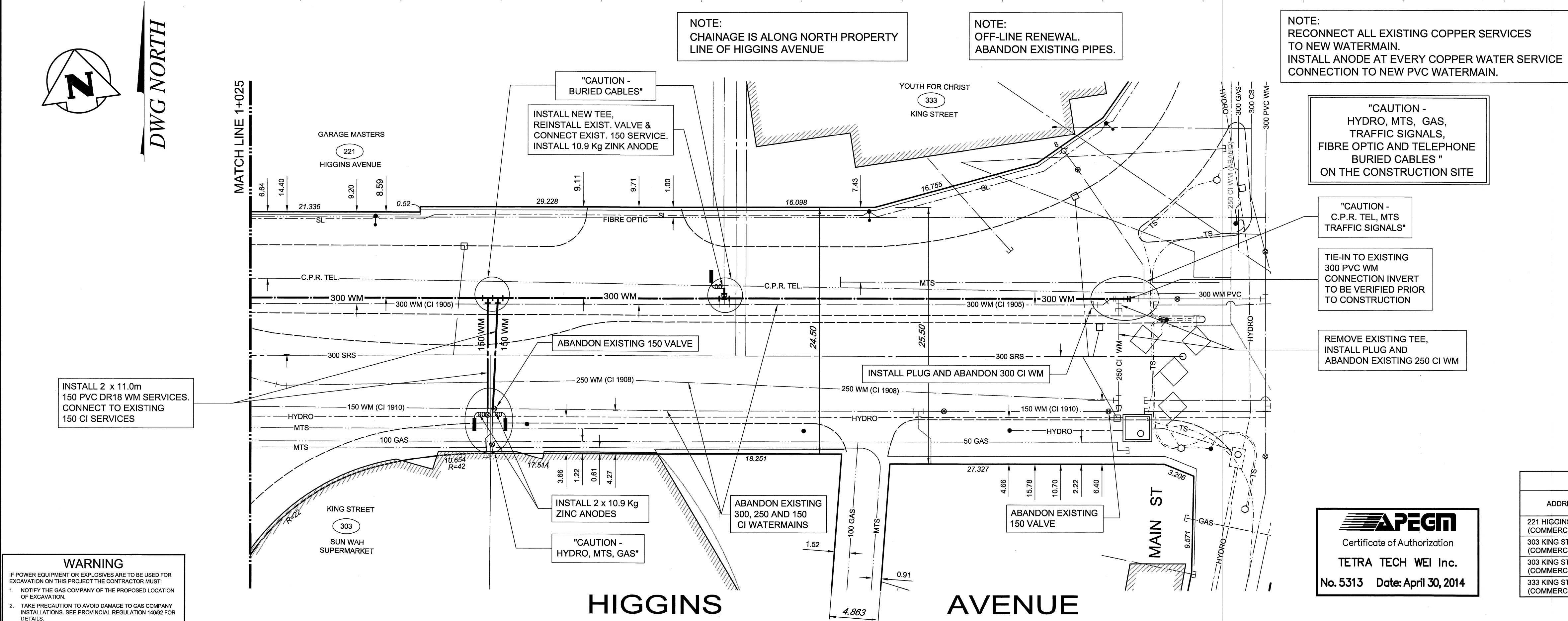


CONSTRUCTION NOTES:

1. WATERMAIN TO HAVE 2.5m COVER FROM CENTRELINE OF ROAD.
2. ALL CURB REPLACEMENT TO MATCH EXISTING CURB.
3. ALL EXISTING WATERMAINS AT CONNECTION LOCATIONS ARE TO HAVE INVERTS VERIFIED PRIOR TO CONSTRUCTION.
4. INSTALL ALL HYDRANTS WITH FLANGE ELEVATION FROM 50mm TO 150mm ABOVE FINISHED GRADE.
5. SALVAGE ALL EXISTING HYDRANT ASSEMBLIES AND VALVES WHEN DIRECTED BY THE CONTRACT ADMINISTRATOR AND RETURN TO THE CITY YARD. ABANDON THE REMAINING VALVES (AND/OR VALVE BOXES) AND HYDRANT ASSEMBLIES.
6. INSTALL WATERMAIN BY TRENCHLESS METHODS UNDER ALL PAVEMENTS, TREES, LIGHT STANDARDS, AND OTHER APPURTENANCES.
7. LOCATION OF ALL SERVICES TO BE CONFIRMED IN FIELD.
8. RENEW ALL LEAD WATER CONNECTIONS UP TO THE PROPERTY LINE WITH 19mm COPPER WATER CONNECTIONS UNLESS RENEWAL SIZE IS OTHERWISE NOTED.
9. ALL VALVES SHALL TURN COUNTER CLOCKWISE TO CLOSE WITH RED OPERATING NUT.
10. ALL BACKFILL UNDER AND WITHIN 1.0m OF PAVEMENT OR SIDEWALK SHALL BE CLASS 3.
11. ALL BACKFILL UNDER BOULEVARD SHALL BE CLASS 5.
12. ABANDON SERVICES NO LONGER IN USE WHERE DIRECTED BY CONTRACT ADMINISTRATOR.
13. CONTRACTOR TO NOTIFY BUSINESSES AND RESIDENTS A MINIMUM OF 24 HOURS PRIOR TO ANY DISRUPTION TO WATER SERVICE.

GENERAL NOTES

1. STATION 1+000 = NORTH/WEST PROPERTY LINE OF KING STREET.



INSTALL 2 x 11.0m 150 PVC DR18 WM SERVICES. CONNECT TO EXISTING 150 CI SERVICES

"CAUTION - BURIED CABLES"
INSTALL NEW TEE, REINSTALL EXIST. VALVE & CONNECT EXIST. 150 SERVICE. INSTALL 10.9 Kg ZINC ANODE

NOTE: CHAINAGE IS ALONG NORTH PROPERTY LINE OF HIGGINS AVENUE

NOTE: OFF-LINE RENEWAL. ABANDON EXISTING PIPES.

NOTE: RECONNECT ALL EXISTING COPPER SERVICES TO NEW WATERMAIN. INSTALL ANODE AT EVERY COPPER WATER SERVICE CONNECTION TO NEW PVC WATERMAIN.

"CAUTION - HYDRO, MTS, GAS, TRAFFIC SIGNALS, FIBRE OPTIC AND TELEPHONE BURIED CABLES" ON THE CONSTRUCTION SITE

"CAUTION - C.P.R. TEL, MTS TRAFFIC SIGNALS"

TIE-IN TO EXISTING 300 PVC WM CONNECTION INVERT TO BE VERIFIED PRIOR TO CONSTRUCTION

REMOVE EXISTING TEE, INSTALL PLUG AND ABANDON EXISTING 250 CI WM

WARNING
IF POWER EQUIPMENT OR EXPLOSIVES ARE TO BE USED FOR EXCAVATION ON THIS PROJECT THE CONTRACTOR MUST:
1. NOTIFY THE GAS COMPANY OF THE PROPOSED LOCATION OF EXCAVATION.
2. TAKE PRECAUTION TO AVOID DAMAGE TO GAS COMPANY INSTALLATIONS. SEE PROVINCIAL REGULATION 1406Z FOR DETAILS.

APEGM
Certificate of Authorization
TETRA TECH WEI Inc.
No. 5313 Date: April 30, 2014

WATER CONNECTION DATA					
ADDRESS	SIZE & TYPE	DISTANCE TO PL.	STOP COCK LOCATION SHORT / LONG	CORPORATION COCK LOCATION	COMMENTS
221 HIGGINS AVE (COMMERCIAL)	X	-	-	-	NO SERVICE RECORDS
303 KING ST (COMMERCIAL)	X	0.45	16.46 WEL OF BLDG 28.96 EEL OF KING ST	OPP SIC	SERVICED FROM HIGGINS AVE
303 KING ST (COMMERCIAL)	150	3.2	16.76 WEL OF BLDG 28.66 EEL OF KING ST	OPP SIC	SERVICED FROM HIGGINS AVE
333 KING ST (COMMERCIAL)	150	8.80	48.7 W MLV AT MAIN ST	OPP SIC	SERVICED FROM HIGGINS AVE

150 WM	WATERMAIN	150 WM	BEND	ANCHOR
400 FM	FEEDERMAIN	400 FM	TEE	TREE
300 LDS	LAND DRAINAGE SEWER	300 LDS	CURB STOP	LEGAL DIMENSION
250 WWS	WASTEWATER SEWER	250 WWS	PLUG	SURVEY BAR
300 CS	COMBINED SEWER	300 CS	MANHOLE	TRAFFIC SIGNAL
200 FCM	FORCEMAIN	200 FCM	CATCHBASIN	GAS
	JUNCTIONS		CURB INLET	HYDRO
	HYDRANT		ADDRESS	MTS
	VALVE		HYDRO POLE	SIDEWALK
	REDUCER		LIGHT STANDARD	CURB
EXISTING	LEGEND-PLAN	PROPOSED	LEGEND-PLAN	PROPOSED

LOCATION APPROVED UNDERGROUND STRUCTURES
SUPV. U/G STRUCTURES COMMITTEE DATE
NOTE: LOCATION OF UNDERGROUND STRUCTURES AS SHOWN ARE BASED ON THE BEST INFORMATION AVAILABLE. BUT NO GUARANTEE IS GIVEN THAT ALL EXISTING UTILITIES ARE SHOWN OR THAT THE GIVEN LOCATIONS ARE EXACT. CONFIRMATION OF EXISTENCE AND EXACT LOCATION OF ALL SERVICES MUST BE OBTAINED FROM THE INDIVIDUAL UTILITIES BEFORE PROCEEDING WITH CONSTRUCTION.

B.M. ELEV.	CITY OF WINNIPEG
01	ISSUED FOR TENDER 13.05.07
00	ISSUED FOR APPROVAL 13.05.06
NO.	REVISIONS DATE BY

TETRA TECH	
DESIGNED BY GWC	CHECKED BY KJM
DRAWN BY NL	APPROVED BY GS
HOR. SCALE: 1:250	RELEASED FOR CONSTRUCTION
VERTICAL: 1:50	DATE 2013.04.15



THE CITY OF WINNIPEG
WATER AND WASTE DEPARTMENT

2013 WATERMAIN RENEWALS - CONTRACT 8
HIGGINS AVENUE
5m EAST OF KING STREET
TO MAIN STREET

CITY DRAWING NUMBER D-13224
SHEET 3 OF 10
CONSULTANT DRAWING NO. 1300120300-DWG-C0003

BID OPPORTUNITY No. 371-2013