

- CONSTRUCTION NOTES:**
1. WATERMAIN TO HAVE 2.5m COVER FROM CENTRELINE OF ROAD.
 2. ALL CURB REPLACEMENT TO MATCH EXISTING CURB.
 3. ALL EXISTING WATERMAINS AT CONNECTION LOCATIONS ARE TO HAVE INVERTS VERIFIED PRIOR TO CONSTRUCTION.
 4. INSTALL ALL HYDRANTS WITH FLANGE ELEVATION FROM 50mm TO 150mm ABOVE FINISHED GRADE.
 5. SALVAGE ALL EXISTING HYDRANT ASSEMBLIES AND VALVES WHEN DIRECTED BY THE CONTRACT ADMINISTRATOR AND RETURN TO THE CITY YARD. ABANDON THE REMAINING VALVES (AND/OR VALVE BOXES) AND HYDRANT ASSEMBLIES.
 6. INSTALL WATERMAIN BY TRENCHLESS METHODS UNDER ALL PAVEMENTS, TREES, LIGHT STANDARDS, AND OTHER APPURTENANCES.
 7. LOCATION OF ALL SERVICES TO BE CONFIRMED IN FIELD.
 8. RENEW ALL LEAD WATER CONNECTIONS UP TO THE PROPERTY LINE WITH 19mm COPPER WATER CONNECTIONS UNLESS RENEWAL SIZE IS OTHERWISE NOTED.
 9. ALL VALVES SHALL TURN COUNTER CLOCKWISE TO CLOSE WITH RED OPERATING NUT.
 10. ALL BACKFILL UNDER AND WITHIN 1.0m OF PAVEMENT OR SIDEWALK SHALL BE CLASS 3.
 11. ALL BACKFILL UNDER BOULEVARD SHALL BE CLASS 5.
 12. ABANDON SERVICES NO LONGER IN USE WHERE DIRECTED BY CONTRACT ADMINISTRATOR.
 13. CONTRACTOR TO NOTIFY BUSINESSES AND RESIDENTS A MINIMUM OF 24 HOURS PRIOR TO ANY DISRUPTION TO WATER SERVICE.

GENERAL NOTES

1. STATION 1+00 = NORTHEAST PROPERTY LINE OF HENRY AVENUE.

WATER CONNECTION DATA					
ADDRESS	SIZE & TYPE	DISTANCE TO PL	STOP COCK LOCATION SHORT / LONG	CORPORATION COCK LOCATION	COMMENTS
270 HIGGINS AVE (COMMERCIAL)	X	-	-	-	NO SERVICE RECORDS
303 KING ST (COMMERCIAL)	X	0.45	18.46 WEL OF BLDG 28.98 EEL OF KING ST	OPP S/C	SERVICED FROM HIGGINS AVE
303 KING ST (COMMERCIAL)	X	150	18.78 WEL OF BLDG 28.66 EEL OF KING ST	OPP S/C	SERVICED FROM HIGGINS AVE
221 HIGGINS AVE (COMMERCIAL)	X	-	-	-	NO SERVICE RECORDS
328 KING ST (COMMERCIAL)	X	0.95	8.6 NSL OF BLDG 23.58>NNL OF HIGGINS AVE	3.2 S OF S/C	SERVICED FROM KING ST



NOTE: OFF-LINE RENEWAL. ABANDON EXISTING PIPE

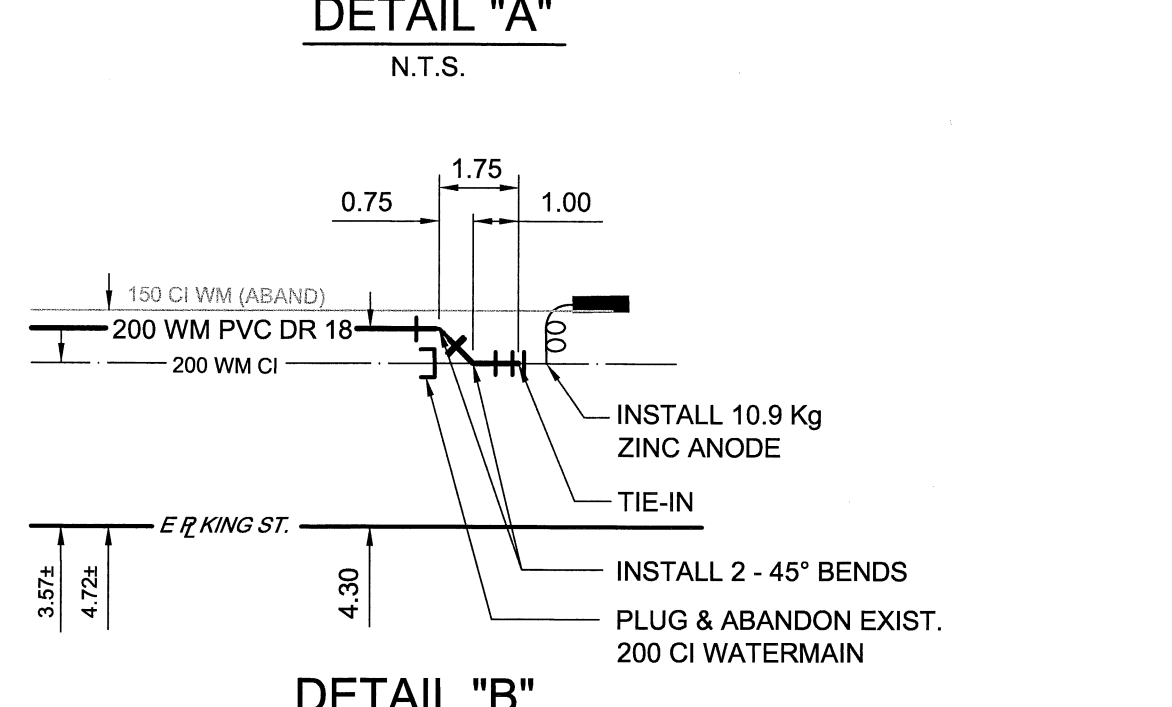
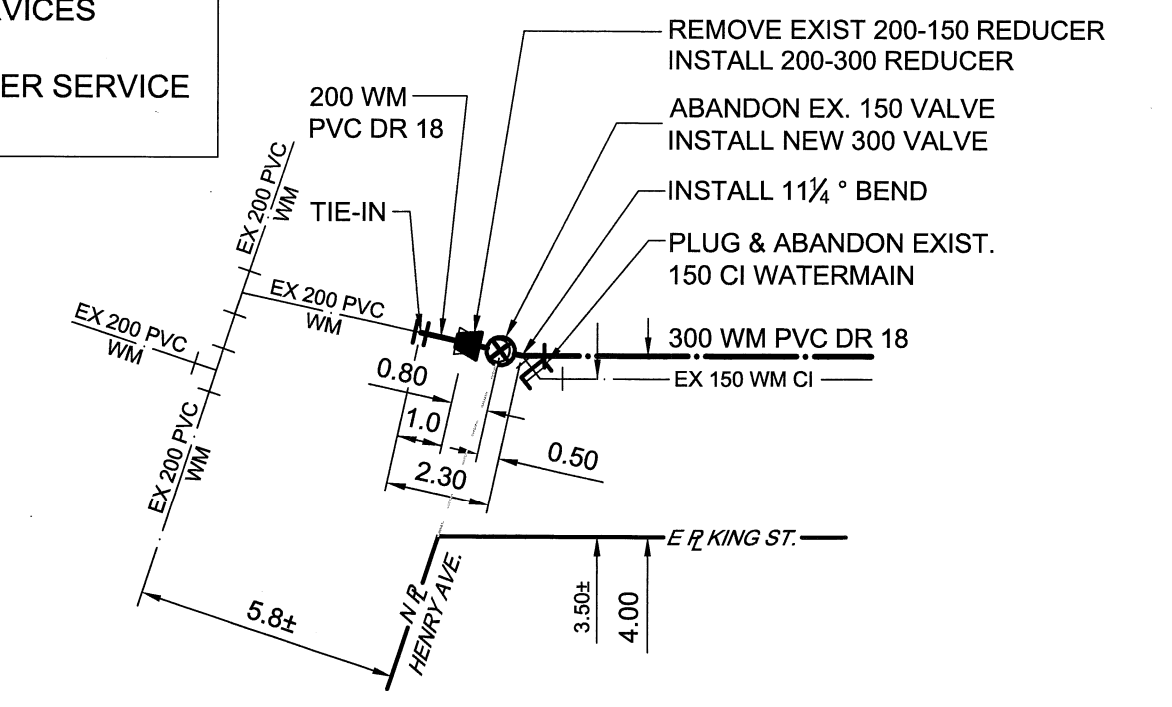
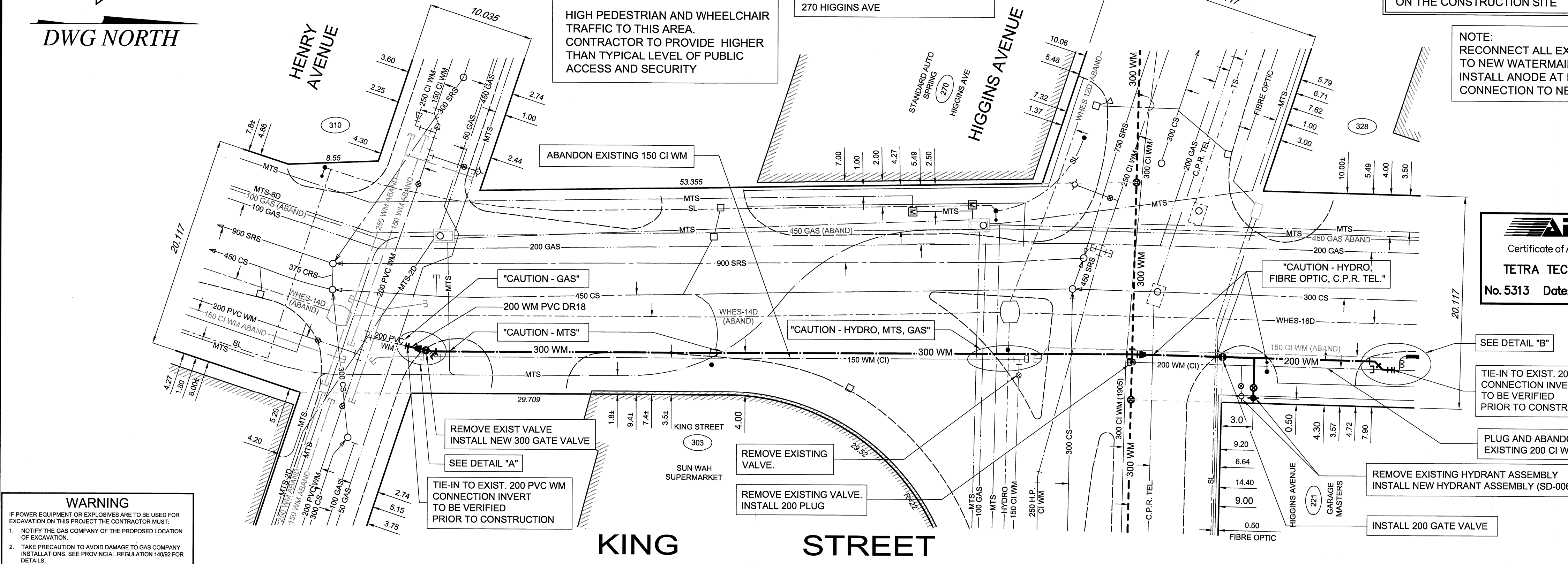
NOTE: CHAINAGE IS ALONG EAST PROPERTY LINE OF KING STREET.

NOTE: CONTRACTOR TO CONFIRM IN THE FIELD LOCATION OF WATER SERVICE FOR 270 HIGGINS AVE

NOTE: HIGH PEDESTRIAN AND WHEELCHAIR TRAFFIC TO THIS AREA. CONTRACTOR TO PROVIDE HIGHER THAN TYPICAL LEVEL OF PUBLIC ACCESS AND SECURITY

"CAUTION - HYDRO, MTS, GAS, TRAFFIC SIGNALS, FIBRE OPTIC AND TELEPHONE BURIED CABLES" ON THE CONSTRUCTION SITE

NOTE: RECONNECT ALL EXISTING COPPER SERVICES TO NEW WATERMAIN. INSTALL ANODE AT EVERY COPPER WATER SERVICE CONNECTION TO NEW PVC WATERMAIN.



WARNING
IF POWER EQUIPMENT OR EXPLOSIVES ARE TO BE USED FOR EXCAVATION ON THIS PROJECT THE CONTRACTOR MUST:
1. NOTIFY THE GAS COMPANY OF THE PROPOSED LOCATION OF EXCAVATION.
2. TAKE PRECAUTION TO AVOID DAMAGE TO GAS COMPANY INSTALLATIONS. SEE PROVINCIAL REGULATION 140/92 FOR DETAILS.

150 WM	150 WM	150 WM	150 WM	150 WM	150 WM	150 WM	150 WM
WATERMAIN	FEEDERMAIN	LAND DRAINAGE SEWER	WASTEWATER SEWER	COMBINED SEWER	FORCEMAIN	JUNCTIONS	HYDRANT
400 FM	400 FM	300 LDS	250 WWS	300 CS	200 FCM	200 FCM	VALVE
REDUCER	REDUCER	REDUCER	REDUCER	REDUCER	REDUCER	REDUCER	REDUCER
EXISTING	LEGEND-PLAN	PROPOSED	EXISTING	LEGEND-PLAN	PROPOSED	EXISTING	LEGEND-PLAN

LOCATION APPROVED UNDERGROUND STRUCTURES

SUPV. U/G STRUCTURES DATE COMMITTEE

NOTE: LOCATION OF UNDERGROUND STRUCTURES AS SHOWN ARE BASED ON THE BEST INFORMATION AVAILABLE. BUT NO GUARANTEE IS GIVEN THAT ALL EXISTING UTILITIES ARE SHOWN OR THAT THE GIVEN LOCATIONS ARE EXACT. CONFIRMATION OF EXISTENCE AND EXACT LOCATION OF ALL SERVICES MUST BE OBTAINED FROM THE INDIVIDUAL UTILITIES BEFORE PROCEEDING WITH CONSTRUCTION.

B.M. ELEV.	CITY OF WINNIPEG
01	ISSUED FOR TENDER 13.05.07
00	ISSUED FOR APPROVAL 13.05.06 BLM
NO.	REVISIONS DATE BY

TETRA TECH

DESIGNED BY GWC CHECKED BY KJM
DRAWN BY NL APPROVED BY GS

HOR. SCALE: 1 : 250
VERTICAL: 1 : 50

RELEASED FOR CONSTRUCTION
DATE 13.04.15



THE CITY OF WINNIPEG
WATER AND WASTE DEPARTMENT

2013 WATERMAIN RENEWALS - CONTRACT 8

KING STREET
HENRY AVENUE TO
HIGGINS AVENUE

CITY DRAWING NUMBER D-13225
SHEET 4 OF 10

CONSULTANT DRAWING NO. 1300120300-DWG-C0004

C0004

BID OPPORTUNITY No. 371-2013