

- CONSTRUCTION NOTES:**
1. WATERMAIN TO HAVE 2.5m COVER FROM CENTRELINE OF ROAD.
  2. ALL CURB REPLACEMENT TO MATCH EXISTING CURB.
  3. ALL EXISTING WATERMANS AT CONNECTION LOCATIONS ARE TO HAVE INVERTS VERIFIED PRIOR TO CONSTRUCTION.
  4. INSTALL ALL HYDRANTS WITH FLANGE ELEVATION FROM 50mm TO 150mm ABOVE FINISHED GRADE.
  5. SALVAGE ALL EXISTING HYDRANT ASSEMBLIES AND VALVES WHEN DIRECTED BY THE CONTRACT ADMINISTRATOR AND RETURN TO THE CITY YARD. ABANDON THE REMAINING VALVES (AND/OR VALVE BOXES) AND HYDRANT ASSEMBLIES.
  6. INSTALL WATERMAIN BY TRENCHLESS METHODS UNDER ALL PAVEMENTS, TREES, LIGHT STANDARDS, AND OTHER APPURTENANCES.
  7. LOCATION OF ALL SERVICES TO BE CONFIRMED IN FIELD.
  8. RENEW ALL LEAD WATER CONNECTIONS UP TO THE PROPERTY LINE WITH 19mm COPPER WATER CONNECTIONS UNLESS RENEWAL SIZE IS OTHERWISE NOTED.
  9. ALL VALVES SHALL TURN COUNTER CLOCKWISE TO CLOSE WITH RED OPERATING NUT.
  10. ALL BACKFILL UNDER AND WITHIN 1.0m OF PAVEMENT OR SIDEWALK SHALL BE CLASS 3.
  11. ALL BACKFILL UNDER BOULEVARD SHALL BE CLASS 5.
  12. ABANDON SERVICES NO LONGER IN USE WHERE DIRECTED BY CONTRACT ADMINISTRATOR.
  13. CONTRACTOR TO NOTIFY BUSINESSES AND RESIDENTS A MINIMUM OF 24 HOURS PRIOR TO ANY DISRUPTION TO WATER SERVICE.

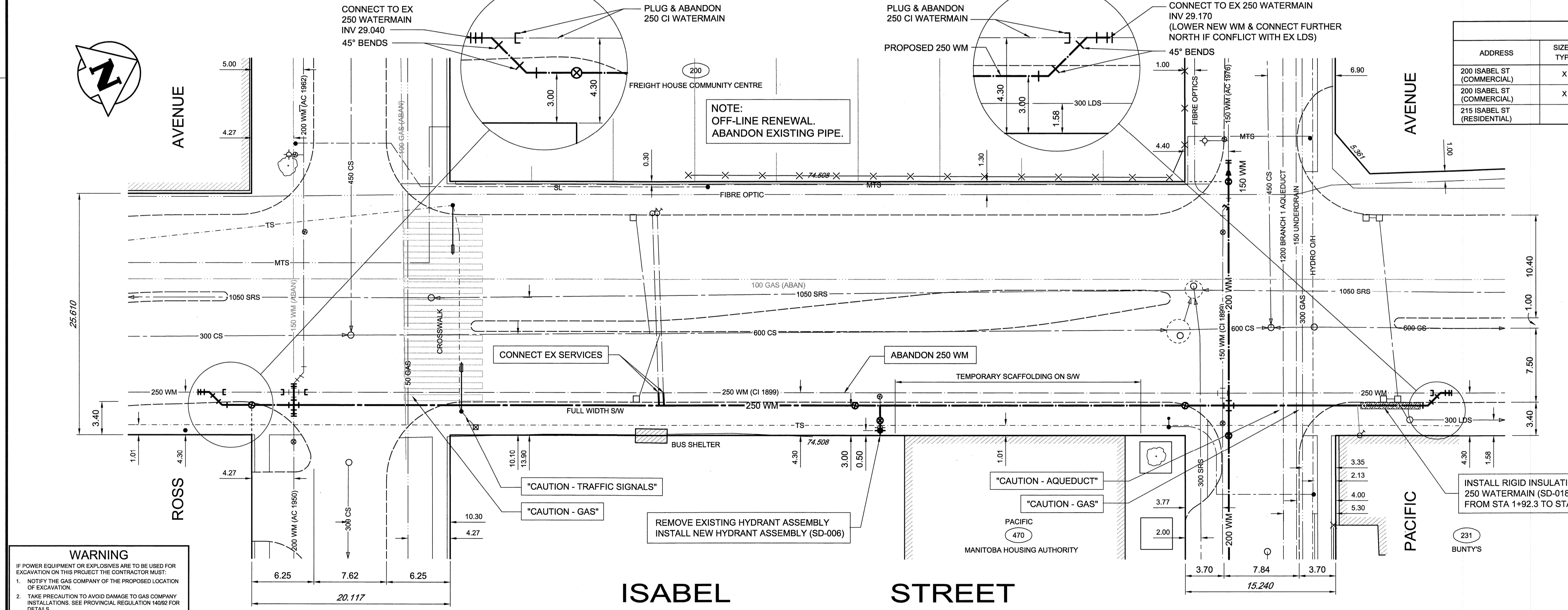
- GENERAL NOTES:**
1. STATION 1+00 = NORTH LIMIT OF ROSS AVENUE.
  2. CHAINAGE IS ALONG EAST LIMIT OF ISABEL STREET RIGHT-OF-WAY.

**WATER CONNECTION DATA**

ADDRESS	SIZE & TYPE	DISTANCE TO PL	STOP COCK LOCATION SHORT / LONG	CORPORATION COCK LOCATION	COMMENTS
200 ISABEL ST (COMMERCIAL)	X	0.0	7.2 WML DOOR #3 89.6 WML ISABEL	0.9 E OF S/C	SERVICE FROM ROSS AVE
200 ISABEL ST (COMMERCIAL)	X	3.2	3.1 NML OF SHED 21.6 NML ROSS	OPP S/C	
215 ISABEL ST (RESIDENTIAL)					SERVICED OF 470 PACIFIC AVE

**CAUTION: AQUEDUCT**  
DO NOT OPERATE HEAVY OR VIBRATORY EQUIPMENT OVER OR WITHIN 3.0m OF CENTRE LINE OF FEEDERMAIN.  
CONTACT THE WATER AND WASTE DEPARTMENT  
204 - 986-4289

A MINIMUM OF SEVEN DAYS PRIOR TO CROSSING OR WORKING ADJACENT TO AQUEDUCT TO ARRANGE FOR MEETING.  
EXPOSE AQUEDUCT BY HYDRO VACUUM OR OTHER SOFT DIG METHODS TO CONFIRM DEPTH AND ALIGNMENT OF PIPE.



**WARNING**

IF POWER EQUIPMENT OR EXPLOSIVES ARE TO BE USED FOR EXCAVATION ON THIS PROJECT THE CONTRACTOR MUST:

1. NOTIFY THE GAS COMPANY OF THE PROPOSED LOCATION OF EXCAVATION.
2. TAKE PRECAUTION TO AVOID DAMAGE TO GAS COMPANY INSTALLATIONS. SEE PROVINCIAL REGULATION 1409/2 FOR DETAILS.

EXISTING	LEGEND-PLAN	PROPOSED	EXISTING	LEGEND-PLAN	PROPOSED	EXISTING	LEGEND-PLAN	PROPOSED	EXISTING	LEGEND-PLAN	PROPOSED
150 WM	WATERMAIN	150 WM	BEND	ANCHOR	TREE	LOCATION APPROVED UNDERGROUND STRUCTURES	B.M. CITY OF WINNIPEG ELEV.	DESIGNED BY	GWC, SR	CHECKED BY	
400 FM	FEEDERMAIN	400 FM	TEE	LEGAL DIMENSION	SURVEY BAR	DATE	DATE	DRAWN BY	GMD	APPROVED BY	
300 LDS	LAND DRAINAGE SEWER	300 LDS	CURB STOP	TRAFFIC SIGNAL	GAS	NOTE:	LOCATION OF UNDERGROUND STRUCTURES AS SHOWN ARE BASED ON THE BEST INFORMATION AVAILABLE. BUT NO GUARANTEE IS GIVEN THAT ALL EXISTING UTILITIES ARE SHOWN OR THAT THE GIVEN LOCATIONS ARE EXACT. CONFIRMATION OF EXISTING AND EXACT LOCATION OF ALL SERVICES MUST BE OBTAINED FROM THE INDIVIDUAL UTILITIES BEFORE PROCEEDING WITH CONSTRUCTION.	HOR. SCALE:	1: 250	RELEASED FOR CONSTRUCTION	
250 WWS	WASTEWATER SEWER	250 WWS	PLUG	HYDRO	MTS			VERTICAL SCALE:	1: 50	DATE	13.04.15
300 CS	COMBINED SEWER	300 CS	MANHOLE	SIDEWALK	CURB						
200 FCM	FORCEMAIN	200 FCM	CATCHBASIN								
	JUNCTIONS		CURB INLET	ADDRESS	HYDRO POLE						
	HYDRANT		MANHOLE	HYDRO POLE	LIGHT STANDARD						
	VALVE		CATCHBASIN	HYDRO POLE							
	REDUCER		CURB INLET	HYDRO POLE							
			ADDRESS	HYDRO POLE							
			HYDRO POLE	HYDRO POLE							
			LIGHT STANDARD	HYDRO POLE							
				HYDRO POLE							

**LOCATION APPROVED UNDERGROUND STRUCTURES**

SUPV. / U/G STRUCTURES COMMITTEE DATE

NOTE: LOCATION OF UNDERGROUND STRUCTURES AS SHOWN ARE BASED ON THE BEST INFORMATION AVAILABLE. BUT NO GUARANTEE IS GIVEN THAT ALL EXISTING UTILITIES ARE SHOWN OR THAT THE GIVEN LOCATIONS ARE EXACT. CONFIRMATION OF EXISTING AND EXACT LOCATION OF ALL SERVICES MUST BE OBTAINED FROM THE INDIVIDUAL UTILITIES BEFORE PROCEEDING WITH CONSTRUCTION.

**TETRA TECH**

DESIGNED BY: GWC, SR  
CHECKED BY:  
DRAWN BY: GMD  
APPROVED BY:

HOR. SCALE: 1: 250  
VERTICAL SCALE: 1: 50  
DATE: 13.04.15

**PROVINCE OF MANITOBA REGISTERED PROFESSIONAL ENGINEER**

**McINTOSH**  
Member # 16932

CONSULTANT DRAWING NO. 1300120300-DWG-C0005

**THE CITY OF WINNIPEG WATER AND WASTE DEPARTMENT**

2013 WATERMAIN RENEWALS - CONTRACT 8

ISABEL STREET ROSS AVENUE TO PACIFIC AVENUE

CITY DRAWING NUMBER: D-13226  
SHEET: 5 OF 10  
C0005



BID OPPORTUNITY No. 371-2013