

CONSTRUCTION NOTES:

1. WATERMAIN TO HAVE 2.5m COVER FROM CENTRELINE OF ROAD.
2. ALL CURB REPLACEMENT TO MATCH EXISTING CURB.
3. ALL EXISTING WATERMANS AT CONNECTION LOCATIONS ARE TO HAVE INVERTS VERIFIED PRIOR TO CONSTRUCTION.
4. INSTALL ALL HYDRANTS WITH FLANGE ELEVATION FROM 50mm TO 150mm ABOVE FINISHED GRADE.
5. SALVAGE ALL EXISTING HYDRANT ASSEMBLIES AND VALVES WHEN DIRECTED BY THE CONTRACT ADMINISTRATOR AND RETURN TO THE CITY YARD. ABANDON THE REMAINING VALVES (AND/OR VALVE BOXES) AND HYDRANT ASSEMBLIES.
6. INSTALL WATERMAIN BY TRENCHLESS METHODS UNDER ALL PAVEMENTS, TREES, LIGHT STANDARDS, AND OTHER APPURTENANCES.
7. LOCATION OF ALL SERVICES TO BE CONFIRMED IN FIELD.
8. RENEW ALL LEAD WATER CONNECTIONS UP TO THE PROPERTY LINE WITH 19mm COPPER WATER CONNECTIONS UNLESS RENEWAL SIZE IS OTHERWISE NOTED.
9. ALL VALVES SHALL TURN COUNTER CLOCKWISE TO CLOSE WITH RED OPERATING NUT.
10. ALL BACKFILL UNDER AND WITHIN 1.0m OF PAVEMENT OR SIDEWALK SHALL BE CLASS 3.
11. ALL BACKFILL UNDER BOULEVARD SHALL BE CLASS 5.
12. ABANDON SERVICES NO LONGER IN USE WHERE DIRECTED BY CONTRACT ADMINISTRATOR.
13. CONTRACTOR TO NOTIFY BUSINESSES AND RESIDENTS A MINIMUM OF 24 HOURS PRIOR TO ANY DISRUPTION TO WATER SERVICE.

GENERAL NOTES:

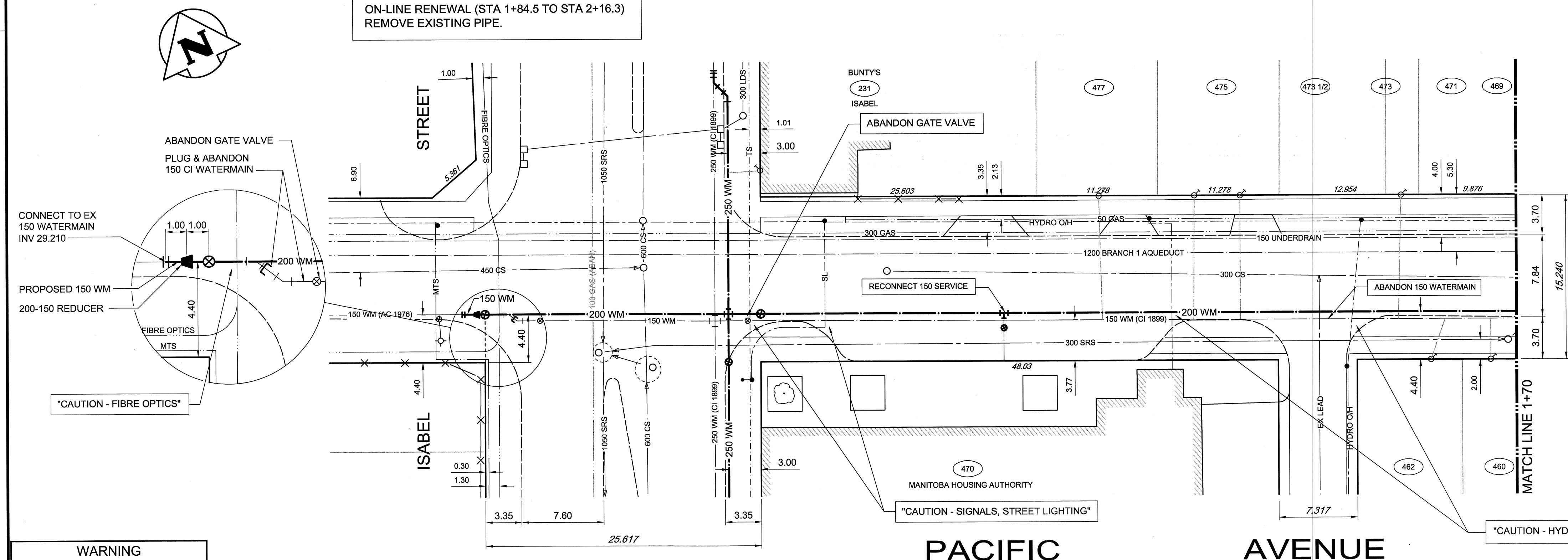
1. STATION 1+00 = EAST LIMIT OF ISABEL STREET.
2. CHAINAGE IS ALONG SOUTH LIMIT OF PACIFIC AVENUE RIGHT-OF-WAY.

NOTE:
OFF-LINE RENEWAL (STA 0+72.4 TO STA 1+84.5).
ABANDON EXISTING PIPE.
ON-LINE RENEWAL (STA 1+84.5 TO STA 2+16.3)
REMOVE EXISTING PIPE.

WATER CONNECTION DATA					
ADDRESS	SIZE & TYPE	DISTANCE TO PL	STOP COCK LOCATION		COMMENTS
			SHORT / LONG	CORPORATION COCK LOCATION	
477 PACIFIC AVE (RESIDENTIAL)	19 COPPER	0.45	0.76 WEL BLDG 31.4 EEL ISABEL	0.3 E OF S/C	
475 PACIFIC AVE (RESIDENTIAL)	19 COPPER	-	2.1 EWL BLDG	0.8 E OF S/C	
473 PACIFIC AVE (RESIDENTIAL)	19 COPPER	0.3	2.4 WEL PORCH 471 59.4 EEL ISABEL	0.3 W OF S/C	DOUBLED WITH 469/471
471 PACIFIC AVE (RESIDENTIAL)	19 COPPER	-	2.4 WEL PORCH 471 59.4 EEL ISABEL	0.3 W OF S/C	DOUBLED WITH 471/473
470 PACIFIC AVE (RESIDENTIAL)	19 COPPER	-	X	-	
469 PACIFIC AVE (RESIDENTIAL)	19 COPPER	-	2.4 WEL PORCH 471 59.4 EEL ISABEL	0.3 W OF S/C	DOUBLED WITH 471/473
462 PACIFIC AVE (RESIDENTIAL)	19 COPPER	0.0	3.7 EWL BLDG	1.1 E OF S/C	
460 PACIFIC AVE (RESIDENTIAL)	19 COPPER	0.0	14.9 W 1ST HYD E OF ISABEL	OPP S/C	

CAUTION: AQUEDUCT
DO NOT OPERATE HEAVY OR VIBRATORY EQUIPMENT OVER OR WITHIN 3.0m OF CENTRE LINE OF FEEDERMAIN.
CONTACT THE WATER AND WASTE DEPARTMENT 204-986-4289

A MINIMUM OF SEVEN DAYS PRIOR TO CROSSING OR WORKING ADJACENT TO AQUEDUCT TO ARRANGE FOR MEETING.
EXPOSE AQUEDUCT BY HYDRO VACUUM OR OTHER SOFT DIG METHODS TO CONFIRM DEPTH AND ALIGNMENT OF PIPE.



WARNING
IF POWER EQUIPMENT OR EXPLOSIVES ARE TO BE USED FOR EXCAVATION ON THIS PROJECT THE CONTRACTOR MUST:
1. NOTIFY THE GAS COMPANY OF THE PROPOSED LOCATION OF EXCAVATION.
2. TAKE PRECAUTION TO AVOID DAMAGE TO GAS COMPANY INSTALLATIONS. SEE PROVINCIAL REGULATION 140R2 FOR DETAILS.

EXISTING	LEGEND-PLAN	PROPOSED	EXISTING	LEGEND-PLAN	PROPOSED	EXISTING	LEGEND-PLAN	PROPOSED
150 WM	WATERMAIN	150 WM	BEND	BEND	ANCHOR TREE	LOCATION APPROVED UNDERGROUND STRUCTURES	B.M. ELEV.	
400 FM	FEEDERMAIN	400 FM	TEE	TEE	LEGAL DIMENSION	SUPV. U/G STRUCTURES COMMITTEE	DATE	
300 LDS	LAND DRAINAGE SEWER	300 LDS	CURB STOP	CURB STOP	SURVEY BAR	NOTE: LOCATION OF UNDERGROUND STRUCTURES AS SHOWN ARE BASED ON THE BEST INFORMATION AVAILABLE. BUT NO GUARANTEE IS GIVEN THAT ALL EXISTING UTILITIES ARE SHOWN OR THAT THE GIVEN LOCATIONS ARE EXACT. CONFIRMATION OF EXISTENCE AND EXACT LOCATION OF ALL SERVICES MUST BE OBTAINED FROM THE INDIVIDUAL UTILITIES BEFORE PROCEEDING WITH CONSTRUCTION.		
250 WWS	WASTEWATER SEWER	250 WWS	PLUG	PLUG	TRAFFIC SIGNAL			
300 CS	COMBINED SEWER	300 CS	MANHOLE	MANHOLE	GAS			
200 FCM	FORCEMAIN	200 FCM	CATCHBASIN	CATCHBASIN	HYDRO			
	JUNCTIONS		CURB INLET	CURB INLET	MTS			
	HYDRANT		ADDRESS	ADDRESS	SIDEWALK			
	VALVE		HYDRO POLE	HYDRO POLE	CURB			
	REDUCER		LIGHT STANDARD	LIGHT STANDARD				

NO.	REVISIONS	DATE	BY
01	ISSUED FOR TENDER	13.05.07	
01	ISSUED FOR APPROVAL	13.05.06	BLM

TETRA TECH

DESIGNED BY: GWC, SR
CHECKED BY:
DRAWN BY: GMD
APPROVED BY:
HOR. SCALE: 1 : 250
VERTICAL: 1 : 50
RELEASED FOR CONSTRUCTION
DATE: 13.04.15



THE CITY OF WINNIPEG
WATER AND WASTE DEPARTMENT

2013 WATERMAIN RENEWALS - CONTRACT 8

PACIFIC AVENUE
ISABEL STREET TO
70m EAST OF ISABEL STREET

CITY DRAWING NUMBER: D-13227
SHEET 6 OF 10
C0006

CONSULTANT DRAWING NO. 1300120300-DWG-C0006

APEGM
Certificate of Authorization
TETRA TECH WEI Inc.
No. 5313 Date: April 30, 2014

BID OPPORTUNITY No. 371-2013