

- CONSTRUCTION NOTES:**
1. WATERMAIN TO HAVE 2.5m COVER FROM CENTRELINE OF ROAD.
 2. ALL CURB REPLACEMENT TO MATCH EXISTING CURB.
 3. ALL EXISTING WATERMANS AT CONNECTION LOCATIONS ARE TO HAVE INVERTS VERIFIED PRIOR TO CONSTRUCTION.
 4. INSTALL ALL HYDRANTS WITH FLANGE ELEVATION FROM 50mm TO 150mm ABOVE FINISHED GRADE.
 5. SALVAGE ALL EXISTING HYDRANT ASSEMBLIES AND VALVES WHEN DIRECTED BY THE CONTRACT ADMINISTRATOR AND RETURN TO THE CITY YARD. ABANDON THE REMAINING VALVES (AND/OR VALVE BOXES) AND HYDRANT ASSEMBLIES.
 6. INSTALL WATERMAIN BY TRENCHLESS METHODS UNDER ALL PAVEMENTS, TREES, LIGHT STANDARDS, AND OTHER APPURTENANCES.
 7. LOCATION OF ALL SERVICES TO BE CONFIRMED IN FIELD.
 8. RENEW ALL LEAD WATER CONNECTIONS UP TO THE PROPERTY LINE WITH 19mm COPPER WATER CONNECTIONS UNLESS RENEWAL SIZE IS OTHERWISE NOTED.
 9. ALL VALVES SHALL TURN COUNTER CLOCKWISE TO CLOSE WITH RED OPERATING NUT.
 10. ALL BACKFILL UNDER AND WITHIN 1.0m OF PAVEMENT OR SIDEWALK SHALL BE CLASS 3.
 11. ALL BACKFILL UNDER BOULEVARD SHALL BE CLASS 5.
 12. ABANDON SERVICES NO LONGER IN USE WHERE DIRECTED BY CONTRACT ADMINISTRATOR.
 13. CONTRACTOR TO NOTIFY BUSINESSES AND RESIDENTS A MINIMUM OF 24 HOURS PRIOR TO ANY DISRUPTION TO WATER SERVICE.

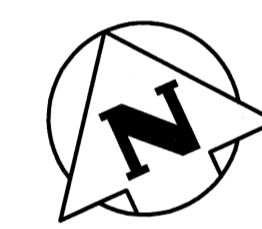
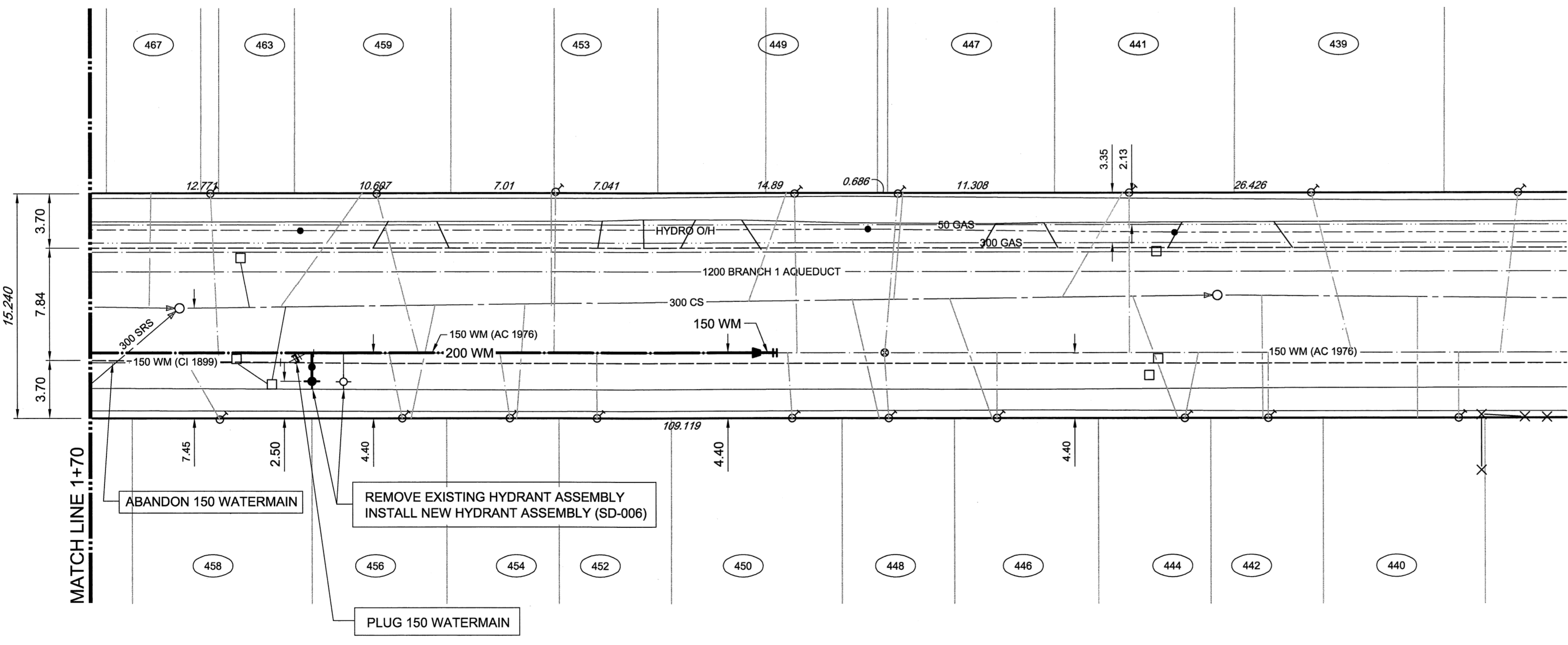
- GENERAL NOTES:**
1. STATION 1+00 = EAST LIMIT OF ISABEL STREET.
 2. CHAINAGE IS ALONG SOUTH LIMIT OF PACIFIC AVENUE RIGHT-OF-WAY.

NOTE:
OFF-LINE RENEWAL (STA 0+72.4 TO STA 1+84.5).
ABANDON EXISTING PIPE.
ON-LINE RENEWAL (STA 1+84.5 TO STA 2+16.3)
REMOVE EXISTING PIPE.

WATER CONNECTION DATA						
ADDRESS	SIZE & TYPE	DISTANCE TO PL	STOP COCK LOCATION		CORPORATION COCK LOCATION	COMMENTS
			SHORT / LONG			
467 PACIFIC AVE (RESIDENTIAL)	19 COPPER	0.37	0.7 WWL OF 463	70.0 EEL ISABEL	0.6 E OF S/C	DBL WITH 463
463 PACIFIC AVE (RESIDENTIAL)	19 COPPER	0.37	0.7 WWL OF 463	70.0 EEL ISABEL	0.6 E OF S/C	DBL WITH 467
459 PACIFIC AVE (RESIDENTIAL)	19 COPPER	0.0	1.4 EWL BLDG	89.3 EEL ISABEL	3.2 E S/C	-
458 PACIFIC AVE (RESIDENTIAL)	19 COPPER	-	4.8 EWL BLDG	5.9 EW PL	2.5 W S/C	-
456 PACIFIC AVE (RESIDENTIAL)	19 COPPER	0.15	3.2 WEL BLDG	3.7 E 1ST HYD E OF ISABEL	0.6 W OF S/C	-
454 PACIFIC AVE (RESIDENTIAL)	19 COPPER	0.0	1.8 EWL BLDG	11.3 E 1ST HYD E OF ISABEL	0.45 W OF S/C	-
453 PACIFIC AVE (RESIDENTIAL)	19 COPPER	-	2.7 WEL BLDG	25.6 E OF MH AT 458 PACIFIC	OPP S/C	-
452 PACIFIC AVE (RESIDENTIAL)	19 COPPER	0.3	2.4 WEL BLDG	17.1 E 1ST HYD E OF ISABEL	OPP S/C	-
450 PACIFIC AVE (RESIDENTIAL)	19 COPPER	0.0	4.0 EWL BLDG	31.4 E 1ST HYD E OF ISABEL	0.3 W OF S/C	-
449 PACIFIC AVE (RESIDENTIAL)	19 COPPER	0.3	1.8 WEL BLDG	117.7 EEL ISABEL	0.15 E OF S/C	-
448 PACIFIC AVE (RESIDENTIAL)	19 COPPER	0.0	1.2 EWL BLDG	37.5 E 1ST HYD E OF ISABEL	0.3 W OF S/C	-
447 PACIFIC AVE (RESIDENTIAL)	19 COPPER	0.3	2.8 EWL BLDG	124.7 EEL ISABEL	0.9 W OF S/C	-

CAUTION: AQUEDUCT
DO NOT OPERATE HEAVY OR VIBRATORY EQUIPMENT OVER OR WITHIN 3.0m OF CENTRE LINE OF FEEDERMAIN.
CONTACT THE WATER AND WASTE DEPARTMENT
204 - 996-4289

A MINIMUM OF SEVEN DAYS PRIOR TO CROSSING OR WORKING ADJACENT TO AQUEDUCT TO ARRANGE FOR MEETING.
EXPOSE AQUEDUCT BY HYDRO VACUUM OR OTHER SOFT DIG METHODS TO CONFIRM DEPTH AND ALIGNMENT OF PIPE.



WARNING
IF POWER EQUIPMENT OR EXPLOSIVES ARE TO BE USED FOR EXCAVATION ON THIS PROJECT THE CONTRACTOR MUST:
1. NOTIFY THE GAS COMPANY OF THE PROPOSED LOCATION OF EXCAVATION.
2. TAKE PRECAUTION TO AVOID DAMAGE TO GAS COMPANY INSTALLATIONS. SEE PROVINCIAL REGULATION 14092 FOR DETAILS.

PACIFIC AVENUE

EXISTING	LEGEND-PLAN	PROPOSED	EXISTING	LEGEND-PLAN	PROPOSED	EXISTING	LEGEND-PLAN	PROPOSED
150 WM	WATERMAIN	150 WM	BEND	ANCHOR				
400 FM	FEEDERMAIN	400 FM	TEE	TREE				
300 LDS	LAND DRAINAGE SEWER	300 LDS	CURB STOP	LEGAL DIMENSION				
250 WWS	WASTEWATER SEWER	250 WWS	PLUG	SURVEY BAR				
300 CS	COMBINED SEWER	300 CS	MANHOLE	TRAFFIC SIGNAL				
200 FCM	FORCEMAIN	200 FCM	CATCHBASIN	GAS				
	JUNCTIONS		CURB INLET	HYDRO				
	HYDRANT		ADDRESS	MTS				
	VALVE		HYDRO POLE	SIDEWALK				
	REDUCER		LIGHT STANDARD	CURB				

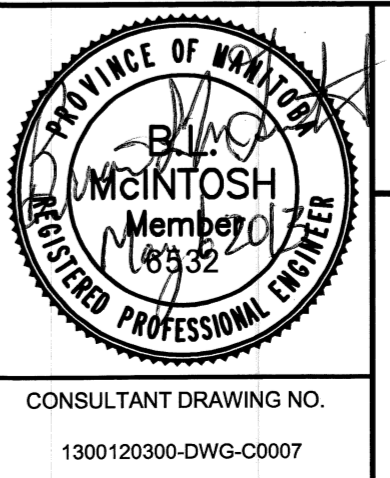
LOCATION APPROVED UNDERGROUND STRUCTURES
SUPV. U/G STRUCTURES COMMITTEE DATE
NOTE: LOCATION OF UNDERGROUND STRUCTURES AS SHOWN ARE BASED ON THE BEST INFORMATION AVAILABLE. BUT NO GUARANTEE IS GIVEN THAT ALL EXISTING UTILITIES ARE SHOWN OR THAT THE GIVEN LOCATIONS ARE EXACT. CONFIRMATION OF EXISTENCE AND EXACT LOCATION OF ALL SERVICES MUST BE OBTAINED FROM THE INDIVIDUAL UTILITIES BEFORE PROCEEDING WITH CONSTRUCTION.

NO.	REVISIONS	DATE	BY
01	ISSUED FOR TENDER	13.05.07	
00	ISSUED FOR APPROVAL	13.05.06	BLM

TETRA TECH

DESIGNED BY: GWC, SR
DRAWN BY: GMD
HOR. SCALE: 1 : 250
VERTICAL: 1 : 50

CHECKED BY:
APPROVED BY:
RELEASED FOR CONSTRUCTION

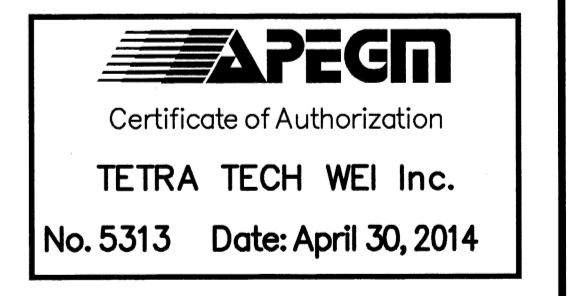


THE CITY OF WINNIPEG
WATER AND WASTE DEPARTMENT

2013 WATERMAIN RENEWALS - CONTRACT 8

PACIFIC AVENUE
70m EAST OF ISABEL STREET TO
116m EAST OF ISABEL STREET

CITY DRAWING NUMBER: D-13228
SHEET 7 OF 10
CONSULTANT DRAWING NO. C0007



BID OPPORTUNITY No. 371-2013