

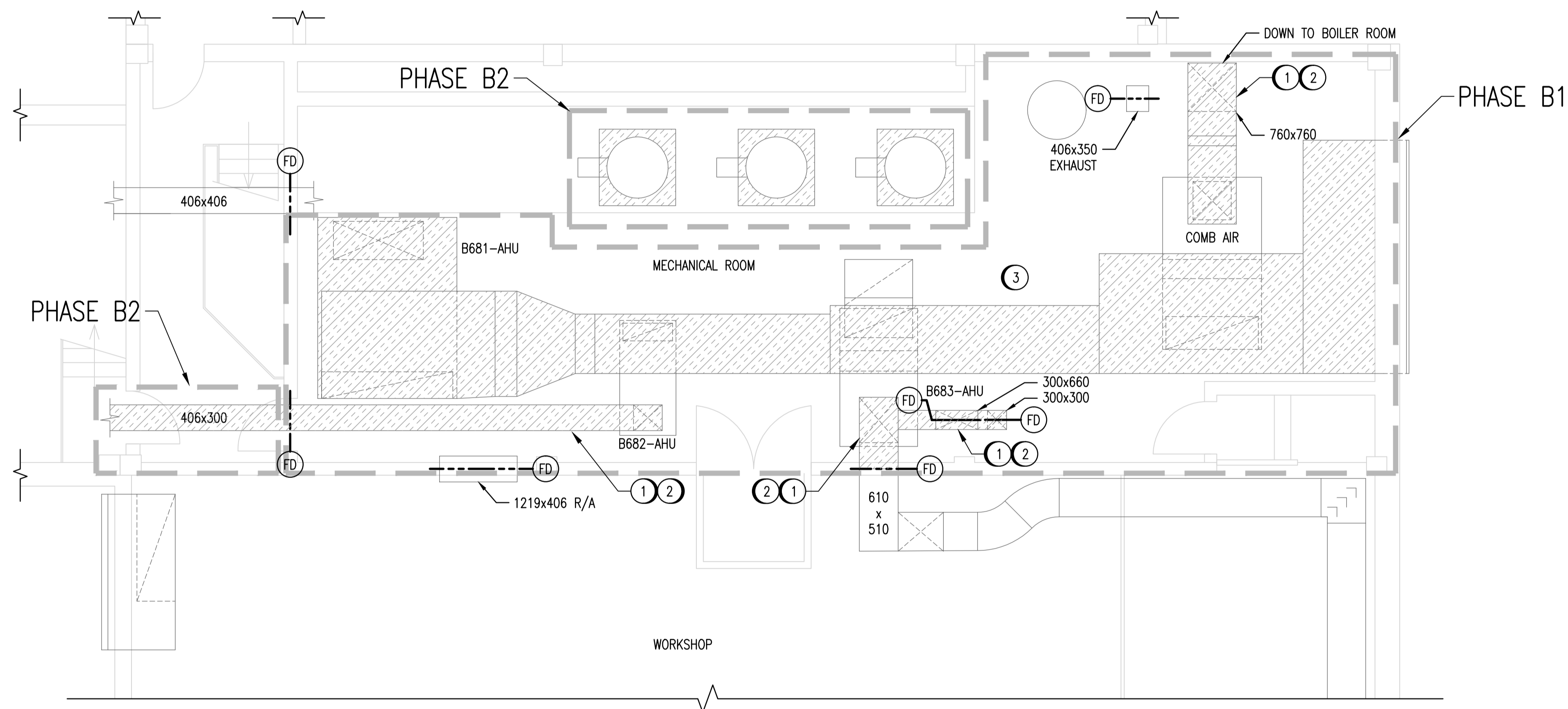
KEYPLAN

NOTES:

- ① DETACH AND TEMPORARILY SUPPORT WIRING, CONDUIT, PIPING, TUBING, ETC. ATTACHED TO DUCTWORK TO ALLOW THE REQUIRED INSULATION REMOVAL. MAINTAIN ALL CONNECTIONS TO ASSOCIATED EQUIPMENT. REINSTALLATION TO BE PERFORMED BY OTHERS.
- ② CONFIRMED AND SUSPECTED ASBESTOS CONTAINING MATERIALS ON DUCTWORK INSULATION ARE TO BE REMOVED. REFER TO ASBESTOS ABATEMENT SPECIFICATIONS FOR ABATEMENT PROCEDURES.
- ③ CONFIRMED AND SUSPECTED ASBESTOS CONTAINING MATERIALS ON HWS AND HWR PIPE FITTINGS ARE TO BE REMOVED. REFER TO THE ASBESTOS ABATEMENT SPECIFICATIONS FOR ABATEMENT PROCEDURES. APPROX. 32 FITTINGS EXIST. CONTRACTOR TO CONFIRM EXACT NUMBER ON SITE.

LEGEND

- DUCTWORK WHERE ASBESTOS CONTAINING MATERIALS ARE SUSPECT ON INSULATION
- ENCLOSURE AREA EXTENTS FOR EACH SPECIFIC WORK PHASE IDENTIFIED IN THE ASBESTOS ABATEMENT WORK PLAN



NO.	REVISIONS	DATE	DESIGN	CHECK
00	ISSUED FOR TENDER, BID OPP. 40-2013	2013/01/28	TRS	SSN

<b>SNC-LAVALIN</b>		SNC-LAVALIN INC. 148 Nature Park Way Winnipeg, MB, Canada R3P 0X7 204-796-8080	
DESIGNED BY: T. SCHICK	CHECKED BY: S. NORSWORTHY	APPROVED BY: C. REIMER	RELEASED FOR CONSTRUCTION BY: NEIL HARRINGTON DATE: 2013/01/24
DRAWN BY: C. COOPER		DATE: 2013/01/14	
SCALE: 1 : 50		CONSULTANT NO.: 112577-0116-450D-1002	

ENGINEER'S SEAL  
 ORIGINAL DRAWING  
 SEALED BY:  
 S. S. NORSWORTHY  
 SNC-LAVALIN  
 MEMBER #20725  
 2013/01/29  
 REV. 00

**THE CITY OF WINNIPEG**  
 WATER AND WASTE DEPARTMENT

SOUTH END WATER POLLUTION CONTROL CENTRE  
 ASBESTOS ABATEMENT  
 PLAN VIEW  
 SERVICE BUILDING MECHANICAL ROOMS

CITY DRAWING NUMBER	SHEET	REV.	SIZE
1-0102B-M0005	001	00	A1