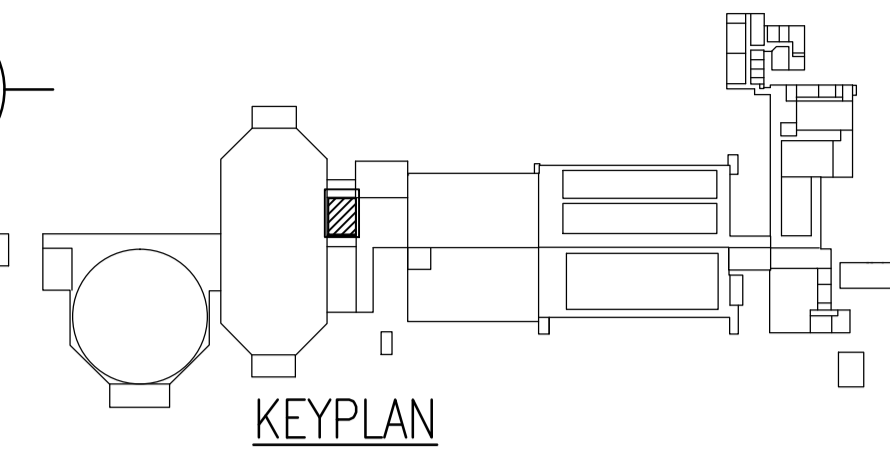
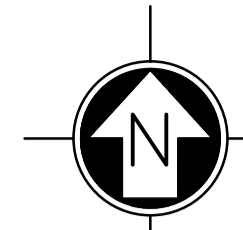


SECONDARY CLARIFIER VENTILATION ROOM AT ELEV 237.59
SCALE: 1 : 50

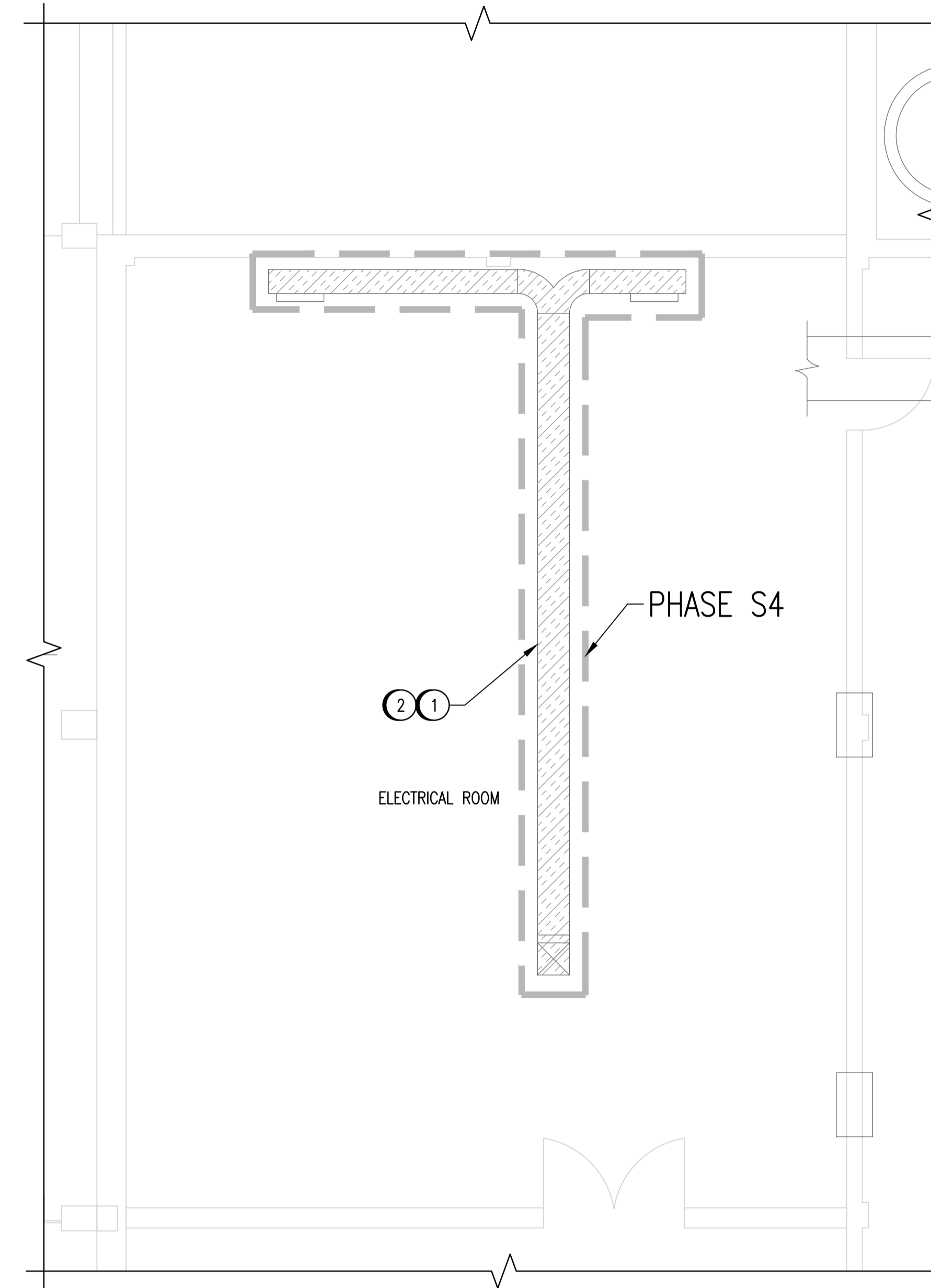


NOTES:

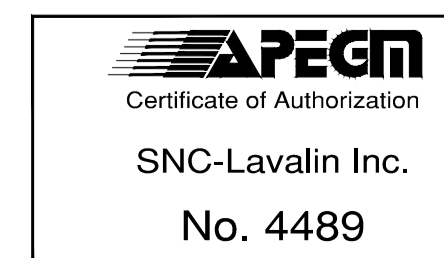
- ① DETACH AND TEMPORARILY SUPPORT WIRING, CONDUIT, PIPING, TUBING, ETC. ATTACHED TO DUCTWORK TO ALLOW THE REQUIRED INSULATION REMOVAL. MAINTAIN ALL CONNECTIONS TO ASSOCIATED EQUIPMENT. REINSTALLATION TO BE PERFORMED BY OTHERS.
- ② CONFIRMED AND SUSPECTED ASBESTOS CONTAINING MATERIALS ON DUCTWORK INSULATION ARE TO BE REMOVED. REFER TO ASBESTOS ABATEMENT SPECIFICATIONS FOR ABATEMENT PROCEDURES.

LEGEND

- DUCTWORK WHERE ASBESTOS CONTAINING MATERIALS ARE SUSPECT ON INSULATION
- ENCLOSURE AREA EXTENTS FOR EACH SPECIFIC WORK PHASE IDENTIFIED IN THE ASBESTOS ABATEMENT WORK PLAN



SECONDARY CLARIFIER ELECTRICAL ROOM AT ELEV 233.48
SCALE: 1 : 50



NO.	REVISIONS	DATE	DESIGN	CHECK
00	ISSUED FOR TENDER, BID OPP. 40-2013	2013/01/28	TRS	SSN

		SNC-LAVALIN INC. 148 Nature Park Way Winnipeg, MB, Canada R3P 0X7 204-786-8080	
DESIGNED BY:	T. SCHICK	CHECKED BY:	S. NORSWORTHY
DRAWN BY:	C. COOPER	APPROVED BY:	C. REIMER
SCALE:	1 : 50	RELEASED FOR CONSTRUCTION BY:	NEIL HARRINGTON
DATE:	2013/01/14	DATE:	2013/01/24
CONSULTANT NO.:		112577-0116-45DD-1005	

ENGINEER'S SEAL
ORIGINAL DRAWING
SEALED BY:
S. S. NORSWORTHY
SNC-LAVALIN
MEMBER #20725
2013/01/29
REV. 00

THE CITY OF WINNIPEG
 WATER AND WASTE DEPARTMENT
 SOUTH END WATER POLLUTION CONTROL CENTRE
 ASBESTOS ABATEMENT
 PLAN VIEW
 VENTILATION & ELECTRICAL ROOMS
 CITY DRAWING NUMBER: 1-0102S-M0002
 SHEET: 001
 REV.: 00
 SIZE: A1