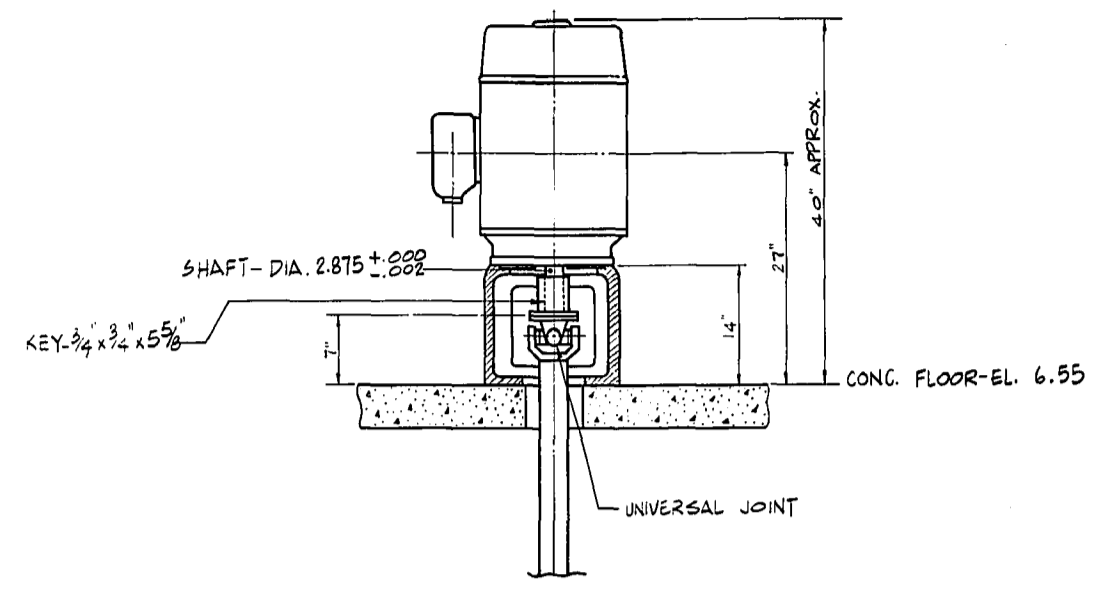


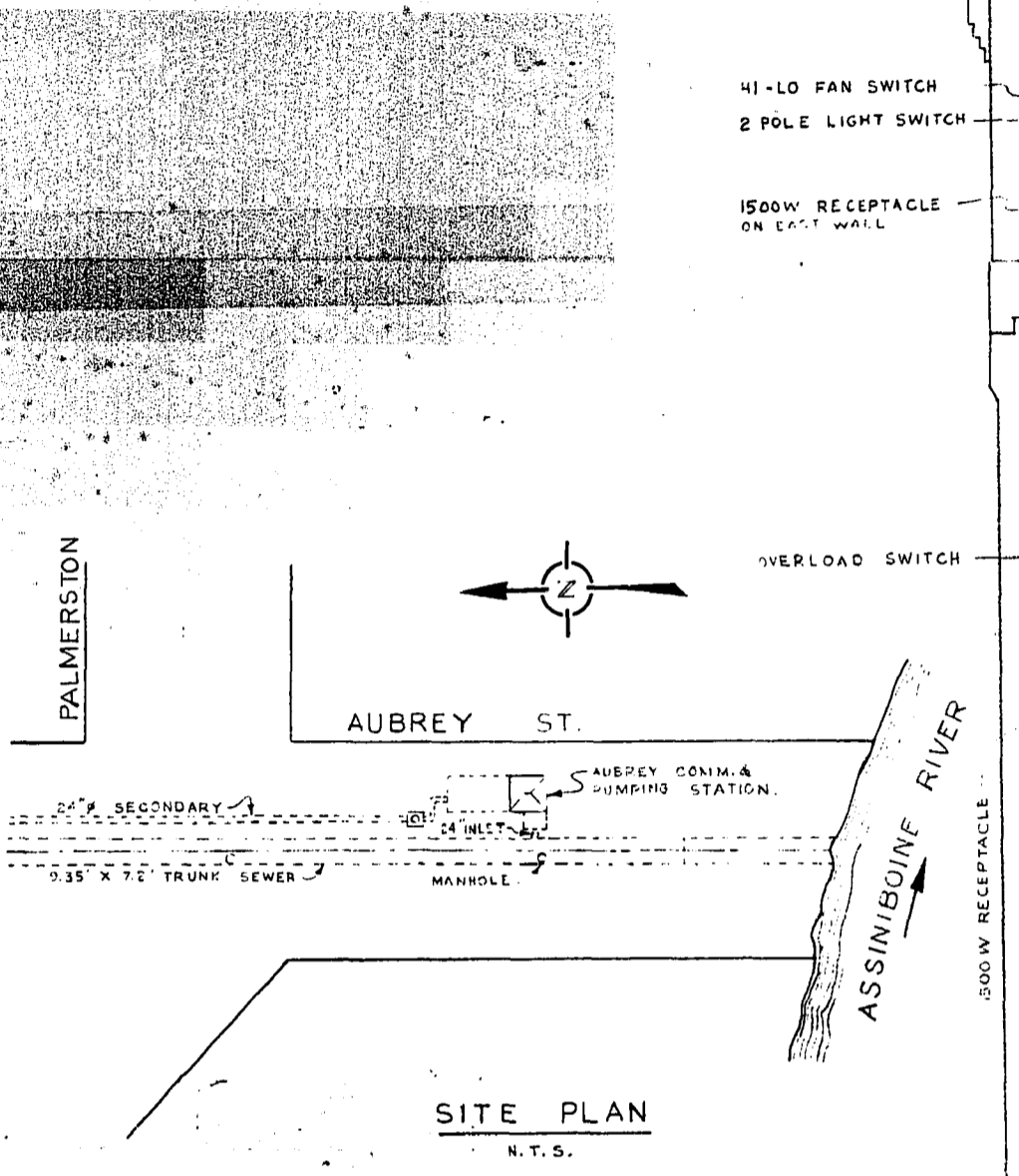
498B

file # 10106

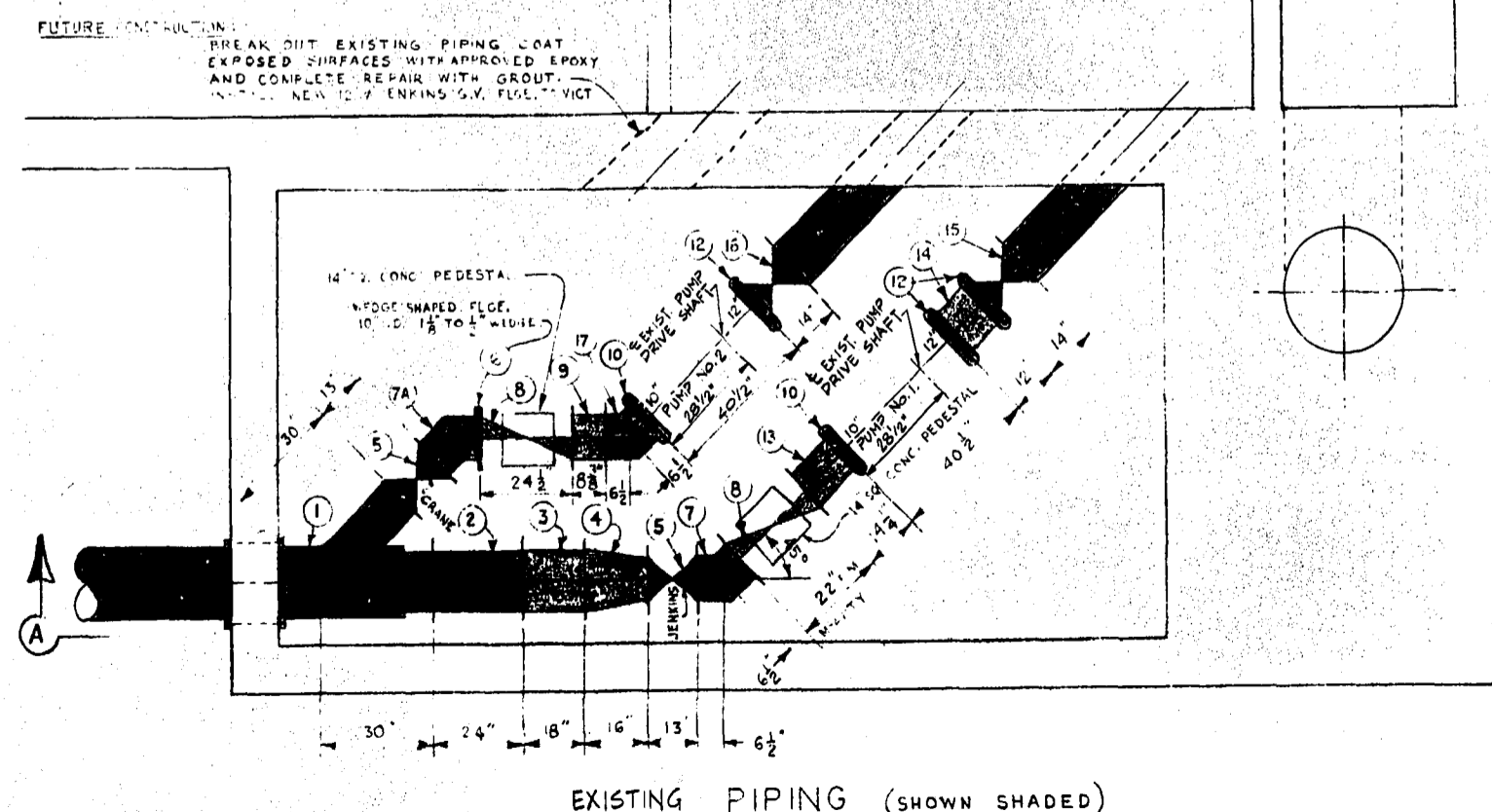
REF. or DRAWING No. DETAILS



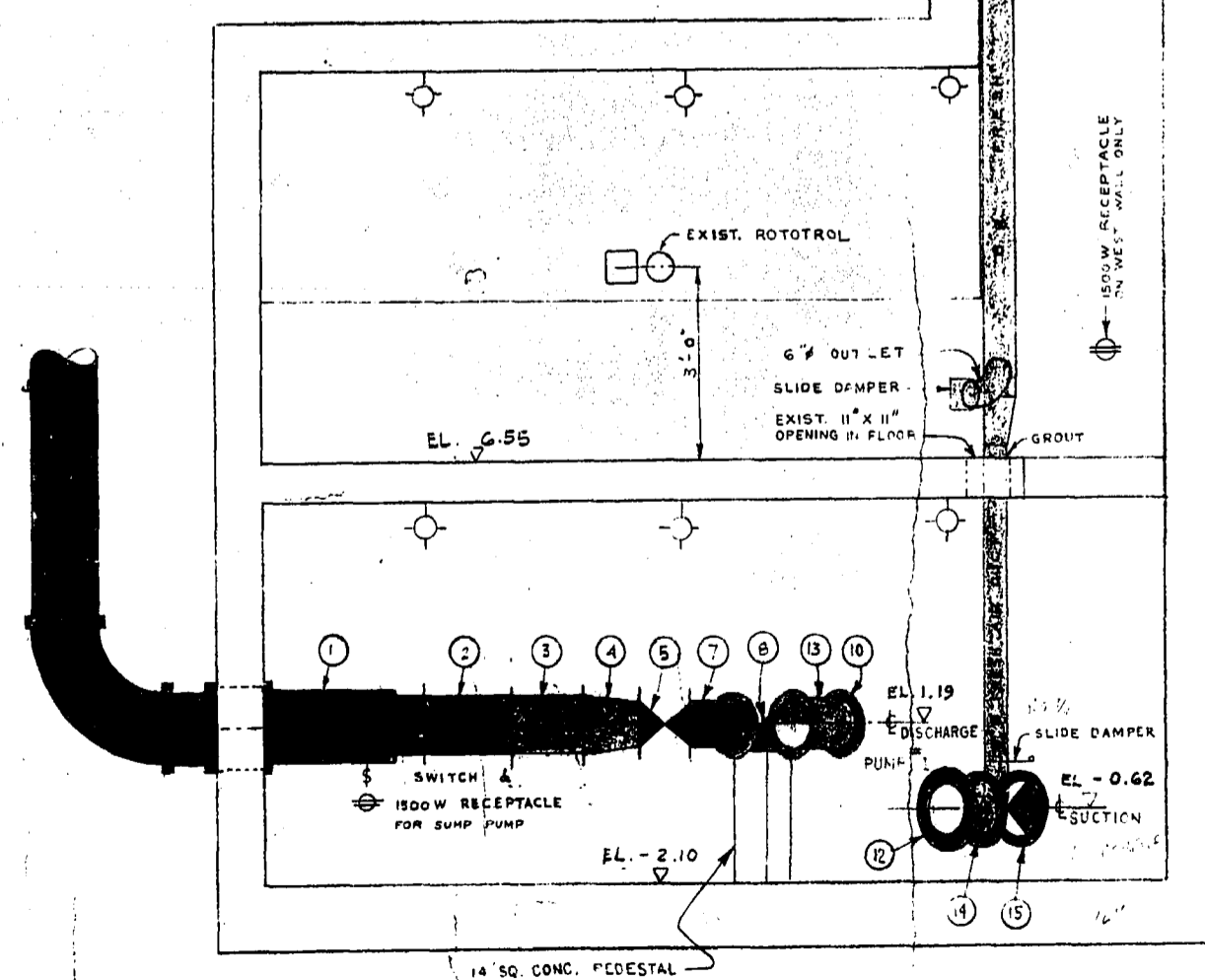
BROOK ELECTRIC MOTOR
 FRAME 404 TC, 60 HP, 3 PHASE
 60 HERTZ, 550 VOLT, 1200 RPM



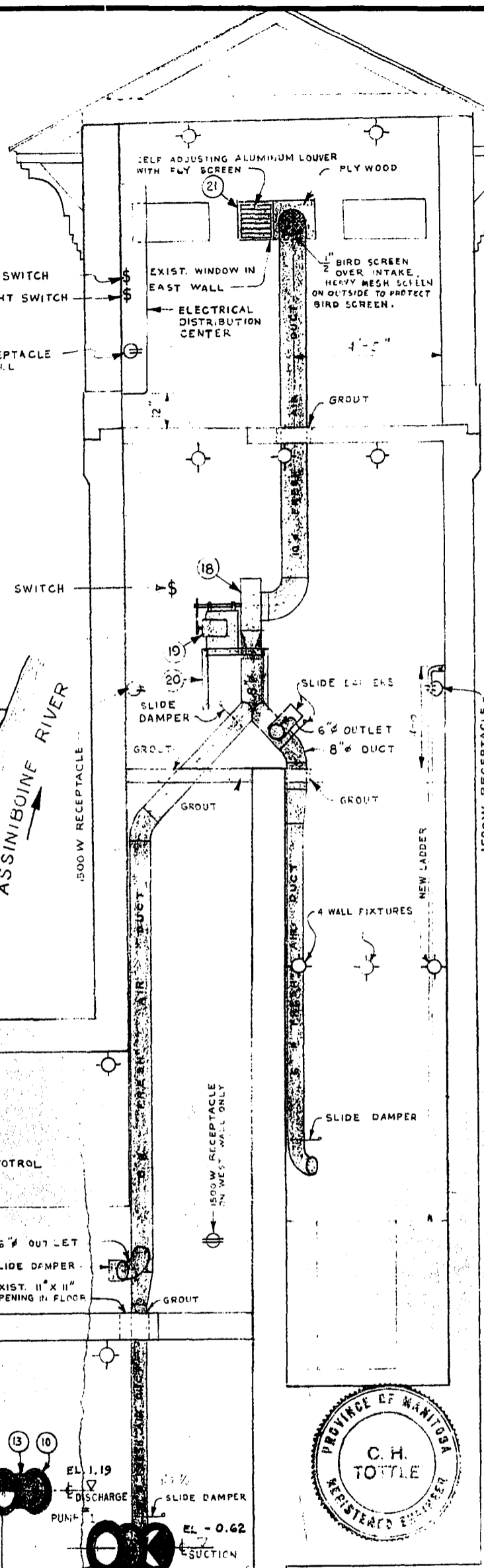
SITE PLAN
N.T.S.



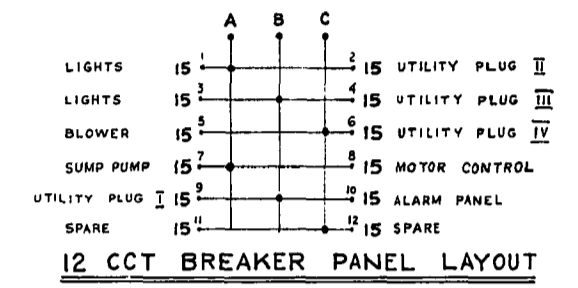
EXISTING PIPING (SHOWN SHADED)



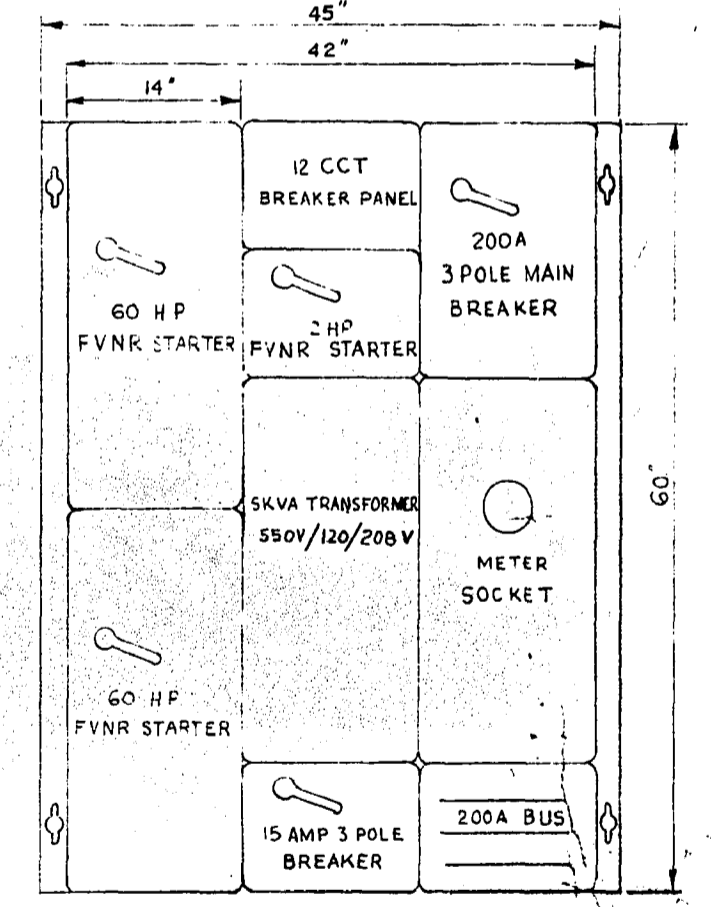
SEC. "A-A"



MATERIAL LIST						
NO.	QTY	SIZE	DESCRIPTION	END	LENGTH	REMARKS
1	1	16x14x10	C.I. TEE	FLGE.-FLGE		EXISTING
2	1	14"	C.I. FILLER	" "	24"	"
3	1	14"	C.I. "	" "	18"	"
4	1	14x10	C.I. REDUCER	" "	16"	"
5	2	10"	C.I. GATE VALVES	" "	13"	EXISTING
6	1	10"	C.I. FILLER WEDGE SHAPED	FLANGE	10"	WEDGE EXIST.
7	1	10"	C.I. ELBOWS	FLGE.-FLGE	8"	EXIST
8	2	10"	C.I. CHECK VALVES	" "	24"	"
9	1	10"	C.I. FILLER	" "	8 3/8"	"
10	2	10"	C.I. VICTAULIC COUPLINGS	" "		EXIST
11	3	12"	VICTAULIC COUPLINGS	" "		EXIST
12	1	10"	C.I. FILLER	FLGE.-VICT	14"	"
13	1	12"	C.I. "	VICT.-VICT	12"	"
14	1	12"	C.I. GATE VALVE	JENKINS	14"	EXIST. W/ CRANK
15	1	12"	C.I. "	"	14"	"
16	1	10"	C.I. ELBOW	FLGE.-VICT.	8"	"
17	1	10"	C.I. ELBOW	"	8"	"
18	1	10"	INLET FAN	"	"	"
19	1	1/2-1/2 HP	MOTOR	"	"	DUAL SPEED WALL MOUNTED
20	1	2x2x1/2	SUPPORT	"	"	"
21	1	TO SUIT	CARNES ALUM LOUVER MODEL L-36	"	"	"
22	1	10"	C.I. ELBOW	FLGE.-FLGE	32 3/4"	SPECIAL CASTING



- LIST OF FIXTURES**
- PUMP FLOOR - 4 CEILING FIXTURES; SUMP PUMP 1/2 HP 120 V. SUBM. OVERLOAD DISCONNECT PLUS PLUG
 - PUMP MOTOR FLOOR - 2 CEILING FIXTURES; UTILITY PLUG I
 - COMM MOTOR FLOOR - 2 CEILING FIXTURES; UTILITY PLUGS II III BLOWER (OVERLOAD DISCONNECT)
 - VALVE CHAMBER - 1 WALL FIXTURE
 - COMM CHAMBER - 4 WALL FIXTURES
 - TOP FLOOR - 2 CEILING FIXTURES; UTILITY PLUG IV; 2 POLE LIGHTING SWITCH (2 SPEED SELECTROL SWITCH FOR BLOWER)



ELECTRICAL DISTRIBUTION CENTER (KLOCKNER MOELLER)
 LOCATED ON NORTH WALL OF SUPERSTRUCTURE

FOR INFORMATION ONLY

THE METROPOLITAN CORPORATION OF GREATER WINNIPEG
WATERWORKS & WASTE DISPOSAL DIVISION
 PENMAN - DIRECTOR

SEWERAGE DISPOSAL DEPT. DES. *Atwell* CHK'D *HB* ORN. *HB* DATE 27 NOV 70
ALTERATIONS TO AUBREY ST. COMM. & PUMPING STATION
 ENG. DES. *[Signature]* ENG. OPS. *[Signature]* APPROVED *[Signature]*
 DRAWING NO. **498B**

MICROFILMED 1972