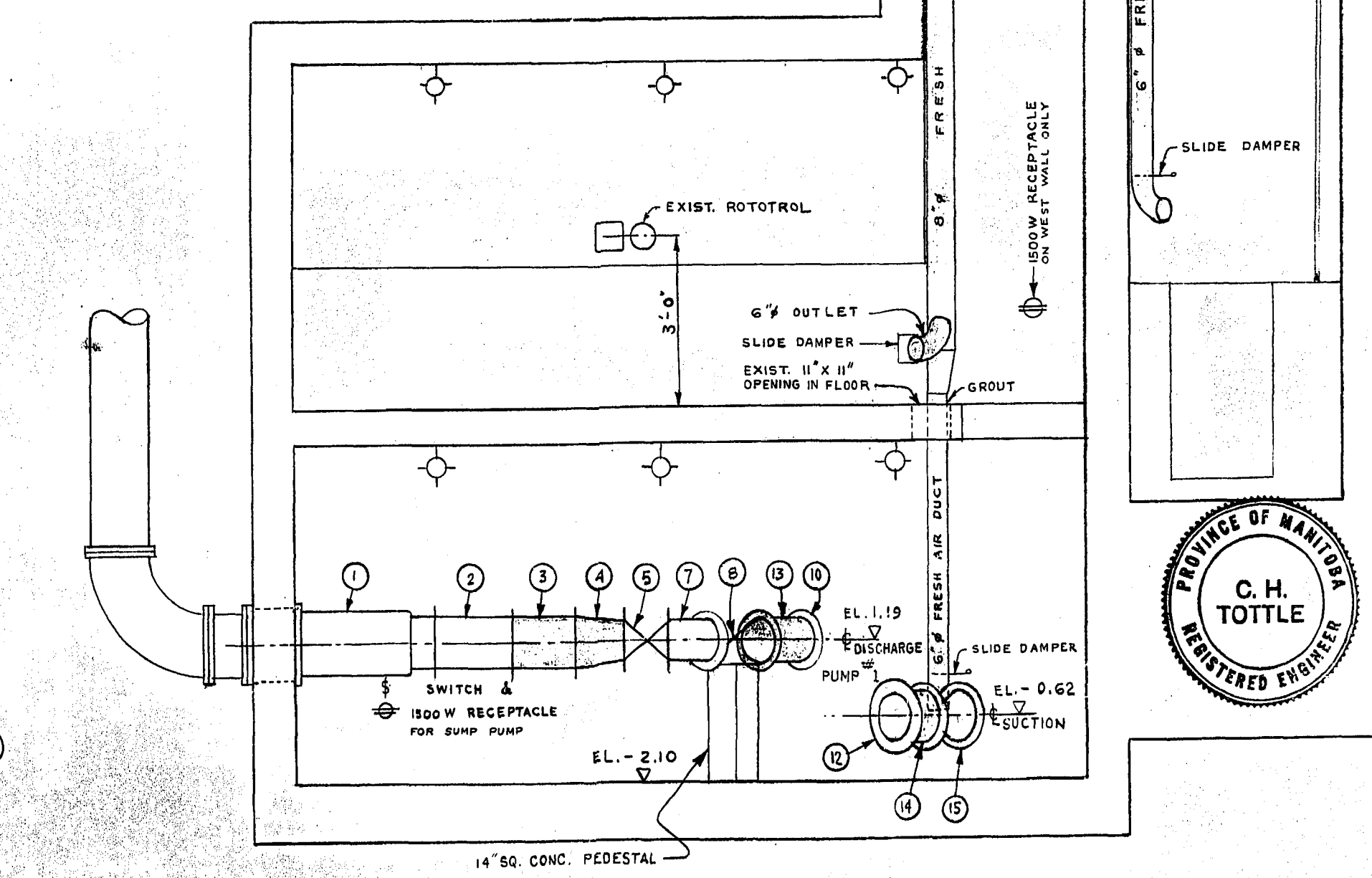
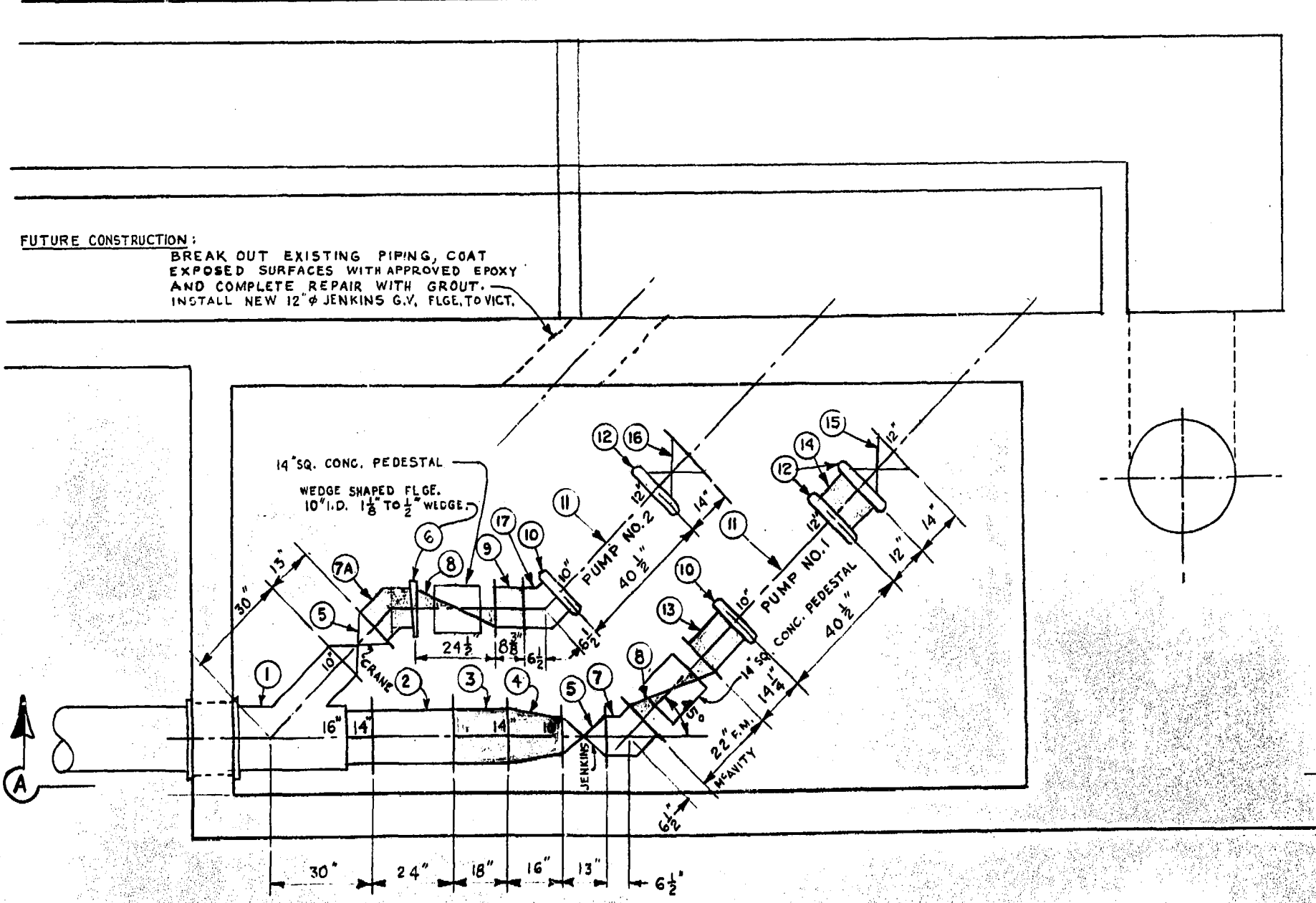
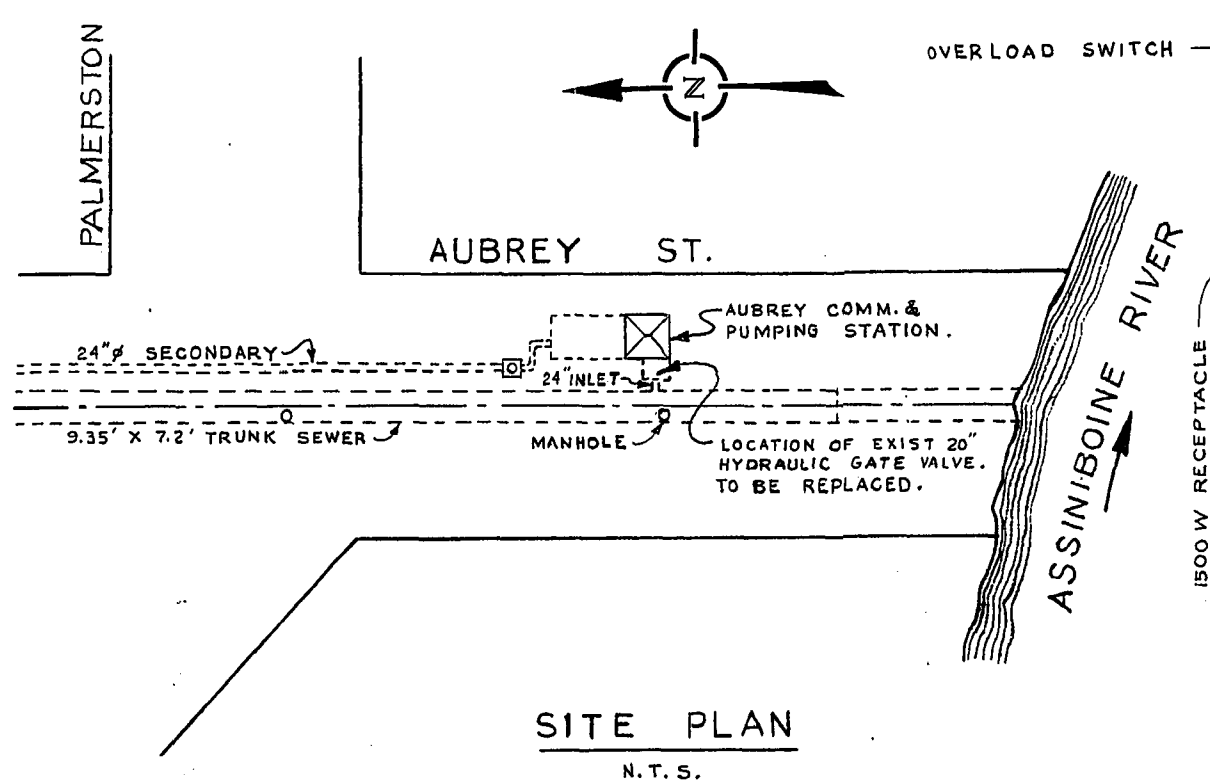
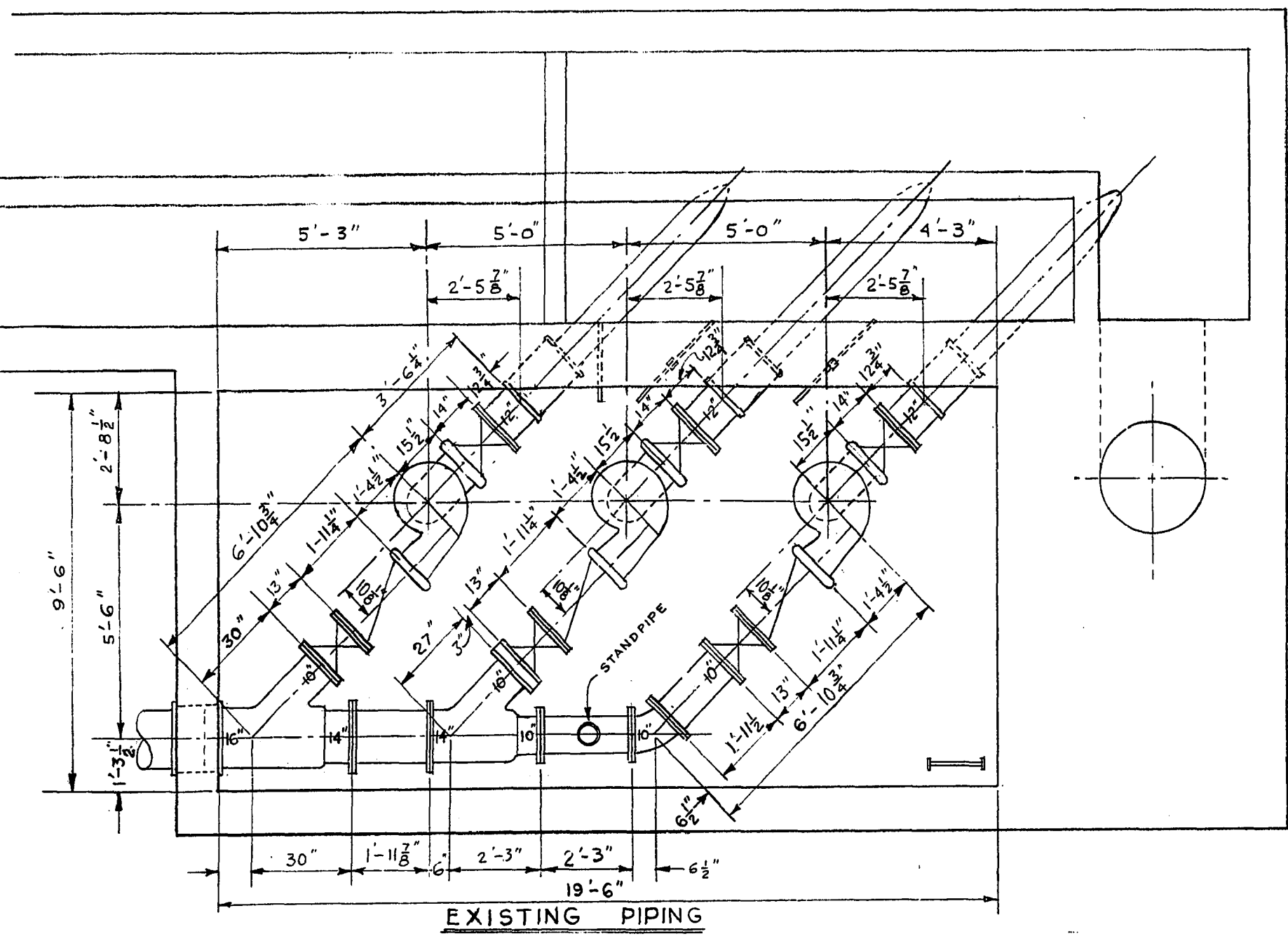
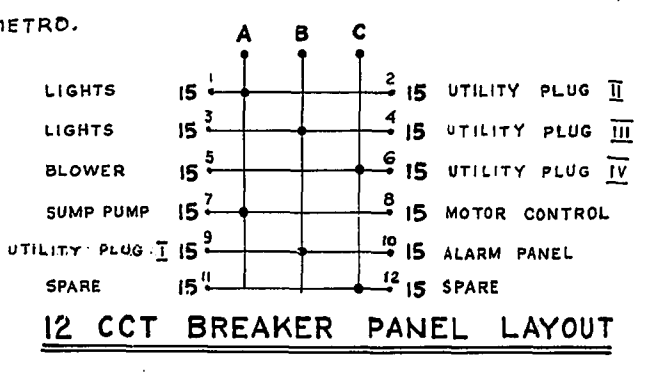


NOTES

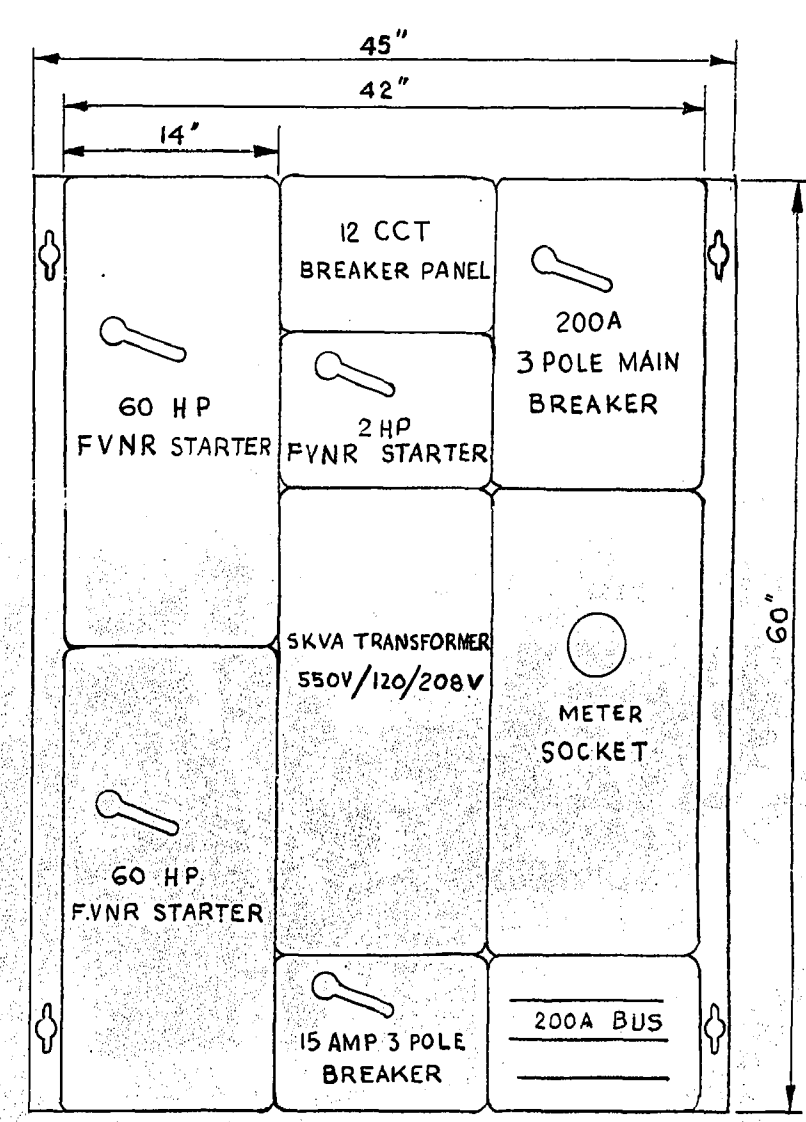
- 1 REMOVE EXISTING FRESH AIR DUCTS, FAN, MOTOR & SUPPORTS. INSTALL NEW FRESH AIR DUCTS, FAN, MOTOR & SUPPORTS AS SHOWN SHADED ON DRAWING. DO NOT REMOVE EXIST. EXHAUST DUCT ON WEST WALL.
- 2 METRO TO SUPPLY 2 MONARCH PUMPS WITH SHAFTS & MOTORS & 1-20" JENKINS HYDRAULIC GATE VALVE. NOT SHOWN ON DRAWING. INSTALLATION BY CONTRACTOR.
- 3 CONTRACTOR IS RESPONSIBLE FOR ALL NECESSARY PUMP & PIPING SUPPORTS.
- 4 ALL GROUT SHALL BE NON-SHRINKABLE FERROGROUT OR APPROVED EQUAL.
- 5 ALL PIPING CLASS 22 CAST IRON.



MATERIAL LIST						
NO.	AMT	SIZE	DESCRIPTION	END	LENGTH	REMARKS
1	1	16X14X10"	C.I. TEE	FLGE.- FLGE		EXISTING
2	1	14"	C.I. FILLER	" "	24"	"
3	1	14"	C.I. "	" "	"	"
4	1	14"X10"	C.I. REDUCER	" "	16"	NEW
5	2	10"	C.I. GATE VALVES JENKINS	FLGE.- FLGE	13"	EXISTING
6	1	10"	C.I. FILLER WEDGE SHAPED	FLANGE 1/2 TO 1/2 WEDGE		NEW
7	1	10"	C.I. ELBOWS	FLGE.- FLGE	6 1/2"	1-EXIST. 1-NEW
8	2	10"	C.I. CHECK VALVES	" "	24 1/2"	NEW
9	1	10"	C.I. FILLER	" "	8 3/8"	"
10	2	10"	VICTAULIC COUPLINGS	" "	12"	EXIST., REPLACE RUBBER GASKETS
11	2	12"X10"	MONARCH PUMPS	VICT.- VICT	40 1/2"	NEW
12	3	12"	VICTAULIC COUPLINGS	" "		EXIST., REPLACE RUBBER GASKETS
13	1	10"	C.I. FILLER	FLGE.- VICT	14 1/2"	NEW
14	1	12"	C.I. "	VICT.- CT	12"	"
15	1	12"	C.I. GATE VALVE JENKINS	FLGE.- VICT	14"	EXISTING
16	1	12"	C.I. "	FLGE.- FLGE	14"	"
17	1	10"	C.I. ELBOW	FLGE.- VICT	6 1/2"	NEW
18	1	10"	INLET FAN	" "	"	"
19	1	2	HP MOTOR	" "	"	DUAL SPEED
20	1	2'X2'X 1/2"	SUPPORT	" "	"	WALL MOUNTED
21	1	TO SUIT	CARNES ALUM. LOUVER MODEL L-36	" "	"	"
7A	1	10"	C.I. ELBOW	FLGE.- FLGE	32 3/4"	SPECIAL CASTING



- LIST OF FIXTURES
- PUMP FLOOR - 3 CEILING FIXTURES; SUMP PUMP 1/2 HP 120 V. SUBM. (OVERLOAD DISCONNECT PLUS PLUG)
 - PUMP MOTOR FLOOR - 3 CEILING FIXTURES; UTILITY PLUG I
 - COMM MOTOR FLOOR - 2 CEILING FIXTURES; UTILITY PLUGS II, III BLOWER (OVERLOAD DISCONNECT)
 - VALVE CHAMBER - 1 WALL FIXTURE
 - COMM CHAMBER - 4 WALL FIXTURES
 - TOP FLOOR - 2 CEILING FIXTURES; UTILITY PLUG IV; 2 POLE LIGHTING SWITCH (2 SPEED SELECTROL SWITCH FOR BLOWER)



THE METROPOLITAN CORPORATION OF GREATER WINNIPEG
WATERWORKS & WASTE DISPOSAL DIVISION
A. PENMAN - DIRECTOR

SEWAGE DISPOSAL DEPT.
ALTERATIONS TO AUBREY ST. COMM. & PUMPING STATION

DES. *W. C. H. K.*
DRN. *H. B.*
ENG. DES. *W. C. H. K.*
ENG. OPS. *W. C. H. K.*
APPROVED

DATE 27 NOV 70

SCALE 1" = 1'-0"
AS NOTED.

DRAWING NO. 498

REVIEWED BY: DCAN CHECKED
TRY.
APPROVED AS JULY
BY: LB

