

STAGE 1 WORKS

S-1.1 CONSTRUCT DEWATERING WELLS AND PIPING ON THE NORTH SIDE OF 1500 LDS C/W MANHOLE AT 750 COMBINED SEWER. (SEE SP E7)

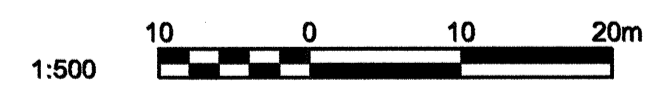
NOTES

1. THE CITY MAY CONSIDER FOR SHORT DURATIONS MAINTAINING ONE SOUTHBOUND LANE SUNDAYS TO THURSDAYS - 10PM TO 6AM AND FRIDAYS 10PM TO 6AM.

PRELIMINARY DRAWING

NOT TO BE USED FOR CONSTRUCTION

APEGM
Certificate of Authorization
TETRA TECH WEI Inc.
No. 5313 Date: April 30, 2014



BID OPPORTUNITY No. 425-2013

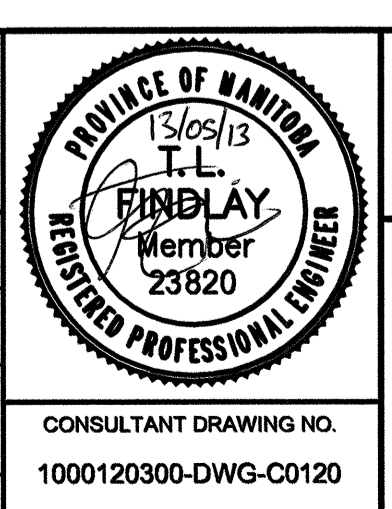
EXISTING	LEGEND-PLAN	PROPOSED	EXISTING	LEGEND-PLAN	PROPOSED	EXISTING	LEGEND-PLAN	PROPOSED
⊕	HYDRANT		—	LAND DRAINAGE SEWER (300 LDS)		→	LANE CLOSURE	
⊙	VALVE		—	LAND DRAINAGE SEWER (FUTURE CONTRACT)		→	TRAFFIC FLOW	
○	MANHOLE		—	WATERMAIN (150 WM)		→	LANE	
□	CATCHBASIN		—	COMBINED SEWER (300 CS)		→	POLY POST	
▽	CURB INLET		—	TRAFFIC SIGNAL		→	TEMPORARY PAVEMENT	
•	HYDRO POLE		—	GAS		→	SIGN POST	
•	LIGHT STANDARD		—	HYDRO		→	SIDEWALK	
—	ANCHOR		—	MTS		→	CURB	
○	TREE		—	PROPERTY LINE		→		

LOCATION APPROVED UNDERGROUND STRUCTURES	DATE
SUPV. U/G STRUCTURES COMMITTEE	

NOTE: LOCATION OF UNDERGROUND STRUCTURES AS SHOWN ARE BASED ON THE BEST INFORMATION AVAILABLE. BUT NO GUARANTEE IS GIVEN THAT ALL EXISTING UTILITIES ARE SHOWN OR THAT THE GIVEN LOCATIONS ARE EXACT. CONFIRMATION OF EXISTENCE AND EXACT LOCATION OF ALL SERVICES MUST BE OBTAINED FROM THE INDIVIDUAL UTILITIES BEFORE PROCEEDING WITH CONSTRUCTION.

B.M. ELEV.	NO.	REVISIONS	DATE	BY
	01	ISSUED FOR TENDER	13.05.13	TLF
	00	ISSUED FOR APPROVAL	13.05.10	TLF

TETRA TECH	
DESIGNED BY: DAL	CHECKED BY:
DRAWN BY: GMD	APPROVED BY:
HOR. SCALE: 1:500	RELEASED FOR CONSTRUCTION:
VERTICAL:	DATE: 13.03.06



THE CITY OF WINNIPEG
WATER AND WASTE DEPARTMENT

FERRY ROAD AND RIVERBEND COMBINED SEWER RELIEF WORKS CONTRACT 1

PROPOSED TRAFFIC CONTROL
NESS AVENUE STAGE 1

CITY DRAWING NUMBER: SHEET 20 OF 26
C0120

CONSULTANT DRAWING NO. 1000120300-DWG-C0120