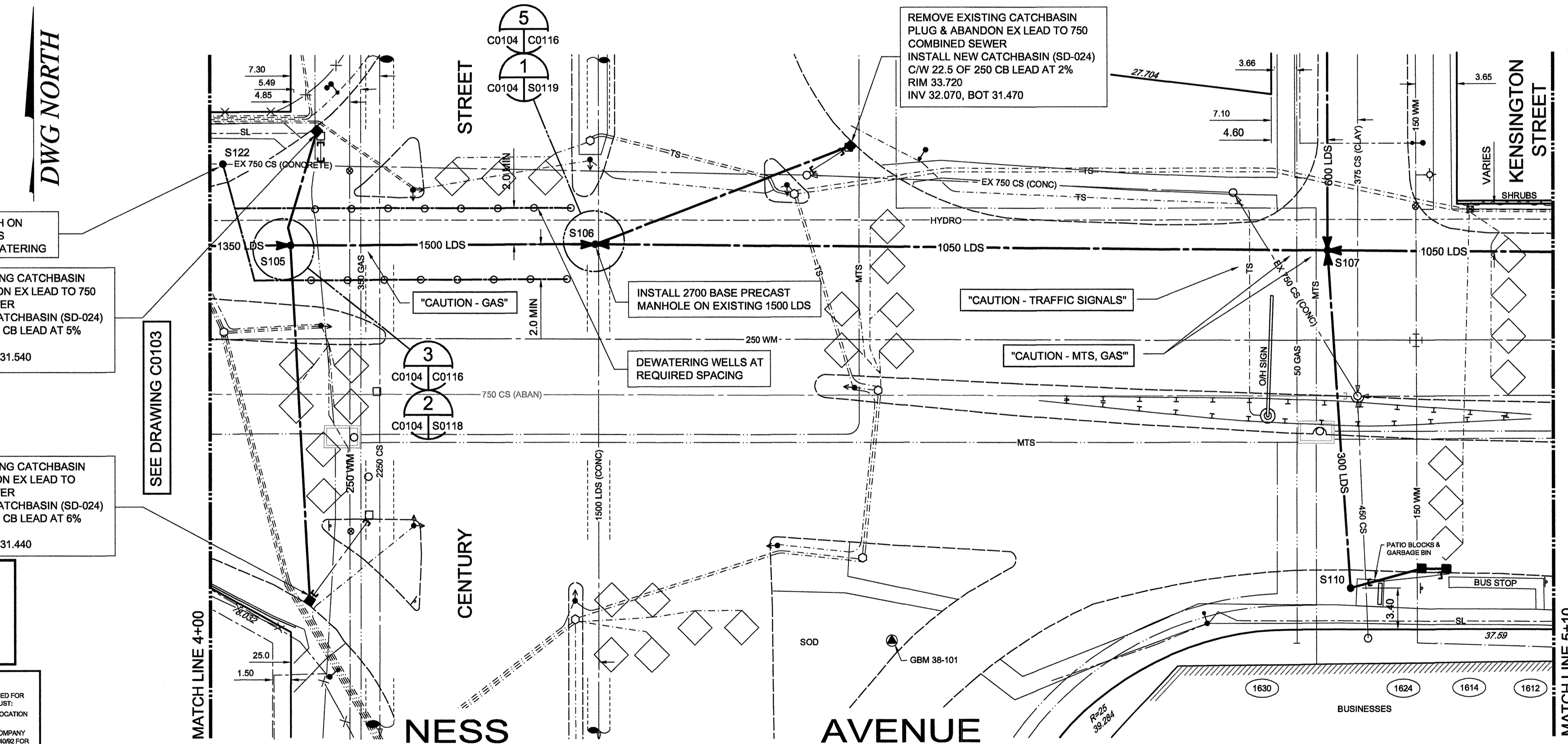
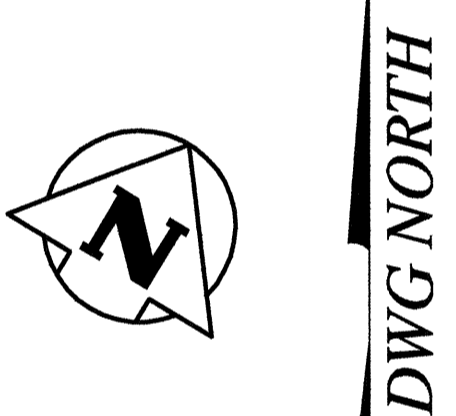


234.0
233.0
232.0
231.0
230.0
229.0
228.0
227.0
226.0
225.0
224.0



- CONSTRUCTION NOTES:**
1. LOCATION OF ALL SEWER AND WATER LINES TO BE CONFIRMED IN THE FIELD.
 2. SEWER AND WATER SERVICES SHOWN ON DRAWINGS ARE APPROXIMATE ONLY.
 3. INSTALL NEW SEWER AND CATCHBASIN LEADS BY TRENCHLESS METHODS, UNLESS NOTED OTHERWISE.
 4. ALL SHAFTS ON NESS AVENUE TO HAVE CLASS 1 BACKFILL.
 5. INSTALL TYPE 'B' RISERS ON CATCHBASIN LEADS AS DIRECTED BY THE CONSULTANT.
- GENERAL NOTES:**
1. CHAINAGE IS ALONG NORTH LIMIT OF NESS AVENUE.
 2. STATION 1+00 = EAST LIMIT OF BERRY STREET
 3. SEE DRAWINGS C0120 TO C0126 FOR TRAFFIC STAGING ON NESS AVENUE AND CENTURY STREET.
 4. SEE SPECIFICATIONS FOR DETAILED TEST HOLE INFORMATION.



TEMPORARY MH ON EXISTING 750 CS USED FOR DEWATERING

REMOVE EXISTING CATCHBASIN PLUG & ABANDON EX LEAD TO 750 COMBINED SEWER
INSTALL NEW CATCHBASIN (SD-024)
C/W 10.0 OF 250 CB LEAD AT 5%
RIM 33.790
INV 32.140, BOT 31.540

REMOVE EXISTING CATCHBASIN PLUG & ABANDON EX LEAD TO 750 COMBINED SEWER
INSTALL NEW CATCHBASIN (SD-024)
C/W 29.0 OF 250 CB LEAD AT 6%
RIM 33.690
INV 32.040, BOT 31.440

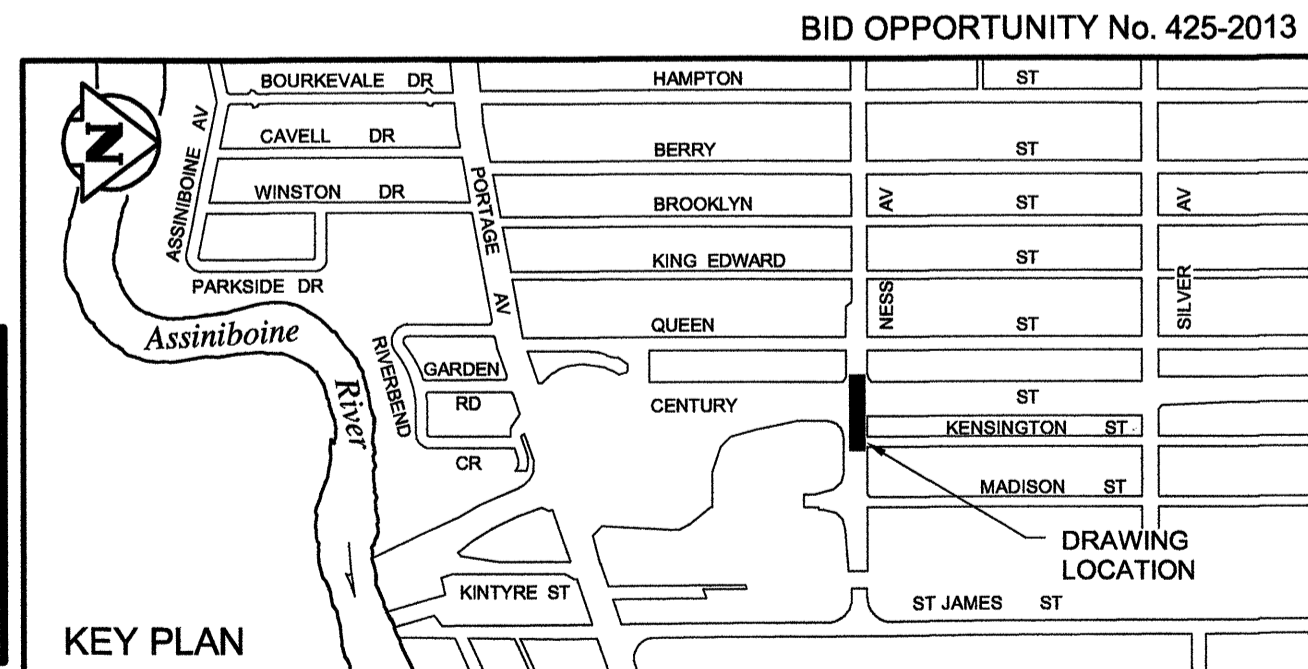
SEE DRAWING C0103

APEGM
Certificate of Authorization
TETRA TECH WEI Inc.
No. 5313 Date: April 30, 2014

WARNING
IF POWER EQUIPMENT OR EXPLOSIVES ARE TO BE USED FOR EXCAVATION ON THIS PROJECT THE CONTRACTOR MUST:
1. NOTIFY THE GAS COMPANY OF THE PROPOSED LOCATION OF EXCAVATION.
2. TAKE PRECAUTION TO AVOID DAMAGE TO GAS COMPANY INSTALLATIONS. SEE PROVINCIAL REGULATION 140/99 FOR DETAILS.

SEE DRAWING C0105

PRELIMINARY DRAWING
NOT TO BE USED FOR CONSTRUCTION



EXISTING	LEGEND-PLAN	PROPOSED	EXISTING	LEGEND-PLAN	PROPOSED	EXISTING	LEGEND-PLAN	PROPOSED
150 WM	WATERMAIN	150 WM	150 WM	BEND	ANCHOR	150 WM	ANCHOR	ANCHOR
400 FM	FEEDERMAIN	400 FM	400 FM	TEE	TREE	400 FM	TREE	TREE
300 LDS	LAND DRAINAGE SEWER	300 LDS	300 LDS	PLUG	LEGAL DIMENSION	300 LDS	LEGAL DIMENSION	LEGAL DIMENSION
250 WWS	WASTEWATER SEWER	250 WWS	250 WWS	SIGNALS SERVICE PIT	SURVEY BAR	250 WWS	SURVEY BAR	SURVEY BAR
300 CS	COMBINED SEWER	300 CS	300 CS	MANHOLE	TRAFFIC SIGNAL	300 CS	TRAFFIC SIGNAL	TRAFFIC SIGNAL
200 FCM	FORCEMAIN	200 FCM	200 FCM	CATCHBASIN	GAS	200 FCM	GAS	GAS
	JUNCTIONS			CURB INLET	HYDRO		HYDRO	HYDRO
	HYDRANT			ADDRESS	MTS		MTS	MTS
	VALVE			HYDRO POLE	SIDEWALK		SIDEWALK	SIDEWALK
	REDUCER			LIGHT STANDARD	CURB		CURB	CURB

LOCATION APPROVED UNDERGROUND STRUCTURES

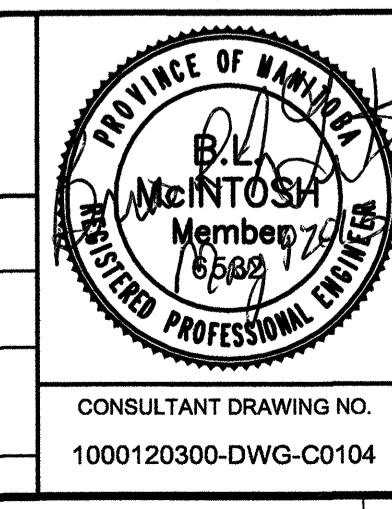
SUPV. U/G STRUCTURES COMMITTEE DATE

NOTE: LOCATION OF UNDERGROUND STRUCTURES AS SHOWN ARE BASED ON THE BEST INFORMATION AVAILABLE. BUT NO GUARANTEE IS GIVEN THAT ALL EXISTING UTILITIES ARE SHOWN OR THAT THE GIVEN LOCATIONS ARE EXACT. CONFIRMATION OF EXISTENCE AND EXACT LOCATION OF ALL SERVICES MUST BE OBTAINED FROM THE INDIVIDUAL UTILITIES BEFORE PROCEEDING WITH CONSTRUCTION.

NO.	REVISIONS	DATE	BY
01	ISSUED FOR TENDER	13.05.13	BLM
00	ISSUED FOR APPROVAL	13.05.10	BLM

TETRA TECH

DESIGNED BY: KJM, GWC
CHECKED BY: [Signature]
DRAWN BY: GMD
APPROVED BY: [Signature]
HOR. SCALE: 1 : 250
VERTICAL: 1 : 50
RELEASED FOR CONSTRUCTION
DATE: 12.09.05



THE CITY OF WINNIPEG
WATER AND WASTE DEPARTMENT

FERRY ROAD AND RIVERBEND COMBINED SEWER RELIEF WORKS CONTRACT 1
NESS AVENUE
7m WEST OF CENTURY STREET TO 8m EAST OF KENSINGTON STREET

CITY DRAWING NUMBER LD-7108
SHEET 4 OF 26
DRAWING LOCATION C0104