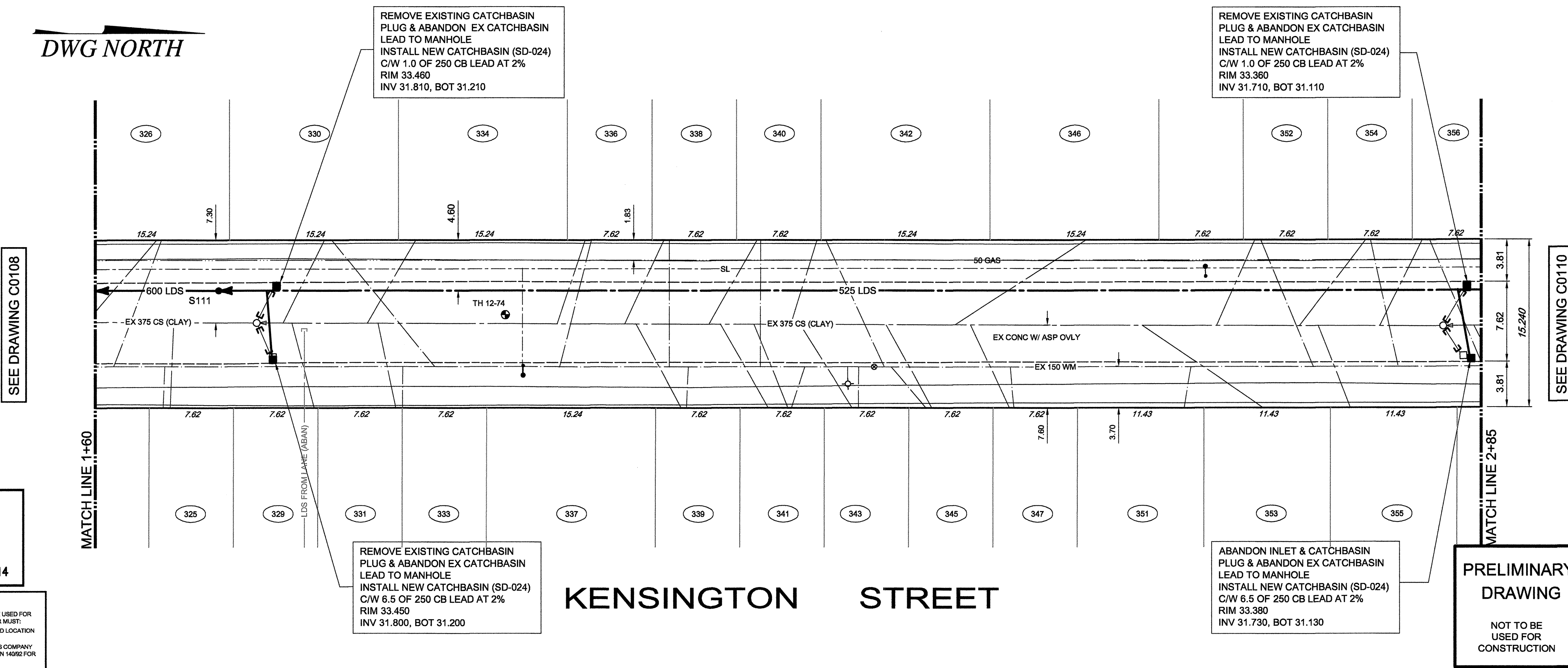


DWG NORTH



- CONSTRUCTION NOTES:**
1. LOCATION OF ALL SEWER AND WATER LINES TO BE CONFIRMED IN THE FIELD.
 2. SEWER AND WATER SERVICES SHOWN ON DRAWINGS ARE APPROXIMATE ONLY.
 3. INSTALL NEW SEWER AND CATCHBASIN LEADS BY TRENCHLESS METHODS, UNLESS NOTED OTHERWISE.
 4. ALL SHAFTS ON NESS AVENUE TO HAVE CLASS 1 BACKFILL.
 5. INSTALL TYPE 'B' RISERS ON CATCHBASIN LEADS AS DIRECTED BY THE CONSULTANT.
- GENERAL NOTES:**
1. CHAINAGE IS ALONG WEST LIMIT OF KENSINGTON STREET.
 2. STATION 1+00 = NORTH LIMIT OF NESS AVENUE
 3. SEE DRAWINGS C0120 TO C0126 FOR TRAFFIC STAGING ON NESS AVENUE AND CENTURY STREET.
 4. SEE SPECIFICATIONS FOR DETAILED TEST HOLE INFORMATION.

APEGM
Certificate of Authorization
TETRA TECH WEI Inc.
No. 5313 Date: April 30, 2014

WARNING
IF POWER EQUIPMENT OR EXPLOSIVES ARE TO BE USED FOR EXCAVATION ON THIS PROJECT THE CONTRACTOR MUST:
1. NOTIFY THE GAS COMPANY OF THE PROPOSED LOCATION OF EXCAVATION.
2. TAKE PRECAUTION TO AVOID DAMAGE TO GAS COMPANY INSTALLATIONS. SEE PROVINCIAL REGULATION 14092 FOR DETAILS.

EXISTING	LEGEND-PLAN	PROPOSED	EXISTING	LEGEND-PLAN	PROPOSED	EXISTING	LEGEND-PLAN	PROPOSED
150 WM	WATERMAIN	150 WM	ANCHOR			400 FM	FEEDERMAIN	400 FM
300 LDS	LAND DRAINAGE SEWER	300 LDS	TREE			300 CS	COMBINED SEWER	300 CS
250 WWS	WASTEWATER SEWER	250 WWS	LEGAL DIMENSION	15.240		200 FCM	FORCEMAIN	200 FCM
300 CS	COMBINED SEWER	300 CS	SURVEY BAR				JUNCTIONS	
200 FCM	FORCEMAIN	200 FCM	TRAFFIC SIGNAL				HYDRANT	
			GAS				VALVE	
			HYDRO				REDUCER	
			MTS					
			SIDEWALK					
			CURB					
			LEGEND-PLAN					

LOCATION APPROVED UNDERGROUND STRUCTURES

SUPV. U/G STRUCTURES COMMITTEE	DATE

NOTE:
LOCATION OF UNDERGROUND STRUCTURES AS SHOWN ARE BASED ON THE BEST INFORMATION AVAILABLE. BUT NO GUARANTEE IS GIVEN THAT ALL EXISTING UTILITIES ARE SHOWN OR THAT THE GIVEN LOCATIONS ARE EXACT. CONFIRMATION OF EXISTENCE AND EXACT LOCATION OF ALL SERVICES MUST BE OBTAINED FROM THE INDIVIDUAL UTILITIES BEFORE PROCEEDING WITH CONSTRUCTION.

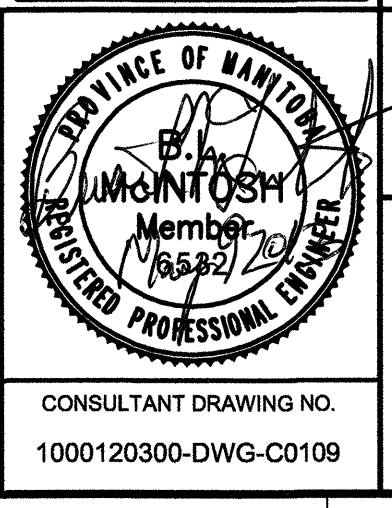
B.M.	ELEV.

TETRA TECH

DESIGNED BY: KJM
CHECKED BY:
DRAWN BY: GMD
APPROVED BY:
RELEASED FOR CONSTRUCTION

HOR. SCALE: 1 : 250
VERTICAL: 1 : 50

DATE: 12.12.18

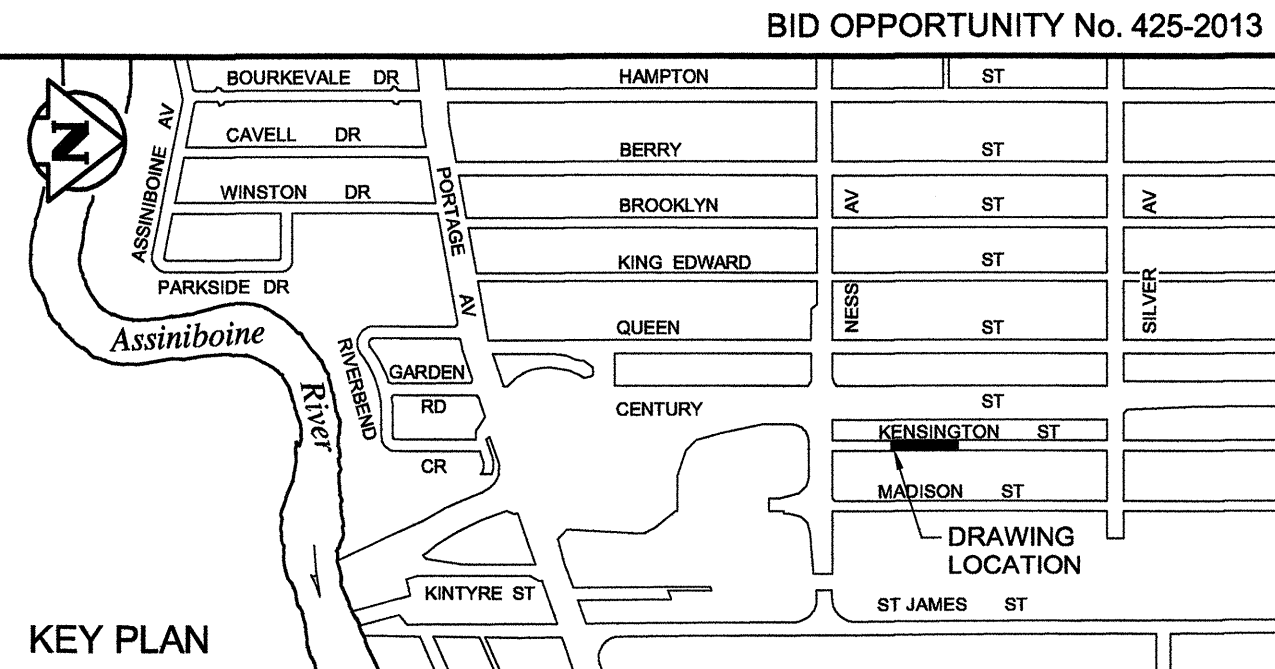


THE CITY OF WINNIPEG
WATER AND WASTE DEPARTMENT

FERRY ROAD AND RIVERBEND
COMBINED SEWER RELIEF WORKS
CONTRACT 1

KENSINGTON STREET
60m NORTH OF NESS AVENUE TO
185m NORTH OF NESS AVENUE

CITY DRAWING NUMBER
LD-7113
SHEET 9 OF 26
C0109



PRELIMINARY DRAWING
NOT TO BE USED FOR CONSTRUCTION