

REFERENCE NOTES

- A. PAVEMENT DIMENSIONS ARE TO BACK OF CURB
- B. BASELINE IS CENTRE LINE RIGHT-OF-WAY
- C. PROPERTY LINES OBTAINED FROM CITY OF WINNIPEG L.B.I.S., AND NO SCALE FACTOR WAS APPLIED
- D. REFER TO AECOM FIELD BOOK NO. 4798

CONSTRUCTION NOTES

- 1. PLACE NEW ASPHALTIC PAVEMENT TYPE 1A (AVERAGE THICKNESS 85mm)
- 2. REMOVE EXISTING CONCRETE PAVEMENT AND CONSTRUCT NEW 200mm REINFORCED CONCRETE PAVEMENT c/w 85mm ASPHALT OVERLAY
- 3. REMOVE EXISTING FRAME AND COVER AND INSTALL NEW FRAME AND COVER
- 4. ADJUST EXISTING MANHOLE/CATCH BASIN TO GRADE
- 5. INSTALL NEW CAST IRON RISER RING
- 6. CONSTRUCT NEW BARRIER CURB (150mm REVEAL HT. SEPARATE)
- 7. CONSTRUCT NEW MODIFIED BARRIER CURB (150mm REVEAL HT. SEPARATE)
- 8. CONSTRUCT NEW RAMP CURB (10mm REVEAL HT. MONOLITHIC)
- 9. REMOVE EXISTING PATIO BLOCK BUS PAD AND CONSTRUCT NEW 100mm CONCRETE PLUS PAD
- 10. RENEW EXISTING 100mm CONCRETE SIDEWALK
- 11. ADJUST EXISTING WATER VALVE TO GRADE
- 12. ADJUST EXISTING CURB STOP
- 13. REMOVE AND REINSTALL EXISTING PAVERS
- 14. REMOVE AND REINSTALL EXISTING PATIO BLOCKS



METRIC
WHOLE NUMBERS INDICATE MILLIMETRES
DECIMALIZED NUMBERS INDICATE METRES

150 mm W.M.	150 mm W.M.	HYDRO	C PROFILE
HYDRANT	HYDRANT	M.T.S.	NORTH/WEST GUTTER
VALVE	VALVE	CONCRETE	SOUTH/EAST GUTTER
LAND DRAINAGE SEWER	300mm L.D.S.	ASPHALT	N/W PROPERTY LINE
WASTEWATER SEWER	250mm W.W.S.	PROPERTY LINE	S/E PROPERTY LINE
MANHOLE	MANHOLE	SURVEY BAR	
CATCH BASIN	CATCH BASIN	ELEVATION (35.750)	
CURB INLET	CURB INLET	TREE	
JUNCTIONS	JUNCTIONS	SIDEWALK RAMP	
CULVERT	CULVERT	CONCRETE SIDEWALK	
GAS	GAS	FENCE	
EXISTING	LEGEND - PLAN	PROPOSED	LEGEND - PROFILE

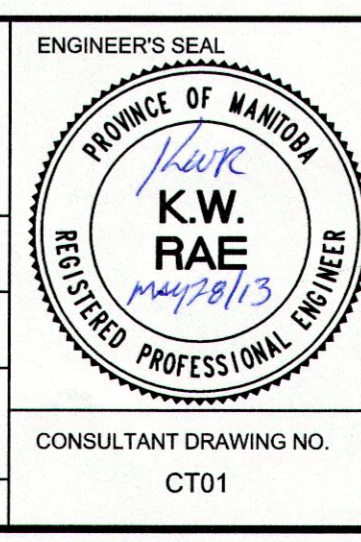
LOCATION APPROVED UNDERGROUND STRUCTURES

SUPV. U/G STRUCTURES COMMITTEE DATE

NOTE:
LOCATION OF UNDERGROUND STRUCTURES AS SHOWN ARE BASED ON THE BEST INFORMATION AVAILABLE. BUT NO GUARANTEE IS GIVEN THAT ALL EXISTING UTILITIES ARE SHOWN OR THAT THE GIVEN LOCATIONS ARE EXACT. CONFIRMATION OF EXISTENCE AND EXACT LOCATION OF ALL SERVICES MUST BE OBTAINED FROM THE INDIVIDUAL UTILITIES BEFORE PROCEEDING WITH CONSTRUCTION.

B.M.	83R676	S.E. Cor. Garton Ave. & Inkster Garden Dr., Tblt. on top of 0.65m dia. x 2.4m iron pipe, 2.3m W. of E.L. of Garton Ave. & 8.1m N. of S.L. of Inkster Garden Dr.
0	ISSUED FOR TENDER	05/30/2013 BC
A	ISSUED FOR REVIEW	05/17/2013 BC
NO.	REVISIONS	DATE BY

DESIGNED BY	BC	CHECKED BY	KWR
DRAWN BY	SS/RT	APPROVED BY	
HOR. SCALE:	1:250	RELEASED FOR CONSTRUCTION BY:	05/08/2013
VERTICAL:	1:10	DATE	2013/05/01



THE CITY OF WINNIPEG
PUBLIC WORKS DEPARTMENT
ENGINEERING DIVISION

2013 LOCAL STREET RENEWAL PROGRAM

GARTON AVE. - KING EDWARD ST. TO INKSTER GARDEN DR.
PAVEMENT REHABILITATION
KING EDWARD ST TO STATION 0+120

CITY DRAWING NUMBER
SHEET 1 OF 16

CONSULTANT DRAWING NO. CT01