

REFERENCE NOTES

- A. PAVEMENT DIMENSIONS ARE TO BACK OF CURB
- B. BASELINE IS CENTRE LINE RIGHT-OF-WAY
- C. PROPERTY LINES OBTAINED FROM CITY OF WINNIPEG L.B.I.S., AND NO SCALE FACTOR WAS APPLIED
- D. REFER TO AECOM FIELD BOOK NO. 4798

CONSTRUCTION NOTES

1. PLACE NEW ASPHALTIC PAVEMENT TYPE 1A (AVERAGE THICKNESS 95mm)
2. REMOVE EXISTING CONCRETE PAVEMENT AND CONSTRUCT NEW 200mm REINFORCED CONCRETE PAVEMENT c/w 50mm ASPHALT OVERLAY
3. CONSTRUCT NEW BARRIER CURBS (150mm REVEAL HT. SEPARATE)
4. CONSTRUCT NEW RAMP CURBS (10mm REVEAL HT. MONOLITHIC)
5. REMOVE EXISTING PATIO BLOCK BUS PAD AND CONSTRUCT NEW 100mm CONCRETE BUS PAD
6. RENEW EXISTING 100mm CONCRETE SIDEWALK
7. REMOVE EXISTING CURB AND GUTTER INLET AND CATCH BASIN
8. INSTALL NEW CURB AND GUTTER INLET c/w CATCH BASIN (SD-024) AND CONNECT TO EXISTING LEAD
9. ADJUST EXISTING MANHOLE/CATCH BASIN TO GRADE
10. REMOVE EXISTING FRAME AND COVER AND PLACE NEW FRAME AND SOLID COVER (AP-004/AP-005)
11. INSTALL NEW CAST IRON RISER RING
12. ADJUST EXISTING WATER VALVE TO GRADE
13. ADJUST EXISTING CURB STOP



METRIC
WHOLE NUMBERS INDICATE MILLIMETRES
DECIMALIZED NUMBERS INDICATE METRES

150 mm W.M.	WATERMAIN	150 mm W.M.	HYDRO	— X —	C PROFILE
Hydrant symbol	HYDRANT	Hydrant symbol	M.T.S.	North/West Gutter symbol	NORTH/WEST GUTTER
Valve symbol	VALVE	Valve symbol	CONCRETE	South/East Gutter symbol	SOUTH/EAST GUTTER
300mm L.D.S.	LAND DRAINAGE SEWER	300mm L.D.S.	ASPHALT	N/W PROPERTY LINE symbol	N/W PROPERTY LINE
250mm W.W.S.	WASTEWATER SEWER	250mm W.W.S.	PROPERTY LINE	S/E PROPERTY LINE symbol	S/E PROPERTY LINE
Manhole symbol	MANHOLE	Manhole symbol	SURVEY BAR		
Catch Basin symbol	CATCH BASIN	Catch Basin symbol	ELEVATION (35.750)		
Curb Inlet symbol	CURB INLET	Curb Inlet symbol	TREE		
Junctions symbol	JUNCTIONS	Junctions symbol	SIDEWALK RAMP		
Culvert symbol	CULVERT	Culvert symbol	CONCRETE SIDEWALK		
Gas symbol	GAS	Gas symbol	FENCE		
EXISTING	LEGEND - PLAN	PROPOSED	EXISTING	LEGEND - PLAN	PROPOSED

LOCATION APPROVED UNDERGROUND STRUCTURES

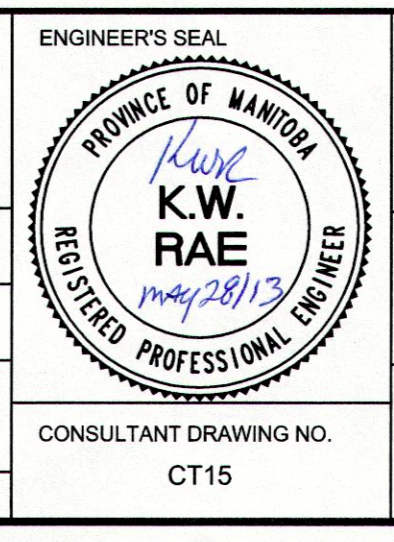
SUPV. U/G STRUCTURES COMMITTEE DATE

NOTE:
LOCATION OF UNDERGROUND STRUCTURES AS SHOWN ARE BASED ON THE BEST INFORMATION AVAILABLE. BUT NO GUARANTEE IS GIVEN THAT ALL EXISTING UTILITIES ARE SHOWN OR THAT THE GIVEN LOCATIONS ARE EXACT. CONFIRMATION OF EXISTENCE AND EXACT LOCATION OF ALL SERVICES MUST BE OBTAINED FROM THE INDIVIDUAL UTILITIES BEFORE PROCEEDING WITH CONSTRUCTION.

B.M. 83R676	S.E. Cor. Garton Ave. & Inkster Garden Dr. Tbt. on top of 0.05m dia. x 2.4m iron pipe, 2.3m W. of E.L. of Garton Ave. & 8.1m N. of S.L. of Inkster Garden Dr.		
ELEV. 232.589			
NO.	REVISIONS	DATE	BY
0	ISSUED FOR TENDER	05/30/2013	BC

AECOM

DESIGNED BY	BC	CHECKED BY	KWR
DRAWN BY	SS/RT	APPROVED BY	
HOR. SCALE:	1:250	RELEASED FOR CONSTRUCTION BY:	
VERTICAL:	1:10	DATE	2013/05/30



THE CITY OF WINNIPEG
PUBLIC WORKS DEPARTMENT
ENGINEERING DIVISION

2013 LOCAL STREET RENEWAL PROGRAM

GARTON AVE. - INKSTER GARDEN DR. TO MARIANNE ROAD
PAVEMENT REHABILITATION
STATION 0+230 TO STATION 0+345

CITY DRAWING NUMBER
SHEET 15 OF 16

CONSULTANT DRAWING NO. CT15