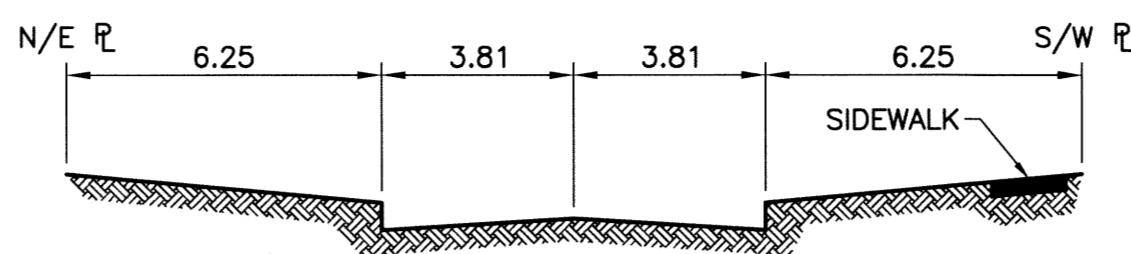


CONSTRUCTION SCOPE OF WORK

- CONCRETE PAVEMENT RENEWALS (SLAB, JOINT, ISOLATIONS)
- FULL BARRIER CURB RENEWAL
- PLACEMENT OF ASPHALT OVERLAY
- SIDEWALK RENEWAL
- CATCH-PIT INSTALLATION

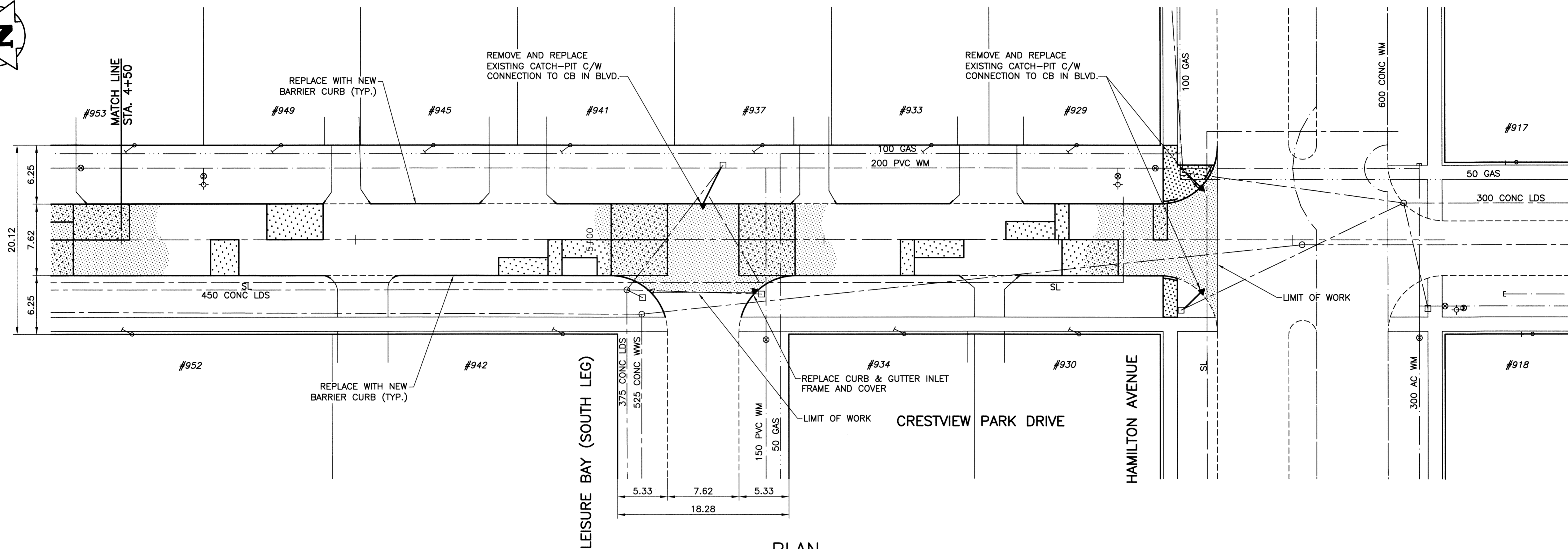
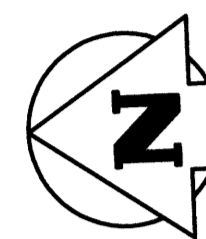
NOTES:

1. PAVEMENT DIMENSIONS ARE TO BACK OF CURB.
2. PROPERTY LINES OBTAINED FROM CITY OF WINNIPEG. NO SCALE FACTOR WAS APPLIED.
3. ALL SIDEWALK, CURB, AND CONCRETE REPAIRS TO BE MARKED OUT IN FIELD BY CONTRACT ADMINISTRATOR.
4. ALL ADJUSTMENTS FOR CATCHBASINS, MANHOLES, VALVES & INLETS TO BE MARKED IN FIELD BY CONTRACT ADMINISTRATOR.
5. PAVEMENT REPAIRS SHOWN ARE ONLY A REPRESENTATIVE APPROXIMATION OF THE TENDERED QUANTITIES.
6. ASPHALT TIE-INS ON APPROACHES TO BE DETERMINED IN FIELD BY THE CONTRACT ADMINISTRATOR.
7. ASPHALT GRADES TO BE MARKED IN FIELD BY THE CONTRACT ADMINISTRATOR.



TYPICAL SECTION

SCALE HOR. 1:150
VER. 1:50



PLAN

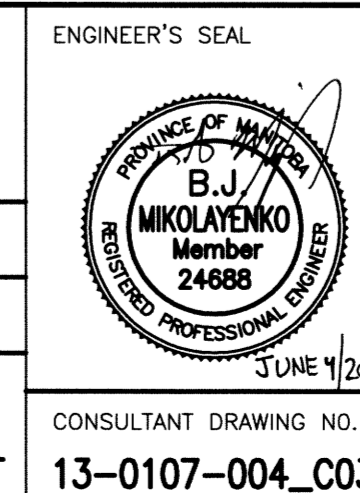
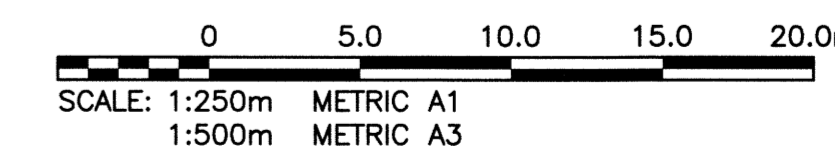
SCALE: 1:250

WARNING
NOTIFY THE GAS COMPANY OF THE PROPOSED LOCATION OF EXCAVATION. TAKE PRECAUTION TO AVOID DAMAGE TO GAS COMPANY INSTALLATIONS. SEE PROVINCIAL REGULATION 210/72 FOR DETAILS.

METRIC
WHOLE NUMBERS INDICATE MILLIMETRES
DECIMALIZED NUMBERS INDICATE METRES

PROPERTY LIMITS DELINEATION

DELINEATION OF PROPERTY LIMITS AS SHOWN ON THIS DWG DOES NOT REPRESENT A "LEGAL SURVEY". KGS GROUP MAKES NO REPRESENTATION OR WARRANTY AS TO THE ACCURACY OF PROPERTY LIMITS DELINEATED ON THIS DWG, NOR ON THE DIMENSIONAL ACCURACY OF DWG FEATURES RELATIVE TO THOSE PROPERTY LIMITS.



THE CITY OF WINNIPEG
PUBLIC WORKS DEPARTMENT
TRANSPORTATION ENGINEERING DIVISION

PROJECT TITLE: 2013 LOCAL STREET REHABILITATION PROGRAM
CRESTVIEW PARK DRIVE
VOYAGEUR AVE TO HAMILTON AVE
STA 4+50 TO HAMILTON AVE

SHEET OF: 03 OF 16
COMPUTER FILE NAME: 13-0107-004_CALL
DRAWING NUMBER: C03

LOCATION APPROVED UNDERGROUND STRUCTURES

SUPV. U/G STRUCTURES COMMITTEE DATE

NOTE: LOCATION OF UNDERGROUND STRUCTURES AS SHOWN ARE BASED ON THE BEST INFORMATION AVAILABLE BUT NO GUARANTEE IS GIVEN THAT ALL EXISTING UTILITIES ARE SHOWN OR THAT THE GIVEN LOCATIONS ARE EXACT. CONFIRMATION OF EXISTENCE AND EXACT LOCATION OF ALL SERVICES MUST BE OBTAINED FROM THE INDIVIDUAL UTILITIES BEFORE PROCEEDING WITH CONSTRUCTION.

B.M. 40-18	ELEV. 236.982	S.W. Cor. Crestview Park Dr. & Voyageur Ave., Tdlt. in N. Conc. Foundation No. 1028 Crestview Park Dr., 2m W. & 0.1m below stucco of N.E. Cor. of dwelling.
ISSUED FOR TENDER	13/06/04	BY: [Signature]
NO. REVISIONS	DATE	BY

DESIGNED BY: BJM	CHECKED BY: CR
DRAWN BY: GEL	APPROVED BY:
HOR. SCALE: 1:250	RELEASED FOR CONSTRUCTION:
VERTICAL: -	DATE: 13/05/13

300 LDS	LAND DRAINAGE SEWER	300 LDS					
250 WWS	WASTE WATER SEWER	250 WWS	+	TEST HOLE			
	GAS		→	GUY WIRE			
	HYDRO		→	LIGHT STANDARD			
	M.T.S.			BACK OF CURB			
150 WM	WATERMAIN	150 WM	----	CONCRETE			
+	VALVE	+	----	ASPHALT			
○	MANHOLE	○	----	SIDEWALK			
□	CATCH BASIN	□	----	PROPERTY LINE			
▽	CURB INLET	▽	+	SURVEY BAR			
•	POLES - MTS	•	○	GEODETIC BENCHMARK			
	POLES - HYDRO		○	ELEVATION	231.334	TTTT	32.231
EXISTING	LEGEND-PLAN	PROPOSED	EXISTING	LEGEND-PLAN	PROPOSED	EXISTING	LEGEND-PROFILE