

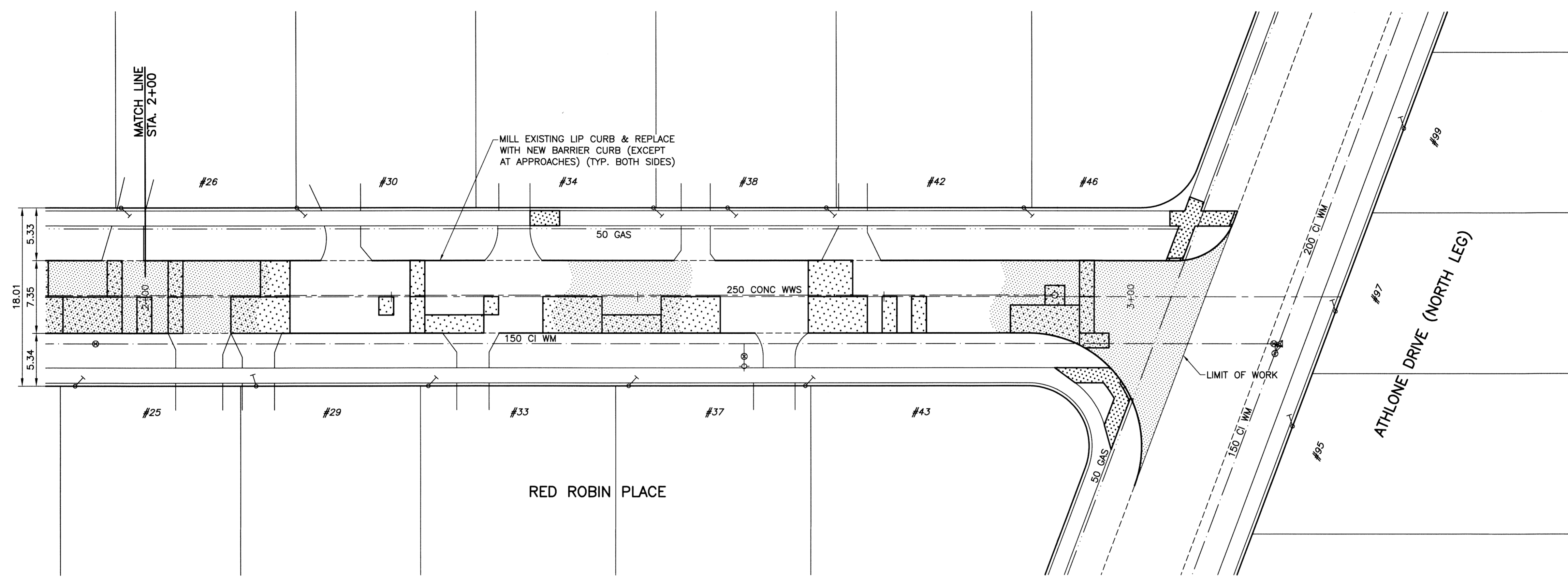
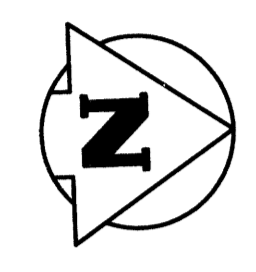
**TYPICAL SECTION**  
SCALE HOR. 1:150  
VER. 1:50

**CONSTRUCTION SCOPE OF WORK**

- MILLING OF EXISTING LIP CURB
- CONCRETE PAVEMENT RENEWALS (SLAB, JOINT, ISOLATIONS)
- CONSTRUCTION OF NEW BARRIER CURB
- SIDEWALK RENEWAL
- PLACEMENT OF ASPHALT OVERLAY

**NOTES:**

1. PAVEMENT DIMENSIONS ARE TO BACK OF CURB.
2. PROPERTY LINES OBTAINED FROM CITY OF WINNIPEG. NO SCALE FACTOR WAS APPLIED.
3. ALL SIDEWALK, CURB, AND CONCRETE REPAIRS TO BE MARKED OUT IN FIELD BY CONTRACT ADMINISTRATOR.
4. ALL ADJUSTMENTS FOR CATCHBASINS, MANHOLES, VALVES & INLETS TO BE MARKED IN FIELD BY CONTRACT ADMINISTRATOR.
5. PAVEMENT REPAIRS SHOWN ARE ONLY A REPRESENTATIVE APPROXIMATION OF THE TENDERED QUANTITIES.
6. ASPHALT TIE-INS ON APPROACHES TO BE DETERMINED IN FIELD BY THE CONTRACT ADMINISTRATOR.
7. ASPHALT GRADES TO BE MARKED IN FIELD BY THE CONTRACT ADMINISTRATOR.

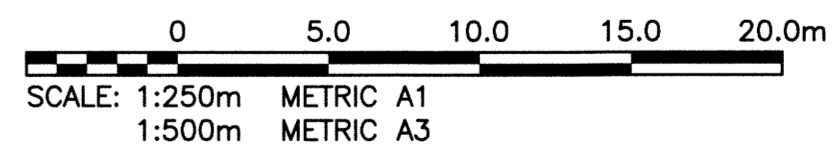
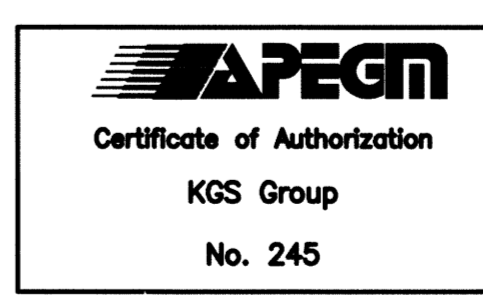


**PLAN**  
SCALE: 1:250

**WARNING**  
NOTIFY THE GAS COMPANY OF THE PROPOSED LOCATION OF EXCAVATION. TAKE PRECAUTION TO AVOID DAMAGE TO GAS COMPANY INSTALLATIONS. SEE PROVINCIAL REGULATION 210/72 FOR DETAILS.

**METRIC**  
WHOLE NUMBERS INDICATE MILLIMETRES  
DECIMALIZED NUMBERS INDICATE METRES

**PROPERTY LIMITS DELINEATION**  
DELINEATION OF PROPERTY LIMITS AS SHOWN ON THIS DWG DOES NOT REPRESENT A "LEGAL SURVEY". KGS GROUP MAKES NO REPRESENTATION OR WARRANTY AS TO THE ACCURACY OF PROPERTY LIMITS DELINEATED ON THIS DWG, NOR ON THE DIMENSIONAL ACCURACY OF DWG FEATURES RELATIVE TO THOSE PROPERTY LIMITS.



EXISTING	LEGEND-PLAN	PROPOSED	EXISTING	LEGEND-PLAN	PROPOSED	EXISTING	LEGEND-PROFILE	PROPOSED
300 LDS	LAND DRAINAGE SEWER	300 LDS	⊕	TEST HOLE				
250 WWS	WASTE WATER SEWER	250 WWS	⊕	GUY WIRE				
	GAS		→	LIGHT STANDARD				
	HYDRO		⊕	BACK OF CURB				
	M.T.S.		---	CONCRETE				
150 WM	WATERMAIN	150 WM	---	ASPHALT				
⊕	HYDRANT	⊕	⊕	SIDEWALK				
⊕	VALVE	⊕	⊕	PROPERTY LINE				
○	MANHOLE	○	⊕	SURVEY BAR				
□	CATCH BASIN	□	⊕	GEODETTIC BENCHMARK				
▽	CURB INLET	▽	⊕	ELEVATION				
•	POLES	•	231.334					
	T-MTS							
	H-HYDRO							

**LOCATION APPROVED UNDERGROUND STRUCTURES**

SUPV. U/G STRUCTURES COMMITTEE \_\_\_\_\_ DATE \_\_\_\_\_

**NOTE:**  
LOCATION OF UNDERGROUND STRUCTURES AS SHOWN ARE BASED ON THE BEST INFORMATION AVAILABLE BUT NO GUARANTEE IS GIVEN THAT ALL EXISTING UTILITIES ARE SHOWN OR THAT THE GIVEN LOCATIONS ARE EXACT. CONFIRMATION OF EXISTENCE AND EXACT LOCATION OF ALL SERVICES MUST BE OBTAINED FROM THE INDIVIDUAL UTILITIES BEFORE PROCEEDING WITH CONSTRUCTION.

B.M. 39-25	S. side Athlone Dr. @ Prairie View Rd., Tblt. in N. Conc. foundation of Athlone School, 43.5m E. & 0.2m below brick of N.W. Cor. of school.
ELEV. 240.636	

**KGS GROUP CONSULTING ENGINEERS**

DESIGNED BY: **BJM** CHECKED BY: **CR**

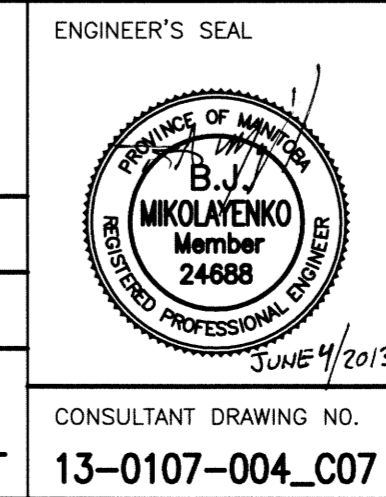
DRAWN BY: **GEL** APPROVED BY: \_\_\_\_\_

HOR. SCALE: 1:250  
VERTICAL: ---

RELEASED FOR CONSTRUCTION: \_\_\_\_\_

ISSUED FOR TENDER: 13/06/04 BY: **BJM**

NO. REVISIONS: \_\_\_\_\_ DATE: \_\_\_\_\_ BY: \_\_\_\_\_



**THE CITY OF WINNIPEG PUBLIC WORKS DEPARTMENT TRANSPORTATION ENGINEERING DIVISION**

PROJECT TITLE: **2013 LOCAL STREET REHABILITATION PROGRAM**

RED ROBIN PLACE  
ATHLONE DR S TO ATHLONE DR N  
STA 2+00 TO ATHLONE DR N

SHEET **07** OF **16**

COMPUTER FILE NAME: **13-0107-004\_CALL**

DRAWING NUMBER: **C07**

CONSULTANT DRAWING NO. **13-0107-004\_C07**

P:\Projects\2013\13-0107-004\DocControl\Tobiasued\DWG\13-0107-004\_C07-Rev0.dwg - Tab: C07 Plotted By: DDerocete 06/04/2013 [Tue 11:11am]  
 PLOT 1:1 A-1