

TYPICAL SECTION

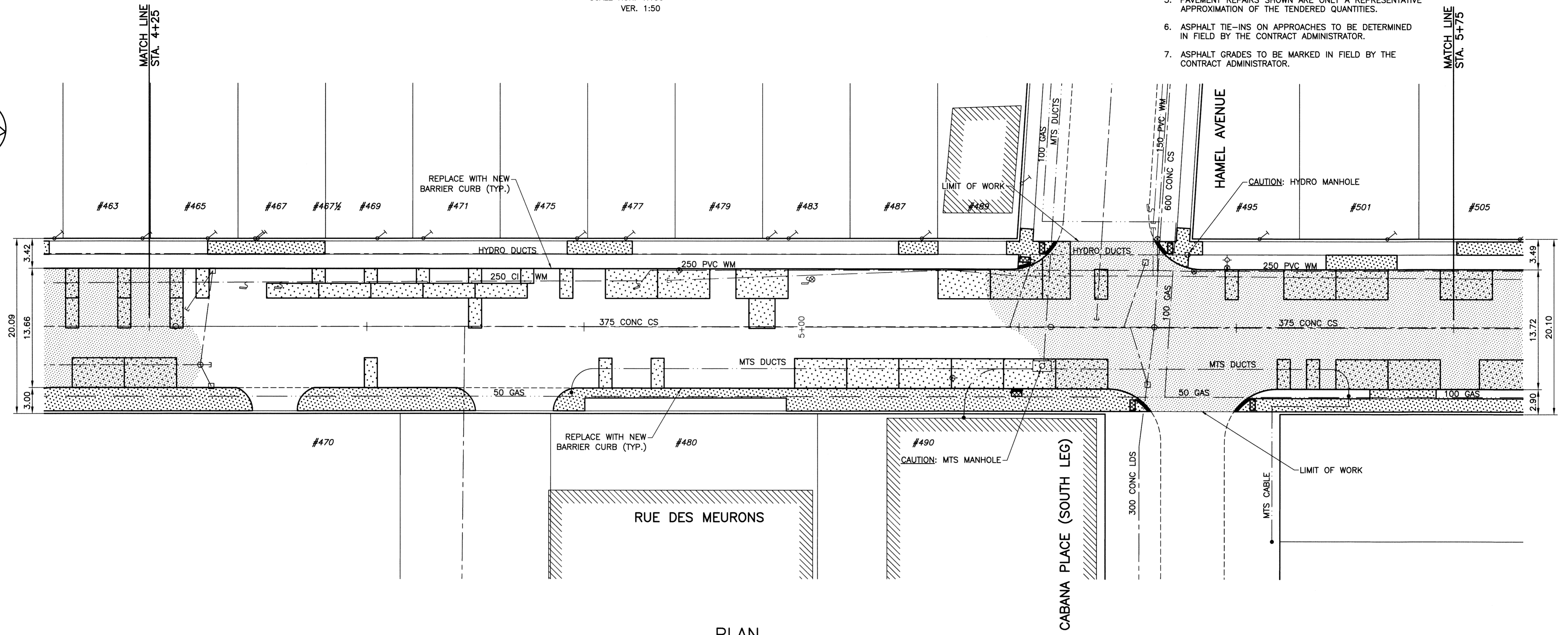
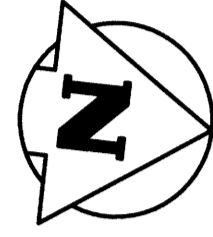
SCALE HOR. 1:150
VER. 1:50

CONSTRUCTION SCOPE OF WORK

- PLANING EXISTING ASPHALT SURFACE
- FULL BARRIER CURB RENEWAL
- CONCRETE PAVEMENT RENEWALS (SLAB, JOINT, ISOLATIONS)
- SIDEWALK RENEWAL
- BUS STOP SIDEWALK IMPROVEMENTS
- PLACEMENT OF ASPHALT OVERLAY

NOTES:

1. PAVEMENT DIMENSIONS ARE TO BACK OF CURB.
2. PROPERTY LINES OBTAINED FROM CITY OF WINNIPEG. NO SCALE FACTOR WAS APPLIED.
3. ALL SIDEWALK, CURB, AND CONCRETE REPAIRS TO BE MARKED OUT IN FIELD BY CONTRACT ADMINISTRATOR.
4. ALL ADJUSTMENTS FOR CATCHBASINS, MANHOLES, VALVES & INLETS TO BE MARKED IN FIELD BY CONTRACT ADMINISTRATOR.
5. PAVEMENT REPAIRS SHOWN ARE ONLY A REPRESENTATIVE APPROXIMATION OF THE TENDERED QUANTITIES.
6. ASPHALT TIE-INS ON APPROACHES TO BE DETERMINED IN FIELD BY THE CONTRACT ADMINISTRATOR.
7. ASPHALT GRADES TO BE MARKED IN FIELD BY THE CONTRACT ADMINISTRATOR.



PLAN

SCALE: 1:250

WARNING

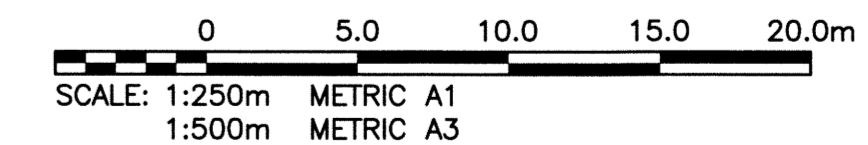
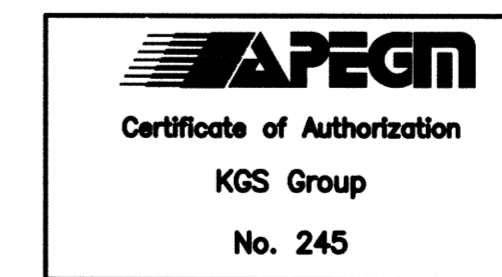
NOTIFY THE GAS COMPANY OF THE PROPOSED LOCATION OF EXCAVATION. TAKE PRECAUTION TO AVOID DAMAGE TO GAS COMPANY INSTALLATIONS. SEE PROVINCIAL REGULATION 210/72 FOR DETAILS.

METRIC

WHOLE NUMBERS INDICATE MILLIMETRES
DECIMALIZED NUMBERS INDICATE METRES

PROPERTY LIMITS DELINEATION

DELINEATION OF PROPERTY LIMITS AS SHOWN ON THIS DWG DOES NOT REPRESENT A "LEGAL SURVEY". KGS GROUP MAKES NO REPRESENTATION OR WARRANTY AS TO THE ACCURACY OF PROPERTY LIMITS DELINEATED ON THIS DWG, NOR ON THE DIMENSIONAL ACCURACY OF DWG FEATURES RELATIVE TO THOSE PROPERTY LIMITS.



EXISTING	LEGEND-PLAN	PROPOSED	EXISTING	LEGEND-PLAN	PROPOSED	EXISTING	LEGEND-PROFILE	PROPOSED
300 LDS	LAND DRAINAGE SEWER	300 LDS	☒	DETECTABLE WARNING TILE	☒			
250 WWS	WASTE WATER SEWER	250 WWS	⊕	TEST HOLE				
	GAS		—	GUY WIRE				
	HYDRO		—	LIGHT STANDARD				
	M.T.S.		—	BACK OF CURB				
150 WM	WATERMAIN	150 WM	—	CONCRETE				
⊕	HYDRANT	⊕	—	ASPHALT				
⊕	VALVE	⊕	—	SIDEWALK				
⊕	MANHOLE	⊕	—	PROPERTY LINE				
⊕	CATCH BASIN	⊕	—	SURVEY BAR				
▽	CURB INLET	▽	—	GEODETIC BENCHMARK				
•	POLES	•	231.334	ELEVATION	(32.231)	TTTTT		

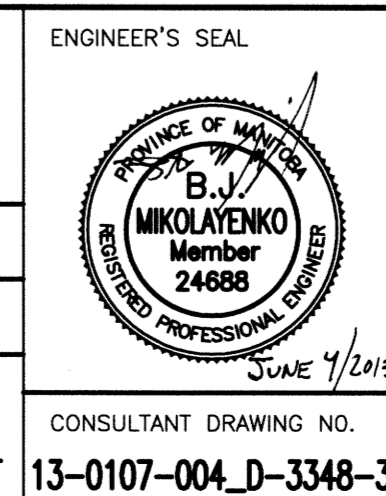
LOCATION APPROVED UNDERGROUND STRUCTURES

SUPV. U/G STRUCTURES COMMITTEE DATE

NOTE:
LOCATION OF UNDERGROUND STRUCTURES AS SHOWN ARE BASED ON THE BEST INFORMATION AVAILABLE BUT NO GUARANTEE IS GIVEN THAT ALL EXISTING UTILITIES ARE SHOWN OR THAT THE GIVEN LOCATIONS ARE EXACT. CONFIRMATION OF EXISTENCE AND EXACT LOCATION OF ALL SERVICES MUST BE OBTAINED FROM THE INDIVIDUAL UTILITIES BEFORE PROCEEDING WITH CONSTRUCTION.

B.M.	34-11	S.E. Cor. of Rue Des Meurons & Hamel Ave. T&E. in W. Conc. wall of International Laboratories No. 490 Rue Des Meurons, 0.5m S. & 1.0m below brick of N.W. Cor. of Bldg.
ELEV.	231.413	
NO.	REVISIONS	DATE
0	ISSUED FOR TENDER	13/06/04
		BY
		DATE

DESIGNED BY	BJM	CHECKED BY	CR
DRAWN BY	GEL	APPROVED BY	
HOR. SCALE:	1:250	RELEASED FOR CONSTRUCTION:	
VERTICAL:	—	DATE	13/05/13



THE CITY OF WINNIPEG
PUBLIC WORKS DEPARTMENT
TRANSPORTATION ENGINEERING DIVISION

PROJECT TITLE: 2013 LOCAL STREET REHABILITATION PROGRAM
SHEET OF 14 OF 16

RUE DES MEURONS
BERTRAND ST TO DE LA CATHEDRALE
STA 4+25 TO STA 5+75

COMPUTER FILE NAME: 13-0107-004_CALL
CITY DRAWING NUMBER: D-3348-3

P:\Projects\2013\13-0107-004\DocControl\Released\DWG\13-0107-004_D-3348-3-Rev0.dwg - Tab: D-3348-3 Plotted By: DDenoeche 06/04/2013 [Tue 1:32pm]
PLOT: 1:1 A-1