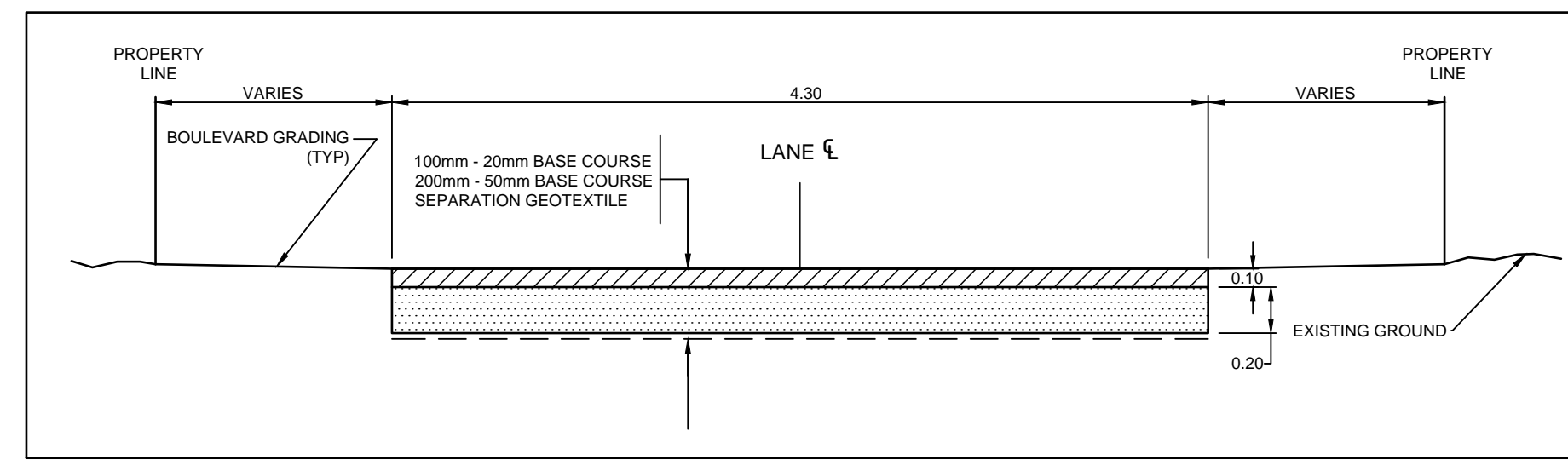
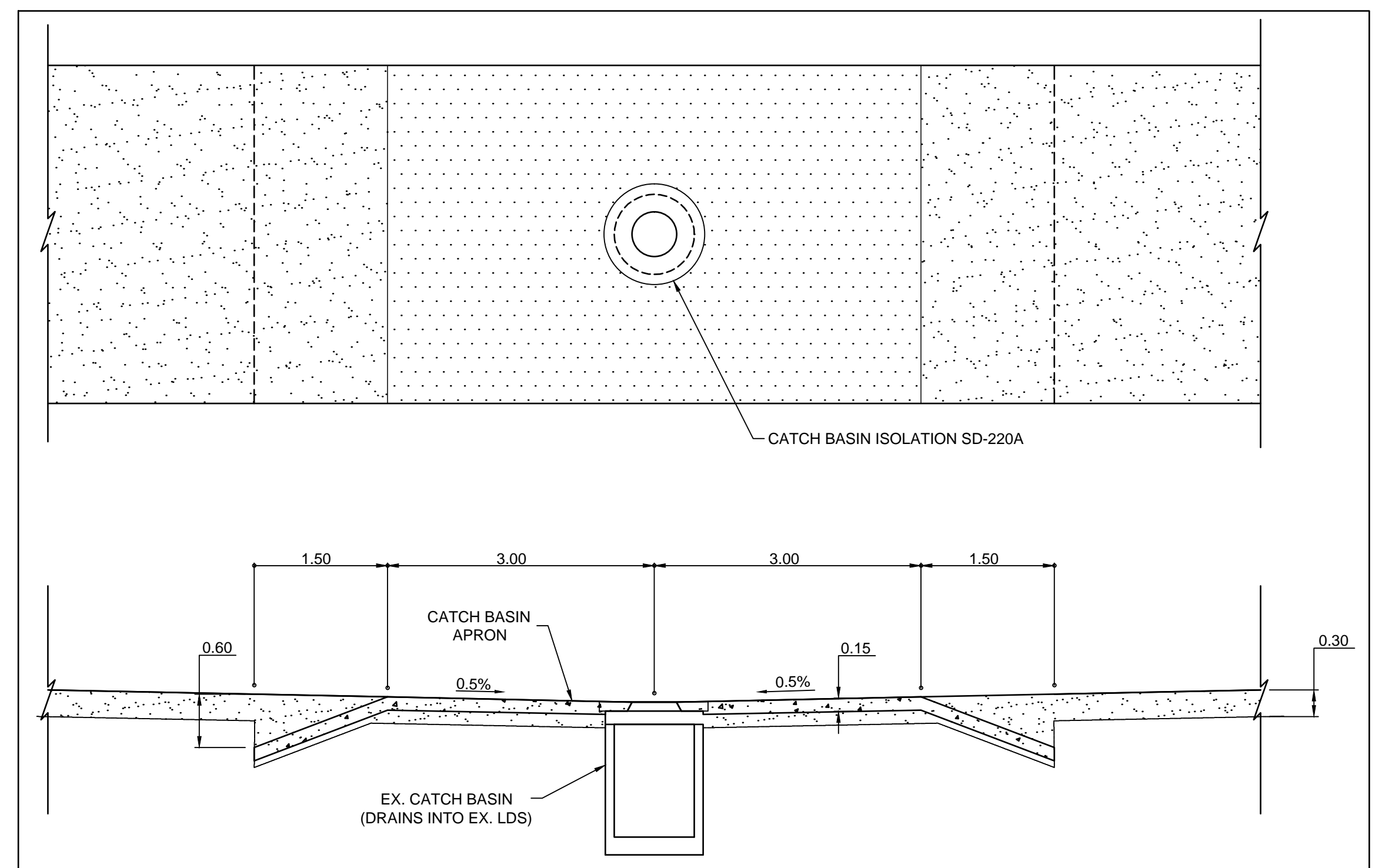


TYPICAL 4.30m LANE CROSS SECTION W / ENVIROGRID
N.T.S



TYPICAL 4.30m LANE CROSS SECTION
N.T.S



CATCH BASIN APRON DETAIL
N.T.S

"Description of property limits, and existing and/or proposed features relative to these limits as shown on this drawing do not represent a Legal Survey. GENIVAR makes no representation or guarantee that the property limit information is accurate. GENIVAR accepts no responsibility for damages, if any, suffered by any third party as a result of decisions made or actions based on this drawing."



EXISTING	LEGEND - PLAN	PROPOSED	EXISTING	LEGEND - PLAN	PROPOSED	EXISTING	LEGEND - PROFILE	PROPOSED
	WATERMAIN HYDRANT			M.T.S. TRAFFIC SIGNAL			WATERMAIN VALVE	
	CURB STOP			CONCRETE/ASPHALT SIDEWALK			LAND DRAINAGE SEWER C.B. LEAD	
	CATCH BASIN			CURB RAMP			GAS MANHOLE	
	HYDRO MANHOLE			PROPERTY LINE			PROPERTY LINE	
	WATERMAIN VALVE			WATERMAIN VALVE			WATERMAIN VALVE	
	LAND DRAINAGE SEWER			LAND DRAINAGE SEWER			LAND DRAINAGE SEWER	
	WATERMAIN			WATERMAIN			WATERMAIN	

LOCATION APPROVED UNDERGROUND STRUCTURES

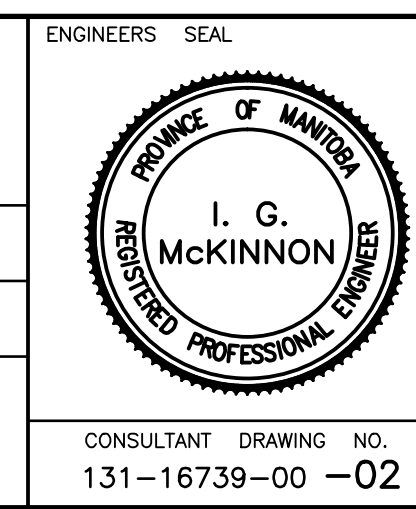
SUPV. U/G STRUCTURES DATE COMMITTEE

NOTE:
LOCATION OF UNDERGROUND STRUCTURES AS SHOWN ARE BASED ON THE BEST INFORMATION AVAILABLE BUT NO GUARANTEE IS GIVEN THAT ALL EXISTING UTILITIES ARE SHOWN OR THAT THE GIVEN LOCATIONS ARE EXACT. CONFIRMATION OF EXISTENCE AND EXACT LOCATION OF ALL SERVICES MUST BE OBTAINED FROM THE INDIVIDUAL UTILITIES BEFORE PROCEEDING WITH CONSTRUCTION.

NO.	REVISIONS	DATE	BY
2	TENDER DRAWINGS	13/05/13	R.H.
1	C.O.W. REVIEW SUBMISSION	29/04/12	R.H.

GENIVAR
10 PRAIRIE WAY WINNIPEG, MANITOBA R2J 3J8
PH: (204)-477-6650 FAX: (204)-474-2864

DESIGNED BY: R.H. CHECKED BY: S.M.
DRAWN BY: R.H. APPROVED BY: I.McK.
HOR. SCALE: 1:750
VERT. SCALE: -
DATE: APRIL 2013



THE CITY OF WINNIPEG
PUBLIC WORKS DEPARTMENT

Winnipeg

2013 GRANULAR LANE IMPROVEMENT PROGRAM - CONTRACT 2
CUNNINGTON AVE / SPRINGSIDE DR LANE
FROM KILLARNEY ST TO ST MARY'S RD
GRANULAR LANE

DRAWING NO. 444-2013-02
SHEET 2 OF 10