

METRIC

WHOLE NUMBERS INDICATE MILLIMETRES
DECIMALIZED NUMBERS INDICATE METRES

WARNING

IF POWER EQUIPMENT OR EXPLOSIVES ARE TO BE USED FOR EXCAVATION ON THIS PROJECT THE CONTRACTOR MUST:

1. NOTIFY THE GAS COMPANY OF THE PROPOSED LOCATION OF EXCAVATION.
2. TAKE PRECAUTION TO AVOID DAMAGE TO GAS COMPANY INSTALLATIONS SEE PROVINCIAL REGULATION 210/72 FOR DETAILS.
3. OBTAIN EXCAVATION PERMITS PRIOR TO CONSTRUCTION.
4. A MINIMUM VERTICAL SEPARATION OF 300 mm FROM GAS MAINS AND 100 mm FROM GAS SERVICE MUST BE MAINTAINED BETWEEN ANY MANITOBA HYDRO FACILITY AND ANY NEW INSTALLATIONS.
5. A MINIMUM 900 mm OF COVER SHALL BE MAINTAINED IN ALL AREAS WHERE EQUIPMENT WILL BE CROSSING, TRAVELING OR COMPACTING OVER THE HIGH PRESSURE GAS MAINS.
6. IF EQUIPMENT MUST CROSS, TRAVEL, OR COMPACT OVER THE GAS MAIN WITH LESS THAN THE MINIMUM DEPTH COVER, EARTH BRIDGING OR STEEL PLATES SHALL BE PLACED OVER THE MAIN AND EXTEND A MINIMUM OF 1.0 METRE ON EITHER SIDE AT EACH CROSSING LOCATION.

G:\CAD\126606\Contract\Contract_2\CrossSections.dwg

150 WM	WATERMAIN	150 WM	MTS	M.T.S.	150 mm W.M.	WATERMAIN	150 mm W.M.
⊕	HYDRANT VALVE	⊕		CONCRETE	+	HYDRANT VALVE	+
⊗	LAND DRAINAGE SEWER	⊗		ASPHALT	⊕	LAND DRAINAGE SEWER	⊕
300 LDS	300 LDS	300 LDS		PLANING	300 mm L.D.S.	300 mm L.D.S.	300 mm L.D.S.
250 WWS	250 WWS	250 WWS		SIDEWALK	250 mm W.W.S.	250 mm W.W.S.	250 mm W.W.S.
○	MANHOLE	●		PAVING STONES	⊕	MANHOLE	●
⊙	CATCH BASIN	⊙		PROPERTY LINE	⊕	NORTH/WEST GUTTER	⊕
⊕	TEST HOLES	⊕		SURVEY BAR	⊕	SOUTH/EAST GUTTER	⊕
⊕	JUNCTIONS	⊕		CURB RAMP	⊕	NORTH/WEST T/LANE	⊕
⊕	CULVERT	⊕		DITCH	⊕	SOUTH/EAST T/LANE	⊕
100 GAS	GAS	100 GAS		SWALE	⊕		
EXISTING	LEGEND-PLAN	PROPOSED	EXISTING	LEGEND-PLAN	PROPOSED	EXISTING	LEGEND-PROFILE

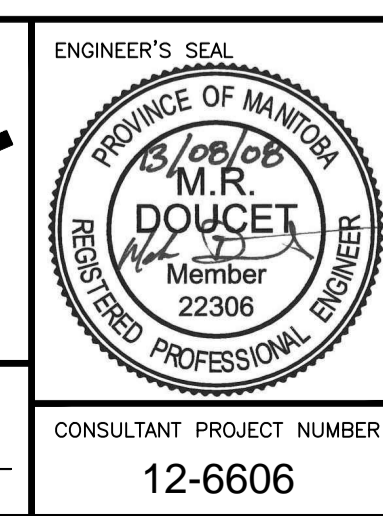
UNDERGROUND STRUCTURES

SUPV. U/G STRUCTURES COMMITTEE DATE

NOTE:
LOCATION OF UNDERGROUND STRUCTURES AS SHOWN ARE BASED ON THE BEST INFORMATION AVAILABLE BUT NO GUARANTEE IS GIVEN THAT ALL EXISTING UTILITIES ARE SHOWN OR THAT THE GIVEN LOCATIONS ARE EXACT. CONFIRMATION OF EXISTENCE AND EXACT LOCATION OF ALL SERVICES MUST BE OBTAINED FROM THE INDIVIDUAL UTILITIES BEFORE PROCEEDING WITH CONSTRUCTION.

B.M. 654008	N: 5515764.610	654210	N: 5514436.957
E: 232.463 m	E: 633359.697	E: 630550.534	E: 630550.534
ELEV. 232.463 m		ELEV. 232.463 m	

DESIGNED BY	MRD
DRAWN BY	PMW
CHECKED BY	DBW
APPROVED BY	DPK
HOR. SCALE	AS SHOWN
VERTICAL	AS SHOWN
ISSUED FOR TENDER	13/08/08 MRD
NO. REVISIONS	DATE BY



THE CITY OF WINNIPEG PUBLIC WORKS DEPARTMENT

WAVERLEY WEST ARTERIAL ROADS PROJECT (WWARP) PART 3 - CONTRACT 2 ROUTE 90 TO ROUTE 165 OVERPASS (KENASTON BLVD.) AND ASSOCIATED WORKS

CITY DRAWING NUMBER: B242-13- 103
SHEET OF: 103 OF 128
CONSULTANT DRAWING NUMBER: P-3349- 103

CROSS SECTIONS 4 OF 5