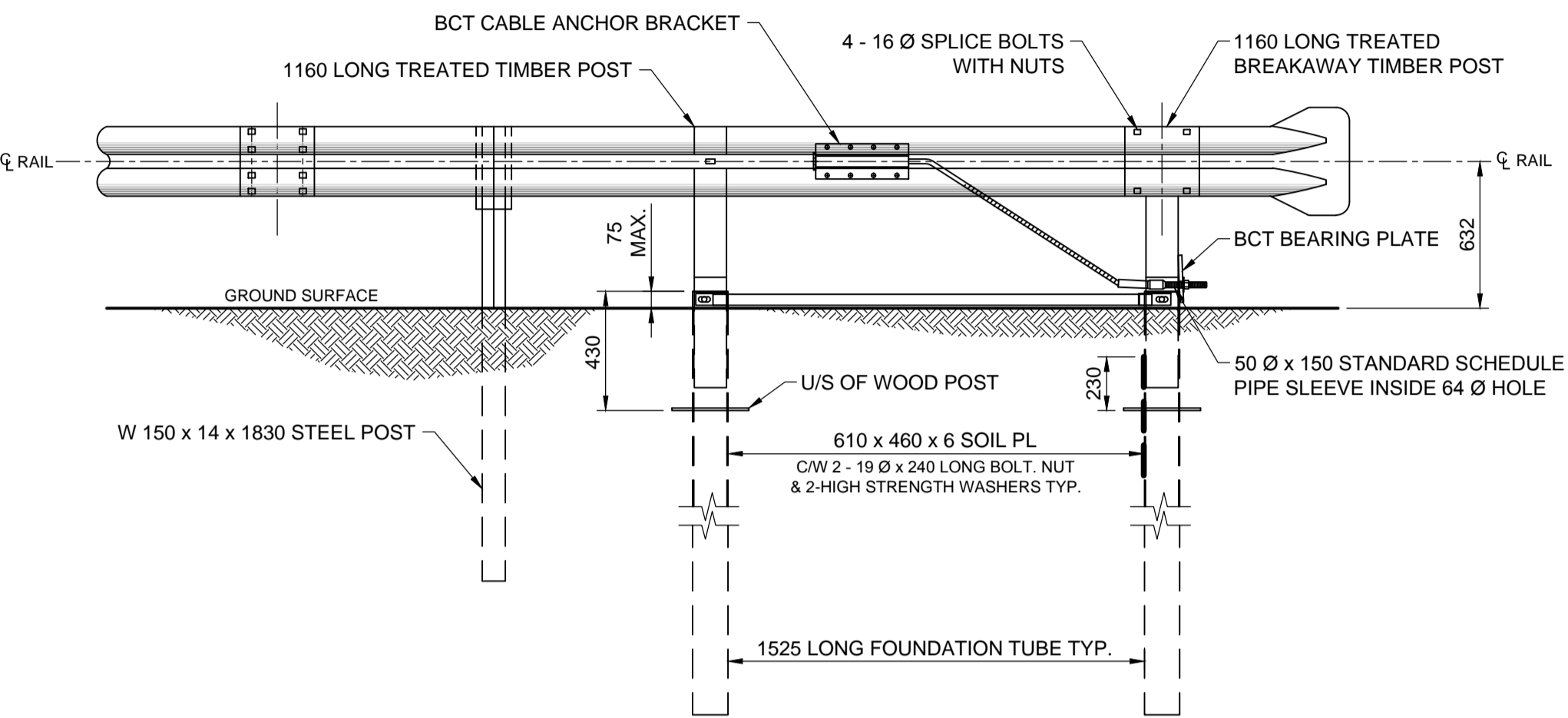
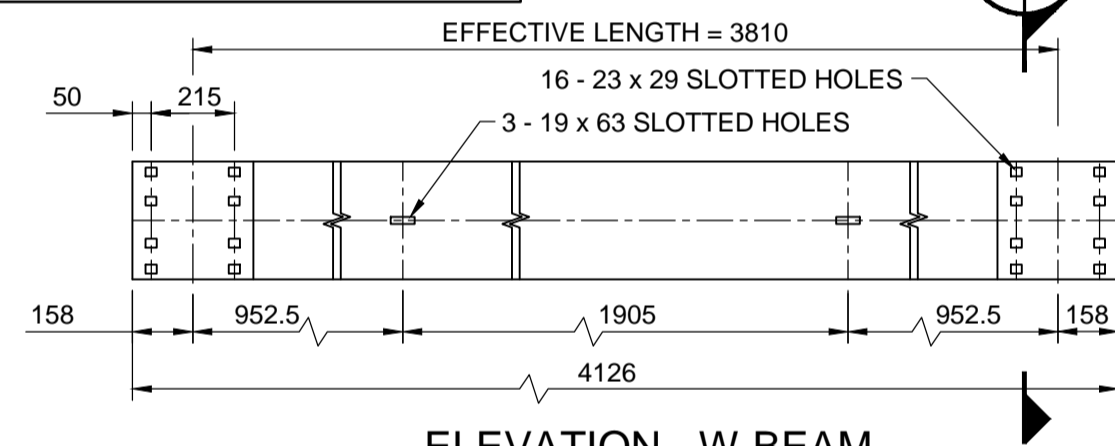


PLAN  
NTS

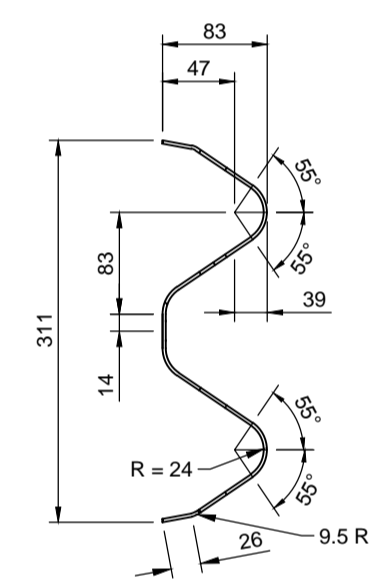


CABLE ANCHOR TERMINAL ELEVATION  
NTS

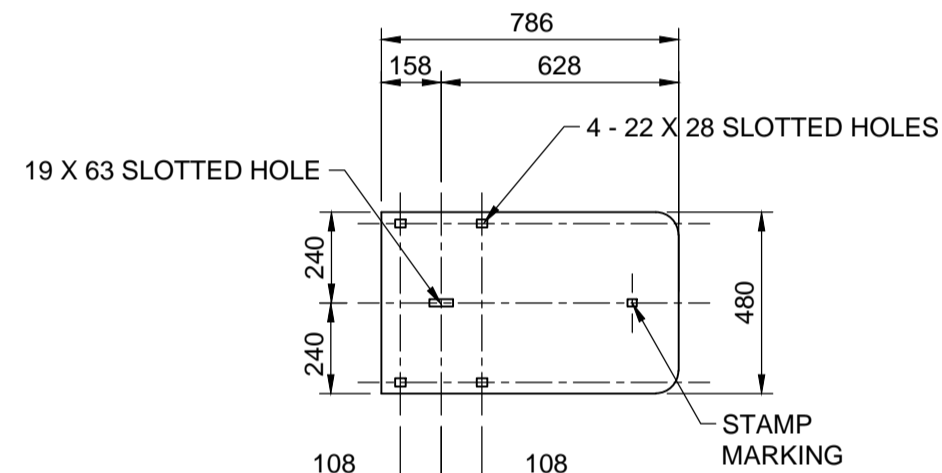
A FINISHED THICKNESS OF RAIL TO BE 2.82 mm NOMINAL STEEL AND HOT DIPPED GALVANIZED AFTER FABRICATION



ELEVATION - W-BEAM  
NTS



SECTION A  
NTS

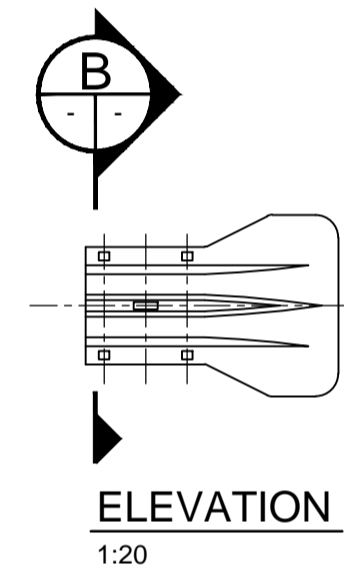


BLANK LAYOUT  
1:20

THICKNESS OF STEEL = 2.82mm AFTER GALVANIZED

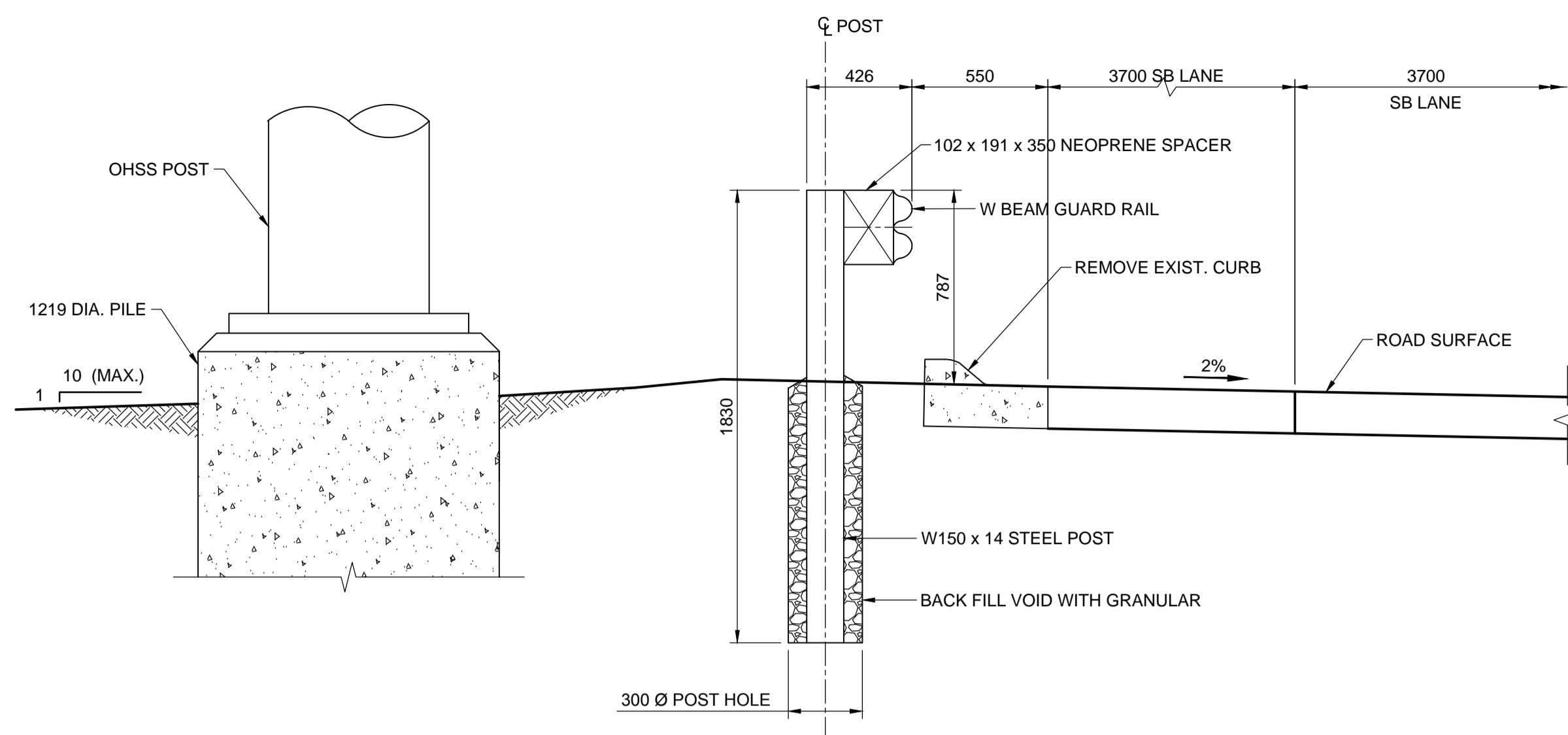
W-BEAM GUARDRAIL END SECTION  
1:20

PLAN  
1:20

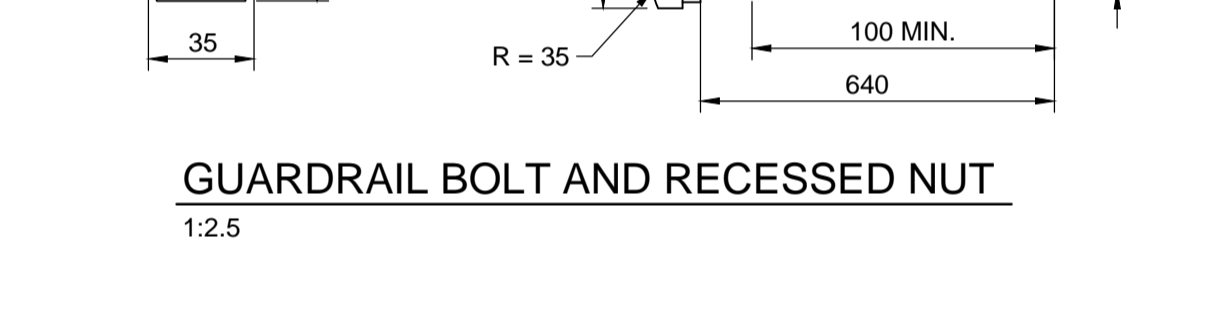
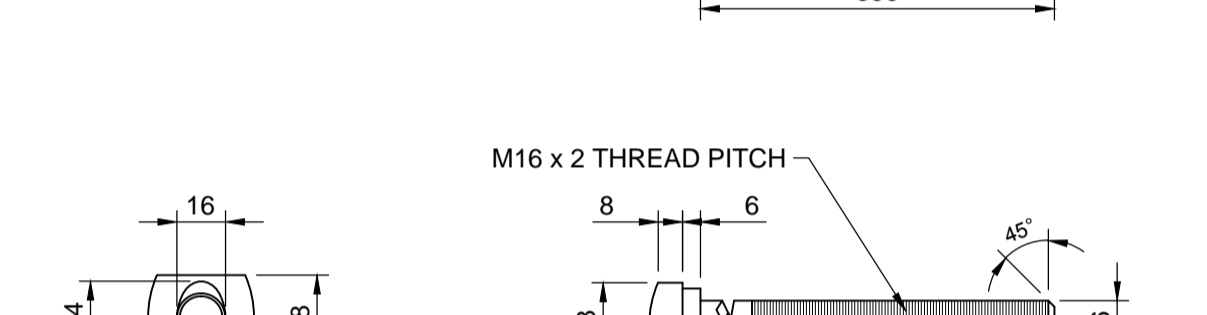
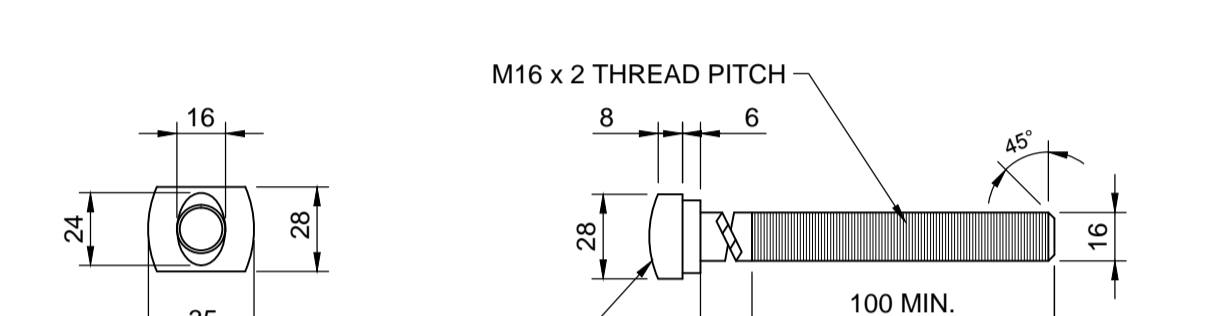
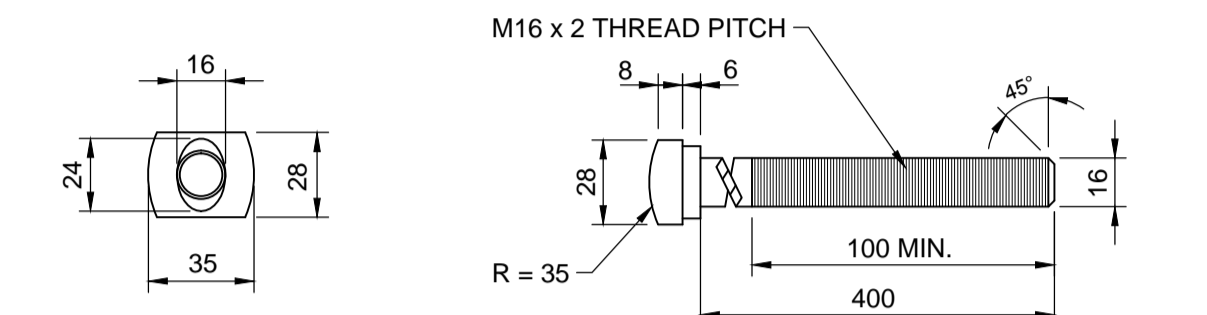
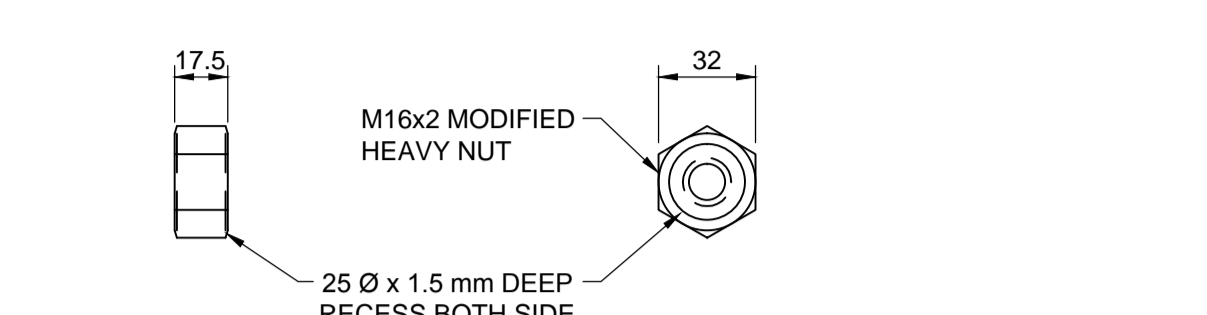
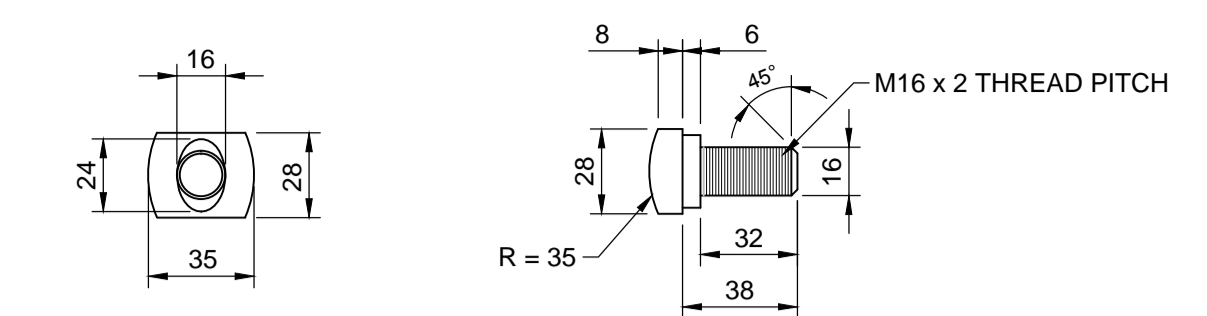


ELEVATION  
1:20

SECTION B  
N.T.S.



GUARDRAIL SECTION  
1:20



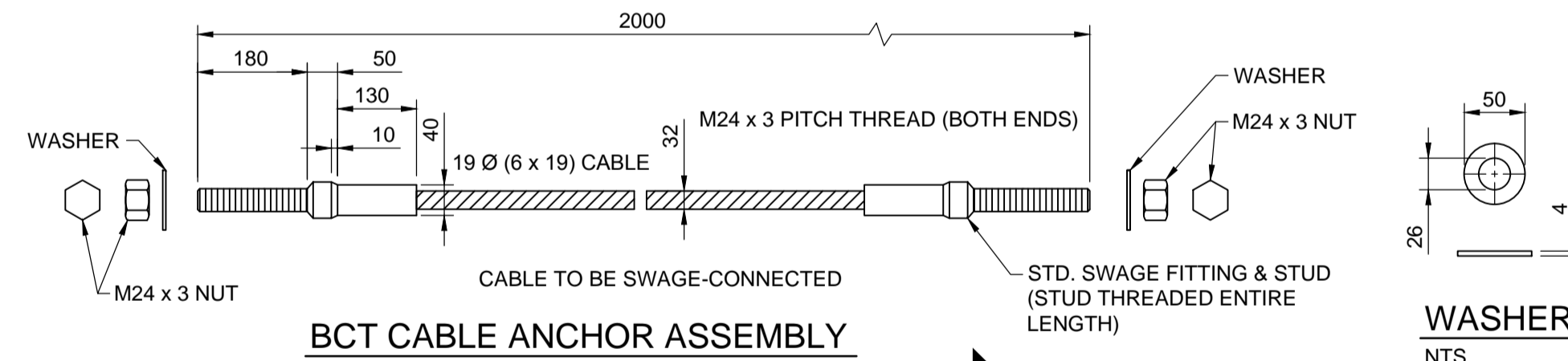
GUARDRAIL BOLT AND RECESSED NUT  
1:2.5

METRIC

WHOLE NUMBERS INDICATE MILLIMETRES  
DECIMALIZED NUMBERS INDICATE METRES

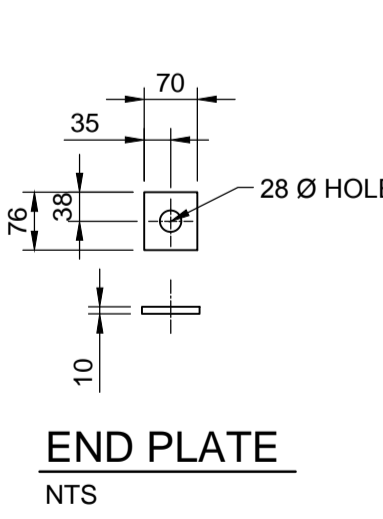
WARNING

- IF POWER EQUIPMENT OR EXPLOSIVES ARE TO BE USED FOR EXCAVATION ON THIS PROJECT THE CONTRACTOR MUST:
- NOTIFY THE GAS COMPANY OF THE PROPOSED LOCATION OF EXCAVATION.
  - TAKE PRECAUTION TO AVOID DAMAGE TO GAS COMPANY INSTALLATIONS SEE PROVINCIAL REGULATION 210/72 FOR DETAILS.
  - OBTAIN EXCAVATION PERMITS PRIOR TO CONSTRUCTION.
  - A MINIMUM VERTICAL SEPARATION OF 300 mm FROM GAS MAINS AND 100 mm FROM GAS SERVICE MUST BE MAINTAINED BETWEEN ANY MANITOBA HYDRO FACILITY AND ANY NEW INSTALLATIONS.
  - A MINIMUM 900 mm OF COVER SHALL BE MAINTAINED IN ALL AREAS WHERE EQUIPMENT WILL BE CROSSING, TRAVELING OR COMPACTING OVER THE HIGH PRESSURE GAS MAINS.
  - IF EQUIPMENT MUST CROSS, TRAVEL, OR COMPACT OVER THE GAS MAIN WITH LESS THAN THE MINIMUM DEPTH COVER, EARTH BRIDGING OR STEEL PLATES SHALL BE PLACED OVER THE MAIN AND EXTEND A MINIMUM OF 1.0 METRE ON EITHER SIDE AT EACH CROSSING LOCATION.

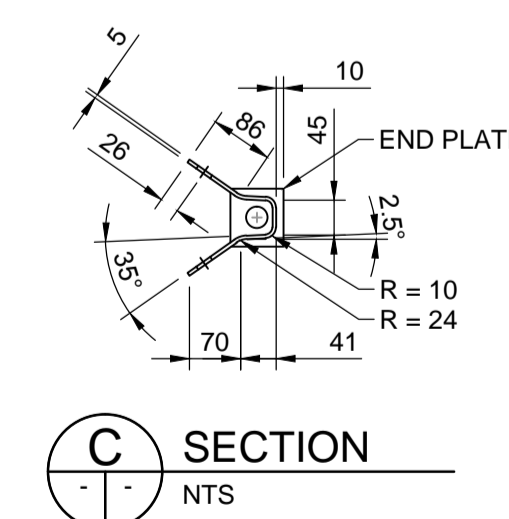


BCT CABLE ANCHOR ASSEMBLY  
NTS

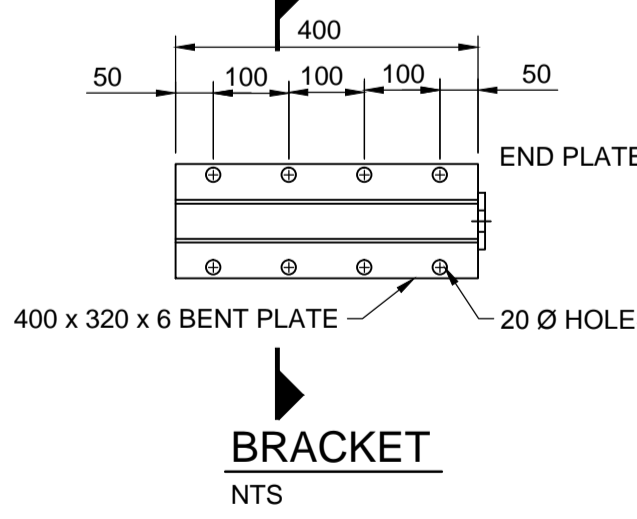
WASHER  
NTS



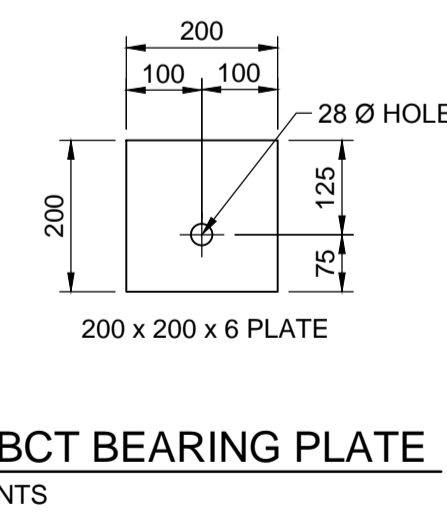
END PLATE  
NTS



SECTION C  
NTS

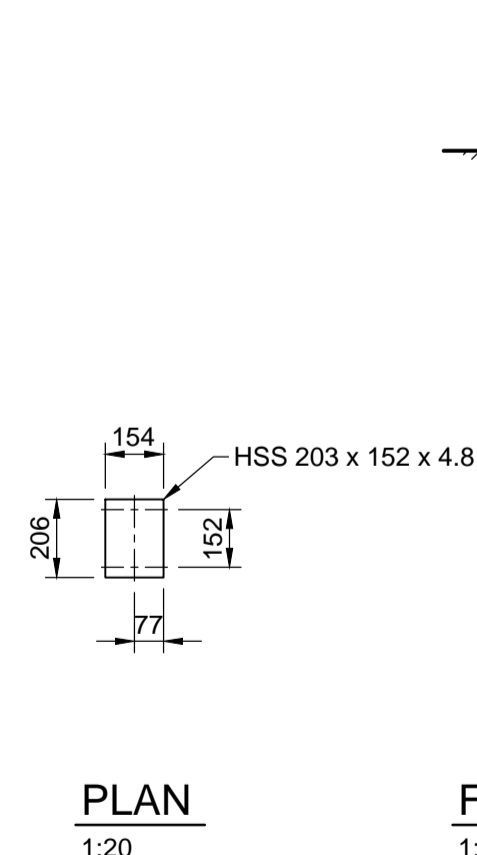


BRACKET  
NTS

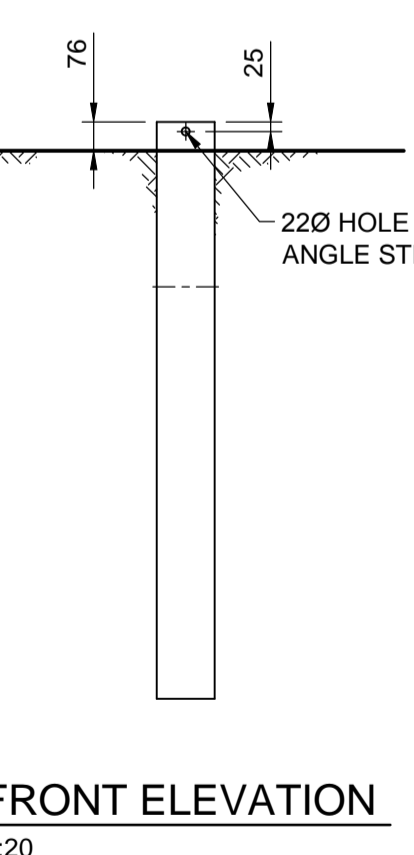


BCT BEARING PLATE  
NTS

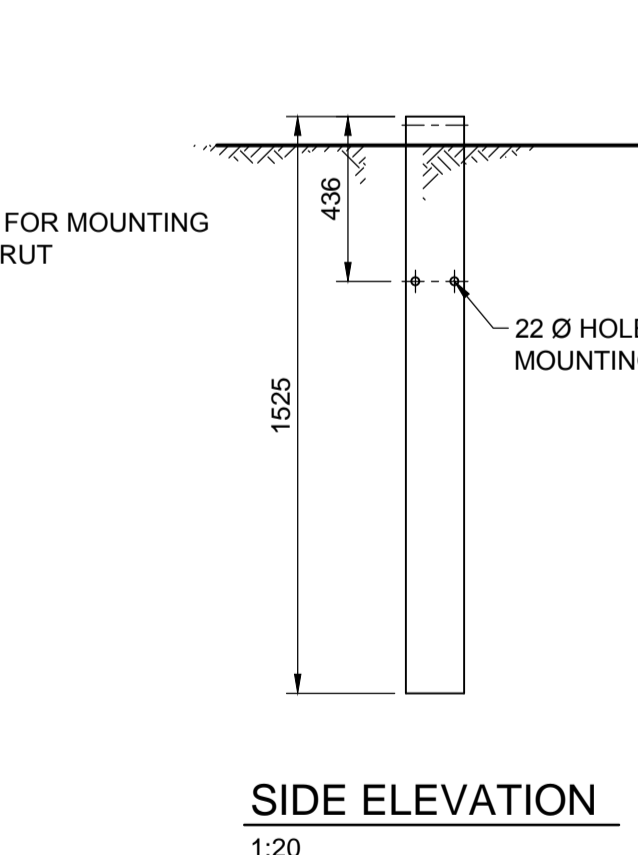
W-BEAM CABLE ANCHOR TERMINAL HARDWARE



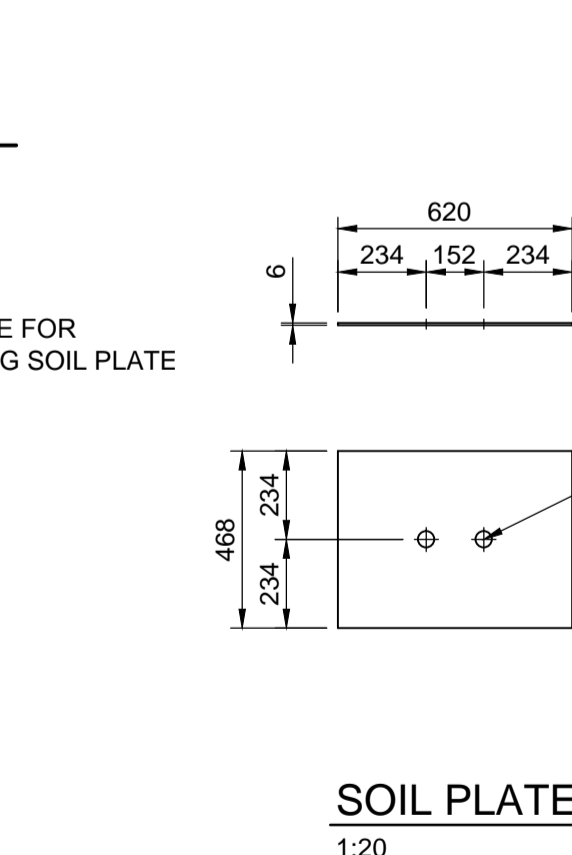
PLAN  
1:20



FRONT ELEVATION  
1:20



SIDE ELEVATION  
1:20



SOIL PLATE  
1:20

CABLE ANCHOR TERMINAL FOUNDATION TUB

C:\CAD\126606\Contract\2\Current\126606-CONTRACT\_2-OHSS-117.dwg

150 W.M.	WATERMAIN	150 W.M.	M.T.S.	M.T.S.	150 mm W.M.	WATERMAIN	150 mm W.M.
+	HYDRANT VALVE	+			+	HYDRANT VALVE	+
300 L.D.S.	LAND DRAINAGE SEWER	300 L.D.S.			300 mm L.D.S.	LAND DRAINAGE SEWER	300 mm L.D.S.
250 W.W.S.	WASTE WATER SEWER	250 W.W.S.			250 mm W.W.S.	WASTE WATER SEWER	250 mm W.W.S.
○	MANHOLE	●			○	MANHOLE	●
○	CATCH BASIN	■			○	CATCH BASIN	■
○	TEST HOLES	⊕			○	TEST HOLES	⊕
+	JUNCTIONS	+			+	JUNCTIONS	+
+	CULVERT	+			+	CULVERT	+
100 GAS	GAS	100 GAS			100 GAS	GAS	100 GAS
EXISTING	LEGEND-PLAN	PROPOSED	EXISTING	LEGEND-PLAN	PROPOSED	EXISTING	LEGEND-PROFILE

UNDERGROUND STRUCTURES

SUPV. U/G STRUCTURES COMMITTEE DATE

NOTE:  
LOCATION OF UNDERGROUND STRUCTURES AS SHOWN ARE BASED ON THE BEST INFORMATION AVAILABLE BUT NO GUARANTEE IS GIVEN THAT ALL EXISTING UTILITIES ARE SHOWN OR THAT THE GIVEN LOCATIONS ARE EXACT. CONFIRMATION OF EXISTENCE AND EXACT LOCATION OF ALL SERVICES MUST BE OBTAINED FROM THE INDIVIDUAL UTILITIES BEFORE PROCEEDING WITH CONSTRUCTION.

B.M. 654008	N: 5515764.610	654210	N: 5514436.957
ELEV. 232.463 m	E: 633359.697	ELEV. 232.463 m	E: 630550.534
DESIGNED BY	LFY	CHECKED BY	
APPROVED BY		HOR. SCALE	AS NOTED
VERTICAL	AS NOTED	RELEASED FOR CONSTRUCTION	
0	ISSUED FOR TENDER	13/08/08	MRD
NO.	REVISIONS	DATE	BY

DESIGN TEAM

DILLON CONSULTING

ENGINEER'S SEAL

N/A

CONSULTANT PROJECT NUMBER

12-6606

**THE CITY OF WINNIPEG**  
PUBLIC WORKS DEPARTMENT

Waverley West Arterial Roads Project  
(WWARP) PART 3 - CONTRACT 2  
ROUTE 90 TO ROUTE 165 OVERPASS (KENASTON BLVD.)  
AND ASSOCIATED WORKS

CITY DRAWING NUMBER  
B242-13-118

SHEET  
118 OF 128

CONSULTANT DRAWING NUMBER  
S772-2013-04