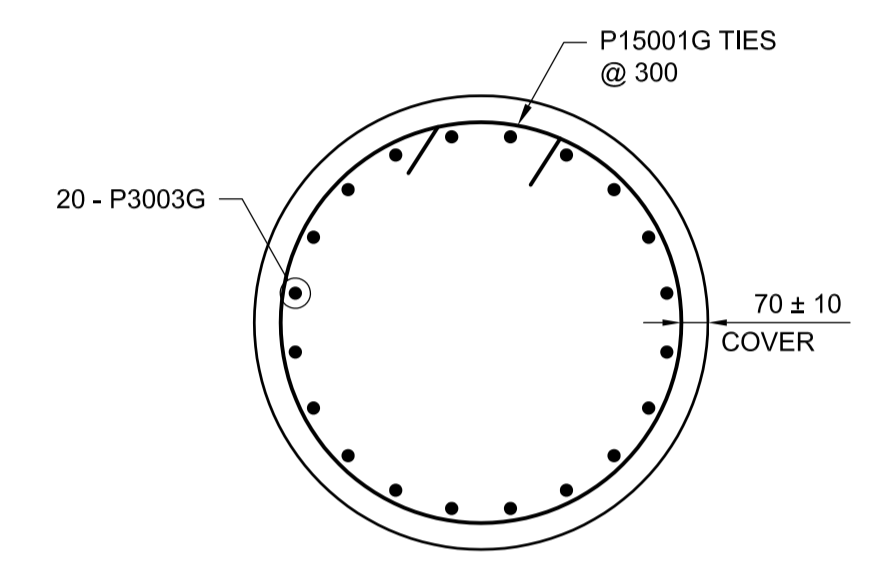
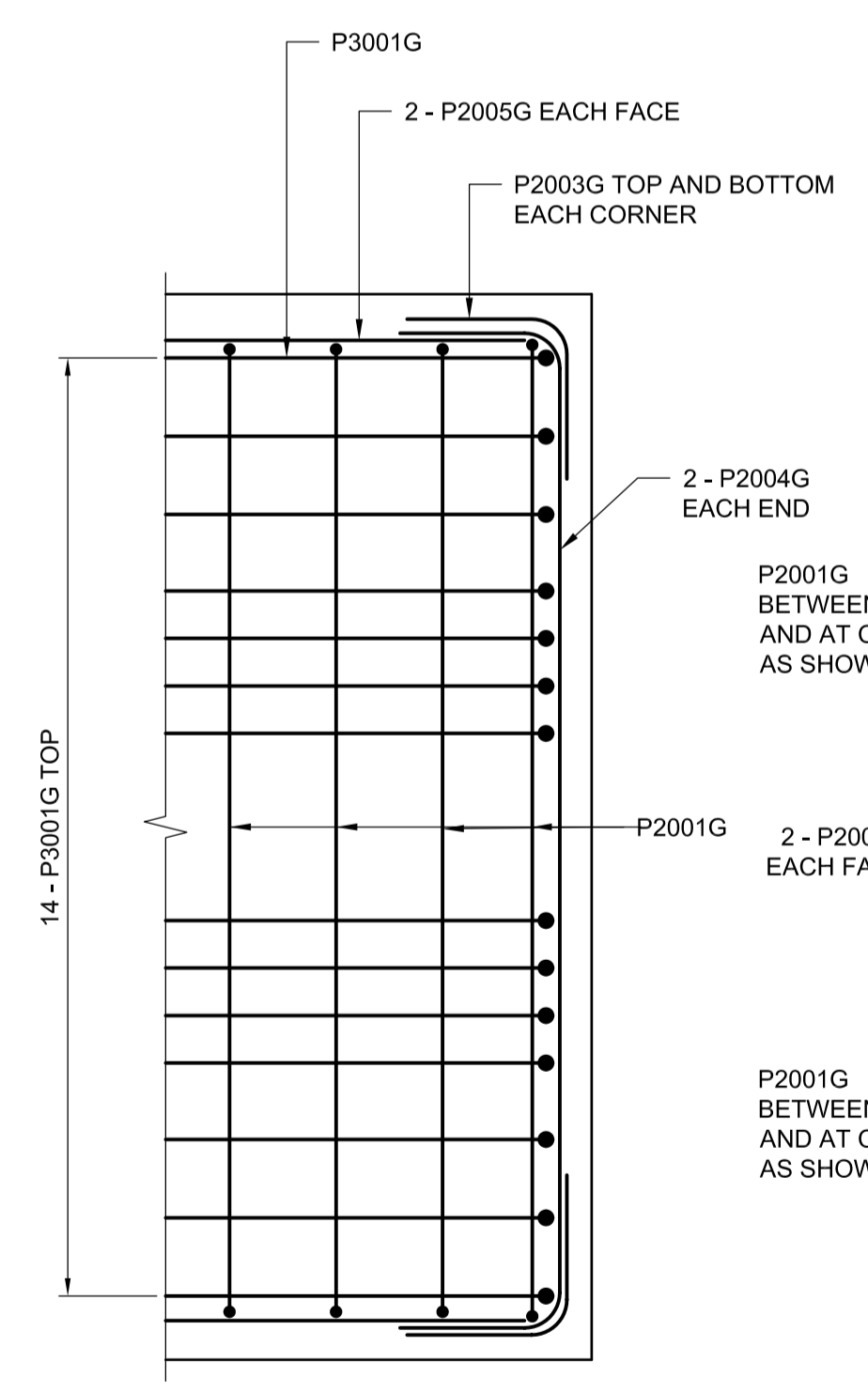


D SECTION
1:20

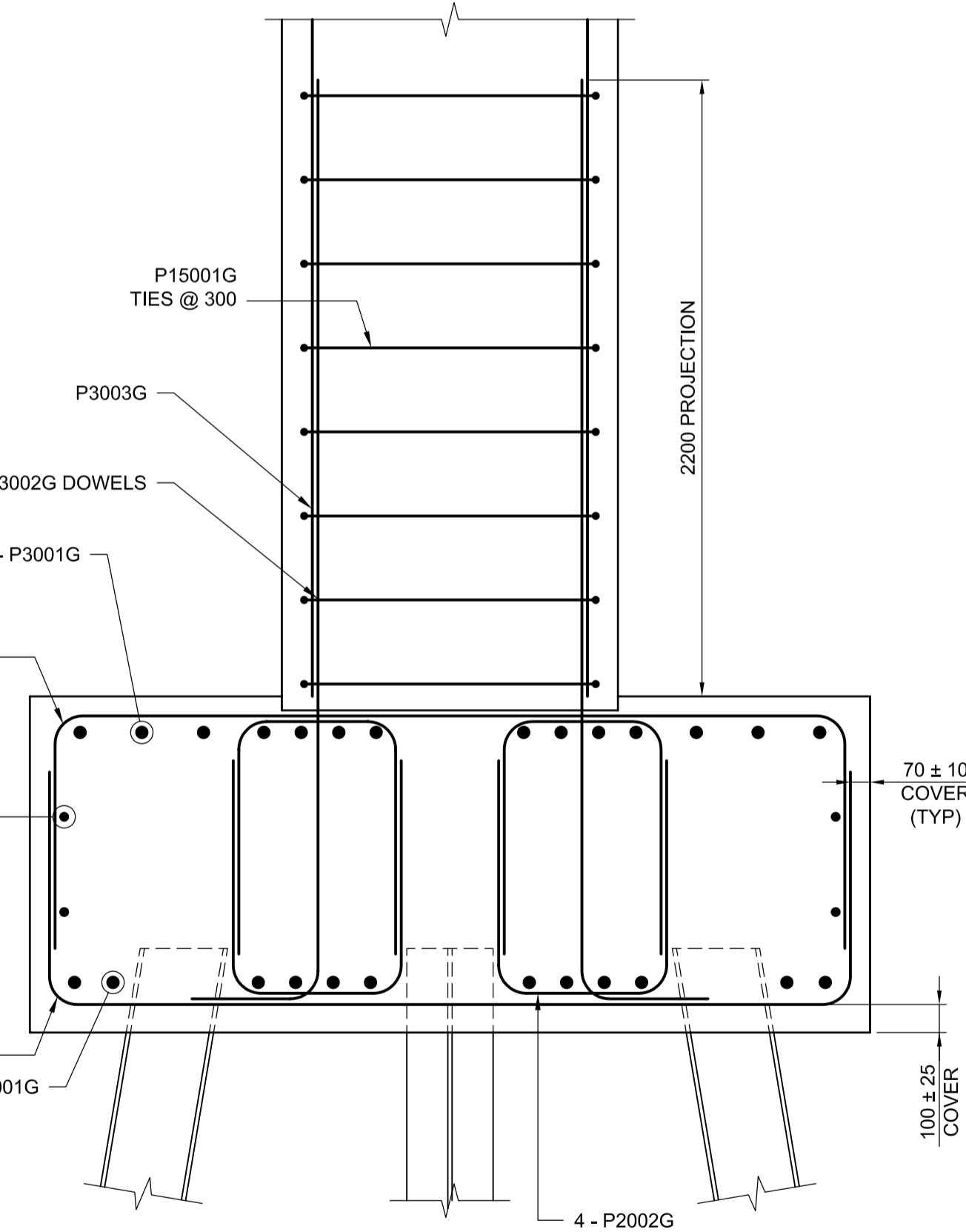


E SECTION
1:20

NOTE:
 1. ANY CONTACT AREAS BETWEEN STEEL PILES AND GALVANIZED REINFORCEMENT SHALL BE ISOLATED BY MEANS OF EITHER AN APPROVED EPOXY PAINT OR A PLASTIC/CONCRETE SEPARATOR PRIOR TO CLOSING THE FORMWORK.
 2. REINFORCEMENT SHALL BE ADJUSTED AROUND PILES TO PROVIDE A CLEAR SPACING OF 50 mm.



G END PLAN VIEW
1:20



F SECTION
1:20

B SECTION
1:20

APEGM
 Certificate of Authorization
Dillon Consulting Limited (MB)
 No. 1789 Date: 2013/08/01

UNDERGROUND STRUCTURES		B.M. ELEV.
SUPV. U/G STRUCTURES COMMITTEE	DATE	
NOTE: LOCATION OF UNDERGROUND STRUCTURES AS SHOWN ARE BASED ON THE BEST INFORMATION AVAILABLE BUT NO GUARANTEE IS GIVEN THAT ALL EXISTING UTILITIES ARE SHOWN OR THAT THE GIVEN LOCATIONS ARE EXACT. CONFIRMATION OF EXISTENCE AND EXACT LOCATION OF ALL SERVICES MUST BE OBTAINED FROM THE INDIVIDUAL UTILITIES BEFORE PROCEEDING WITH CONSTRUCTION.		
0	ISSUED FOR TENDER	13/08/08 MBL
NO.	REVISIONS	DATE BY

DESIGNED BY	KGW
DRAWN BY	RCB
CHECKED BY	RE
APPROVED BY	MBL
HOR. SCALE	AS SHOWN
VERTICAL	AS SHOWN
DATE	2013/08/01

DILLON CONSULTING
 RELEASED FOR CONSTRUCTION

ENGINEER'S SEAL
 PROVINCE OF MANITOBA
 K.G. WILLIS
 Member
 33036
 2013/08/01
 REGISTERED PROFESSIONAL ENGINEER

ENGINEER'S SEAL
 PROVINCE OF MANITOBA
 Aug 8/13
 S.S. RIHAL
 REGISTERED PROFESSIONAL ENGINEER

THE CITY OF WINNIPEG
 PUBLIC WORKS DEPARTMENT
Winnipeg
 WAVERLEY WEST ARTERIAL ROADS PROJECT (WWARP) PART 3 - CONTRACT 2
 ROUTE 90 TO ROUTE 165, OVERPASS (KENASTON BLVD.) AND ASSOCIATED WORKS
 CONSULTANT PROJECT NUMBER
 12-6606
 CITY DRAWING NUMBER
 B242-13-13
 SHEET 13 OF 128
 CONSULTANT DRAWING NUMBER

G:\CAD\126606\Contract\contract_2\Pier SU. 2_Reinforcing_Details.dwg