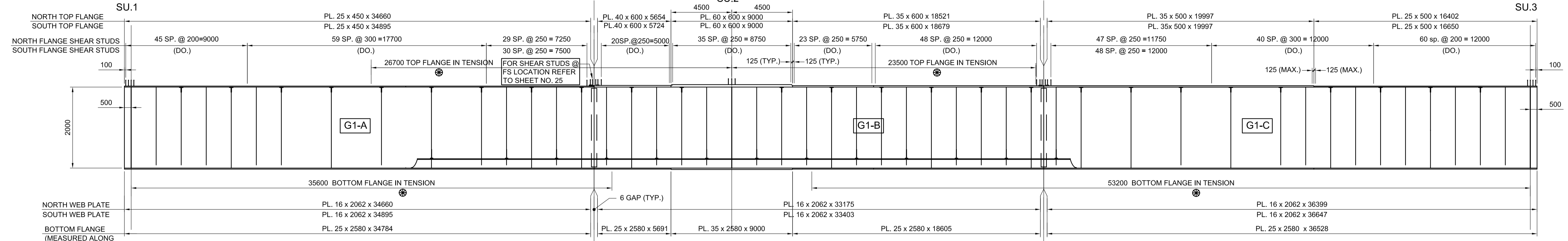
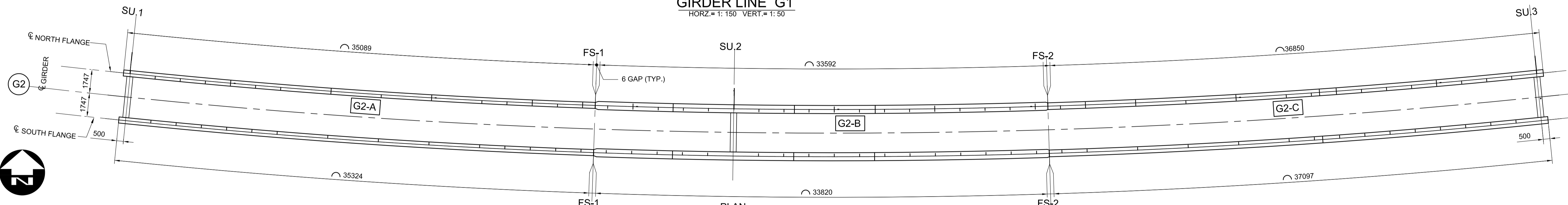


PLAN
SU.2

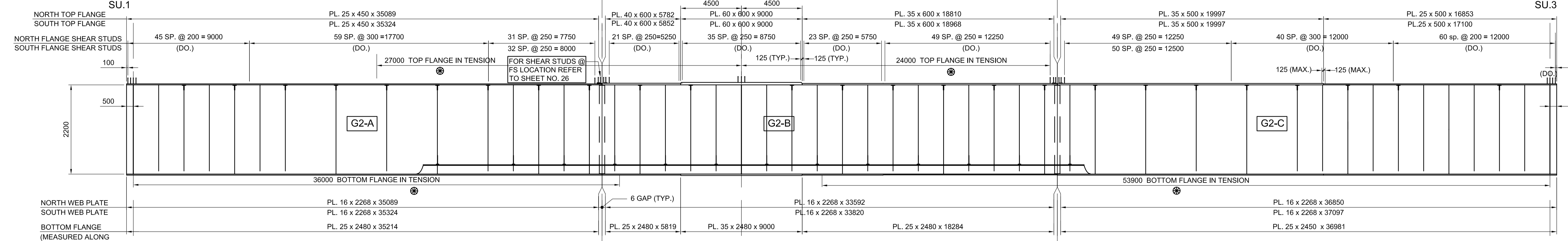


ELEVATION
GIRDER LINE G1

HORZ. = 1:150 VERT. = 1:50



PLAN
SU.2



ELEVATION
GIRDER LINE G2

HORZ. = 1:150 VERT. = 1:50

G:\CAD\126606\Contract\contract_2\Current\Struct_Steel\Girders - Top Flange and Web Plate Layout.dwg

APEGM
Certificate of Authorization
Dillon Consulting Limited (MB)
No. 1789 Date: 2013/08/01

UNDERGROUND STRUCTURES	B.M. ELEV.	DESIGNED BY	RE
SUPV. U/G STRUCTURES COMMITTEE		DRAWN BY	NBG
DATE		CHECKED BY	SSR
		APPROVED BY	MBL
		HOR. SCALE	AS SHOWN
		VERTICAL	
		RELEASED FOR CONSTRUCTION	
		DATE	2013/08/01

0	ISSUED FOR TENDER	13/08/08	MBL
NO.	REVISIONS	DATE	BY

DILLON CONSULTING

ENGINEER'S SEAL
PROVINCE OF MANITOBA
R.B. ERIC
REGISTERED PROFESSIONAL ENGINEER

ENGINEER'S SEAL
PROVINCE OF MANITOBA
S.S. RIHAL
REGISTERED PROFESSIONAL ENGINEER

THE CITY OF WINNIPEG
PUBLIC WORKS DEPARTMENT

Waverley West Arterial Roads Project (WWARP) Part 3 - Contract 2
Route 90 to Route 165, Overpass (Kenaston Blvd.) and Associated Works

STEEL GIRDERS - TOP FLANGE AND WEB PLATE LAYOUT

CITY DRAWING NUMBER: B242-13-18
SHEET 18 OF 128
CONSULTANT DRAWING NUMBER

CONSULTANT PROJECT NUMBER: 12-6606

NOTE:
LOCATION OF UNDERGROUND STRUCTURES AS SHOWN ARE BASED ON THE BEST INFORMATION AVAILABLE BUT NO GUARANTEE IS GIVEN THAT ALL EXISTING UTILITIES ARE SHOWN OR THAT THE GIVEN LOCATIONS ARE EXACT. CONFIRMATION OF EXISTENCE AND EXACT LOCATION OF ALL SERVICES MUST BE OBTAINED FROM THE INDIVIDUAL UTILITIES BEFORE PROCEEDING WITH CONSTRUCTION.