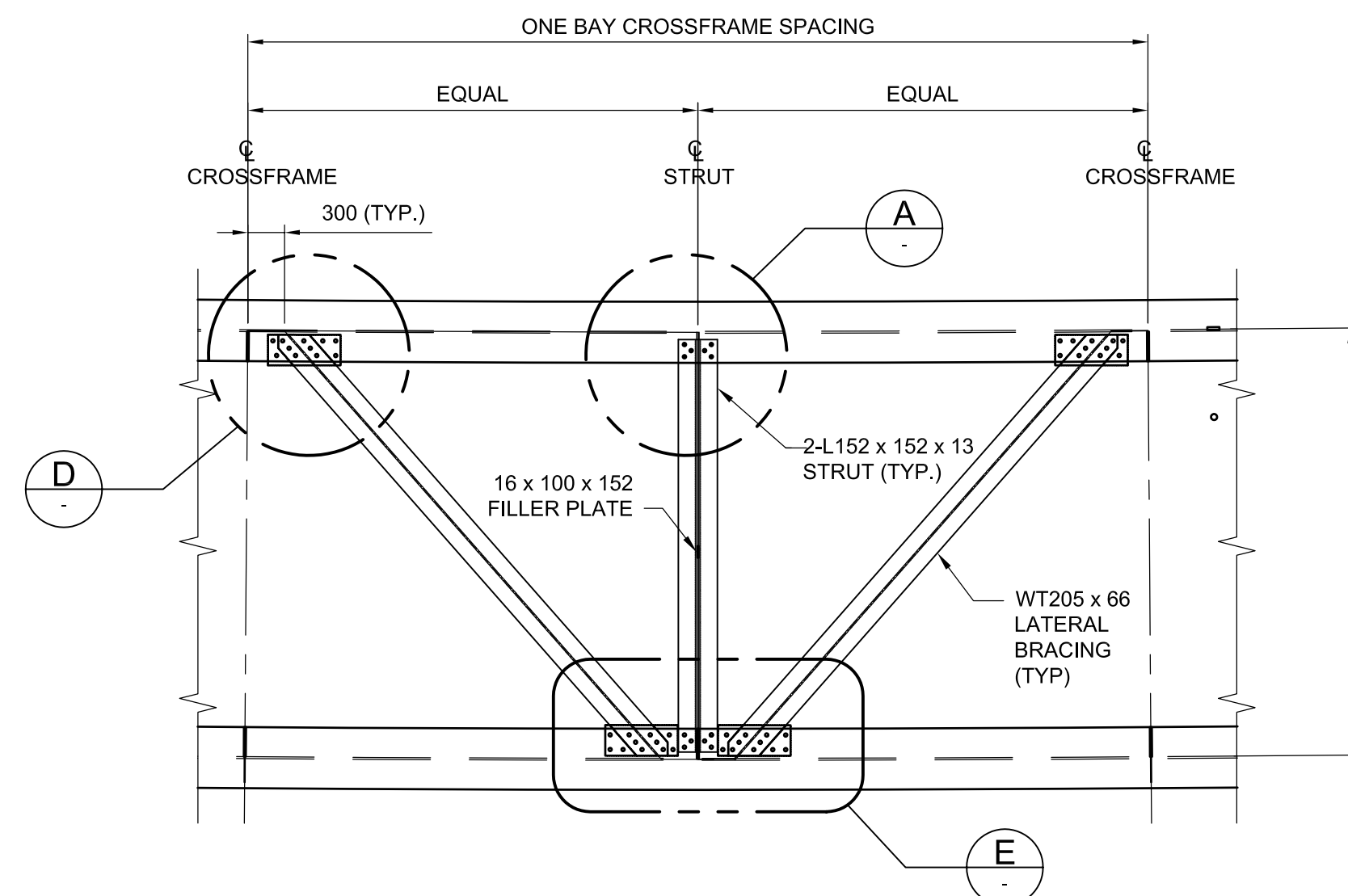
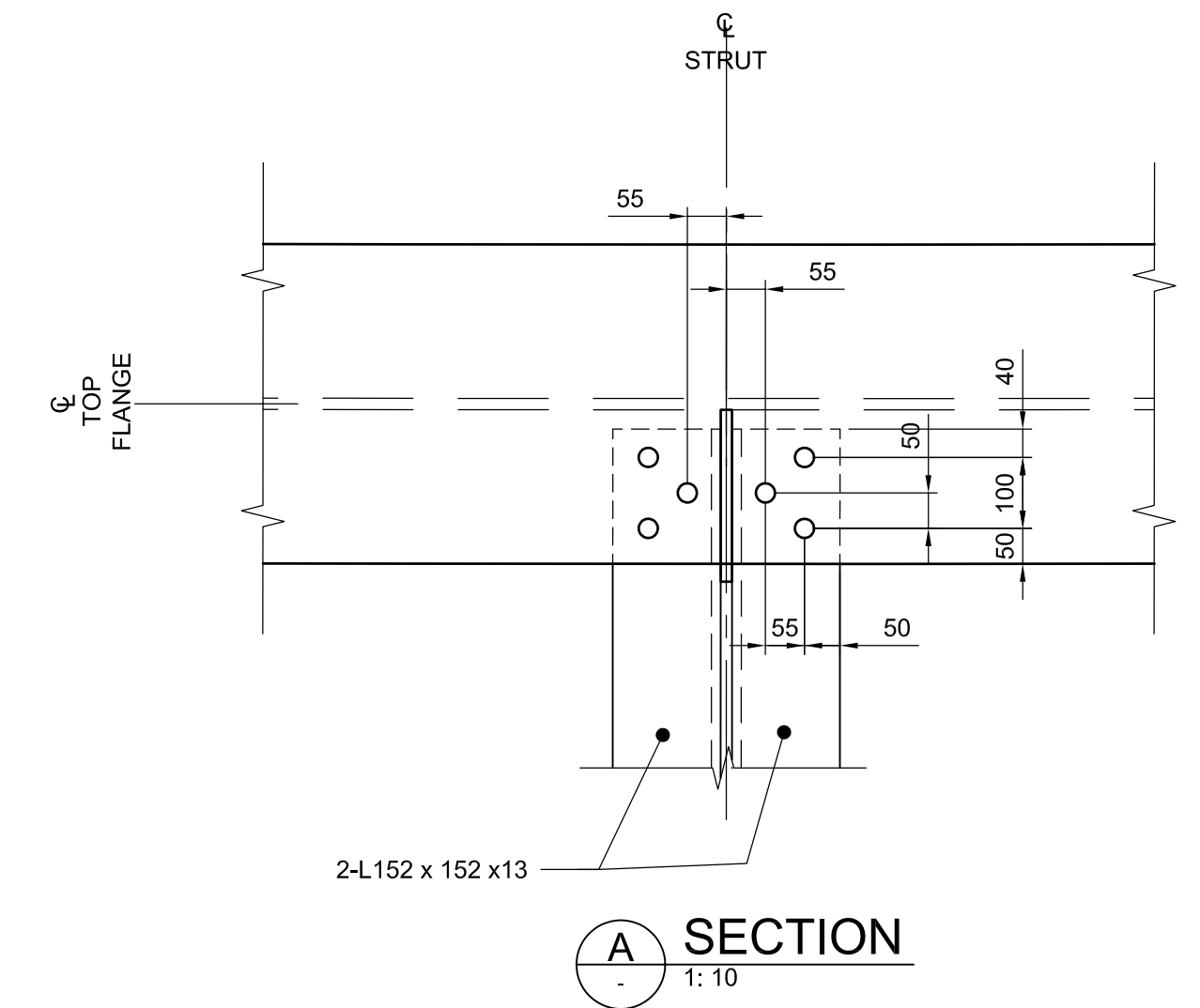


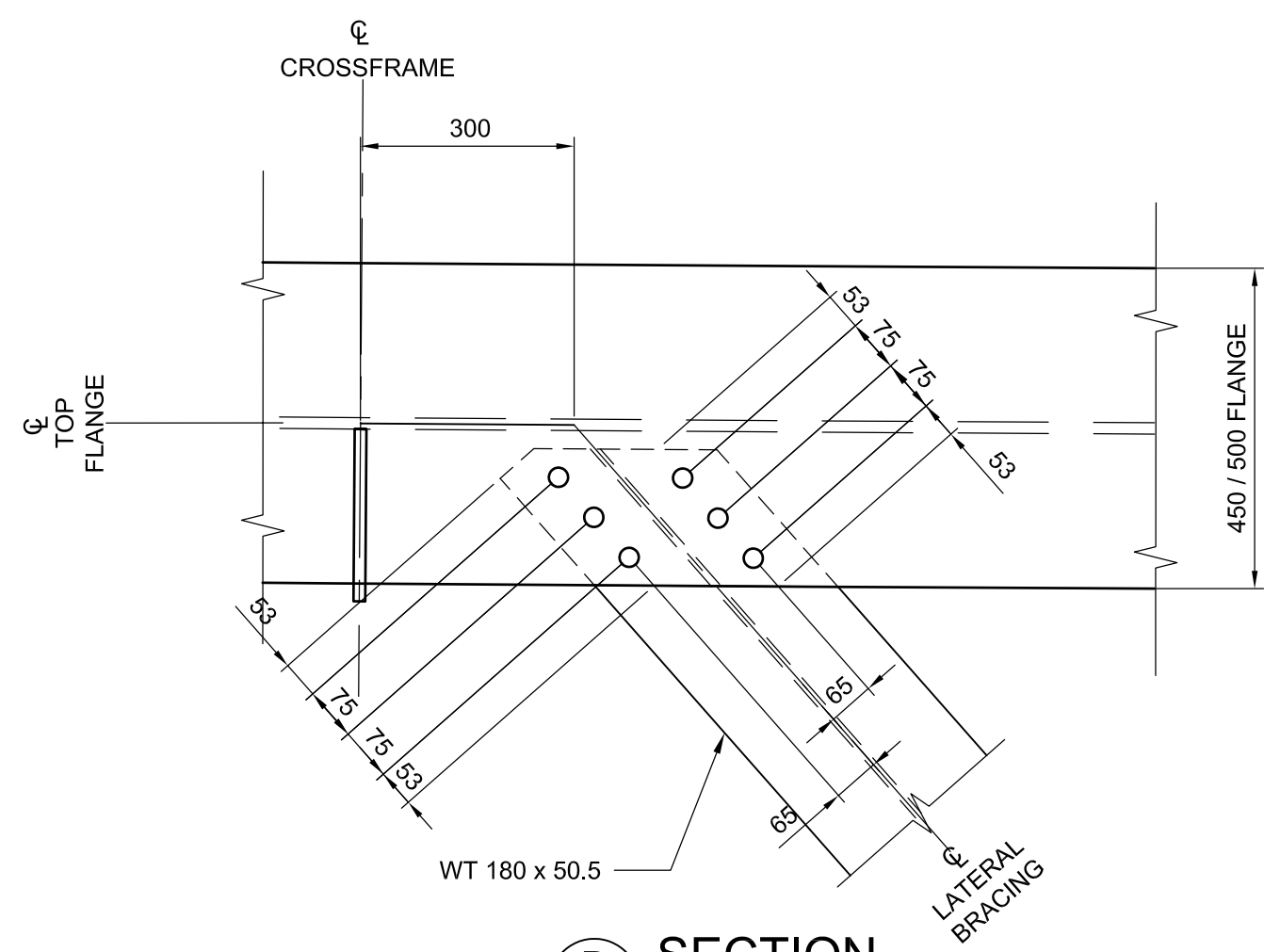
TYPICAL ONE BAY LATERAL BRACING LAYOUT
1:50
(AT SPAN 1 BETWEEN SU.1 AND SU.2)



TYPICAL ONE BAY LATERAL BRACING LAYOUT
1:50
(AT SPAN 2 BETWEEN SU.2 AND SU.3)

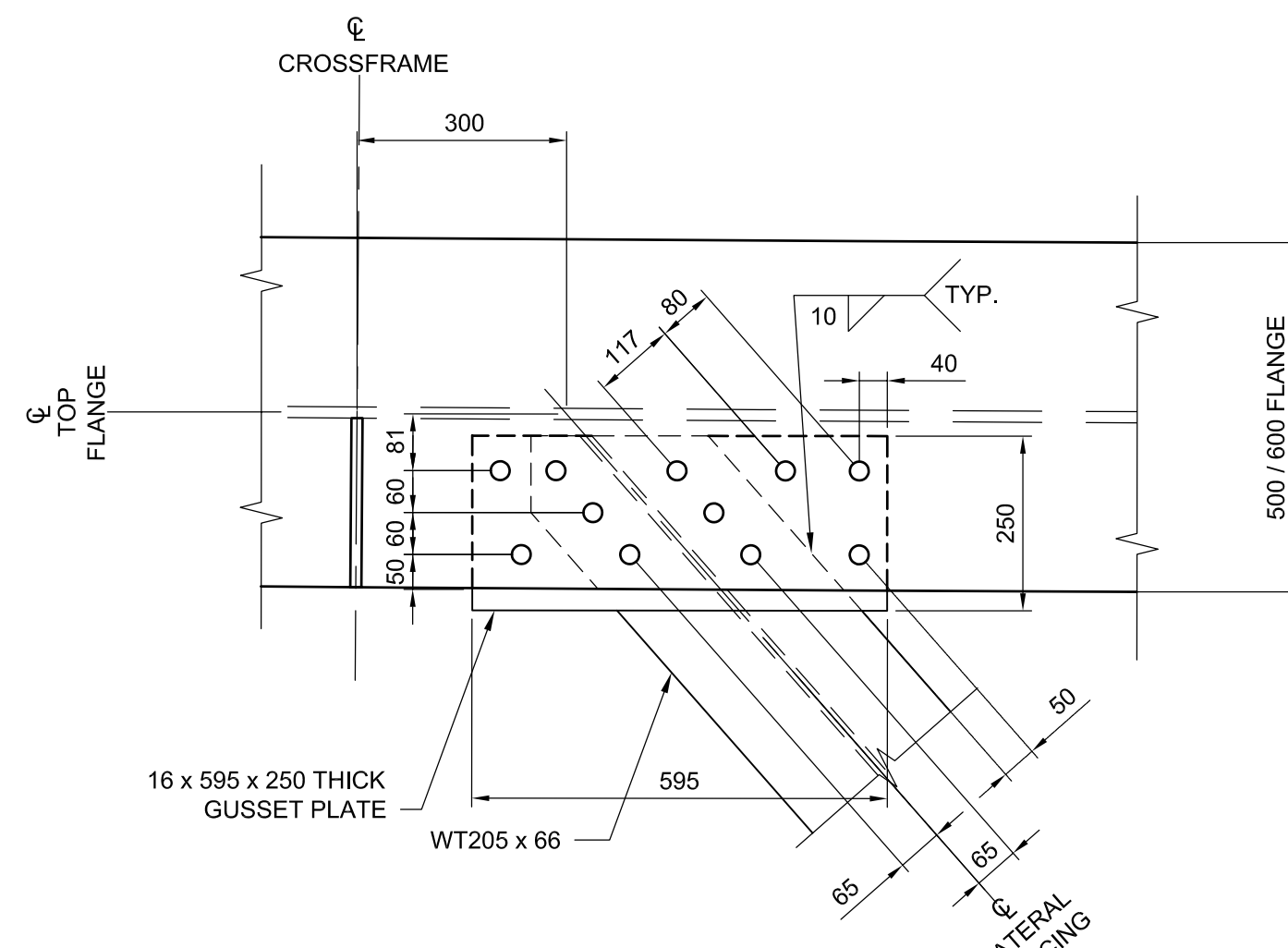


A SECTION
1:10

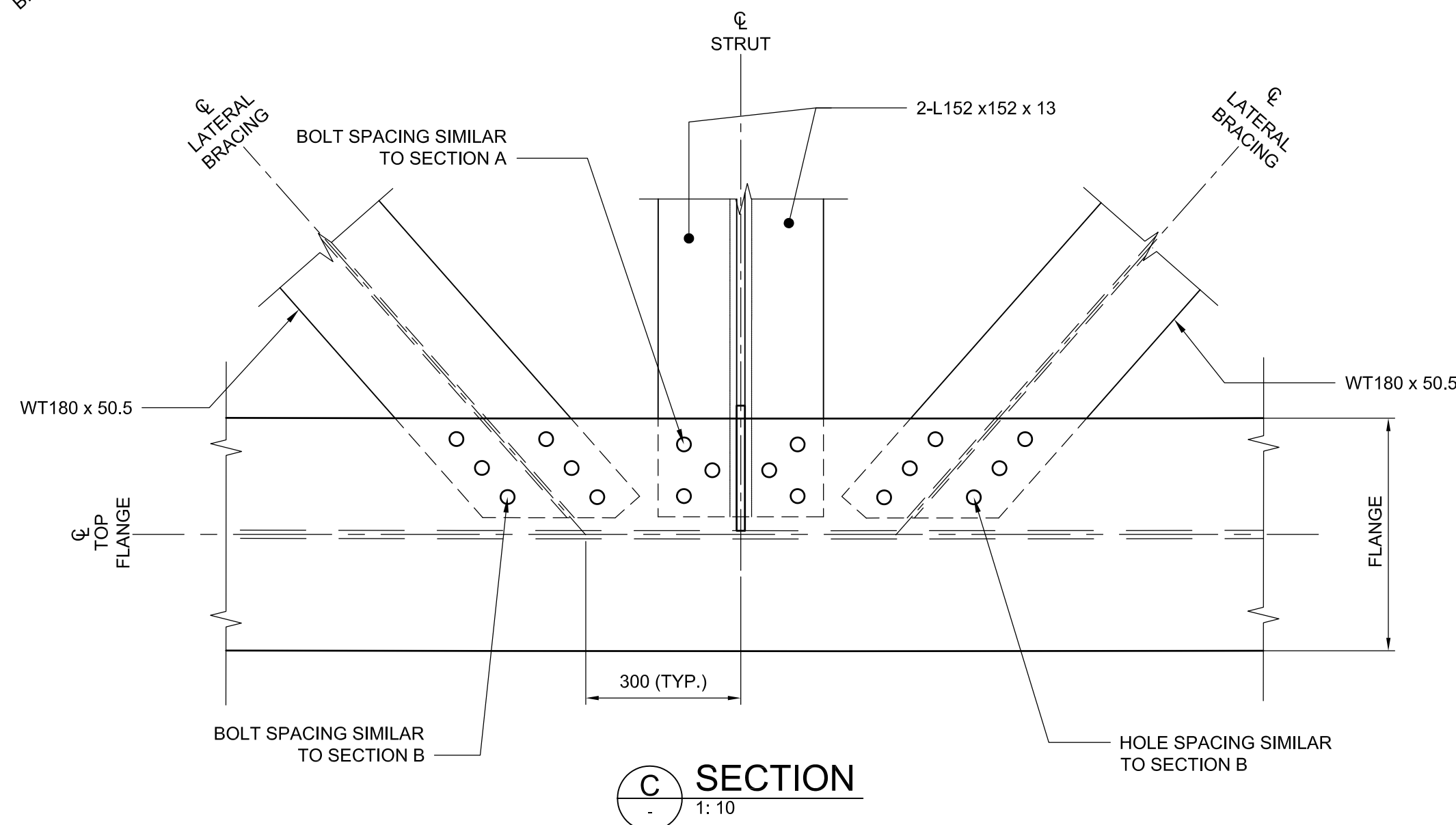


B SECTION
1:10

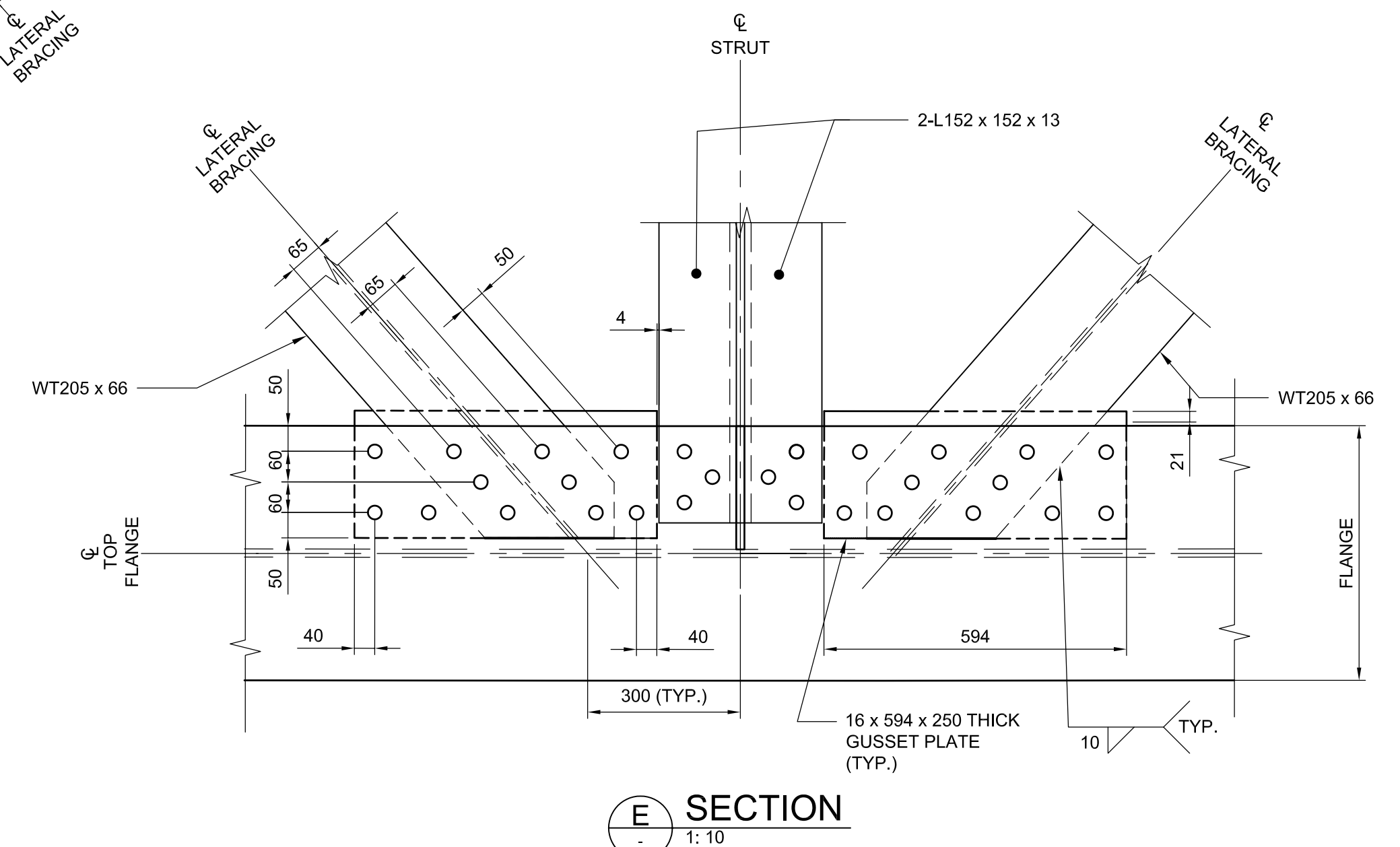
NOTE:
1. ALL HOLES SIZE SHALL BE 27 DIA.
FOR 25 DIA. BOLTS (TYP.)



D SECTION
1:10



C SECTION
1:10



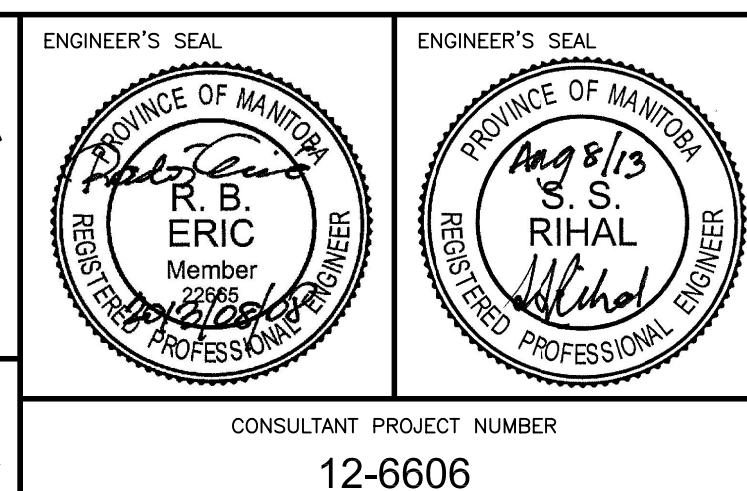
E SECTION
1:10

G:\CAD\126606\Contract\contract_2\Current\Struct_Steel_Girders - Lateral Bracing and Strut Details.dwg



UNDERGROUND STRUCTURES	B.M. ELEV.	DESIGNED BY	RE
SUPV. U/G STRUCTURES COMMITTEE	DATE	DRAWN BY	NBG
		CHECKED BY	SSR
		APPROVED BY	MBL
		HOR. SCALE	AS SHOWN
		VERTICAL	
0 ISSUED FOR TENDER	13/08/08	DATE	2013/08/01
NO. REVISIONS	DATE	BY	DATE

RELEASED FOR CONSTRUCTION	ENGINEER'S SEAL	ENGINEER'S SEAL
	PROVINCE OF MANITOBA R.B. ERIC REGISTERED PROFESSIONAL ENGINEER	PROVINCE OF MANITOBA S.S. RIHAL REGISTERED PROFESSIONAL ENGINEER
	CONSULTANT PROJECT NUMBER 12-6606	



THE CITY OF WINNIPEG
PUBLIC WORKS DEPARTMENT

Waverley West Arterial Roads Project (WWARP) Part 3 - Contract 2
Route 90 to Route 165, Overpass (Kenaston Blvd.) and Associated Works

CITY DRAWING NUMBER: B242-13-24
SHEET 24 OF 128
CONSULTANT DRAWING NUMBER