

LOCATION (10TH PT. SPAN)	0	1	2	3	4	5	6	7	8	9	10	11	12	13	14	15	16	17	18	19	20
A DL GIRDER	0	3	6	7	7	6	4	2	0	-1	0	11	24	36	46	52	52	46	35	19	0
B DL DECK	0	12	21	26	27	23	17	8	2	-2	0	30	66	102	130	147	148	132	101	55	0
C DL BARRIER, WS	0	5	9	13	13	13	11	7	4	2	0	13	29	42	53	59	58	51	39	21	0
D VERTICAL GRADE	0	89	171	247	317	381	439	490	535	575	607	642	665	677	679	669	649	618	575	522	458
E CHORD	0	69	138	207	276	344	413	482	545	595	645	711	777	843	896	923	950	977	1004	1031	1058
F NET CAMBER	0	40	70	88	90	80	58	24	-4	-22	-38	-15	7	14	12	106	159	172	148	87	0

Field Splice 1	Field Splice 2
0	45
3	128
5	51
522	679
530	903
0	0

GIRDER CAMBER DATA - GIRDER G1

LOCATION (10TH PT. SPAN)	0	1	2	3	4	5	6	7	8	9	10	11	12	13	14	15	16	17	18	19	20
A DL GIRDER	0	3	6	7	7	6	4	2	0	-1	0	10	22	34	42	47	47	42	32	17	0
B DL DECK	0	11	20	25	26	23	17	10	3	-1	0	28	60	92	117	132	132	118	90	49	0
C DL BARRIER, WS	0	5	9	12	13	13	11	7	4	2	0	13	26	39	49	53	53	47	35	20	0
D VERTICAL GRADE	0	89	172	249	320	382	438	491	537	577	610	645	668	680	681	671	649	617	573	518	452
E CHORD	0	69	138	208	277	346	415	485	548	596	644	708	771	835	880	908	937	966	994	1023	1052
F NET CAMBER	0	40	70	87	90	79	56	26	-4	-20	-34	-12	5	10	10	96	147	161	138	82	0

Field Splice 1	Field Splice 2
1	42
4	115
5	51
525	682
535	890
0	0

GIRDER CAMBER DATA - GIRDER G2

CAMBER DIAGRAM

HORIZONTAL SCALE 1:175
 VERTICAL GRADE SCALE 1:25
 VERTICAL DEFLECTION SCALE 1:2.5

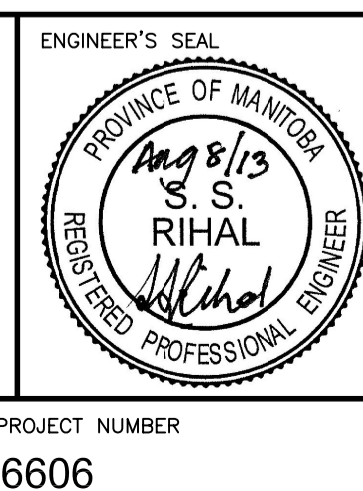
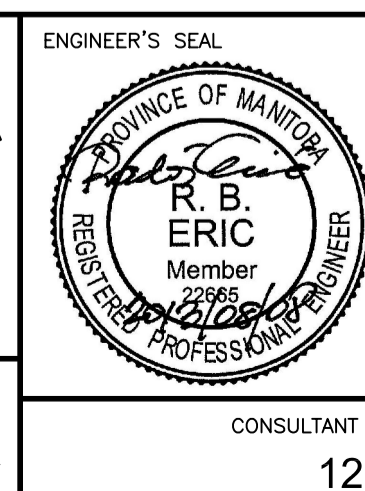
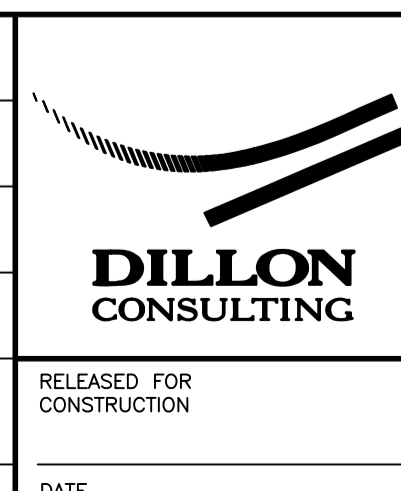
NOTE:

- NET CAMBER (F) = A + B + C + D - E
- "NET CAMBER" FIGURES ARE FOR GIRDER SECTIONS IN ZERO LOAD CONDITIONS.
- FABRICATOR IS RESPONSIBLE FOR MAKING ALLOWANCES SUCH THAT CAMBER ON COMPLETED GIRDER SECTIONS WILL BE WITHIN ALLOWABLE TOLERANCES. ALL PROCEDURES FOR CAMBER ADJUSTMENT MUST BE APPROVED BY THE ENGINEER PRIOR TO USE.
- LONGITUDINAL GIRDER DIMENSIONING (SHOWN HORIZONTAL) IS CORRECT ALONG THE BOTTOM FLANGE AT 20°.
- CHORDS TAKEN BETWEEN SPLICE POINTS.
- ALL DIMENSIONS SHOWN IN MILLIMETERS.
- CAMBER INFORMATION IS PROVIDED ALONG CENTER LINE OF EACH TUB GIRDER AND IS GIVEN IN A VERTICAL PLANE.



UNDERGROUND STRUCTURES	B.M. ELEV.	DESIGNED BY	RE
SUPV. U/G STRUCTURES COMMITTEE		DRAWN BY	RAP
		CHECKED BY	SSR
		APPROVED BY	MBL
		HOR. SCALE	AS SHOWN
		VERTICAL	
		NO. ISSUED FOR TENDER	13/08/08 MBL
		NO. REVISIONS	DATE BY DATE 2013/08/01

NOTE:
 LOCATION OF UNDERGROUND STRUCTURES AS SHOWN ARE BASED ON THE BEST INFORMATION AVAILABLE. BUT NO GUARANTEE IS GIVEN THAT ALL EXISTING UTILITIES ARE SHOWN OR THAT THE GIVEN LOCATIONS ARE EXACT. CONFIRMATION OF EXISTENCE AND EXACT LOCATION OF ALL SERVICES MUST BE OBTAINED FROM THE INDIVIDUAL UTILITIES BEFORE PROCEEDING WITH CONSTRUCTION.



THE CITY OF WINNIPEG
 PUBLIC WORKS DEPARTMENT

Waverley West Arterial Roads Project (WWARP) Part 3 - Contract 2
 Route 90 to Route 165, Overpass (Kenaston Blvd.) and Associated Works

CITY DRAWING NUMBER: B242-13-28
 SHEET 28 OF 128
 CONSULTANT DRAWING NUMBER

STEEL GIRDERS - CAMBER DIAGRAM