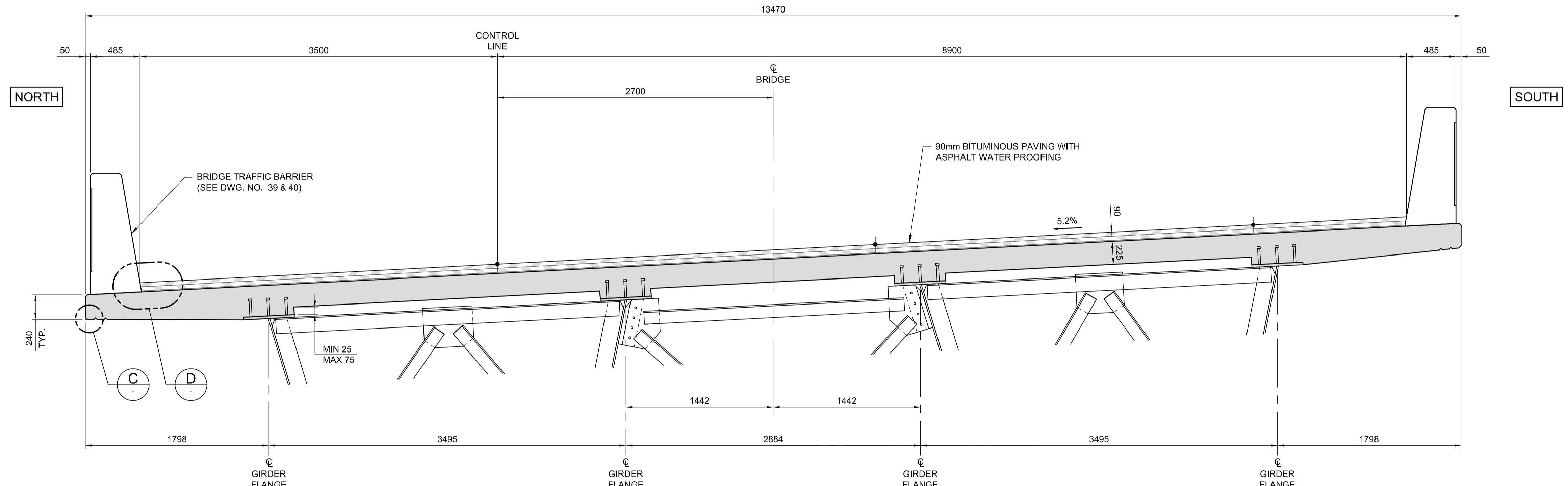
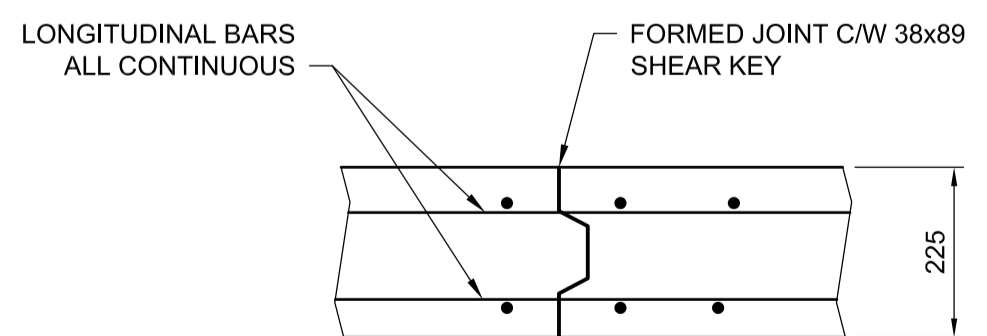


PLAN
1:150



SECTION A
1:25



KEY JOINT DETAIL FOR DECK POURS
1:10

NOTES:

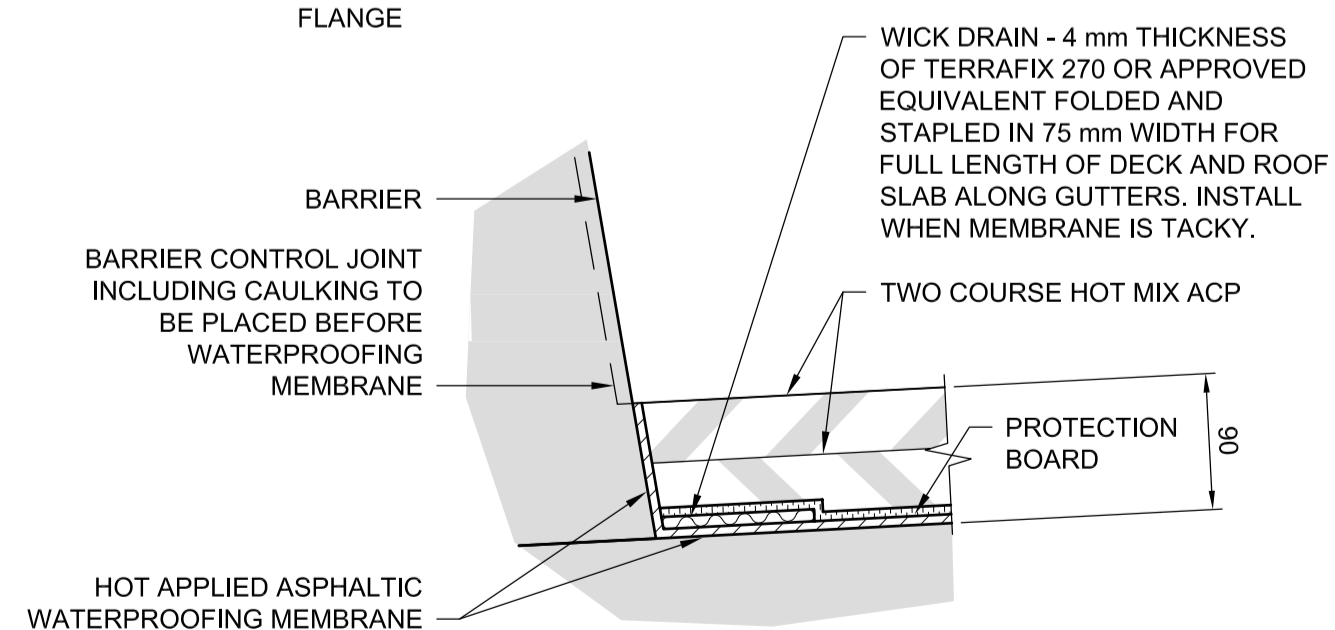
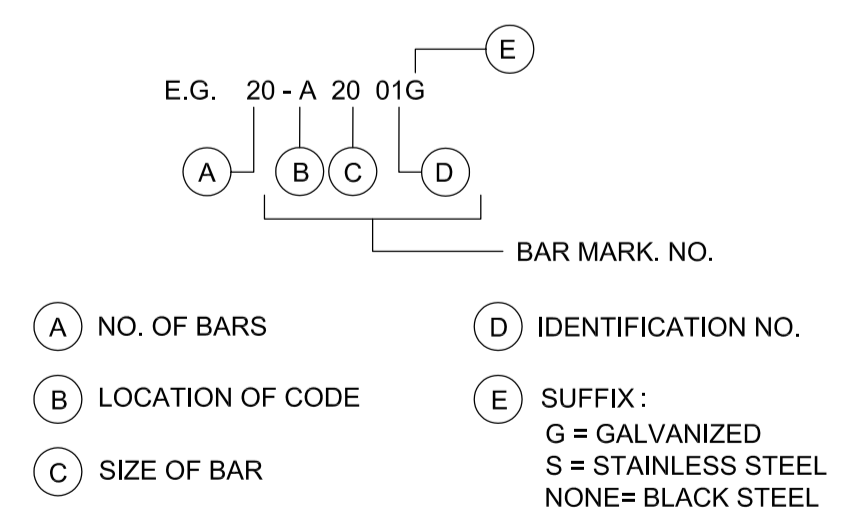
- ALL CONCRETE SHALL BE MIX TYPE 3 ($f_c' = 35 \text{ MPa}$).
- ALL REINFORCING STEEL SHALL BE STAINLESS STEEL CONFORMING TO ASTM A955M, GRADE 60(420), TYPE 2205 DUPLEX(UNS S30803), TYPE 316 LN(UNS S31653), TYPE XM-28 (S24100), TYPE 2304 (UNS S32304)
- ALL EXPOSED CORNERS SHALL HAVE A 20mm CHAMFER OR FILLET UNLESS OTHERWISE NOTED.
- ALL REINFORCING STEEL SHALL HAVE A CLEAR COVER AS FOLLOWS:
 - DECK TOP LAYER 60 + 10, - 0
 - DECK BOTTOM LAYER AT EXTERIOR OVERHANGS 60 + 10, - 0
 - DECK BOTTOM LAYER AT INTERIOR BAYS 50 ± 10
- ALL CONCRETE SURFACES SHALL RECEIVE A TYPE 1 FINISH EXCEPT FOR THE TOP OF DECK SURFACE WHICH SHALL BE FINISHED IN ACCORDANCE WITH THE REQUIREMENTS OF SPECIFICATION FOR FINISHING OPERATIONS FOR UNFORMED SURFACES.
- BRIDGE TRAFFIC BARRIERS SHALL NOT BE PLACED UNTIL THE COMPLETE DECK HAS BEEN CAST.

LAP LENGTHS: FOR STAINLESS STEEL BARS

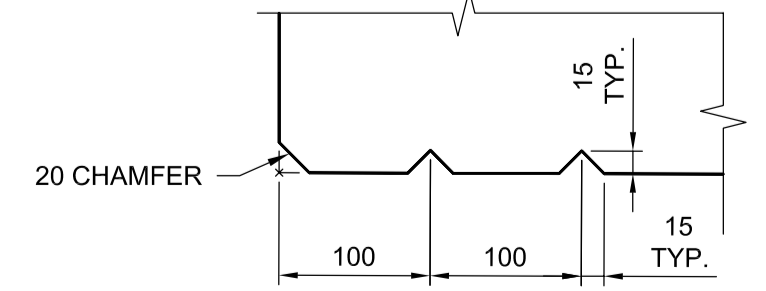
- CLASS B REINFORCEMENT LAP LENGTHS AS FOLLOWS: (UNLESS NOTED OTHERWISE)

STAINLESS STEEL	LAP SPLICE	
	TOP BARS	OTHER BARS
- 10M	700	450
- 16M	1000	650
- 19M	1200	800
- 25M	1900	1200
- 29M	2200	1550
- 36M	2650	1800
- REINFORCEMENT LAPS TO BE STAGGERED UNLESS NOTED OTHERWISE.

CODE FOR REINFORCING STEEL



DETAIL D
1:5
TYPICAL WICK DRAIN DETAIL



DETAIL C
1:5

APEGM
Certificate of Authorization
Dillon Consulting Limited (MB)
No. 1789 Date: 2013/08/01

UNDERGROUND STRUCTURES	B.M. ELEV.	DESIGNED BY	RE
SUPV. U/G STRUCTURES COMMITTEE	DATE	DRAWN BY	NBG / CGC
		CHECKED BY	SSR
		APPROVED BY	MBL
		HOR. SCALE	AS SHOWN
		VERTICAL	
0 ISSUED FOR TENDER	13/08/08	DATE	2013/08/01
NO. REVISIONS	DATE	BY	DATE

DESIGNED BY	RE
DRAWN BY	NBG / CGC
CHECKED BY	SSR
APPROVED BY	MBL
HOR. SCALE	AS SHOWN
VERTICAL	
0 ISSUED FOR TENDER	13/08/08
DATE	2013/08/01

DILLON CONSULTING
RELEASED FOR CONSTRUCTION

ENGINEER'S SEAL
PROVINCE OF MANITOBA
REGISTERED PROFESSIONAL ENGINEER
R.B. ERIC
Member

ENGINEER'S SEAL
PROVINCE OF MANITOBA
REGISTERED PROFESSIONAL ENGINEER
Aug 8/13
S.S. RIHAL
Member

THE CITY OF WINNIPEG
PUBLIC WORKS DEPARTMENT
Waverley West Arterial Roads Project (WWARP) PART 3 - CONTRACT 2
ROUTE 90 TO ROUTE 165, OVERPASS (KENASTON BLVD.) AND ASSOCIATED WORKS
CITY DRAWING NUMBER: B242-13-29
SHEET 29 OF 128
CONSULTANT DRAWING NUMBER

G:\CAD\126606\Contract\contract_2\Current\Struct_Deck_Layout.dwg