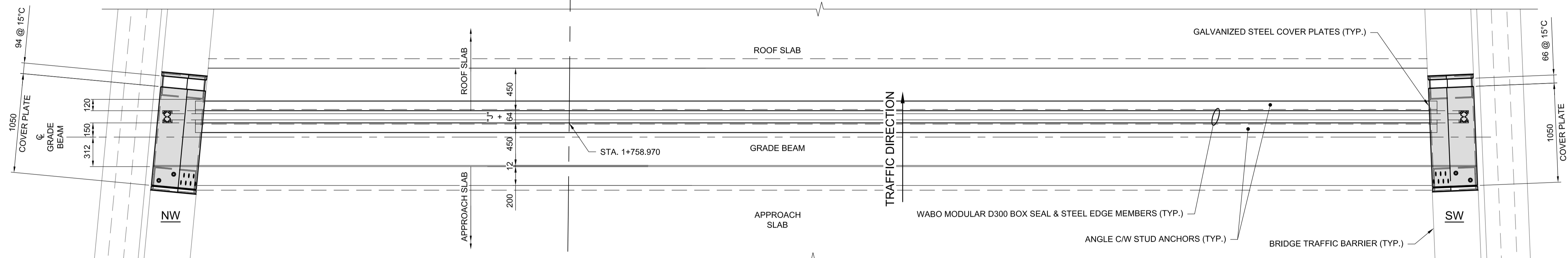
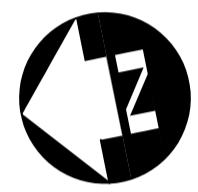
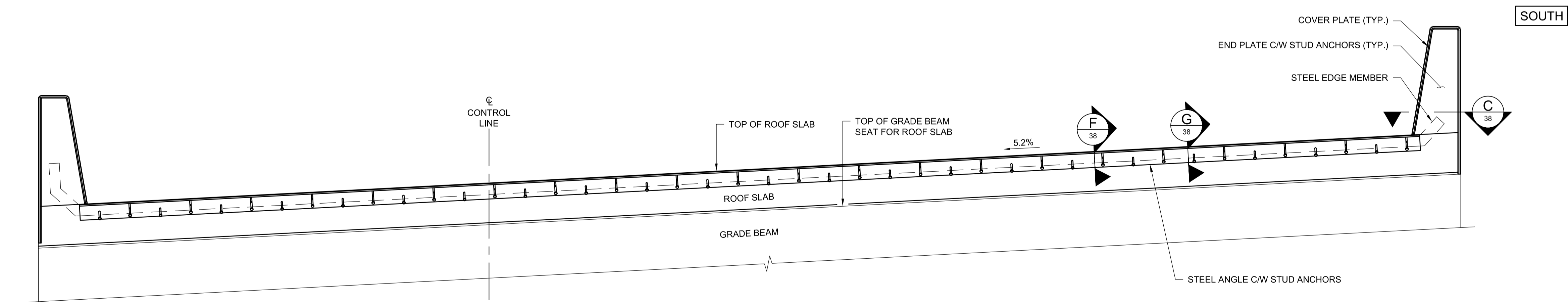


EXPANSION JOINT PLAN @ SU.3
1:25



EXPANSION JOINT PLAN @ SU.1
1:25

NORTH



TYPICAL EXPANSION ELEVATION
1:25

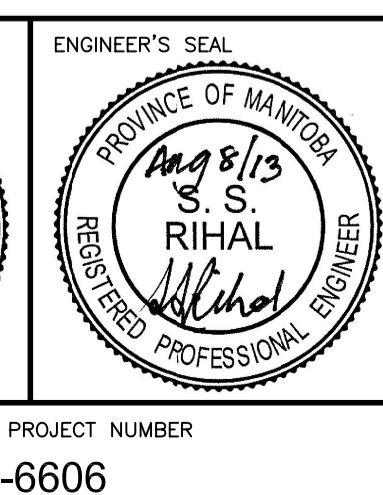
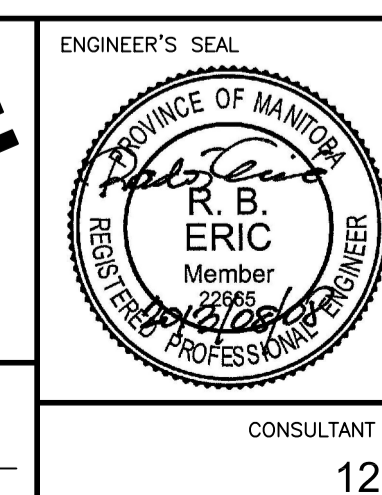
SU.3 SHOWN
SU.1 OPPOSITE HAND

G:\CAD\126606\Contract\contract_2\Current\Struct_Expansion_Joint_at_SU_3_Details.dwg

APEGM
Certificate of Authorization
Dillon Consulting Limited (MB)
No. 1789 Date: 2013/08/01

UNDERGROUND STRUCTURES	B.M. ELEV.	DESIGNED BY	RE
SUPV. U/G STRUCTURES COMMITTEE		DRAWN BY	CGC
DATE		CHECKED BY	SSR
		APPROVED BY	MBL
		HOR. SCALE	AS SHOWN
		VERTICAL	AS SHOWN
0 ISSUED FOR TENDER	13/08/08	DATE	2013/08/01
NO. REVISIONS	DATE	BY	DATE

RELEASED FOR CONSTRUCTION	DATE
CONSULTANT PROJECT NUMBER	12-6606



THE CITY OF WINNIPEG
PUBLIC WORKS DEPARTMENT

Waverley West Arterial Roads Project (WWARP) Part 3 - Contract 2
Route 90 to Route 165, Overpass (Kenaston Blvd.) and Associated Works

CITY DRAWING NUMBER: B242-13-37
SHEET 37 OF 128
CONSULTANT DRAWING NUMBER

EXPANSION JOINT DETAILS 2 OF 3