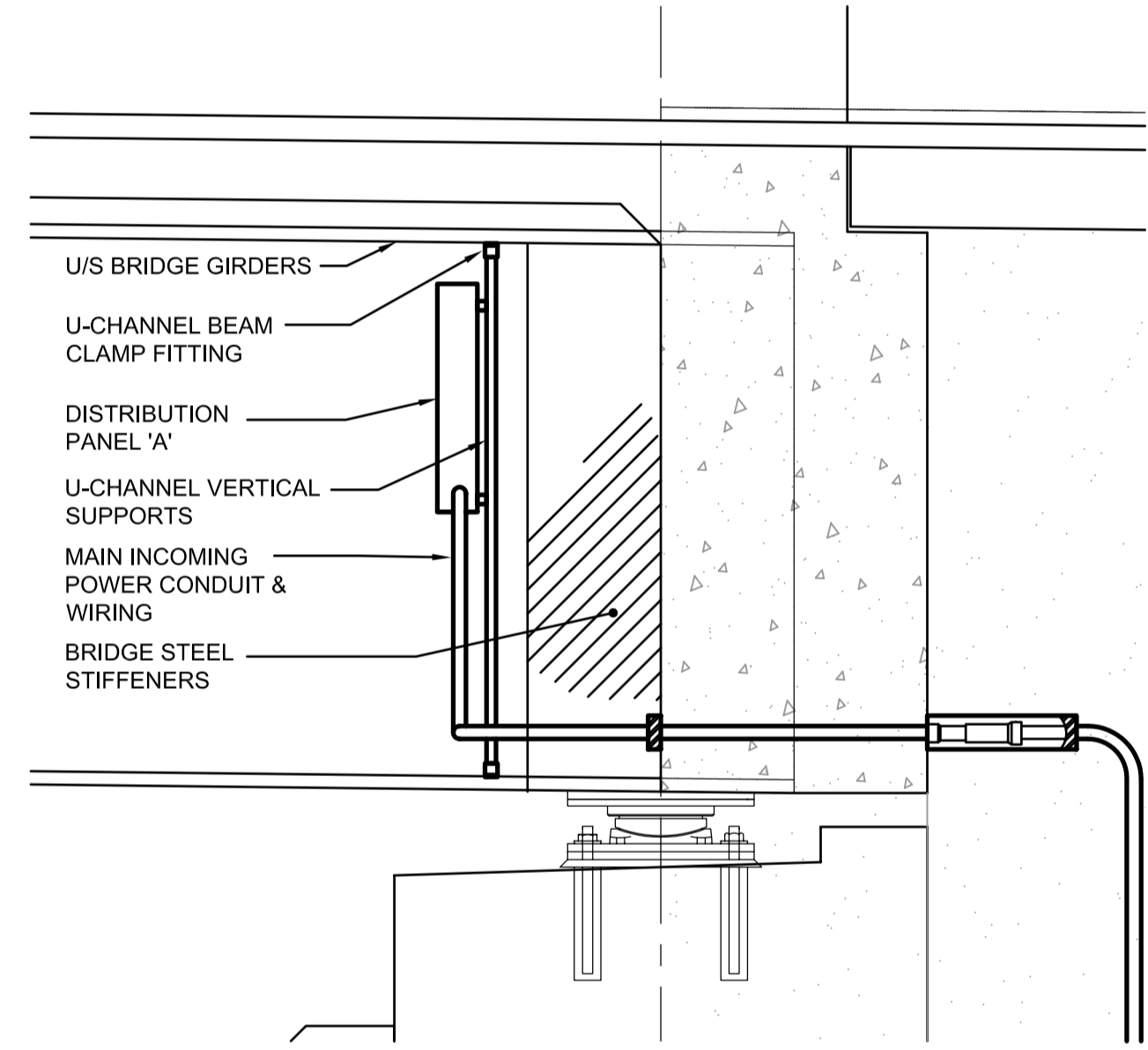


PLAN  
1:150

DISTRIBUTION PANEL 'A'										
CCT NO	DESCRIPTION	WIRE SIZE	LOAD	TRIP AMPS	N	TRIP AMPS	LOAD	DESCRIPTION	WIRE SIZE	CCT NO
01	G1 EAST LIGHTING	#12	225	15	↑	15	225	G2 EAST LIGHTING	#12	02
03	G1 EAST LIGHTING	#12	225	15		15	225	G2 EAST LIGHTING	#12	04
05	G1 WEST LIGHTING	#10	225	15		15	225	G2 WEST LIGHTING	#10	06
07	G1 WEST LIGHTING	#10	150	15		15	150	G2 WEST LIGHTING	#10	08
09	G1 EAST RECEPTACLES	#12	750	15		15	750	G2 EAST RECEPTACLES	#12	10
11	G1 EAST RECEPTACLES	#12	750	15		15	750	G2 EAST RECEPTACLES	#12	12
13	G1 WEST RECEPTACLES	#10	750	15		15	750	G2 WEST RECEPTACLES	#10	14
15	G1 WEST RECEPTACLES	#10	500	15		15	500	G2 WEST RECEPTACLES	#10	16
17	SPACE							SPACE		18
19	SPACE							SPACE		20
21	SPACE							SPACE		22
23	SPACE							SPACE		24

VOLTAGE: 120/240V      PHASE: 1      WIRE: 3      BREAKER I.C.: 10 kA  
 MAIN BREAKER: 100A      MAINS: 100A      FEEDER: 3 #3 AWG RWU90  
 MOUNTING: SURFACE      LOCATION: G2 SOUTH GIRDER ENCLOSURE  
 FED FROM: CSTE / METERING ENCLOSURE



PANEL MOUNTING  
1:25

NOTES

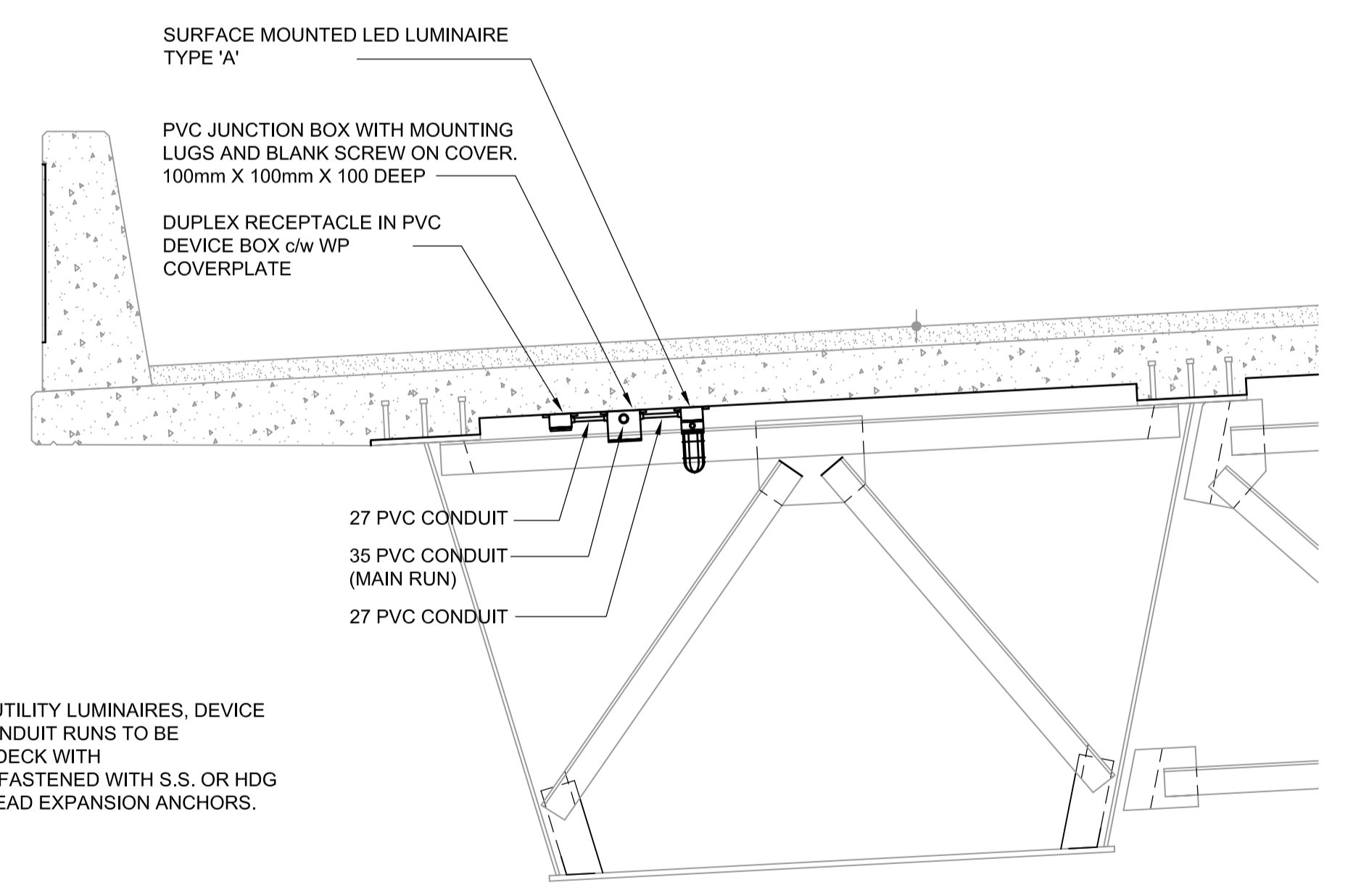
- LIGHT FIXTURE AND RECEPTACLE ASSEMBLIES TO BE NOMINAL 9000mm APART. INSTALL LIGHT FIXTURES MINIMUM 450mm AWAY FROM CROSS FRAMING, STRUTS AND LATERAL BRACING.
- CONDUIT TRANSITS TO BE SEALED WATERTIGHT AT SLEEVES WITH ELECTRICAL DUCT SEALANT.

LEGEND

- TYPE 'A' LIGHT FIXTURE - SCEPTALIGHT WET LOCATION, CEILING MOUNTED THERMOPLASTIC POLYESTER RESIN HOUSING c/w CLEAR GLASS GLOBE AND GLOBE GUARD, LAMP - LED 18 WATT, 120 V MEDIUM SCREW BASE, GLOBE LAMP STYLE
- CSA 3, PVC JUNCTION BOX
- DUPLEX RECEPTACLE
- GANGED 3 WAY SWITCH

NOTES

- ENCLOSED GIRDER UTILITY LUMINAIRES, DEVICE BOXES AND MAIN CONDUIT RUNS TO BE SUPPORTED TO U/S DECK WITH PVC CONDUIT CLIPS FASTENED WITH S.S. OR HDG SCREWS SET INTO LEAD EXPANSION ANCHORS.



SECTION - GIRDER G2 (GIRDER G1 MIRROR)  
1:25

G:\CAD\126606\Contract\contract\_2\Current\Struct\_Electrical\Layout and Details.dwg

**APEGM**  
Certificate of Authorization  
**Dillon Consulting Limited (MB)**  
No. 1789 Date: 2013/08/01

UNDERGROUND STRUCTURES	B.M. ELEV.	DESIGNED BY SCK
SUPV. U/G STRUCTURES COMMITTEE	DATE	DRAWN BY SCK
NOTE: LOCATION OF UNDERGROUND STRUCTURES AS SHOWN ARE BASED ON THE BEST INFORMATION AVAILABLE BUT NO GUARANTEE IS GIVEN THAT ALL EXISTING UTILITIES ARE SHOWN OR THAT THE GIVEN LOCATIONS ARE EXACT. CONFIRMATION OF EXISTENCE AND EXACT LOCATION OF ALL SERVICES MUST BE OBTAINED FROM THE INDIVIDUAL UTILITIES BEFORE PROCEEDING WITH CONSTRUCTION.		CHECKED BY BM
		APPROVED BY MBL
		HOR. SCALE AS SHOWN
		VERTICAL AS SHOWN
0 ISSUED FOR TENDER	13/08/08	MBL
NO. REVISIONS	DATE	BY
	2013/08/01	

**DILLON CONSULTING**

RELEASED FOR CONSTRUCTION

DATE

ENGINEER'S SEAL

ENGINEER'S SEAL

**B. L. MOORE**  
AUG 8/13  
REGISTERED PROFESSIONAL ENGINEER

CONSULTANT PROJECT NUMBER  
12-6606

**THE CITY OF WINNIPEG**  
PUBLIC WORKS DEPARTMENT

Waverley West Arterial Roads Project (WWARP) PART 3 - CONTRACT 2  
ROUTE 90 TO ROUTE 165, OVERPASS (KENASTON BLVD.) AND ASSOCIATED WORKS

CITY DRAWING NUMBER  
B242-13-56

SHEET 56 OF 128

CONSULTANT DRAWING NUMBER

BRIDGE ELECTRICAL 1 OF 2