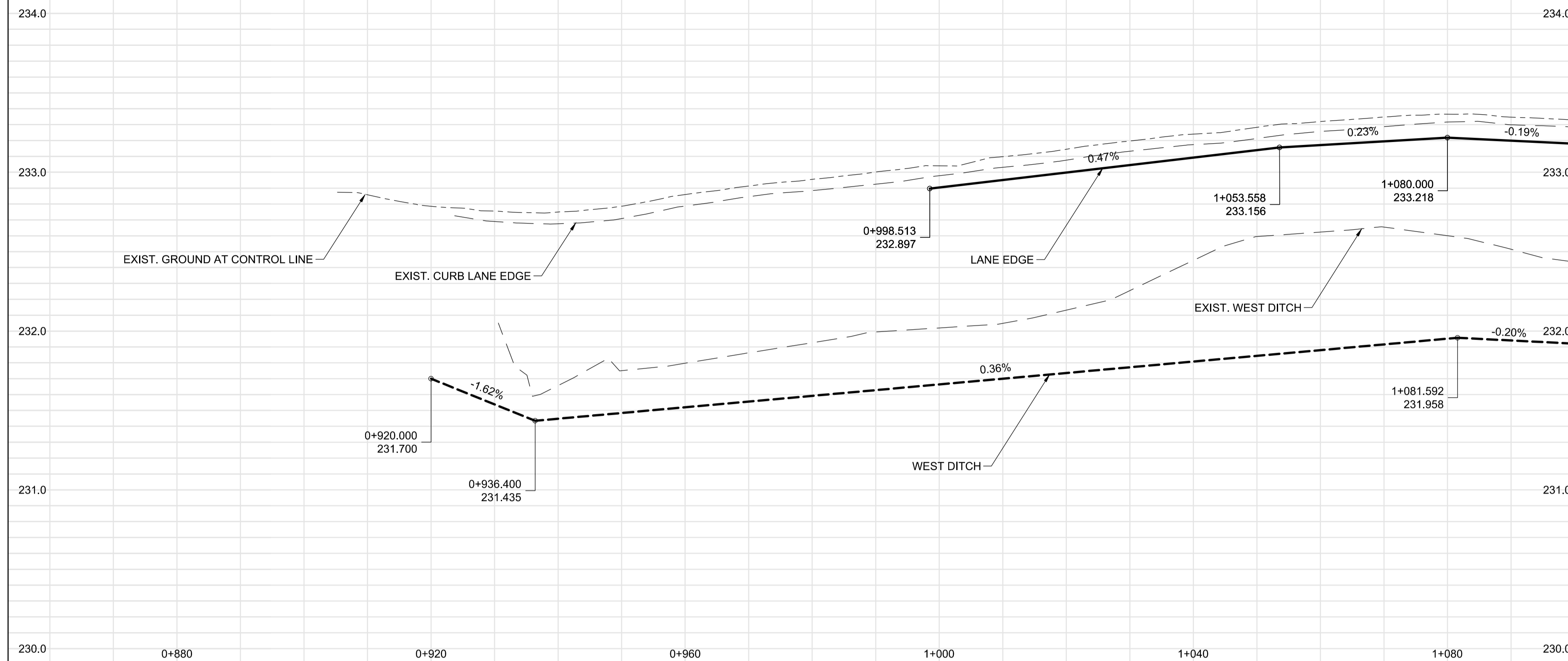
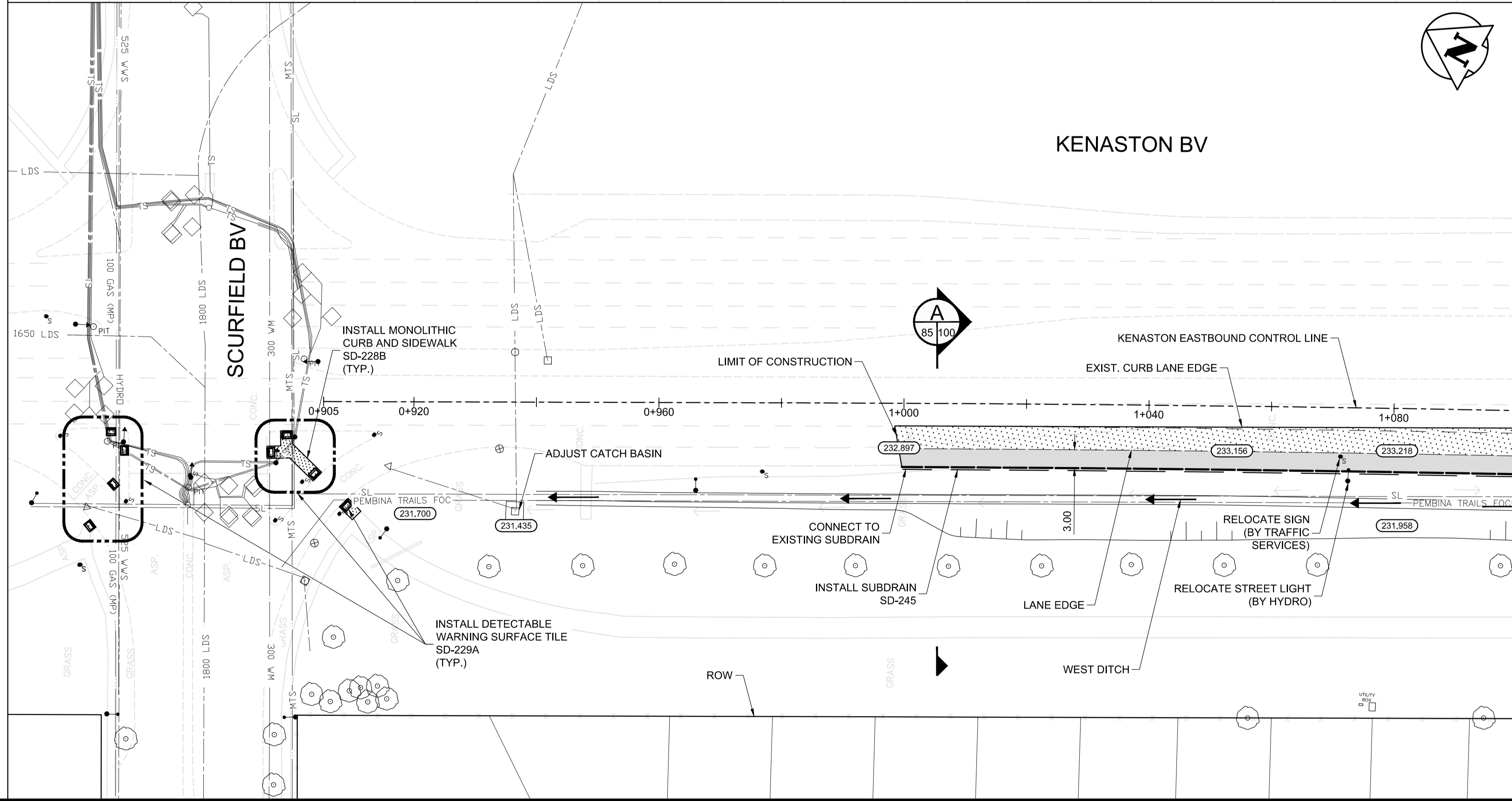


KENASTON EB



MATCHLINE AT STA: 1+100

KENASTON BV



METRIC

WHOLE NUMBERS INDICATE MILLIMETRES
DECIMALIZED NUMBERS INDICATE METRES

WARNING

- IF POWER EQUIPMENT OR EXPLOSIVES ARE TO BE USED FOR EXCAVATION ON THIS PROJECT THE CONTRACTOR MUST:
- NOTIFY THE GAS COMPANY OF THE PROPOSED LOCATION OF EXCAVATION.
 - TAKE PRECAUTION TO AVOID DAMAGE TO GAS COMPANY INSTALLATIONS SEE PROVINCIAL REGULATION 210/72 FOR DETAILS.
 - OBTAIN EXCAVATION PERMITS PRIOR TO CONSTRUCTION.
 - A MINIMUM VERTICAL SEPARATION OF 300 mm FROM GAS MAINS AND 100 mm FROM GAS SERVICE MUST BE MAINTAINED BETWEEN ANY MANITOBA HYDRO FACILITY AND ANY NEW INSTALLATIONS.
 - A MINIMUM 900 mm OF COVER SHALL BE MAINTAINED IN ALL AREAS WHERE EQUIPMENT WILL BE CROSSING, TRAVELING OR COMPACTING OVER THE HIGH PRESSURE GAS MAINS.
 - IF EQUIPMENT MUST CROSS, TRAVEL, OR COMPACT OVER THE GAS MAIN WITH LESS THAN THE MINIMUM DEPTH COVER, EARTH BRIDGING OR STEEL PLATES SHALL BE PLACED OVER THE MAIN AND EXTEND A MINIMUM OF 1.0 METRE ON EITHER SIDE AT EACH CROSSING LOCATION.

G:\CAD\126606\Contract\Contract_2\Current\Civil_Plan_Profile.dwg

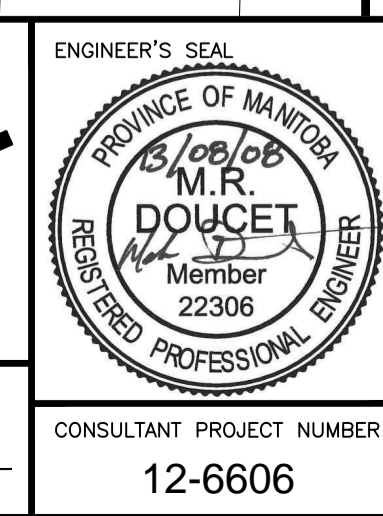
150 WM	WATERMAIN	150 WM	MTS	M.T.S.	150 mm W.M.	WATERMAIN	150 mm W.M.
HYDRANT VALVE	HYDRANT VALVE	CONCRETE ASPHALT	CONCRETE ASPHALT	CONCRETE ASPHALT	CONCRETE ASPHALT	CONCRETE ASPHALT	CONCRETE ASPHALT
300 LDS	LAND DRAINAGE SEWER	300 LDS	300 LDS	300 mm L.D.S.	300 mm L.D.S.	LAND DRAINAGE SEWER	300 mm L.D.S.
250 WWS	WASTE WATER SEWER	250 WWS	250 WWS	250 mm W.W.S.	250 mm W.W.S.	WASTE WATER SEWER	250 mm W.W.S.
MANHOLE	MANHOLE	PAVING STONES	PAVING STONES	PAVING STONES	PAVING STONES	PAVING STONES	PAVING STONES
CATCH BASIN	CATCH BASIN	PROPERTY LINE	PROPERTY LINE	PROPERTY LINE	PROPERTY LINE	PROPERTY LINE	PROPERTY LINE
TEST HOLES	TEST HOLES	SURVEY BAR	SURVEY BAR	SURVEY BAR	SURVEY BAR	SURVEY BAR	SURVEY BAR
JUNCTIONS	JUNCTIONS	CURB RAMP	CURB RAMP	CURB RAMP	CURB RAMP	CURB RAMP	CURB RAMP
CULVERT	CULVERT	DITCH	DITCH	DITCH	DITCH	DITCH	DITCH
100 GAS	GAS	100 GAS	100 GAS	100 mm GAS	100 mm GAS	GAS	100 mm GAS
EXISTING	LEGEND-PLAN	PROPOSED	EXISTING	LEGEND-PLAN	PROPOSED	EXISTING	LEGEND-PROFILE

UNDERGROUND STRUCTURES
SUPV. U/G STRUCTURES COMMITTEE DATE

NOTE:
LOCATION OF UNDERGROUND STRUCTURES AS SHOWN ARE BASED ON THE BEST INFORMATION AVAILABLE BUT NO GUARANTEE IS GIVEN THAT ALL EXISTING UTILITIES ARE SHOWN OR THAT THE GIVEN LOCATIONS ARE EXACT. CONFIRMATION OF EXISTENCE AND EXACT LOCATION OF ALL SERVICES MUST BE OBTAINED FROM THE INDIVIDUAL UTILITIES BEFORE PROCEEDING WITH CONSTRUCTION.

B.M. 654008	N: 5515764.610	654210	N: 5514436.957
ELEV. 232.463 m	E: 633359.697	ELEV. 232.463 m	E: 630550.534
DESIGNED BY	MRD	CHECKED BY	DBW
DRAWN BY	PMW	APPROVED BY	DPK
HOR. SCALE	1:500	RELEASED FOR CONSTRUCTION	
VERTICAL	1:20	DATE	2013/08/08
0	ISSUED FOR TENDER	13/08/08	MRD
NO.	REVISIONS	DATE	BY

DESIGNED BY	MRD
DRAWN BY	PMW
CHECKED BY	DBW
APPROVED BY	DPK
HOR. SCALE	1:500
VERTICAL	1:20
DATE	2013/08/08



THE CITY OF WINNIPEG
PUBLIC WORKS DEPARTMENT

WAVERLEY WEST ARTERIAL ROADS PROJECT
(WWARP) PART 3 - CONTRACT 2
ROUTE 90 TO ROUTE 165 OVERPASS (KENASTON BLVD.)
AND ASSOCIATED WORKS

CITY DRAWING NUMBER
B242-13-85

SHEET **85** OF **128**

CONSULTANT DRAWING NUMBER
P-3349-85

PLAN AND PROFILE - KENASTON EB
STA: 0+905 TO 1+100

CONSULTANT PROJECT NUMBER
12-6606