

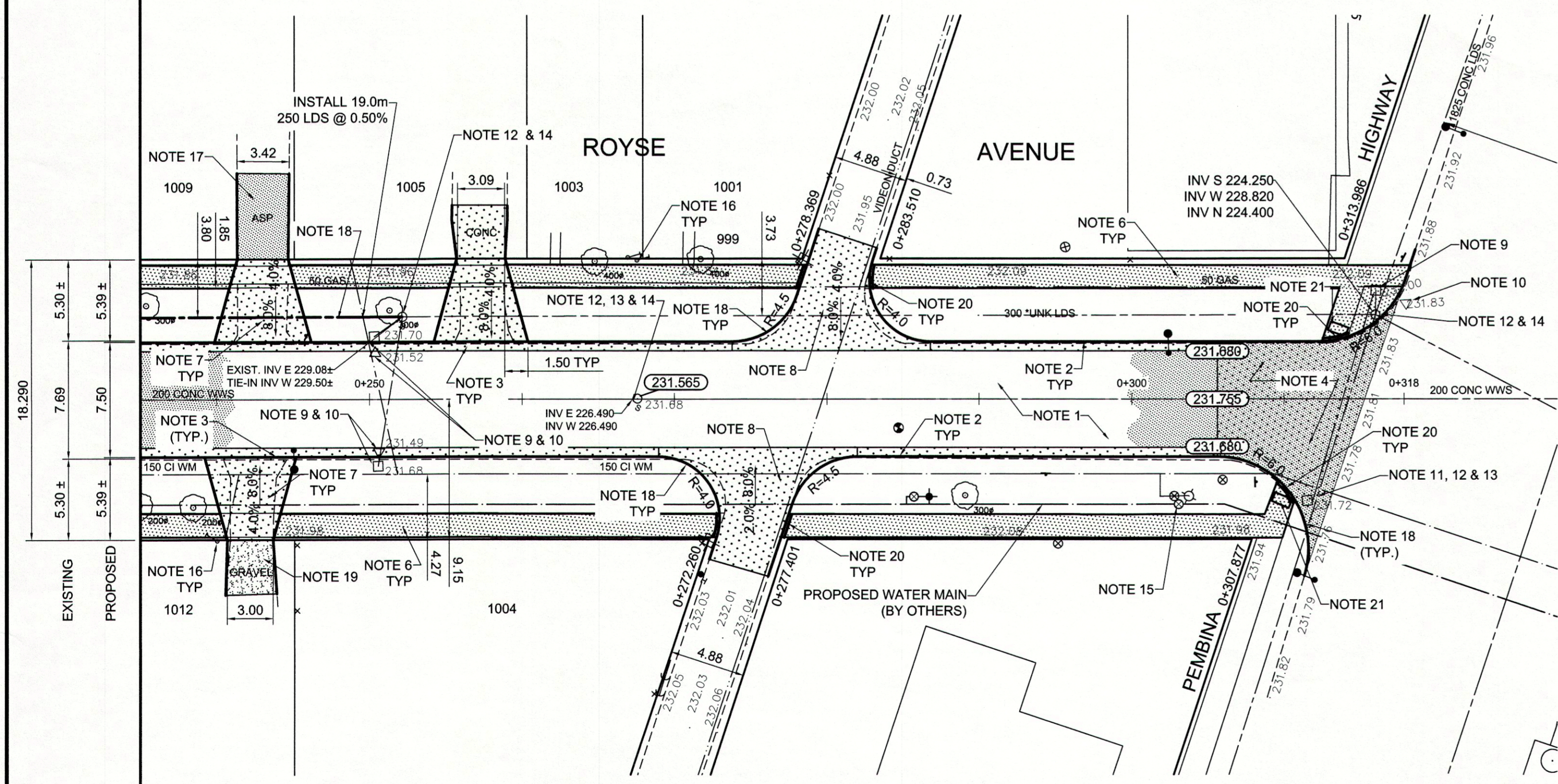
REFERENCE NOTES

- A. PAVEMENT DIMENSIONS ARE TO BACK OF CURB
- B. BASELINE IS CENTRE LINE RIGHT-OF-WAY
- C. PROPERTY LINES OBTAINED FROM CITY OF WINNIPEG L.B.I.S., AND NO SCALE FACTOR WAS APPLIED
- D. REFER TO AECOM FIELD BOOK NO. 4790

CONSTRUCTION NOTES

1. REMOVE EXISTING CONCRETE PAVEMENT AND CONSTRUCT NEW ASPHALTIC PAVEMENT TYPE 1A (100mm)
2. CONSTRUCT NEW BARRIER CURB AND GUTTER (180mm HT.)
3. CONSTRUCT NEW LIP CURB AND GUTTER (40mm HT. INTEGRAL)
4. REMOVE EXISTING CONCRETE PAVEMENT AND CONSTRUCT NEW 200mm REINFORCED CONCRETE PAVEMENT c/w 50mm ASPHALT OVERLAY
5. CONSTRUCT NEW RAMP CURB AND GUTTER (10mm HT. INTEGRAL)
6. RENEW EXISTING 100mm CONCRETE SIDEWALK
7. REMOVE EXISTING CONCRETE PAVEMENT AND CONSTRUCT NEW 150mm REINFORCED CONCRETE PAVEMENT
8. REMOVE EXISTING CONCRETE PAVEMENT AND CONSTRUCT NEW 200mm REINFORCED CONCRETE PAVEMENT
9. REMOVE EXISTING CATCH BASIN AND ABANDON EXISTING LEAD
10. REMOVE AND ABANDON EXISTING CURB INLET
11. REMOVE EXISTING FRAME AND COVER AND PLACE NEW FRAME AND GRATED COVER (AP-004/AP-006)
12. ADJUST EXISTING MANHOLE/CATCH PIT TO GRADE
13. INSTALL NEW CAST IRON RISER RING
14. REMOVE EXISTING FRAME AND COVER AND PLACE NEW FRAME AND SOLID COVER (AP-004/AP-005)
15. ADJUST EXISTING WATER VALVE TO GRADE
16. ADJUST EXISTING CURB STOP
17. REMOVE EXISTING ASPHALTIC PAVEMENT AND PLACE NEW ASPHALTIC PAVEMENT
18. CONSTRUCT NEW MODIFIED BARRIER CURB (180mm HT. INTEGRAL)
19. REGRADE EXISTING GRAVEL APPROACH
20. CONSTRUCT NEW CURB RAMP (10mm HT. INTEGRAL)
21. INSTALL DETECTABLE WARNING SURFACE TILE

MATCHLINE 0+235



METRIC
WHOLE NUMBERS INDICATE MILLIMETRES
DECIMALIZED NUMBERS INDICATE METRES

150 mm W.M.		300mm L.D.S.		250mm W.W.S.		HYDRO		C PROFILE		LOCATION APPROVED													
WATERMAIN	HYDRANT	VALVE	LAND DRAINAGE SEWER	WASTEWATER SEWER	MANHOLE	CATCH BASIN	CURB INLET	JUNCTIONS	CULVERT	GAS	EXISTING	PROPOSED	EXISTING	PROPOSED	EXISTING	PROPOSED	EXISTING	PROPOSED	LEGEND - PLAN	LEGEND - PLAN	LEGEND - PROFILE	LEGEND - PROFILE	
---	+	⊙	---	---	⊙	⊠	▽	---	---	---	---	---	---	---	---	---	---	---	---	---	---	---	---
---	---	---	---	---	---	---	---	---	---	---	---	---	---	---	---	---	---	---	---	---	---	---	---

LEGEND - PROFILE

--- NORTHWEST GUTTER
--- SOUTH/EAST GUTTER
--- N/W PROPERTY LINE
--- S/E PROPERTY LINE

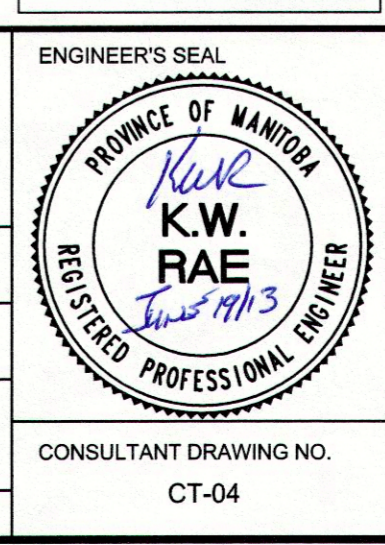
LOCATION APPROVED UNDERGROUND STRUCTURES

SUPV. U/G STRUCTURES COMMITTEE DATE

NOTE:
LOCATION OF UNDERGROUND STRUCTURES AS SHOWN ARE BASED ON THE BEST INFORMATION AVAILABLE. BUT NO GUARANTEE IS GIVEN THAT ALL EXISTING UTILITIES ARE SHOWN OR THAT THE GIVEN LOCATIONS ARE EXACT. CONFIRMATION OF EXISTENCE AND EXACT LOCATION OF ALL SERVICES MUST BE OBTAINED FROM THE INDIVIDUAL UTILITIES BEFORE PROCEEDING WITH CONSTRUCTION.

B.M. 84R579 N.W. cor. Clarence Ave. & Hudson St., Tblt. on ELEV. 232.632
pipe, 5.8m S. of N.L. Clarence Ave along W.L. Hudson St. produced from the N.

DESIGNED BY	BC	CHECKED BY	KWR
DRAWN BY	SS/RT	APPROVED BY	
HOR. SCALE:	1:250	RELEASED FOR CONSTRUCTION BY:	
VERTICAL:	1:10	DATE	JUNE 2013



THE CITY OF WINNIPEG
PUBLIC WORKS DEPARTMENT
ENGINEERING DIVISION

2013 LOCAL STREET RENEWAL PROGRAM

ROYSE AVENUE - HUDSON STREET TO PEMBINA HIGHWAY
ASPHALT PAVEMENT RECONSTRUCTION
STATION 0+235 TO PEMBINA HIGHWAY

CITY DRAWING NUMBER
SHEET 4 OF 17

CONSULTANT DRAWING NO. CT-04