

- REFERENCE NOTES**
- PAVEMENT DIMENSIONS ARE TO BACK OF CURB
 - BASELINE IS CENTRE LINE RIGHT-OF-WAY
 - PROPERTY LINES OBTAINED FROM CITY OF WINNIPEG L.B.I.S., AND NO SCALE FACTOR WAS APPLIED
 - REFER TO AECOM FIELD BOOK NO. 4795

- CONSTRUCTION NOTES**
- REMOVE EXISTING ASPHALT PAVEMENT AND PLACE NEW TYPE 1A ASPHALTIC PAVEMENT (85mm AVG)
 - REMOVE EXISTING CONCRETE PAVEMENT AND CONSTRUCT NEW 200mm REINFORCED CONCRETE PAVEMENT c/w 50mm TYPE 1A ASPHALTIC PAVEMENT
 - CONSTRUCT NEW RAMP CURB (100mm REVEAL HT, INTEGRAL)
 - RENEW BARRIER CURB (100mm REVEAL HT, DOWELLED)
 - CONSTRUCT NEW MODIFIED BARRIER CURB (150mm REVEAL HT, DOWELLED)
 - INSTALL NEW CURB AND GUTTER INLET c/w CATCH PIT (SD-023) AND CONNECT TO EXISTING CATCH BASIN
 - REMOVE EXISTING FRAME AND COVER AND PLACE NEW FRAME AND GRATED COVER (AP-004/AP-006)
 - RENEW EXISTING 100mm CONCRETE SIDEWALK
 - ADJUST EXISTING WATER VALVE TO GRADE
 - ADJUST EXISTING MANHOLE/CATCH BASIN TO GRADE
 - REMOVE EXISTING FRAME AND COVER AND PLACE NEW FRAME AND COVER (AP-004/AP-005)
 - INSTALL NEW CAST IRON RISER RING
 - REMOVE EXISTING PATIO BLOCK BUS PAD AND CONSTRUCT NEW 100mm CONCRETE SIDEWALK
 - CONSTRUCT BARRIER CURB (100mm REVEAL HT, SEPARATE)



METRIC
WHOLE NUMBERS INDICATE MILLIMETRES
DECIMALIZED NUMBERS INDICATE METRES

150 mm W.M.		300mm L.D.S.		250mm W.W.S.		150 mm W.M.		300mm L.D.S.		250mm W.W.S.	
◇	WATERMAIN	◇	VALVE	◇	MANHOLE	◇	WATERMAIN	◇	VALVE	◇	MANHOLE
◇	HYDRANT	◇	CATCH BASIN	◇	CURB INLET	◇	HYDRANT	◇	CATCH BASIN	◇	CURB INLET
◇	LAND DRAINAGE SEWER	◇	JUNCTIONS	◇	CULVERT	◇	LAND DRAINAGE SEWER	◇	JUNCTIONS	◇	CULVERT
◇	WASTEWATER SEWER	◇	GAS	◇	EXISTING	◇	WASTEWATER SEWER	◇	GAS	◇	EXISTING
◇	CONCRETE	◇	ASPHALT	◇	PROPERTY LINE	◇	CONCRETE	◇	ASPHALT	◇	PROPERTY LINE
◇	PROPERTY LINE	◇	SURVEY BAR	◇	ELEVATION	◇	PROPERTY LINE	◇	SURVEY BAR	◇	ELEVATION
◇	SURVEY BAR	◇	TREE	◇	SIDEWALK RAMP	◇	SURVEY BAR	◇	TREE	◇	SIDEWALK RAMP
◇	ELEVATION	◇	CONCRETE SIDEWALK	◇	FENCE	◇	ELEVATION	◇	CONCRETE SIDEWALK	◇	FENCE

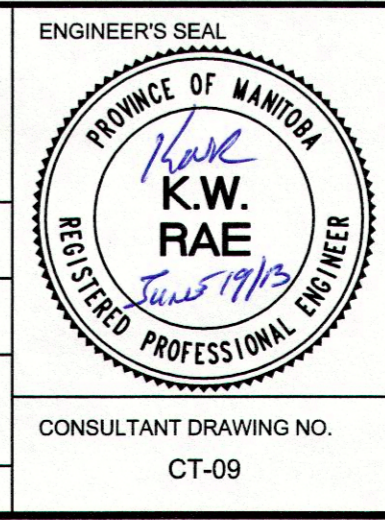
LOCATION APPROVED UNDERGROUND STRUCTURES

DATE: _____

NOTE:
LOCATION OF UNDERGROUND STRUCTURES AS SHOWN ARE BASED ON THE BEST INFORMATION AVAILABLE, BUT NO GUARANTEE IS GIVEN THAT ALL EXISTING UTILITIES ARE SHOWN OR THAT THE GIVEN LOCATIONS ARE EXACT. CONFIRMATION OF EXISTENCE AND EXACT LOCATION OF ALL SERVICES MUST BE OBTAINED FROM THE INDIVIDUAL UTILITIES BEFORE PROCEEDING WITH CONSTRUCTION.

B.M. 85R627 S.W. Cor. Sydney Ave. & Watt St. Tblt. on pipe, ELEV. 230.204
2m E. of W.L. Watt St. & on S.L. Sydney St.

DESIGNED BY	BC	CHECKED BY	KWR
DRAWN BY	SS/JT	APPROVED BY	
ISSUED FOR TENDER	06/20/13	HOR. SCALE:	1:250
ISSUED FOR REVIEW	06/10/13	VERTICAL:	1:10
NO. REVISIONS		RELEASED FOR CONSTRUCTION BY:	
DATE	JUNE 2013	DATE	JUNE 19/13



THE CITY OF WINNIPEG
PUBLIC WORKS DEPARTMENT
ENGINEERING DIVISION

2013 LOCAL STREET RENEWAL PROGRAM

WATT STREET - SYDNEY AVENUE TO BRONX AVENUE
PAVEMENT REHABILITATION
SYDNEY AVENUE TO STATION 0+120

CITY DRAWING NUMBER
SHEET 9 OF 17

CONSULTANT DRAWING NO. CT-09