

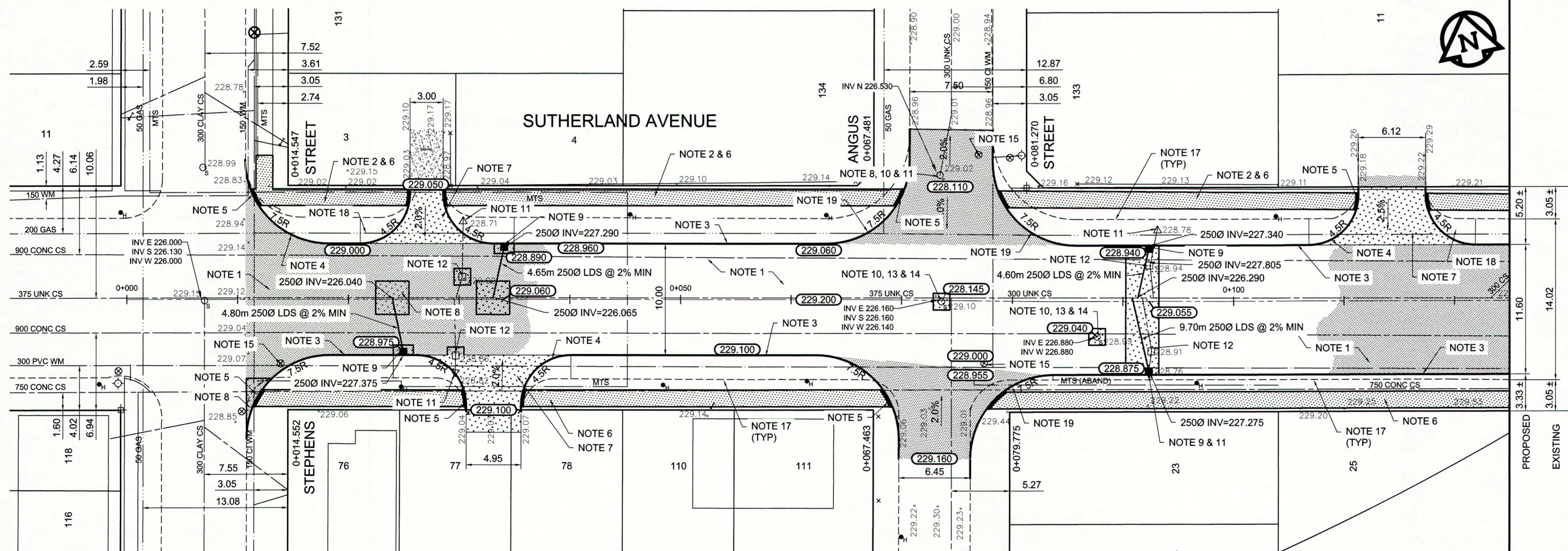
SECTION A  
N.T.S.

REFERENCE NOTES

- A. PAVEMENT DIMENSIONS ARE TO BACK OF CURB
- B. BASELINE IS CENTRE LINE RIGHT-OF-WAY
- C. PROPERTY LINES OBTAINED FROM CITY OF WINNIPEG L.B.I.S., AND NO SCALE FACTOR WAS APPLIED
- D. REFER TO AECOM FIELD BOOK NO. 4796

CONSTRUCTION NOTES

1. REMOVE EXISTING ASPHALTIC PAVEMENT AND CONSTRUCT NEW TYPE 1A ASPHALTIC PAVEMENT TYPE 1A (100mm)
2. REMOVE EXISTING MONOLITHIC CURBS AND SIDEWALK
3. CONSTRUCT NEW BARRIER CURB (VARYING REVEAL HT. DOWELLED)
4. CONSTRUCT NEW MODIFIED BARRIER CURB (150mm HT. INTEGRAL)
5. CONSTRUCT NEW CURB RAMP (10mm HT. INTEGRAL)
6. CONSTRUCT NEW 100mm CONCRETE SIDEWALK
7. REMOVE EXISTING CONCRETE PAVEMENT AND CONSTRUCT NEW 150mm REINFORCED CONCRETE PAVEMENT
8. REMOVE EXISTING CONCRETE PAVEMENT AND CONSTRUCT NEW 200mm REINFORCED CONCRETE
9. INSTALL NEW CURB AND GUTTER INLET w/ W CATCH BASIN (SD-024) AND CONNECT TO EXISTING 300 CS
10. REMOVE EXISTING FRAME AND COVER AND PLACE NEW SOLID COVER (AP-005)
11. REMOVE EXISTING CATCH PIT AND ABANDON EXISTING LEAD
12. REMOVE EXISTING CATCH BASIN AND ABANDON EXISTING LEAD
13. ADJUST EXISTING MANHOLE/CATCH BASIN TO GRADE
14. INSTALL NEW CAST IRON RISER RING
15. ADJUST EXISTING WATER VALVE TO GRADE
16. ADJUST EXISTING CURB STOP
17. REMOVE EXISTING BARRIER CURB
18. REMOVE EXISTING APPROX. 450mm CONCRETE PAVEMENT
19. CONSTRUCT NEW MODIFIED BARRIER CURB (150mm HT. SEPARATE)



METRIC  
WHOLE NUMBERS INDICATE MILLIMETRES  
DECIMALIZED NUMBERS INDICATE METRES

EXISTING	LEGEND - PLAN	PROPOSED	EXISTING	LEGEND - PLAN	PROPOSED	EXISTING	LEGEND - PROFILE	PROPOSED
	WATERMAIN			HYDRO			NORTHWEST GUTTER	
	VALVE			CONCRETE			SOUTH/EAST GUTTER	
	LAND DRAINAGE SEWER			ASPHALT			N/W PROPERTY LINE	
	WASTEWATER SEWER			PROPERTY LINE			S/E PROPERTY LINE	
	MANHOLE			SURVEY BAR				
	CATCH BASIN			ELEVATION				
	CURB INLET			TREE				
	JUNCTIONS			SIDEWALK RAMP				
	CULVERT			CONCRETE SIDEWALK FENCE				
	GAS							

LOCATION APPROVED UNDERGROUND STRUCTURES

SUPV. U/G STRUCTURES COMMITTEE DATE

NOTE:  
LOCATION OF UNDERGROUND STRUCTURES AS SHOWN ARE BASED ON THE BEST INFORMATION AVAILABLE. BUT NO GUARANTEE IS GIVEN THAT ALL EXISTING UTILITIES ARE SHOWN OR THAT THE GIVEN LOCATIONS ARE EXACT. CONFIRMATION OF EXISTENCE AND EXACT LOCATION OF ALL SERVICES MUST BE OBTAINED FROM THE INDIVIDUAL UTILITIES BEFORE PROCEEDING WITH CONSTRUCTION.

NO.	REVISIONS	DATE	BY
0	ISSUED FOR TENDER	06/20/13	BC
A	ISSUED FOR REVIEW	06/10/13	BC

DESIGNED BY	BC	CHECKED BY	KWR
DRAWN BY	SS	APPROVED BY	
HOR. SCALE:	1:250	RELEASED FOR CONSTRUCTION BY:	
VERTICAL:	1:10	DATE	JUNE 19/13



ENGINEER'S SEAL  
PROVINCE OF MANITOBA  
K.W. RAE  
REGISTERED PROFESSIONAL ENGINEER  
CONSULTANT DRAWING NO. CT-12

THE CITY OF WINNIPEG  
PUBLIC WORKS DEPARTMENT  
ENGINEERING DIVISION

2013 LOCAL STREET RENEWAL PROGRAM

SUTHERLAND AVENUE - STEPHENS STREET TO HIGGINS AVENUE  
PAVEMENT REHABILITATION  
STEPHENS STREET TO STATION 0+125

CITY DRAWING NUMBER  
SHEET 12 OF 17