

- REFERENCE NOTES**
- PAVEMENT DIMENSIONS ARE TO BACK OF CURB
 - BASELINE IS CENTRE LINE RIGHT-OF-WAY
 - PROPERTY LINES OBTAINED FROM CITY OF WINNIPEG L.B.I.S., AND NO SCALE FACTOR WAS APPLIED
 - REFER TO AECOM FIELD BOOK NO. 4797
- CONSTRUCTION NOTES**
- REMOVE EXISTING CONCRETE PAVEMENT AND CONSTRUCT NEW ASPHALTIC PAVEMENT TYPE1A (100mm)
 - REMOVE AND REINSTALL EXISTING PAVERS
 - REMOVE EXISTING CONCRETE PAVEMENT AND CONSTRUCT NEW 150mm REINFORCED CONCRETE PAVEMENT
 - REMOVE EXISTING CATCHBASIN AND ABANDON LEAD
 - INSTALL NEW CURB AND GUTTER INLET c/w CATCHBASIN (SD-024) AND CONNECT TO EXISTING 750 OR 900 CONCRETE LDS
 - INSTALL 150mm SUBDRAIN
 - ADJUST EXISTING MANHOLE/CATCH BASIN TO GRADE
 - INSTALL NEW CAST IRON RISER RING
 - REMOVE EXISTING FRAME AND COVER AND PLACE NEW FRAME AND SOLID COVER (AP-005 AND AP-004)
 - CONSTRUCT NEW BARRIER CURB AND GUTTER (180mm HT.)
 - CONSTRUCT NEW MODIFIED BARRIER CURB AND GUTTER (180mm HT.)
 - CONSTRUCT NEW RAMP CURB (10mm HT. INTEGRAL)
 - CONSTRUCT NEW LIP CURB AND GUTTER (40mm HT. INTEGRAL)
 - ADJUST EXISTING WATER VALVE TO GRADE
 - RENEW EXISTING 100mm CONCRETE SIDEWALK
 - ADJUST EXISTING CURB STOP



METRIC
WHOLE NUMBERS INDICATE MILLIMETRES
DECIMALIZED NUMBERS INDICATE METRES

EXISTING	LEGEND - PLAN	PROPOSED	EXISTING	LEGEND - PLAN	PROPOSED	EXISTING	LEGEND - PROFILE	PROPOSED
150 mm W.M.	WATERMAIN	150 mm W.M.	HYDRO	HYDRO	HYDRO	X	C PROFILE	
300mm L.D.S.	LAND DRAINAGE SEWER	300mm L.D.S.	M.T.S.	M.T.S.	M.T.S.	□	NORTHWEST GUTTER	
250mm W.W.S.	WASTEWATER SEWER	250mm W.W.S.	CONCRETE	CONCRETE	CONCRETE	○	SOUTH/EAST GUTTER	
○	MANHOLE	○	ASPHALT	ASPHALT	ASPHALT	◇	N/W PROPERTY LINE	
□	CATCH BASIN	□	PROPERTY LINE	PROPERTY LINE	PROPERTY LINE	○	S/E PROPERTY LINE	
▽	CURB INLET	▽	SURVEY BAR	SURVEY BAR	SURVEY BAR			
+	JUNCTIONS	+	ELEVATION	ELEVATION	ELEVATION			
▭	CULVERT	▭	TREE	TREE	TREE			
○	GAS	○	SIDEWALK RAMP	SIDEWALK RAMP	SIDEWALK RAMP			
			CONCRETE SIDEWALK	CONCRETE SIDEWALK	CONCRETE SIDEWALK			
			FENCE	FENCE	FENCE			

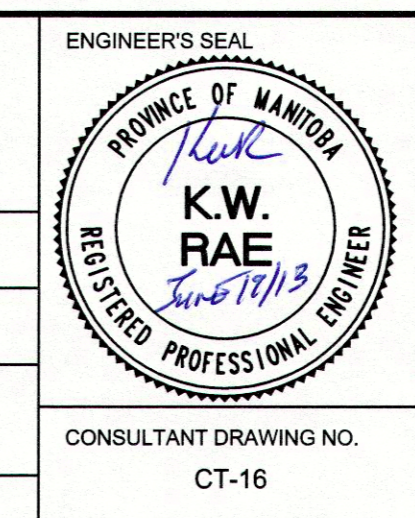
LOCATION APPROVED UNDERGROUND STRUCTURES

SUPV. U/G STRUCTURES COMMITTEE DATE

NOTE:
LOCATION OF UNDERGROUND STRUCTURES AS SHOWN ARE BASED ON THE BEST INFORMATION AVAILABLE. BUT NO GUARANTEE IS GIVEN THAT ALL EXISTING UTILITIES ARE SHOWN OR THAT THE GIVEN LOCATIONS ARE EXACT. CONFIRMATION OF EXISTENCE AND EXACT LOCATION OF ALL SERVICES MUST BE OBTAINED FROM THE INDIVIDUAL UTILITIES BEFORE PROCEEDING WITH CONSTRUCTION.

B.M. 81R913 S.W. cor. Leila Ave. & Diplomat Dr. Tbt. on pipe. ELEV. 231.109 on S.L. Leila Ave. & 5.1m E. of W.L. Diplomat

DESIGNED BY	BC/SS	CHECKED BY	KWR
DRAWN BY	SS	APPROVED BY	
HOR. SCALE:	1:250	RELEASED FOR CONSTRUCTION BY:	
VERTICAL:	1:10	DATE	June 19/13
DATE	JUNE 2013	DATE	



THE CITY OF WINNIPEG
PUBLIC WORKS DEPARTMENT
ENGINEERING DIVISION

2013 LOCAL STREET RENEWAL PROGRAM

DIPLOMAT DRIVE - LEILA AVENUE TO TEMPLETON AVENUE
ASPHALT PAVEMENT RECONSTRUCTION
STATION 0+228 TO STATION 0+360

CITY DRAWING NUMBER
SHEET 16 OF 17

CONSULTANT DRAWING NO. CT-16