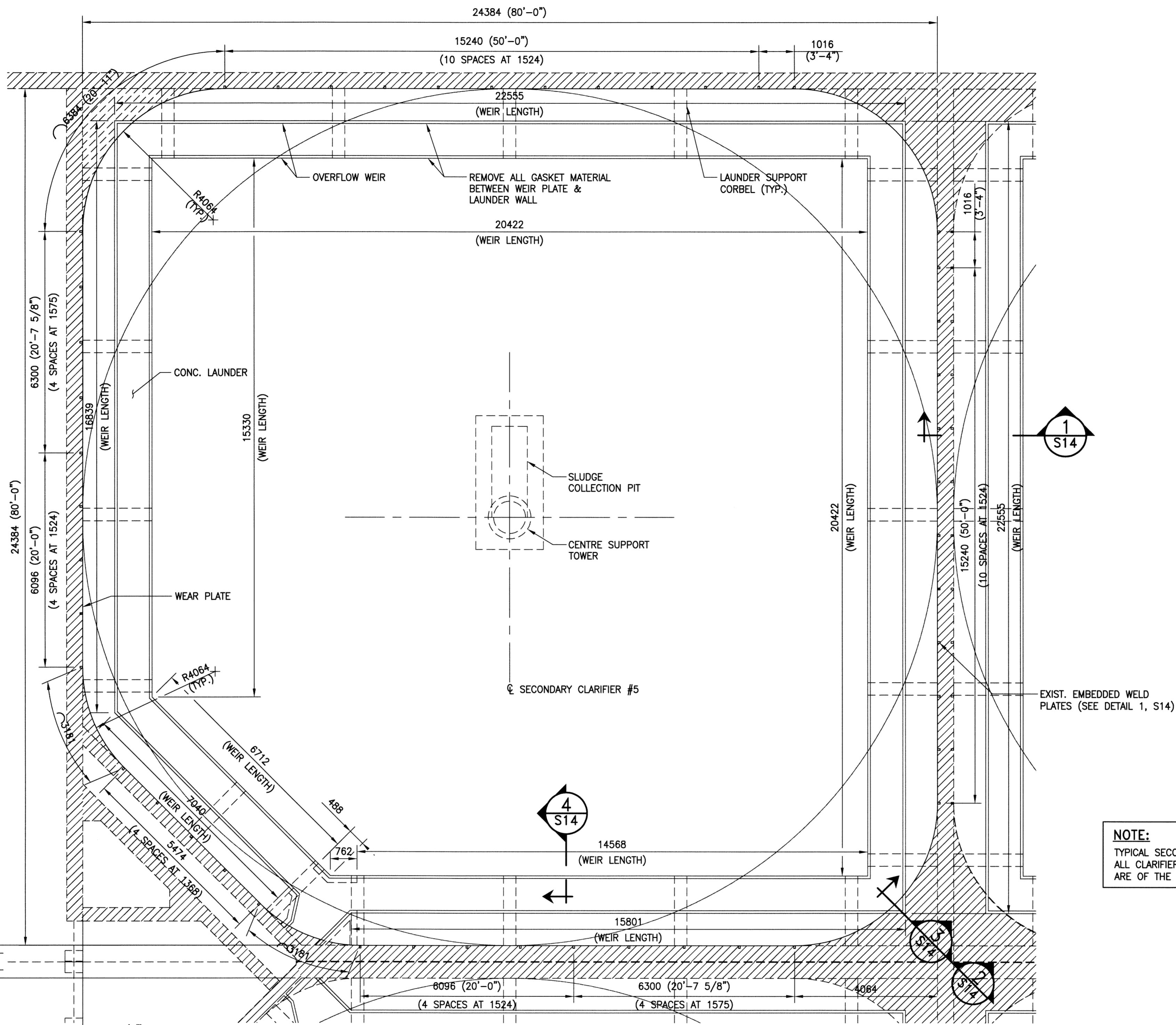


T

V

Va

28543 (93'-7 3/4")



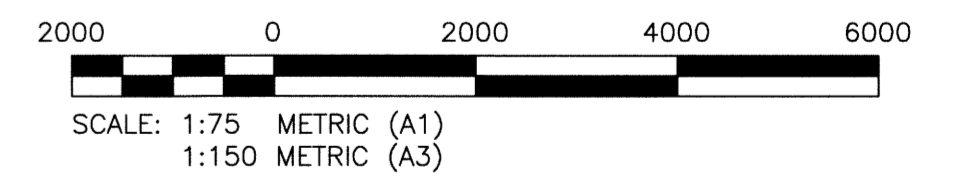
SCOPE OF WORK - SECONDARY CLARIFIER (TYPICAL)

ITEM	REF. DETAILS & DWGS.
1. REPLACE WEAR PLATE (ALL).	1,2,3,4 (DWG. S14)
2. COAT NEW WEAR PLATE.	SEE NOTE 2.5 (DWG. S12)
3. REMOVE AND REPLACE OVERFLOW WEIR PLATE (ALL).	4,5 (DWG. S14)
4. APPLY WATERPROOFING MEMBRANE TO WEIR PLATE.	4 (DWG. S14)
5. REPLACE PIVOT SUPPORT MEMBERS & COMPLETE COATING SPOT REPAIRS TO FIXED PORTION OF SLUDGE COLLECTOR.	SEE DWG. S15, S16
6. MODIFY SCUM COLLECTOR SUPPORT STEEL.	SEE DWG. S16
7. REMOVE AND REPLACE SCUM COLLECTOR STEEL ASSEMBLY.	SEE DWG. S15, S16
8. REPLACE FIXED SQUEEGEES.	SEE DWG. S15
9. REPLACE CORNER SWEEP ASSEMBLY.	SEE DWG. S15, S16
10. REPLACE COUNTERWEIGHT ASSEMBLY.	SEE DWG. S17
11. REPLACE SLUDGE COLLECTOR TENSION ROD.	SEE DWG. S16

NOTES:

1. WORK THIS DRAWING IN COMBINATION WITH THE PROJECT SPECIFICATIONS.
2. REFER TO DWG. S12 FOR GENERAL NOTES.
3. REPAIR LOCATIONS, DIMENSIONS AND QUANTITIES ARE APPROXIMATE AND ARE TO BE FIELD CONFIRMED BY THE CONTRACTOR AND APPROVED BY THE CONTRACT ADMINISTRATOR.

**NOTE:**  
TYPICAL SECONDARY CLARIFIER SHOWN. ALL CLARIFIERS ARE MIRROR IMAGES, AND ARE OF THE SAME GEOMETRY AND DIMENSIONS.

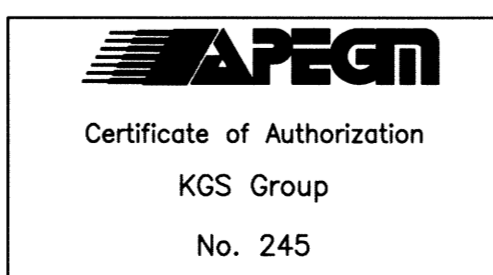


**A** PLAN - SECONDARY CLARIFIER (TYPICAL)

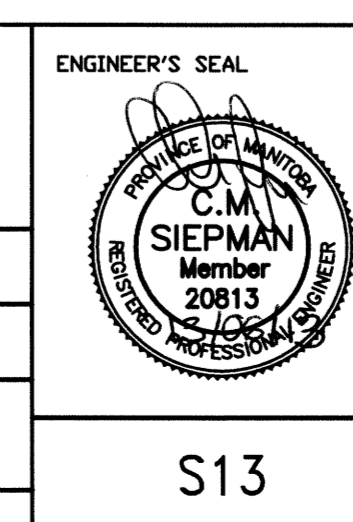
SCALE: 1:75

METRIC

WHOLE NUMBERS INDICATE MILLIMETRES  
DECIMALIZED NUMBERS INDICATE METRES



FIELD BOOK #		KGS GROUP CONSULTING ENGINEERS		ENGINEER'S SEAL	
POSTED TO LBIS		DESIGNED BY	KRD	CHECKED BY	CMS
		DRAWN BY	FBV	APPROVED BY	
		HOR. SCALE	AS NOTED	RELEASED FOR CONSTRUCTION	
		VERTICAL SCALE	AS NOTED		
0 ISSUED FOR CONSTRUCTION	13/06/13	DATE	2013 04 18	DATE	
NO. REVISIONS		DATE		DATE	



**THE CITY OF WINNIPEG**  
WATER AND WASTE DEPARTMENT

NEWPCC  
SECONDARY CLARIFIERS 1 TO 6 REHABILITATION  
**SECONDARY CLARIFIER**  
PLAN

SHEET 3 OF 9  
CITY DRAWING NUMBER  
1-0101S-S0013-001