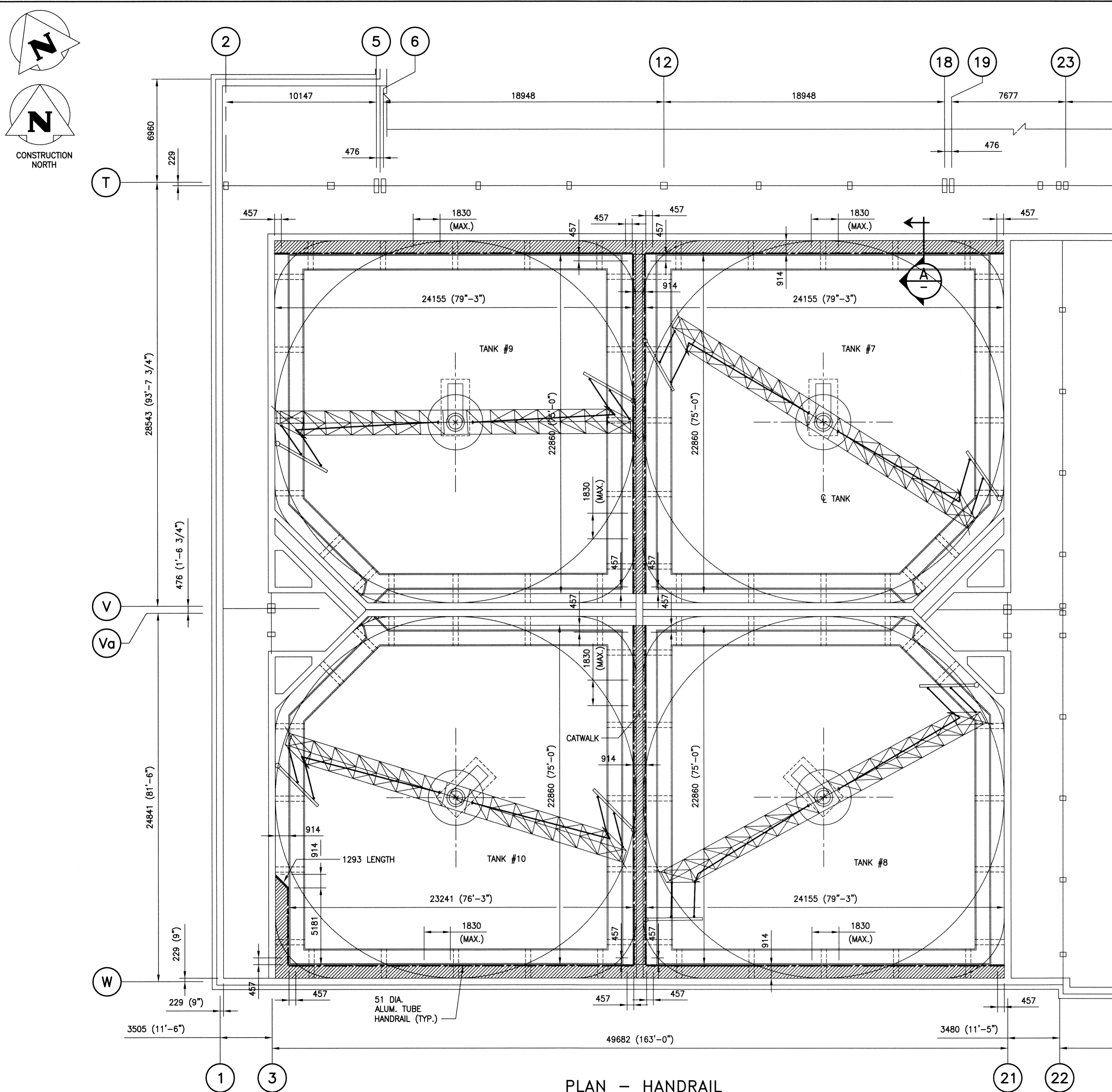


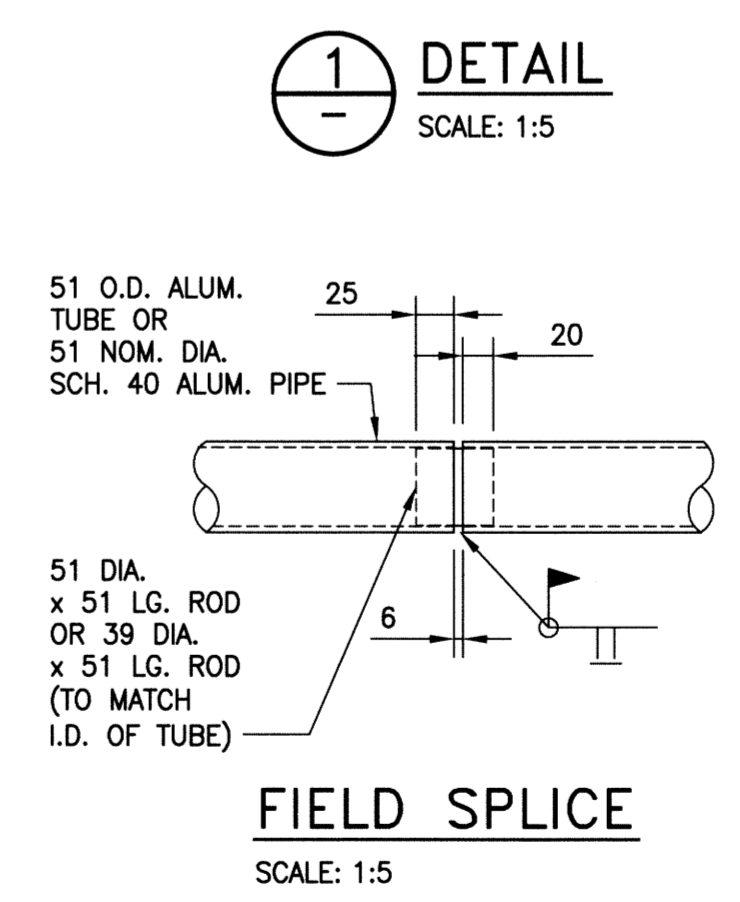
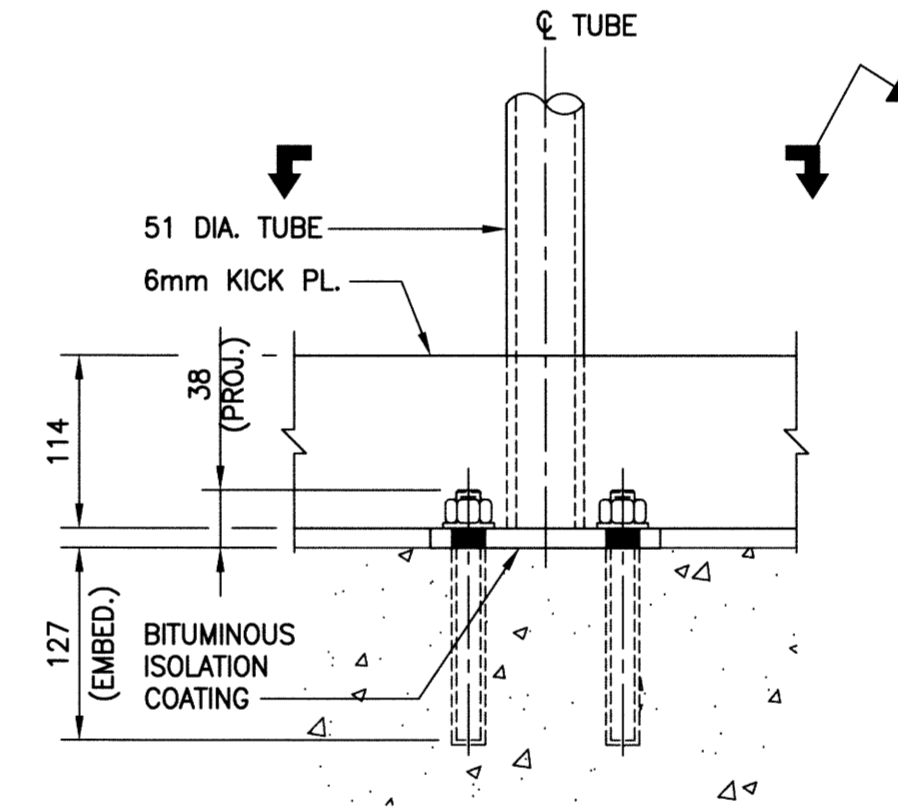
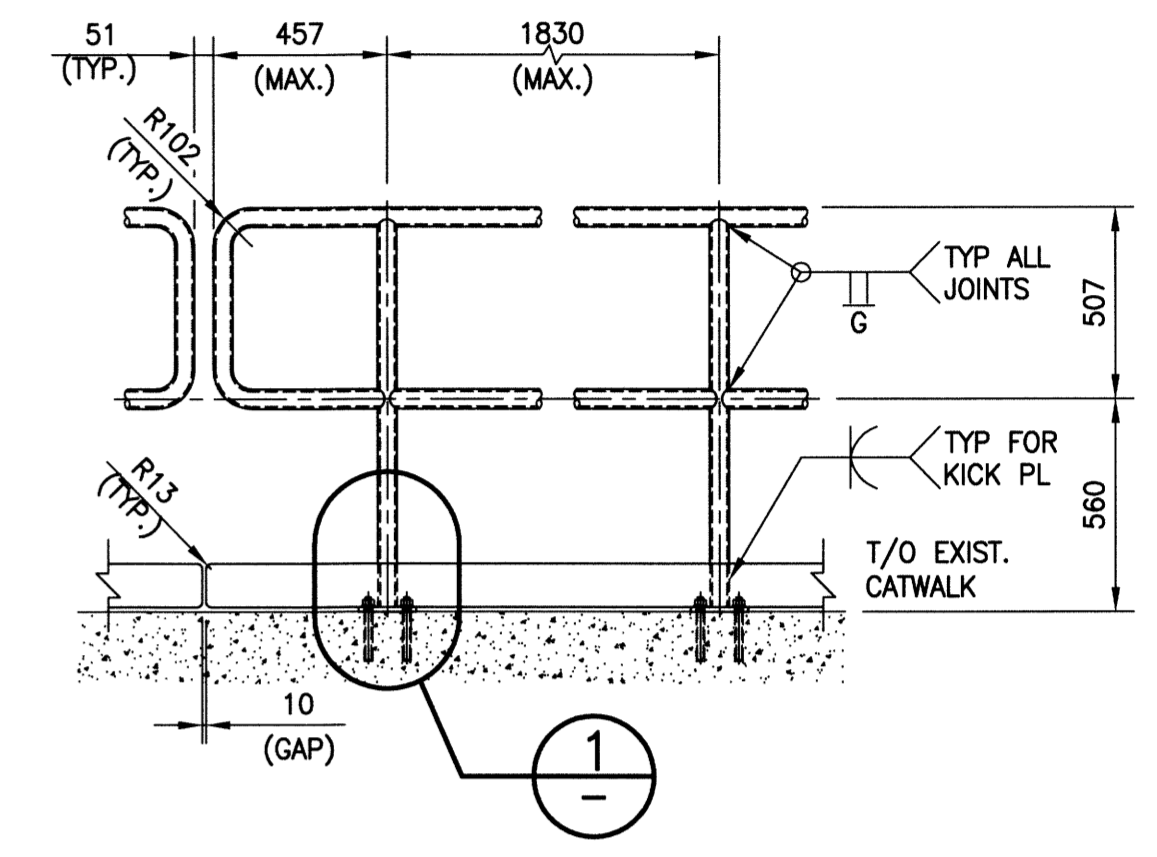
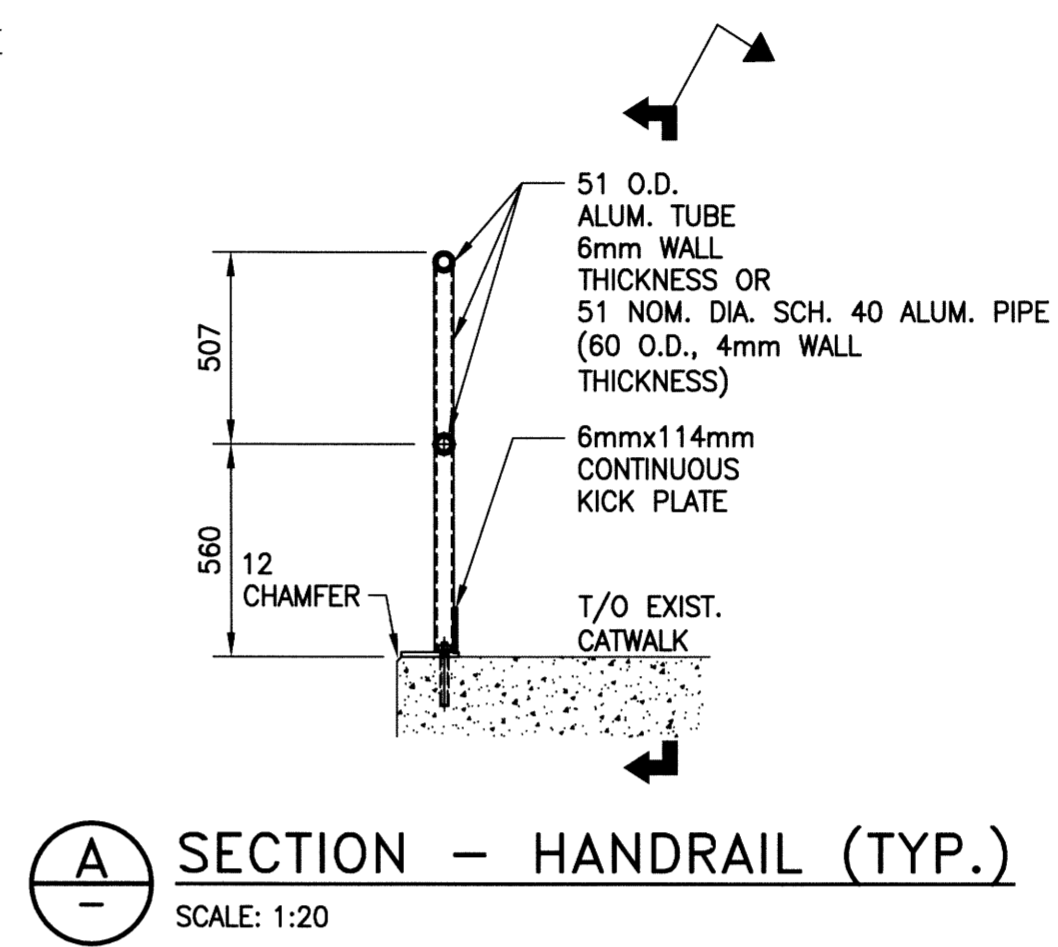
File Name: \\w-file-4\p-data\Projects\2011\11-0107-31\Doc\Control\ToBeIssued\DWG\1-0101S-S0019-001_Rev_0.dwg - Tab: S19 Plotted By: D.Deroche 06/13/2013 [Thu 2:10pm]



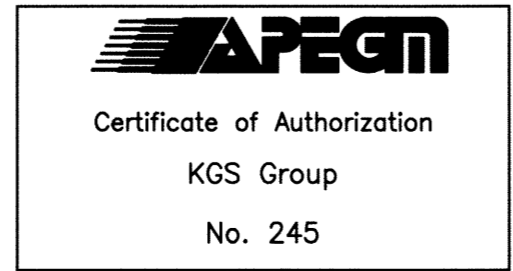
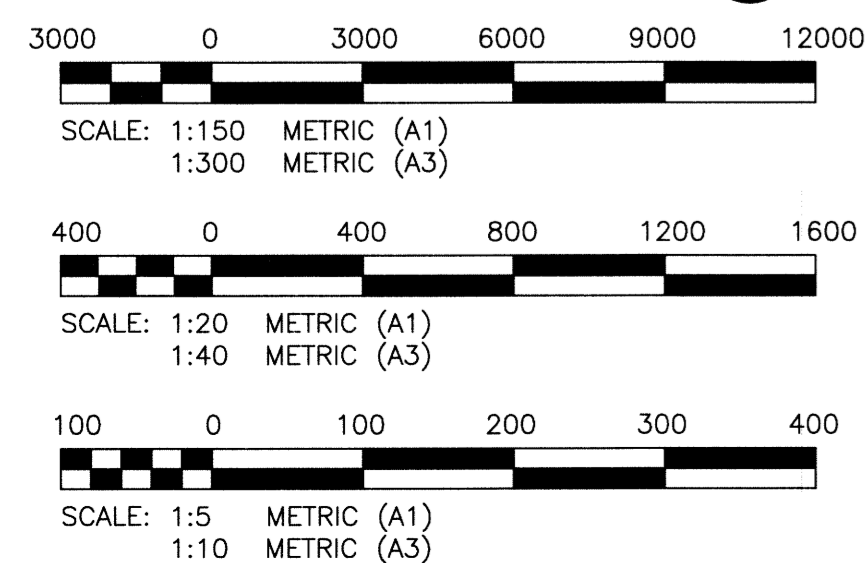
PLAN - HANDRAIL
SCALE: 1:150

HANDRAIL QUANTITIES

SECONDARY CLARIFIER #	LENGTH REQ'D. (m)
7	47.0
8	47.0
9	47.0
10	52.6

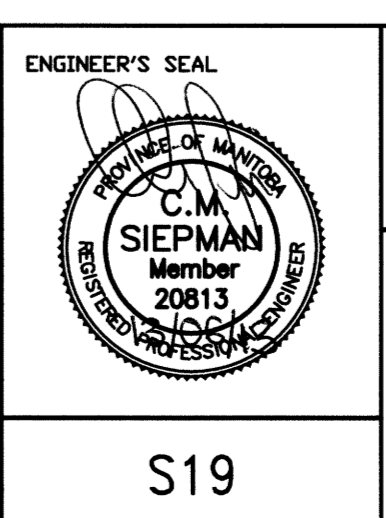


- NOTES:**
- WORK THIS DRAWING IN COMBINATION WITH THE PROJECT SPECIFICATIONS.
 - REFER TO DWG. S12 FOR GENERAL NOTES.
 - REPAIR LOCATIONS, DIMENSIONS AND QUANTITIES ARE APPROXIMATE AND ARE TO BE FIELD CONFIRMED BY THE CONTRACTOR AND APPROVED BY THE CONTRACT ADMINISTRATOR.



NO.	REVISIONS	DATE	BY
0	ISSUED FOR CONSTRUCTION	13/06/13	CMS

DESIGNED BY	KRD	CHECKED BY	CMS
DRAWN BY	FBV	APPROVED BY	
HOR. SCALE	AS NOTED	RELEASED FOR CONSTRUCTION	
VERTICAL SCALE	AS NOTED		
DATE	2013 04 18	DATE	



THE CITY OF WINNIPEG
WATER AND WASTE DEPARTMENT

NEWPCC
SECONDARY CLARIFIERS 1 TO 6 REHABILITATION
HANDRAIL
PLAN & DETAILS

SHEET 9 OF 9
CITY DRAWING NUMBER
1-0101S-S0019-001

S19

METRIC
WHOLE NUMBERS INDICATE MILLIMETRES
DECIMALIZED NUMBERS INDICATE METRES