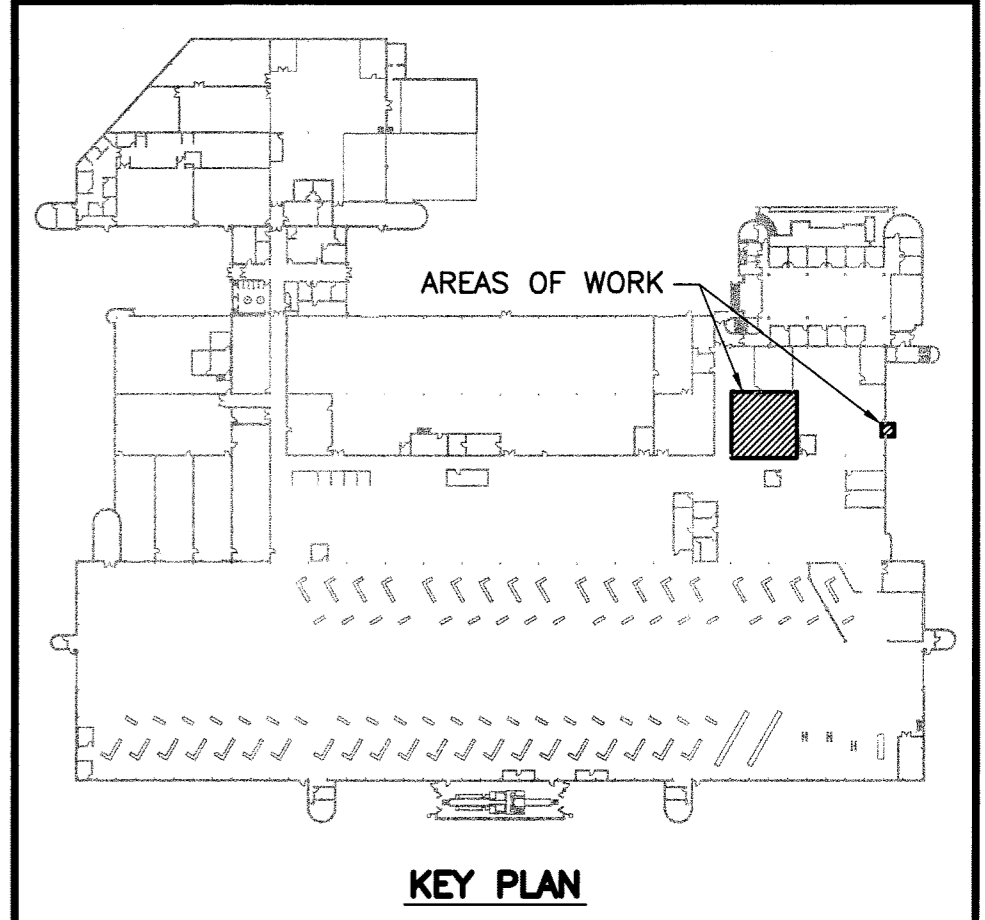
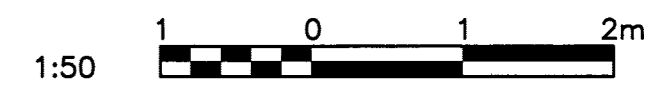


REFERENCE DRAWINGS	
NO.	DESCRIPTION

GENERAL NOTES:
 A. DO NOT SCALE DRAWINGS.
 B. CONTRACTOR SHALL CONFIRM THE LOCATION AND ROUTE OF ALL NEW AND EXISTING EQUIPMENT, PIPING AND DUCTWORK ON SITE.



NO.	DATE	DESCRIPTION	PREPARED	REVIEW	DESIGN	AUTHORIZE
00	13.06.27	ISSUED FOR CONSTRUCTION	GW	JS	GW	JS

DESIGNED BY: GW	PREPARED BY: GW	REVIEWED BY: JS
AUTHORIZED BY: [Signature]	DATE: 13.06.27	SCALE: AS NOTED

THE CONTENT OF THIS DOCUMENT IS NOT INTENDED FOR THE USE OF, NOR IS IT INTENDED TO BE RELIED UPON BY ANY PERSON, FIRM OR CORPORATION OTHER THAN THE CLIENT AND TETRA TECH WEI INC. (Tetra Tech). TETRA TECH WEI INC. (Tetra Tech) DENIES ANY LIABILITY WHATSOEVER TO OTHER PARTIES FOR DAMAGES OR INJURY SUFFERED BY SUCH THIRD PARTY ARISING FROM THE USE OF THIS DOCUMENT BY THEM, WITHOUT THE EXPRESSED WRITTEN AUTHORITY OF TETRA TECH WEI INC. (Tetra Tech) AND OUR CLIENT. THIS DOCUMENT IS SUBJECT TO FURTHER RESTRICTIONS IMPOSED BY THE CONTRACT BETWEEN THE CLIENT AND TETRA TECH WEI INC. (Tetra Tech) AND THESE PARTIES PERMISSION MUST BE SOUGHT REGARDING THIS DOCUMENT IN ALL OTHER CIRCUMSTANCES.

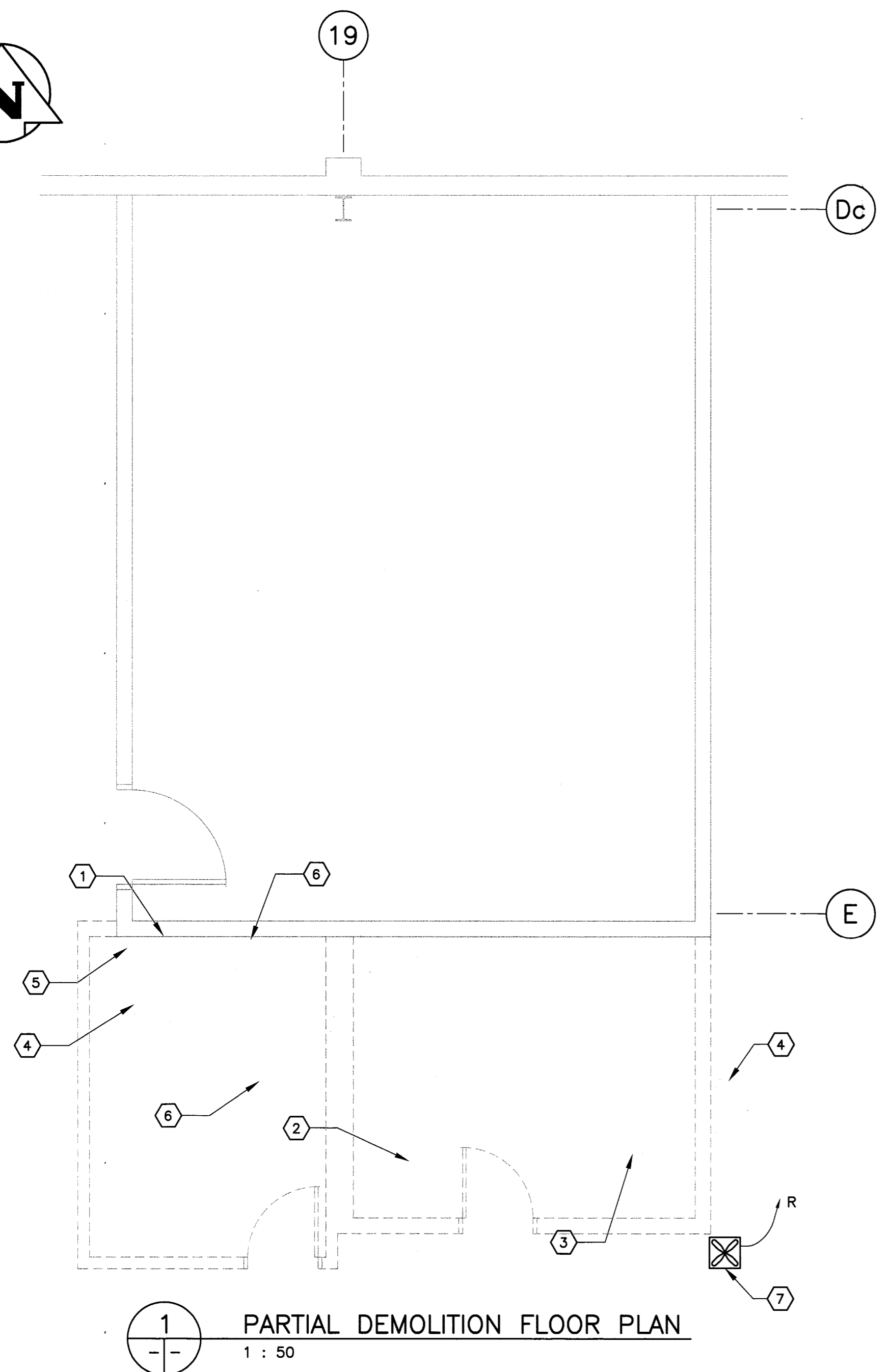
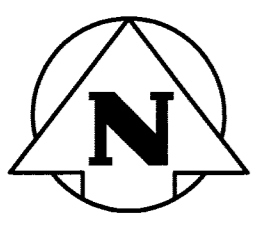
CLIENT:
**CITY OF WINNIPEG
 TRANSIT DEPARTMENT**

TETRA TECH

PROJECT NAME:
 ELECTRICAL SECTION RENOVATION AT THE WINNIPEG TRANSIT GARAGE, 421 OSBORNE STREET

DRAWING DESCRIPTION:
**PARTIAL MAIN FLOOR PLAN
 DEMOLITION AND
 NEW CONSTRUCTION**

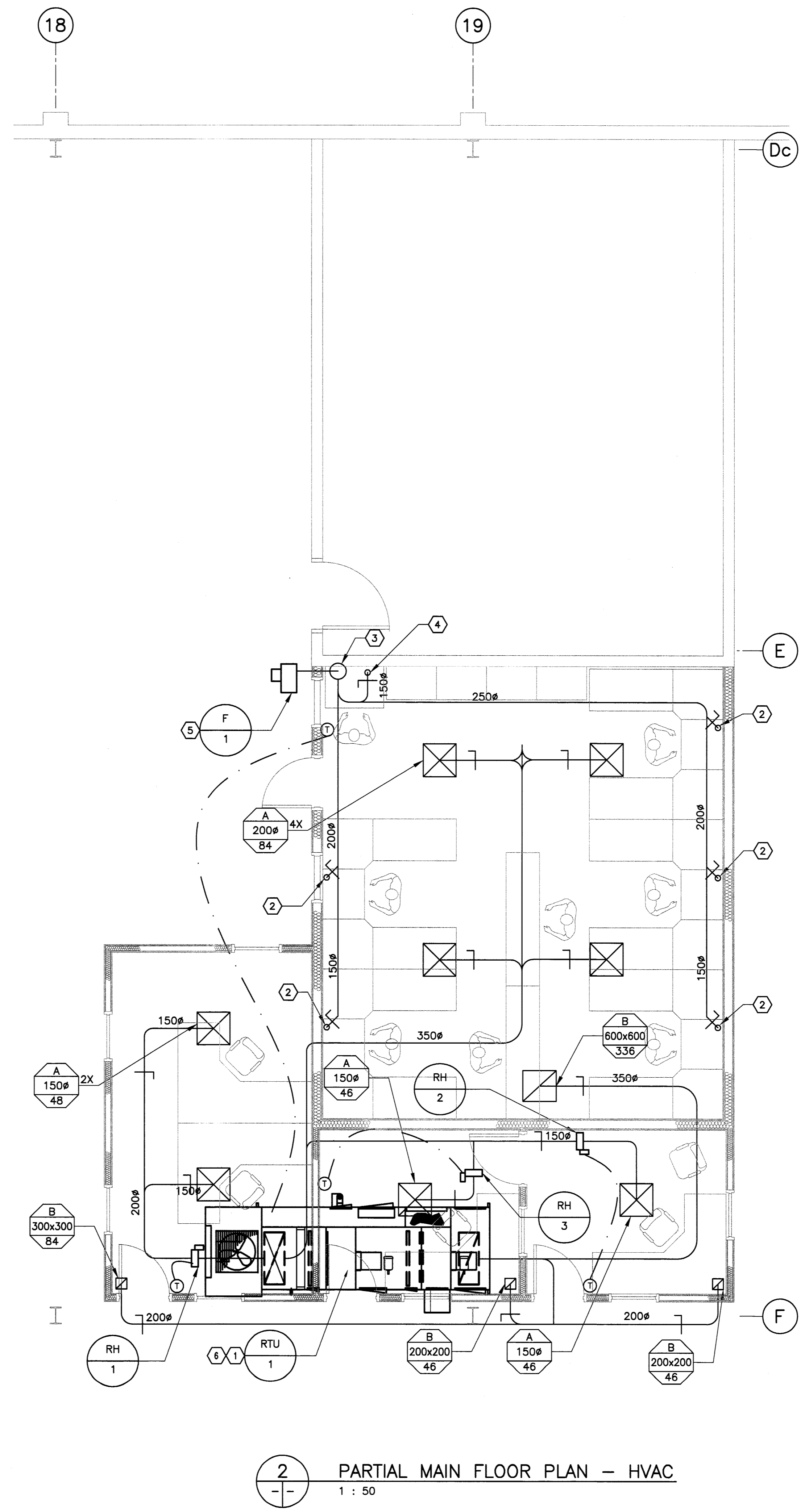
DRAWING NO: 1329720200-DWG-M0001	REV: 00
-------------------------------------	------------



1 PARTIAL DEMOLITION FLOOR PLAN
 1 : 50

- DRAWING NOTES - DEMOLITION:**
- REMOVE EXISTING AIR HANDLING UNIT AND ALL ASSOCIATED DUCTWORK. REMOVE ELECTRICAL BACK TO SOURCE. REMOVE ASSOCIATED ROOF MOUNTED AIR COOLED CONDENSING UNIT.
 - APPROXIMATE LOCATION OF COMPRESSED AIR LINE. REMOVE BRANCH/DROPS INTO EXISTING TECH ROOM. EXISTING MAIN AT HIGH LEVEL TO REMAIN TO SERVE NEW TECH ROOM WORK STATIONS.
 - EXISTING SOLDERING HOOD EXHAUST FILTRATION SYSTEM TO BE REMOVED. REMOVE EXISTING 100Ø FLEX HOSES FROM EXISTING HOODS TO FILTRATION UNIT INTAKE.
 - REMOVE EXISTING RETURN AIR DUCT.
 - REMOVE EXISTING O/A INTAKE DUCT. EXISTING ROOF OPENING TO BE REUSED FOR NEW SOLDERING FUME EXTRACTION EXHAUST SYSTEM.
 - REMOVE EXISTING SUPPLY DUCTWORK, DUCT DROPS TO EXISTING OFFICE AND TECH ROOM AND ASSOCIATED DIFFUSERS.
 - RELOCATE EXISTING CIRCULATION FAN AND CONTROLS TO AVOID INTERFERENCE WITH NEW WALL CONSTRUCTION. CONFIRM NEW LOCATION OF FAN WITH CITY PRIOR TO RELOCATING.

- DRAWING NOTES - NEW CONSTRUCTION:**
- NEW GAS-FIRED ROOF TOP UNIT. REFER TO STRUCTURAL FOR EXACT LOCATION AND ROOF PENETRATION DETAILS.
 - TYPICAL 150Ø EXHAUST DUCT UP FROM SOLDERING WORK STATION FUME HOOD. ADJUST AIR FLOW TO 145 CFM.
 - 300Ø EXHAUST DUCT UP TO ROOF MOUNTED EXHAUST FAN. MODIFY EXISTING ROOF OPENING.
 - TYPICAL 150Ø EXHAUST DUCT UP FROM SOLDERING WORK STATION FUME HOOD. ADJUST AIR FLOW TO 95 CFM.
 - NEW ROOF MOUNTED EXHAUST FAN.
 - PROVIDE NEW GAS SUPPLY PIPING AND PRESSURE REGULATOR FOR ROOF TOP UNIT. TIE-IN TO EXISTING GAS SUPPLY PIPING. CONFIRM EXACT TIE-IN LOCATION WITH THE CITY PRIOR TO INSTALLATION.



2 PARTIAL MAIN FLOOR PLAN - HVAC
 1 : 50