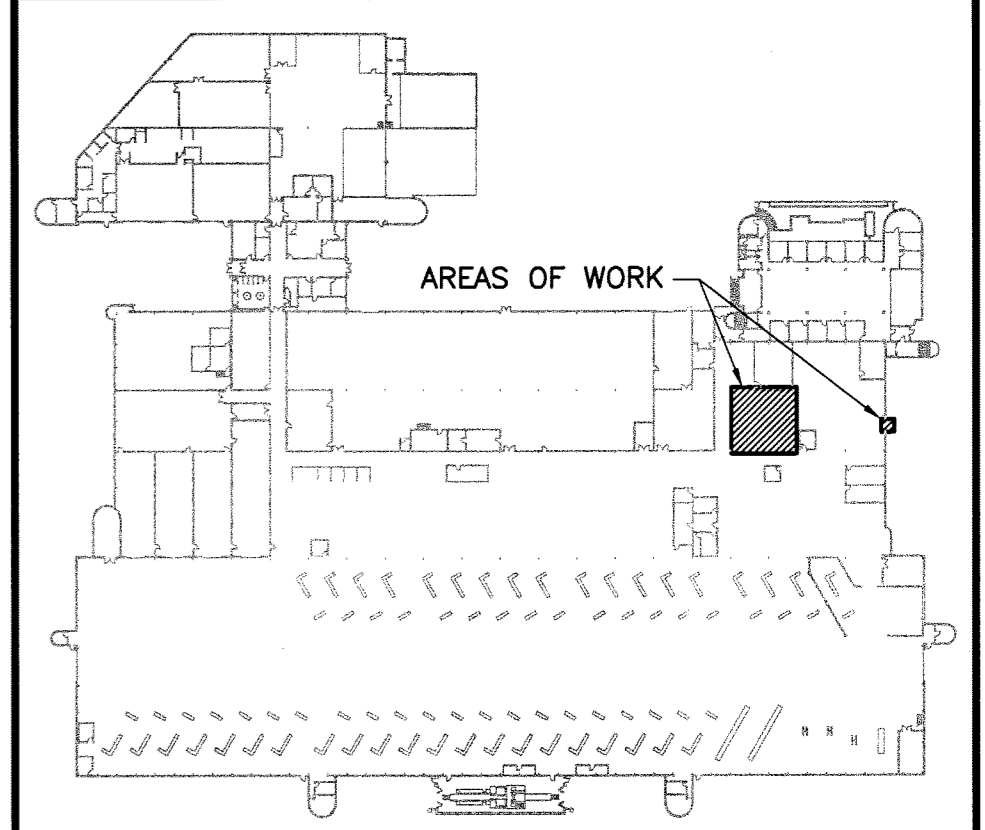
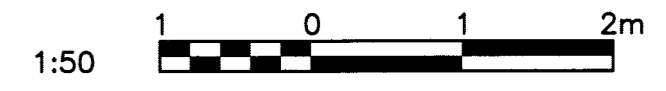


REFERENCE DRAWINGS	
NO.	DESCRIPTION

- GENERAL NOTES:**
- A. DO NOT SCALE DRAWINGS.
  - B. CONTRACTOR SHALL CONFIRM THE LOCATION AND ROUTE OF ALL NEW AND EXISTING EQUIPMENT, PIPING AND DUCTWORK ON SITE.
  - C. THE BASE-BUILDING SPRINKLER CONTRACTOR IS TROY LIFE & FIRE SAFETY LTD. CONTACT 204-783-8769. TROY LIFE & FIRE SAFETY IS TO COMPLETE THE SPRINKLER/FIRE PROTECTION WORK.



**KEY PLAN**

NO.	DATE	DESCRIPTION	PREPARED	REVIEW	DESIGN	AUTHORIZE
00	13.06.27	ISSUED FOR CONSTRUCTION	GW	JS	GW	JS

DESIGNED BY: GW	PREPARED BY: GW	REVIEWED BY: JS
AUTHORIZED BY: [Signature]	DATE: 13.06.27	SCALE: AS NOTED

THE CONTENT OF THIS DOCUMENT IS NOT INTENDED FOR THE USE OF, NOR IS IT INTENDED TO BE RELIED UPON BY ANY PERSON, FIRM OR CORPORATION OTHER THAN THE CLIENT AND TETRA TECH WEI INC. (Tetra Tech). TETRA TECH WEI INC. (Tetra Tech) DENIES ANY LIABILITY WHATSOEVER TO OTHER PARTIES FOR DAMAGES OR INJURY SUFFERED BY SUCH THIRD PARTY ARISING FROM THE USE OF THIS DOCUMENT BY THEM, WITHOUT THE EXPRESSED WRITTEN AUTHORITY OF TETRA TECH WEI INC. (Tetra Tech) AND OUR CLIENT. THIS DOCUMENT IS SUBJECT TO FURTHER RESTRICTIONS IMPOSED BY THE CONTRACT BETWEEN THE CLIENT AND TETRA TECH WEI INC. (Tetra Tech) AND THESE PARTIES PERMISSION MUST BE SOUGHT REGARDING THIS DOCUMENT IN ALL OTHER CIRCUMSTANCES.

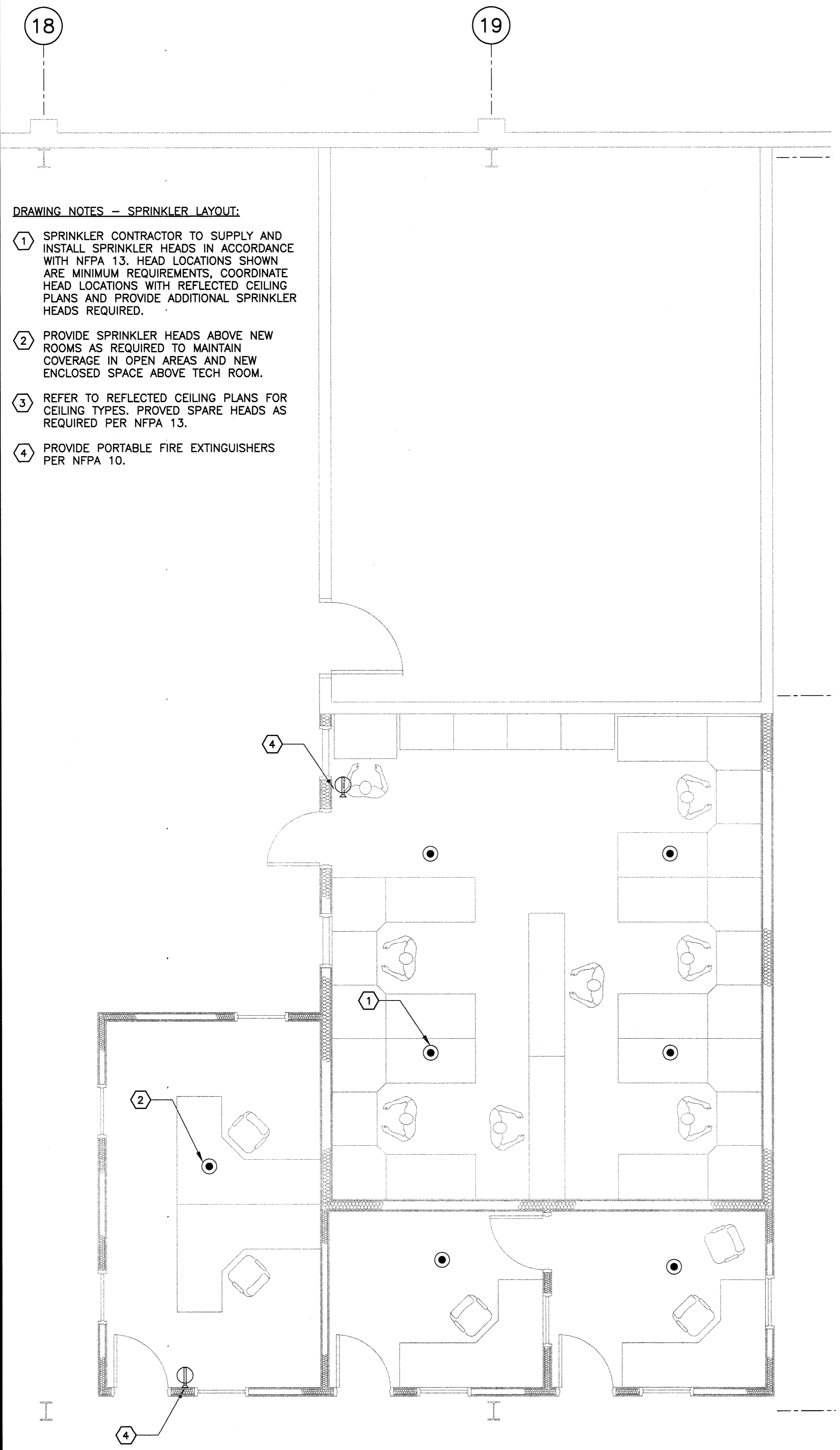
CLIENT:  
**CITY OF WINNIPEG  
TRANSIT DEPARTMENT**



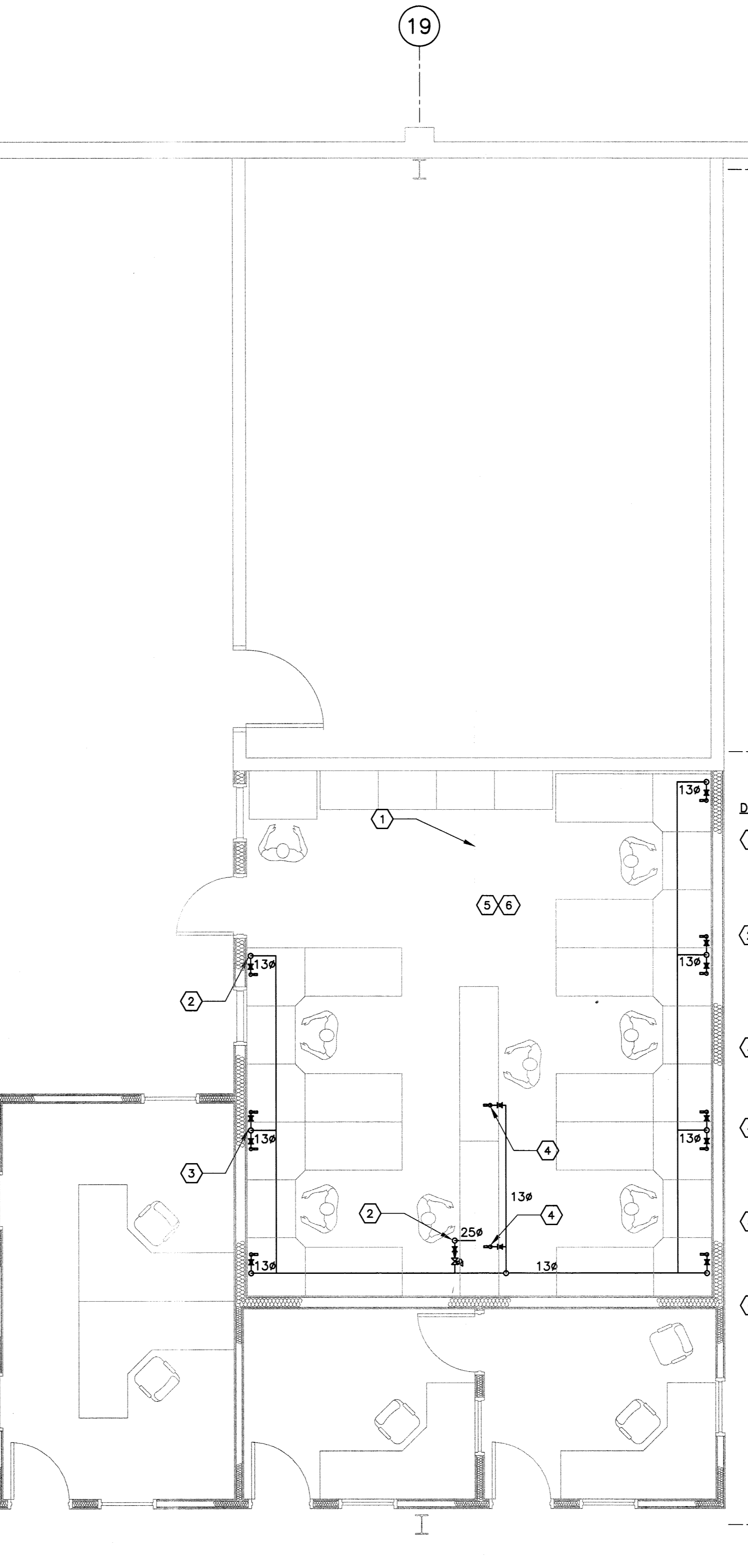
PROJECT NAME:  
ELECTRICAL SECTION RENOVATION AT THE WINNIPEG TRANSIT GARAGE, 421 OSBORNE STREET

DRAWING DESCRIPTION:  
**PARTIAL MAIN FLOOR PLAN  
COMPRESSED AIR AND  
SPRIKLER SYSTEM PIPING**

DRAWING NO: 1329720200-DWG-M0002	REV: 00
-------------------------------------	------------



- DRAWING NOTES - SPRINKLER LAYOUT:**
- 1 SPRINKLER CONTRACTOR TO SUPPLY AND INSTALL SPRINKLER HEADS IN ACCORDANCE WITH NFPA 13. HEAD LOCATIONS SHOWN ARE MINIMUM REQUIREMENTS, COORDINATE HEAD LOCATIONS WITH REFLECTED CEILING PLANS AND PROVIDE ADDITIONAL SPRINKLER HEADS REQUIRED.
  - 2 PROVIDE SPRINKLER HEADS ABOVE NEW ROOMS AS REQUIRED TO MAINTAIN COVERAGE IN OPEN AREAS AND NEW ENCLOSED SPACE ABOVE TECH ROOM.
  - 3 REFER TO REFLECTED CEILING PLANS FOR CEILING TYPES. PROVIDE SPARE HEADS AS REQUIRED PER NFPA 13.
  - 4 PROVIDE PORTABLE FIRE EXTINGUISHERS PER NFPA 10.



- DRAWING NOTES - COMPRESSED AIR:**
- 1 APPROXIMATE LOCATION OF COMPRESSED AIR LINE. REMOVE BRANCH/DROPS INTO EXISTING TECH ROOM. EXISTING MAIN AT HIGH LEVEL TO REMAIN TO SERVE NEW TECH ROOM WORK STATIONS.
  - 2 25mm COMPRESSED AIR DOWN TO HIGH LEVEL WITHIN TECH ROOM (JUST BELOW CEILING). PROVIDE PRESSURE REGULATOR C/W SHUT-OFF VALVE AT HIGH LEVEL WITHIN TECH ROOM. CONFIRM EXACT LOCATION ONSITE TO ENSURE ACCESS FOR MAINTENANCE.
  - 3 TYPICAL 13mm DROP DOWN TO WORK BENCH. PROVIDE BALL VALVE AND QUICK CONNECT FITTING AT WORK BENCH. CONFIRM QUICK CONNECT FITTING SIZE ON SITE WITH OWNER.
  - 4 13mm COMPRESSED AIR LINE AT HIGH LEVEL. PROVIDE BALL VALVE AND QUICK CONNECT FITTING FOR CONNECTION TO RETRACTABLE HOSE AIR LINE, RETRACTABLE AIR LINE SUPPLIED BY OWNER.
  - 5 PROVIDE A SEPARATE 13mm COMPRESSED AIR LINE IN TECH ROOM FOR INSTRUMENT AIR. BRANCH 6mm LINES TO CITY'S INSTRUMENT STATIONS (CONFIRM EXACT LOCATION WITH CITY).
  - 6 PROVIDE ARO 1500 SERIES PIGGYBACK FILTER/REGULATOR AND 1500 SERIES LUBRICATOR FOR EACH INSTRUMENT STATION. TO REGULATE AIR PRESSURE DOWN TO 5-6 BAR (CONTACT JASON CHUBACK AT AIR UNLIMITED AT 204-791-0660 FOR PRODUCT SUPPORT).

**1** PARTIAL MAIN FLOOR PLAN - SPRINKLER PIPING  
1 : 50

**2** PARTIAL MAIN FLOOR PLAN - COMPRESSED AIR PIPING  
1 : 50