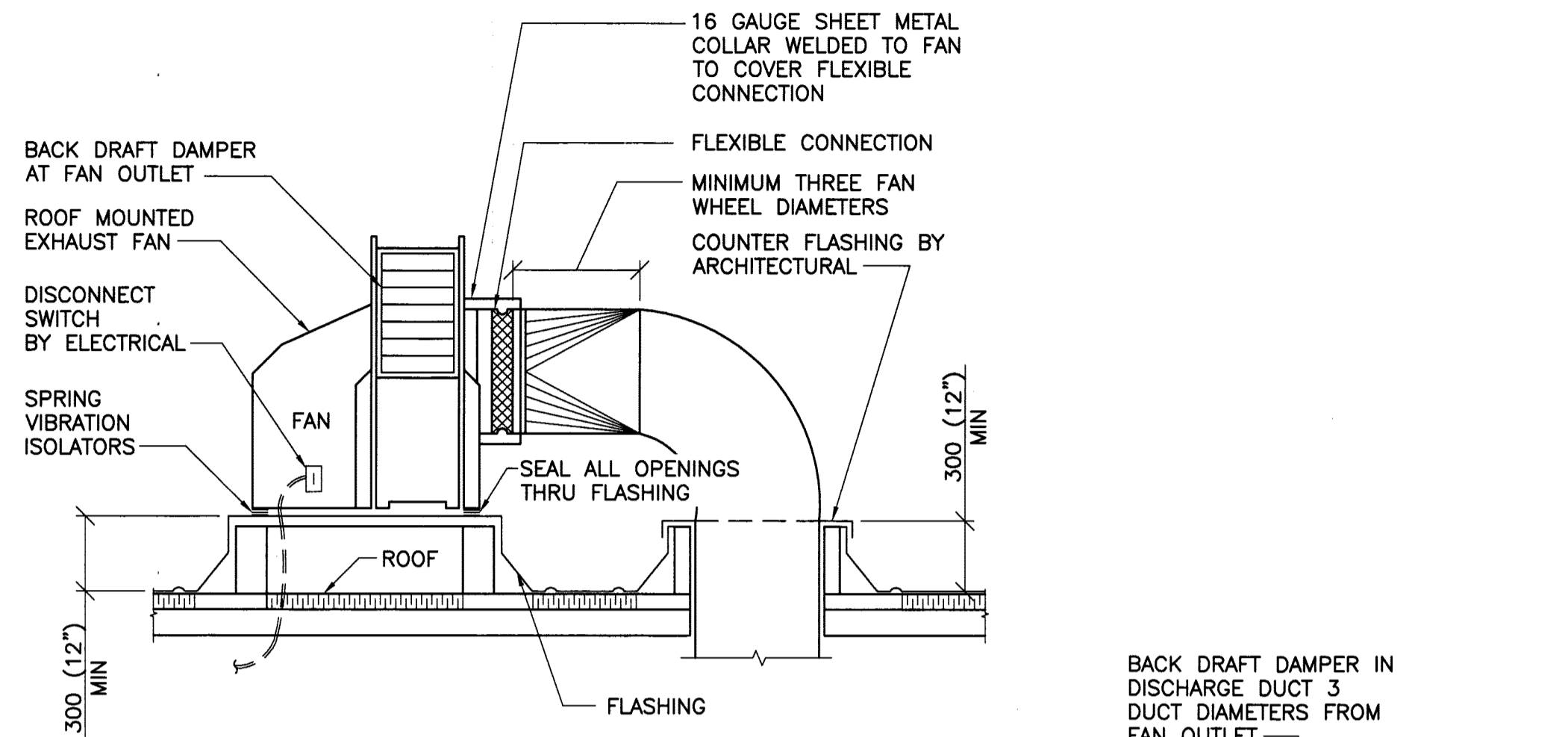


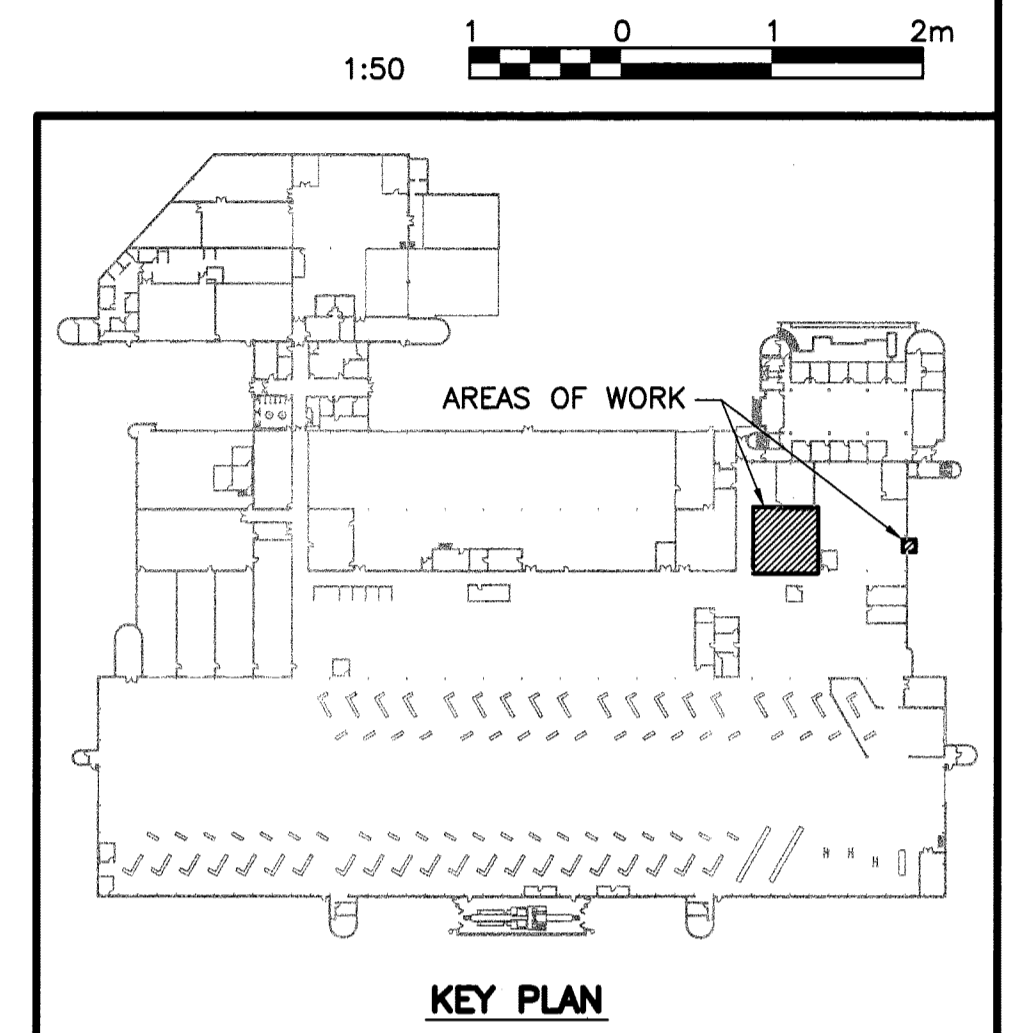
REFERENCE DRAWINGS	
NO.	DESCRIPTION



- NOTES:**
- ALL DUCTWORK EXPOSED TO OUTDOORS SHALL BE LINED WITH 25mm (1") ACOUSTIC INSULATION APPLIED AS SPECIFIED. INCREASE DUCT SIZE ACCORDINGLY. SEAL AND MAKE WATER TIGHT ALL SHEET METAL JOINTS WITH HIGH VELOCITY DUCT SEALER.
 - FOR ALL SPECIAL APPLICATIONS (I.E. KITCHEN & LAB EXHAUST) PROVIDE 25mm (1") EXTERNAL INSULATION AS SPECIFIED, ON ALL DUCTWORK EXPOSED TO THE ELEMENTS. COAT INSULATION WITH TWO APPLICATIONS OF FLINT GUARD 110-18 AS MFRG BY FLINT KOTE.

1 ROOF MOUNTED UTILITY EXHAUST FAN DETAIL
N.T.S.

ROOF TOP UNIT SCHEDULE	
EQUIPMENT TAG	RTU-1
UNIT MODEL	FW41/DJS20/O
COOLING	
Capacity Total/Sensible MBH	56.7/37.7
EDB/EWB °F	85/70.5
LDB/LWB °F [Coil]	56.3/55.9
HEATING	
Gas Furnace MBH in/output	150/120
Temperature Rise °F	99
SUPPLY FAN	
Volume CFM	1120
ESP/TSP "WC	.3/2.8
BHP/HP	1.1/1.5
Size/Type	9/9
RETURN FAN	
Volume CFM	1120
ESP/TSP "WC	.3/1.8
BHP/HP	.75/1.0
Size/Type	9/9
FILTER	
Type	MERV 7
Size	2" Pleated
POWER REQUIREMENTS	
Volts/Phase/Hertz	600/3/60
Main Feeder Ampacity (M.F.A.)	TBD
MISCELLANEOUS	
Approx. weight (lbs)	2700



DIFFUSER, REGISTER AND GRILLE SCHEDULE			
TYPE	MAKE	STYLE	FINISH
A	EH PRICE	SPD	B12
B	EH PRICE	80	B12

HEATING COIL SCHEDULE						
TAG	Location served	EAT °C	LAT °C	FLOW L/s	Total Output KW	Comments
1	102	20.0	68	85	0.7	Room thermostat to cycle reheat coil to maintain space temperature
2	103	20.0	68	45	0.4	Room thermostat to cycle reheat coil to maintain space temperature
3	104	20.0	68	45	0.4	Room thermostat to cycle reheat coil to maintain space temperature

FAN SCHEDULE										
TAG	SERVICE	FAN TYPE	LOCATION	FAN MODEL	CAP. (l/s) cfm	E.S.P. (Pa) in. W.G.	SPD. (rpm)	BkW BHP	MTR. (kW) HP	REMARKS
F-1	Soldering Booth Exhaust	Cook	Roof	CPA-A	387 820	250 1.00	1314	0.22 0.30	0.37 0.50	Fan to be AMCA 'A' spark resistant construction

NO.	DATE	DISCUSSION	PREPARED	REVIEW	DESIGN	AUTHORIZE
00	13.06.27	ISSUED FOR CONSTRUCTION	GW	JS	GW	JS

PROVINCE OF MANITOBA
J.S. SANDHU
REGISTERED PROFESSIONAL ENGINEER
Member 22107

APEGM
Certificate of Authorization
TETRA TECH WEI Inc.
No. 5313 Date: April 30, 2014

DESIGNED BY: GW	PREPARED BY: GW	REVIEWED BY: JS
AUTHORIZED BY: JS	DATE: 13.06.27	SCALE: AS NOTED

THE CONTENT OF THIS DOCUMENT IS NOT INTENDED FOR THE USE OF, NOR IS IT INTENDED TO BE RELIED UPON BY ANY PERSON, FIRM OR CORPORATION OTHER THAN THE CLIENT AND TETRA TECH WEI Inc. (Tetra Tech). TETRA TECH WEI Inc. (Tetra Tech) DENIES ANY LIABILITY WHATSOEVER TO OTHER PARTIES FOR DAMAGES OR INJURY SUFFERED BY SUCH THIRD PARTY ARISING FROM THE USE OF THIS DOCUMENT BY THEM, WITHOUT THE EXPRESSED WRITTEN AUTHORITY OF TETRA TECH WEI Inc. (Tetra Tech) AND OUR CLIENT. THIS DOCUMENT IS SUBJECT TO FURTHER RESTRICTIONS IMPOSED BY THE CONTRACT BETWEEN THE CLIENT AND TETRA TECH WEI Inc. (Tetra Tech) AND THESE PARTIES PERMISSION MUST BE SOUGHT REGARDING THIS DOCUMENT IN ALL OTHER CIRCUMSTANCES.

CLIENT:
**CITY OF WINNIPEG
TRANSIT DEPARTMENT**



PROJECT NAME:
ELECTRICAL SECTION RENOVATION AT THE WINNIPEG TRANSIT GARAGE, 421 OSBORNE STREET

DRAWING DESCRIPTION:
**MECHANICAL
SCHEDULES AND DETAILS**

DRAWING NO. 1329720200-DWG-M0004	REV. 00
-------------------------------------	------------