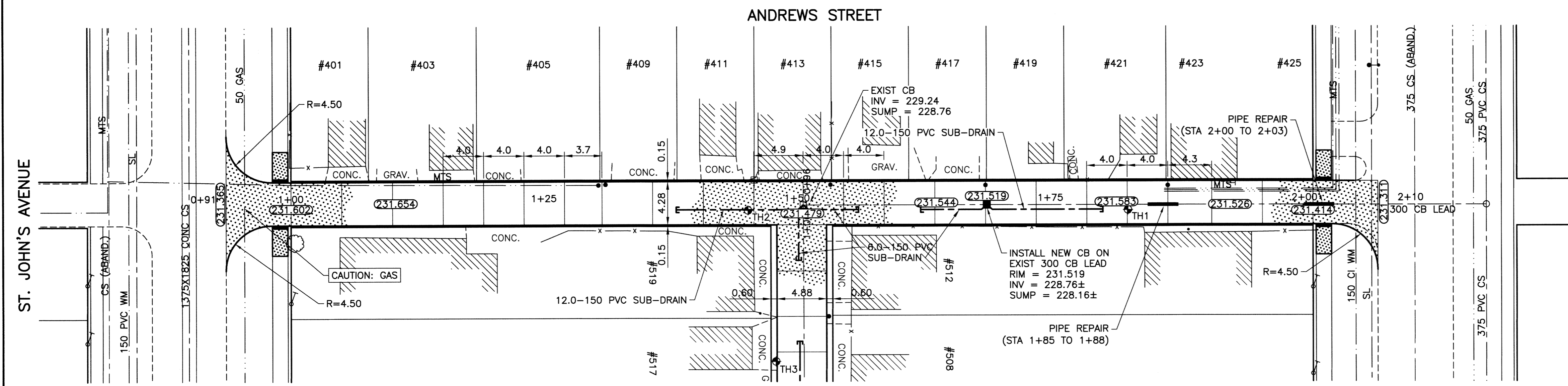
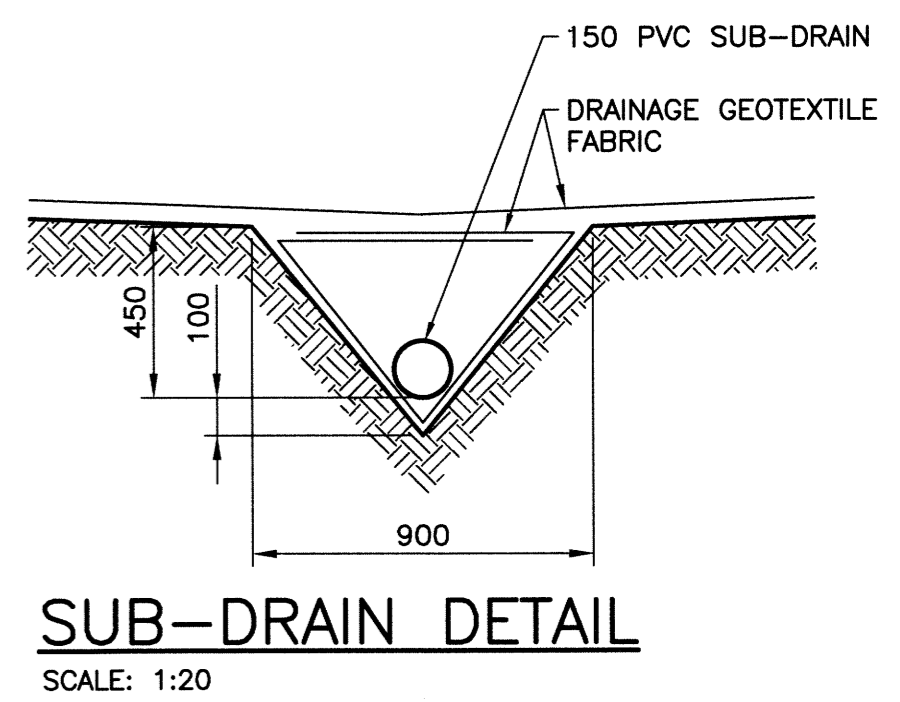
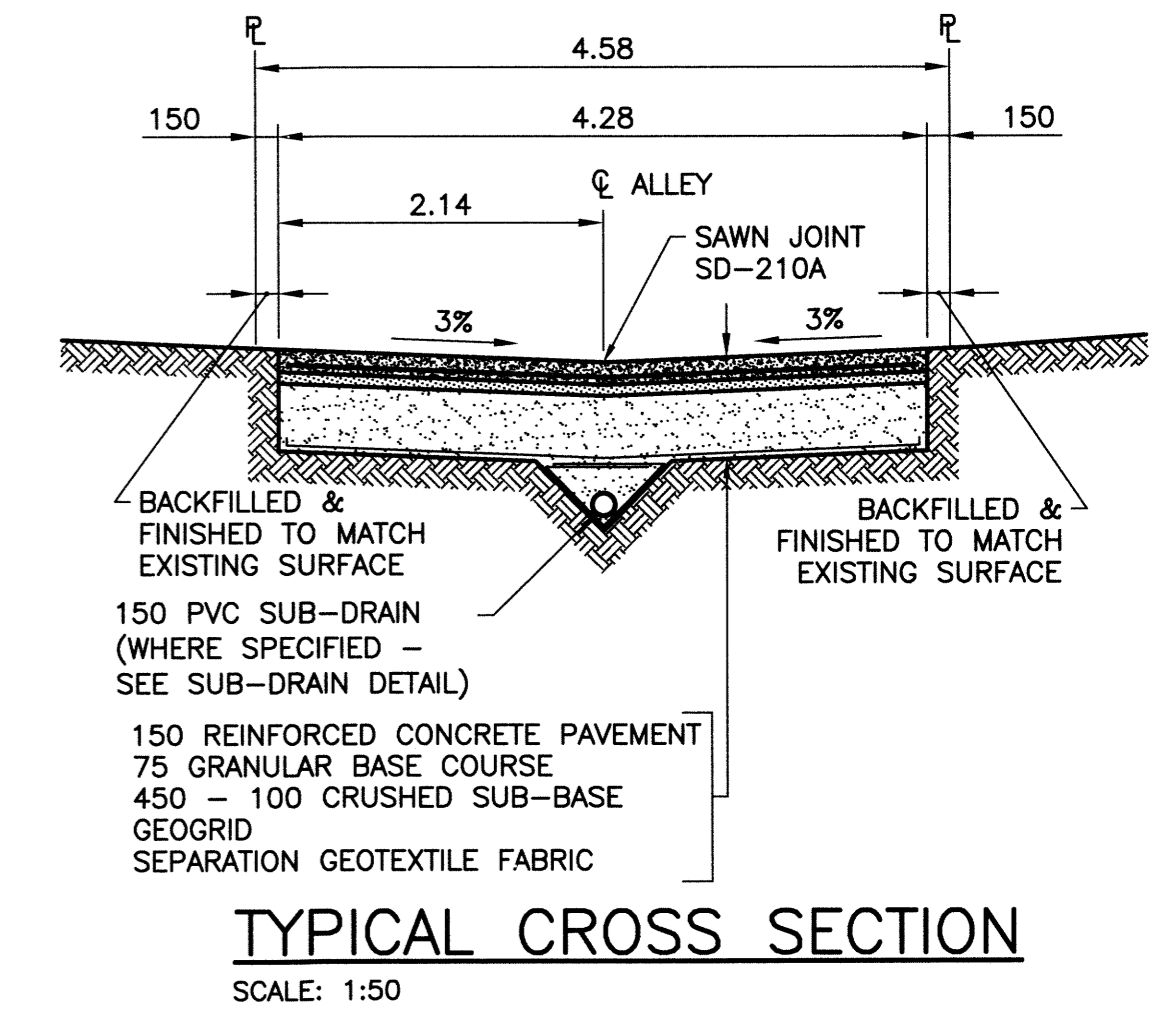
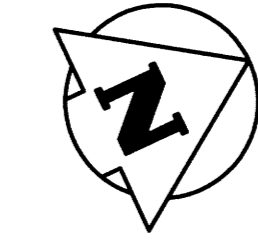


ALLEY PAVEMENT PROFILE
SCALE: 1:250 HOR
1:10 VER



ALLEY PAVEMENT PLAN
SCALE: 1:250 HOR



- NOTES:**
1. STATION CHAINAGE IS BASED ON CENTERLINE OF ALLEY RIGHT OF WAY.
 2. ADJUST MH AND CB RIMS TO NEW GRADES.
 3. PLUG SUB-DRAINS AT TERMINAL ENDS.
 4. REGRADE EXISTING PRIVATE SIDEWALKS AS REQUIRED.
 5. INSTALLATION OF LIP CURBS AND THEIR EXTENTS TO BE DETERMINED BY THE CONTRACT ADMINISTRATOR.
 6. LIGHT STANDARDS, HYDRO POLES AND ANCHORS MAY REQUIRE TEMPORARY SUPPORT/REMOVAL OR REPLACEMENT AT THE CONTRACTOR'S EXPENSE.
 7. ISOLATE ALL POLES, BASES AND PILES WITHIN ALLEY RIGHT OF WAY (SD-228C)
 8. AVOID DAMAGE TO EXISTING TREES WITHIN THE LIMITS OF CONSTRUCTION.

WARNING
NOTIFY THE GAS COMPANY OF THE PROPOSED LOCATION OF EXCAVATION. TAKE PRECAUTION TO AVOID DAMAGE TO GAS COMPANY INSTALLATIONS. SEE PROVINCIAL REGULATION 210/72 FOR DETAILS.

METRIC
WHOLE NUMBERS INDICATE MILLIMETRES
DECIMALIZED NUMBERS INDICATE METRES

PROPERTY LIMITS DELINEATION
DELINEATION OF PROPERTY LIMITS AS SHOWN ON THIS DWG DOES NOT REPRESENT A "LEGAL SURVEY". KGS GROUP MAKES NO REPRESENTATION OR WARRANTY AS TO THE ACCURACY OF PROPERTY LIMITS DELINEATED ON THIS DWG, NOR ON THE DIMENSIONAL ACCURACY OF DWG FEATURES RELATIVE TO THOSE PROPERTY LIMITS.



300 LBS	LAND DRAINAGE SEWER	300 LBS					
250 WWS	WASTE WATER SEWER	250 WWS	+	TEST HOLE			
	GAS		T	GUY WIRE			
	HYDRO		—	LIGHT STANDARD			
	M.T.S.		—	BACK OF CURB			
150 WM	WATERMAIN	150 WM	—	CONCRETE			
	HYDRANT		+	ASPHALT			
	VALVE		+	SIDEWALK			
	MANHOLE		○	PROPERTY LINE			
	CATCH BASIN		□	SURVEY BAR			
	CURB INLET		▽	GEODETIC BENCHMARK			
	POLES T-MTS		•	ELEVATION	231.334	TTTT	
	POLES H-HYDRO		•				
EXISTING	LEGEND-PLAN	PROPOSED	EXISTING	LEGEND-PLAN	PROPOSED	EXISTING	LEGEND-PROFILE

LOCATION APPROVED UNDERGROUND STRUCTURES

B.M. 26-028 ELEV. 231.451 N.W. Cor. Mountain Ave. & Powers St., Brass plug in 13.7m Conc. pile, 2.3m E. of W.L. of Powers St. & 0.1m N. of N.L. of Mountain Ave.

NOTE: LOCATION OF UNDERGROUND STRUCTURES AS SHOWN ARE BASED ON THE BEST INFORMATION AVAILABLE BUT NO GUARANTEE IS GIVEN THAT ALL EXISTING UTILITIES ARE SHOWN OR THAT THE GIVEN LOCATIONS ARE EXACT. CONFIRMATION OF EXISTENCE AND EXACT LOCATION OF ALL SERVICES MUST BE OBTAINED FROM THE INDIVIDUAL UTILITIES BEFORE PROCEEDING WITH CONSTRUCTION.

KGS GROUP CONSULTING ENGINEERS

DESIGNED BY: RBO
DRAWN BY: GEL
CHECKED BY: CR
APPROVED BY: [Signature]
HOR. SCALE: 1:250
VERTICAL: 1:50
ISSUED FOR TENDER: 13/06/25
DATE: 13/06/12

THE CITY OF WINNIPEG PUBLIC WORKS DEPARTMENT TRANSPORTATION ENGINEERING DIVISION

PROJECT TITLE: 2013 ALLEY RENEWAL PROGRAM CONTRACT 1
SHEET OF: 01 OF 16
COMPUTER FILE NAME: 13-0107-007_CALL
CITY DRAWING NUMBER: 0001

CONSULTANT DRAWING NO. 13-0107-007_C01

P:\Projects\2013\13-0107-007\Doc\Control\Tobias\DWG\13-0107-007_C01-Rev_0.dwg - Tab: 01 Plotted By: Clueman 06/19/2013 [Wed 7:06am] PLOT: 1:1 A-1