

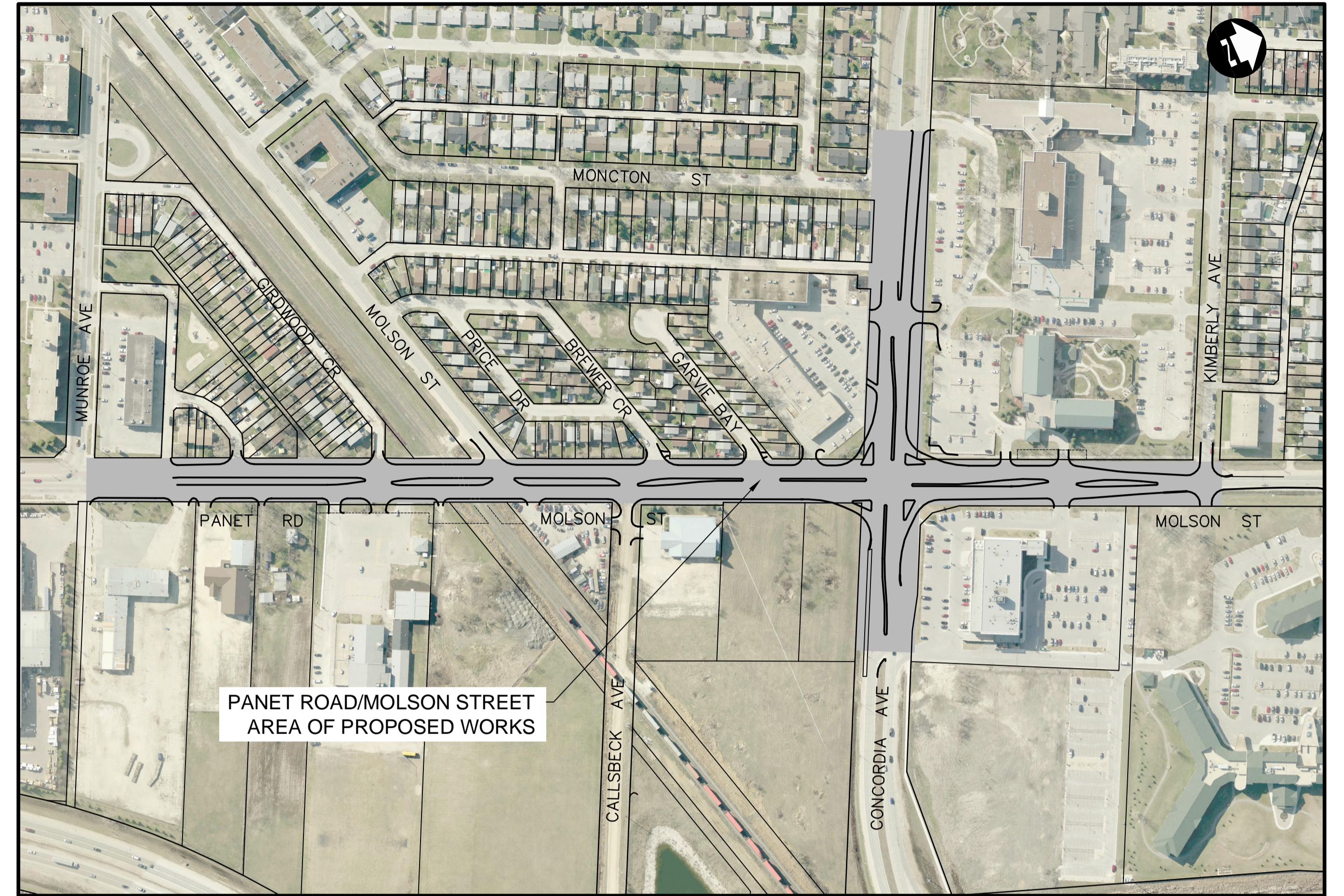


CITY OF WINNIPEG

PUBLIC WORKS DEPARTMENT

PANET ROAD/MOLSON STREET - MUNROE AVENUE TO KIMBERLY AVENUE RECONSTRUCTION AND TWINNING TO FOUR LANE DIVIDED

BID OPPORTUNITY # 554-2013



LOCATION PLAN

DRAWING LIST

CITY # NO.	TITLE	SHEET NO.	TITLE	SHEET NO.	TITLE
3350-01	COVER SHEET	3350-17	PLAN-PROFILE - PANET-MOLSON - STA. 0+245 TO 0+340 (NORTHBOUND) (4P-3958)	3350-33	DETAILS (2 OF 2) (DET-3760)
3350-02	GENERAL ARRANGEMENT (4X-896)	3350-18	PLAN-PROFILE - PANET-MOLSON - STA. 0+245 TO 0+340 (SOUTHBOUND) (4P-3959)	3350-34	LDS - PANET-MOLSON (1 OF 3) (4S-2720)
3350-03	REMOVALS - PANET-MOLSON (1 OF 5) (4X-897)	3350-19	PLAN-PROFILE - PANET-MOLSON - STA. 0+340 TO 0+525 (4P-3960)	3350-35	LDS - PANET-MOLSON (2 OF 3) (4S-2721)
3350-04	REMOVALS - PANET-MOLSON (2 OF 5) (4X-898)	3350-20	PLAN-PROFILE - PANET-MOLSON - STA. 0+525 TO 0+680 (4P-3961)	3350-36	LDS - PANET-MOLSON (3 OF 3) (4S-2722)
3350-05	REMOVALS - PANET-MOLSON (3 OF 5) (4X-899)	3350-21	PLAN-PROFILE - PANET-MOLSON - STA. 0+680 TO 0+835 (4P-3962)	3350-37	LDS - CALLSBECK (1 OF 3) (4S-2723)
3350-06	REMOVALS - PANET-MOLSON (4 OF 5) (4X-900)	3350-22	PLAN-PROFILE - PANET-MOLSON - STA. 0+835 TO 0+920 (4P-3963)	3350-38	LDS - CALLSBECK (2 OF 3) (4S-2724)
3350-07	REMOVALS - PANET-MOLSON (5 OF 5) (4X-901)	3350-23	PLAN-PROFILE - CONCORDIA - STA. 2+005 TO 2+160 (4P-3964)	3350-39	LDS - CALLSBECK (3 OF 3) (4S-2725)
3350-08	REMOVALS - CONCORDIA-WEST (1 OF 2) (4X-902)	3350-24	PLAN-PROFILE - CONCORDIA - STA. 2+160 TO 2+315 (4P-3965)	3350-40	CONCRETE JOINT LAYOUT (1 OF 6) (DET-3761)
3350-09	REMOVALS - CONCORDIA-WEST (2 OF 2) (4X-903)	3350-25	PLAN-PROFILE - CONCORDIA - STA. 2+315 TO 2+470 (4P-3966)	3350-41	CONCRETE JOINT LAYOUT (2 OF 6) (DET-3762)
3350-10	REMOVALS - CONCORDIA-EAST (4X-904)	3350-26	CALLSBECK AVENUE (4P-3967)	3350-42	CONCRETE JOINT LAYOUT (3 OF 6) (DET-3763)
3350-11	CONSTRUCTION-TRAFFIC STAGING - STAGE 1 (4X-905)	3350-27	SECTIONS (1 OF 5) (DET-3754)	3350-43	CONCRETE JOINT LAYOUT (4 OF 6) (DET-3764)
3350-12	CONSTRUCTION-TRAFFIC STAGING - STAGE 2 (4X-906)	3350-28	SECTIONS (2 OF 5) (DET-3755)	3350-44	CONCRETE JOINT LAYOUT (5 OF 6) (DET-3765)
3350-13	CONSTRUCTION-TRAFFIC STAGING - STAGE 3 (4X-907)	3350-29	SECTIONS (3 OF 5) (DET-3756)	3350-45	CONCRETE JOINT LAYOUT (6 OF 6) (DET-3766)
3350-14	COORDINATE GEOMETRY - PANET-MOLSON (DET-3752)	3350-30	SECTIONS (4 OF 5) (DET-3757)		
3350-15	COORDINATE GEOMETRY - CONCORDIA (DET-3753)	3350-31	SECTIONS (5 OF 5) (DET-3758)		
3350-16	PLAN-PROFILE - PANET-MOLSON - STA. 0+155 TO 0+245 (4P-3957)	3350-32	DETAILS (1 OF 2) (DET-3759)		



RELEASED FOR CONSTRUCTION

DATE

SET NO. _____