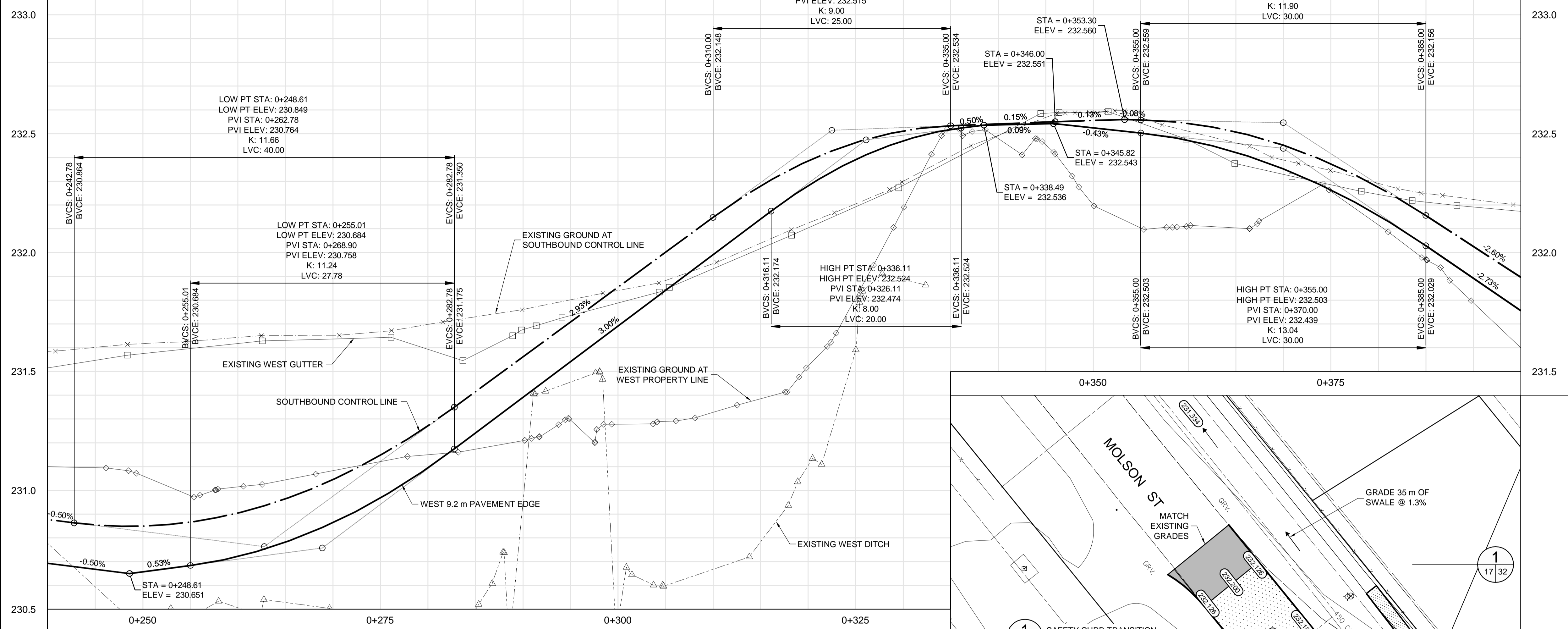


SOUTHBOUND



- CONSTRUCTION NOTES:**
- ALL DIMENSIONS ARE TO BACK OF CURB.
 - ISOLATE MISCELLANEOUS ITEMS IN NEW CONCRETE WORKS AS PER SD-228C.
 - LEGAL PLAN AND UNDERGROUND INFORMATION FROM CITY OF WINNIPEG LBIS.
 - CONTRACTOR TO TAKE PRECAUTIONARY STEPS TO AVOID DAMAGE FROM CONSTRUCTION ACTIVITIES TO TREES WITHIN THE LIMITS OF CONSTRUCTION.
 - LOCATION OF EXISTING SERVICES TO BE CONFIRMED IN THE FIELD BY THE CONTRACTOR.
 - CB LEADS TO BE INSTALLED AT MIN. 1.0% SLOPE OR AS DIRECTED BY CONTRACT ADMINISTRATOR.
 - ADJUST EXISTING CATCH BASINS AND MANHOLES AND ISOLATE AS PER SD-220A.
 - PROTECT EXISTING LEGAL PINS IN NEW PAVEMENT UTILIZING A WATER VALVE INSERT. GRIND OFF SYMBOL ON COVER.
 - SEE P-3350-27 THROUGH 31 FOR TYPICAL CROSS-SECTIONS.
 - CONTRACTOR SHALL INSTALL MODIFIED BARRIER CURB (SD-203B) ON ALL PRIVATE APPROACH AND PUBLIC APPROACH RADII AS IDENTIFIED BY THE CONTRACT ADMINISTRATOR.
 - CONTRACTOR SHALL CONSTRUCT BARRIER CURB INTEGRAL WITH CONCRETE SLAB (SD-204) AND SEPARATE CONCRETE SPLASH STRIP (SD-223B) ON ALL SECTIONS OF ROADWAY WHERE THE CURB IS PARALLEL TO THE ROADWAY BASELINE GEOMETRY.
 - CONCRETE PAVEMENT IN MINOR STREET APPROACHES, PRIVATE APPROACHES AND MEDIAN OPENINGS SHALL BE HAND PLACED WITH INTEGRAL CURB CONSTRUCTION (SD-203A OR SD-203B AS SPECIFIED). MAIN LINE CONCRETE PAVEMENT SHALL BE SLIP FORMED UNLESS OTHERWISE REQUIRED DUE TO TRAFFIC STAGING RESTRICTIONS.
 - INSTALL 150 mm SUB DRAIN IN BOTH DIRECTIONS OF CATCH BASINS ALONG PAVEMENT EDGE AS PER SD-245 AND CAP ENDS.

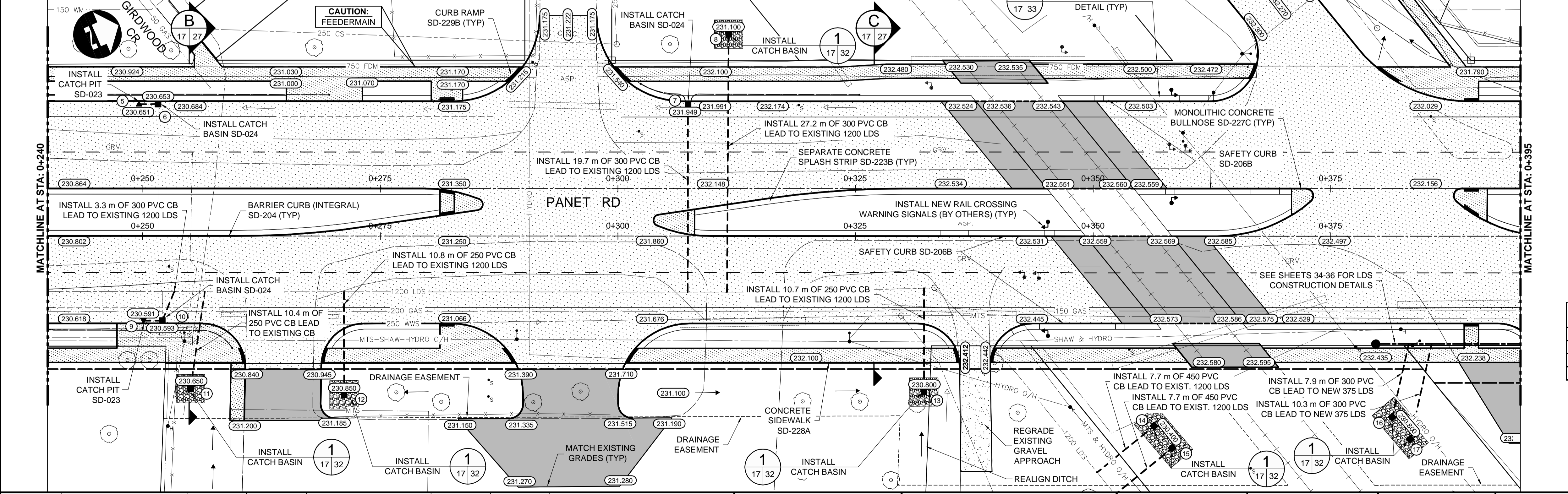
METRIC

WHOLE NUMBERS INDICATE MILLIMETRES
DECIMALIZED NUMBERS INDICATE METRES

WARNING

IF POWER EQUIPMENT OR EXPLOSIVES ARE TO BE USED FOR EXCAVATION ON THIS PROJECT THE CONTRACTOR MUST:

- NOTIFY THE GAS COMPANY OF THE PROPOSED LOCATION OF EXCAVATION.
- TAKE PRECAUTION TO AVOID DAMAGE TO GAS COMPANY INSTALLATIONS SEE PROVINCIAL REGULATION 210/72 FOR DETAILS.
- OBTAIN EXCAVATION PERMITS PRIOR TO CONSTRUCTION.



#	DESCRIPTION	RIM ELEV.	BTM ELEV.	LEAD INV.
5	CATCH PIT - SB GUTTER	230.651	229.751	229.751
6	CATCH BASIN - SB GUTTER	230.653	228.393	228.993
7	CATCH BASIN - SB GUTTER	231.949	229.689	230.289
8	CATCH BASIN - WEST BLVD	231.100	228.840	229.440

APEGM
Certificate of Authorization
Dillon Consulting Limited (MB)
No. 1789 Date: 12/16/2013

EXISTING	LEGEND-PLAN	PROPOSED	EXISTING	LEGEND-PLAN	PROPOSED	EXISTING	LEGEND-PROFILE	PROPOSED
150 WM	WATERMAIN	150 WM	HYDRO	HYDRO	150 WM	WATERMAIN	150 WM	WATERMAIN
300 LDS	LAND DRAINAGE SEWER	300 LDS	250 WWS	WASTE WATER SEWER	250 WWS	WASTE WATER SEWER	300 LDS	LAND DRAINAGE SEWER
250 WWS	WASTE WATER SEWER	250 WWS	MANHOLE	MANHOLE	MANHOLE	MANHOLE	MANHOLE	MANHOLE
○	CATCH BASIN	○	○	CATCH BASIN	○	CATCH BASIN	○	CATCH BASIN
▽	CURB INLET	▽	▽	CURB INLET	▽	CURB INLET	▽	CURB INLET
□	JUNCTIONS	□	□	JUNCTIONS	□	JUNCTIONS	□	JUNCTIONS
○	CULVERT	○	○	CULVERT	○	CULVERT	○	CULVERT
100 GAS	GAS	100 GAS	100 GAS	GAS	100 GAS	GAS	100 GAS	GAS

UNDERGROUND STRUCTURES

SUPPLY	U/G STRUCTURES	DATE
3	ISSUED FOR TENDER	12/16/13
2	ISSUED FOR REVIEW	07/22/13
1	ISSUED FOR REVIEW	06/21/13

LOCATION OF UNDERGROUND STRUCTURES AS SHOWN ARE BASED ON THE BEST INFORMATION AVAILABLE, BUT NO GUARANTEE IS GIVEN THAT ALL EXISTING UTILITIES ARE SHOWN OR THAT THE GIVEN LOCATIONS ARE EXACT. CONFIRMATION OF EXISTENCE AND EXACT LOCATION OF ALL SERVICES MUST BE OBTAINED FROM THE INDIVIDUAL UTILITIES BEFORE PROCEEDING WITH CONSTRUCTION.

DESIGNED BY	JMS/MRD
DRAWN BY	TJH
CHECKED BY	JNC
APPROVED BY	DPK
HOR. SCALE	1:250
VERTICAL	1:10
RELEASED FOR CONSTRUCTION	DATE

DILLON CONSULTING

ENGINEER'S SEAL
PROVINCE OF MANITOBA
J.N. CRANG
REGISTERED PROFESSIONAL ENGINEER
12/16/2013

THE CITY OF WINNIPEG
PUBLIC WORKS DEPARTMENT

PANET ROAD/MOLSON STREET
RECONSTRUCTION AND TWINNING

CITY DRAWING NUMBER: P-3350-17
SHEET 17 OF 45
CONSULTANT DRAWING NUMBER

PLAN-PROFILE - PANET-MOLSON - STA. 0+245 TO 0+340 (SOUTHBOUND)

CONSULTANT PROJECT NUMBER: 12-7055

G:\CAD\127055\02-Civil\01-Contract\03-Plan-Profile-Panet.dwg