

- CONSTRUCTION NOTES:**
- ALL DIMENSIONS ARE TO BACK OF CURB.
  - ISOLATE MISCELLANEOUS ITEMS IN NEW CONCRETE WORKS AS PER SD-228C.
  - LEGAL PLAN AND UNDERGROUND INFORMATION FROM CITY OF WINNIPEG LBIS.
  - CONTRACTOR TO TAKE PRECAUTIONARY STEPS TO AVOID DAMAGE FROM CONSTRUCTION ACTIVITIES TO TREES WITHIN THE LIMITS OF CONSTRUCTION.
  - LOCATION OF EXISTING SERVICES TO BE CONFIRMED IN THE FIELD BY THE CONTRACTOR.
  - CB LEADS TO BE INSTALLED AT MIN. 1.0% SLOPE OR AS DIRECTED BY CONTRACT ADMINISTRATOR.
  - ADJUST EXISTING CATCH BASINS AND MANHOLES AND ISOLATE AS PER SD-220A.
  - PROTECT EXISTING LEGAL PINS IN NEW PAVEMENT UTILIZING A WATER VALVE INSERT. GRIND OFF SYMBOL ON COVER.
  - SEE P-3350-27 THROUGH 31 FOR TYPICAL CROSS-SECTIONS.
  - CONTRACTOR SHALL INSTALL MODIFIED BARRIER CURB (SD-203B) ON ALL PRIVATE APPROACH AND PUBLIC APPROACH RADII AS IDENTIFIED BY THE CONTRACT ADMINISTRATOR.
  - CONTRACTOR SHALL CONSTRUCT BARRIER CURB INTEGRAL WITH CONCRETE SLAB (SD-204) AND SEPARATE CONCRETE SPLASH STRIP (SD-223B) ON ALL SECTIONS OF ROADWAY WHERE THE CURB IS PARALLEL TO THE ROADWAY BASELINE GEOMETRY.
  - CONCRETE PAVEMENT IN MINOR STREET APPROACHES, PRIVATE APPROACHES AND MEDIAN OPENINGS SHALL BE HAND PLACED WITH INTEGRAL CURB CONSTRUCTION (SD-203A OR SD-203B AS SPECIFIED). MAIN LINE CONCRETE PAVEMENT SHALL BE SLIP FORMED UNLESS OTHERWISE REQUIRED DUE TO TRAFFIC STAGING RESTRICTIONS.
  - INSTALL 150 mm SUB DRAIN IN BOTH DIRECTIONS OF CATCH BASINS ALONG PAVEMENT EDGE AS PER SD-245 AND CAP ENDS.

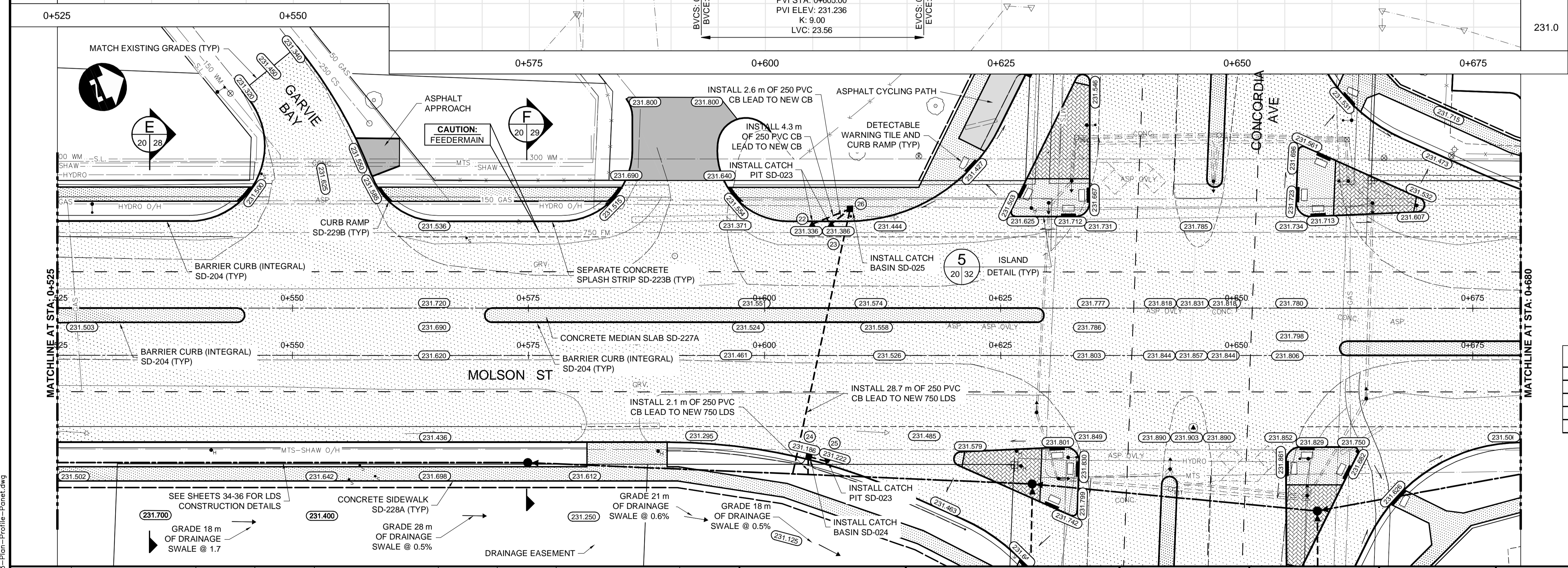
**METRIC**

WHOLE NUMBERS INDICATE MILLIMETRES  
DECIMALIZED NUMBERS INDICATE METRES

**WARNING**

IF POWER EQUIPMENT OR EXPLOSIVES ARE TO BE USED FOR EXCAVATION ON THIS PROJECT THE CONTRACTOR MUST:

- NOTIFY THE GAS COMPANY OF THE PROPOSED LOCATION OF EXCAVATION.
- TAKE PRECAUTION TO AVOID DAMAGE TO GAS COMPANY INSTALLATIONS SEE PROVINCIAL REGULATION 210/72 FOR DETAILS.
- OBTAIN EXCAVATION PERMITS PRIOR TO CONSTRUCTION.



#	DESCRIPTION	RIM ELEV.	BTM ELEV.	LEAD INV.
22	CATCH PIT - SB GUTTER	231.336	230.436	230.436
23	CATCH PIT - SB GUTTER	231.386	230.486	230.486
24	CATCH BASIN - NB GUTTER	231.186	228.926	229.526
25	CATCH PIT - NB GUTTER	231.422	230.522	230.522
26	CATCH BASIN - WEST BLVD	0.000	-2.260	-1.660

EXISTING	LEGEND-PLAN	PROPOSED	EXISTING	LEGEND-PLAN	PROPOSED	EXISTING	LEGEND-PROFILE	PROPOSED
150 WM	WATERMAIN	150 WM	HYDRO	HYDRO	150 WM	WATERMAIN	150 WM	WATERMAIN
300 LDS	HYDRANT VALVE	300 LDS	MTS	MTS	300 LDS	HYDRANT VALVE	300 LDS	HYDRANT VALVE
250 WWS	LAND DRAINAGE SEWER	250 WWS	CONCRETE	CONCRETE	250 WWS	WASTE WATER SEWER	250 WWS	WASTE WATER SEWER
300 LDS	WASTE WATER SEWER	300 LDS	ASPHALT	ASPHALT	300 LDS	LAND DRAINAGE SEWER	300 LDS	LAND DRAINAGE SEWER
250 WWS	MANHOLE	250 WWS	PLANING	PLANING	250 WWS	WASTE WATER SEWER	250 WWS	WASTE WATER SEWER
300 LDS	CATCH BASIN	300 LDS	SIDEWALK	SIDEWALK	300 LDS	WASTE WATER SEWER	300 LDS	WASTE WATER SEWER
250 WWS	CURB INLET	250 WWS	PAVING STONES	PAVING STONES	250 WWS	WASTE WATER SEWER	250 WWS	WASTE WATER SEWER
300 LDS	JUNCTIONS	300 LDS	PARTIAL DEPTH REPAIR	PARTIAL DEPTH REPAIR	300 LDS	WASTE WATER SEWER	300 LDS	WASTE WATER SEWER
250 WWS	CULVERT	250 WWS	PROPERTY LINE	PROPERTY LINE	250 WWS	WASTE WATER SEWER	250 WWS	WASTE WATER SEWER
100 GAS	GAS	100 GAS	DRAINAGE ARROW	DRAINAGE ARROW	100 GAS	WASTE WATER SEWER	100 GAS	WASTE WATER SEWER
150 WM	EXISTING	150 WM	CURB RAMP	CURB RAMP	150 WM	WASTE WATER SEWER	150 WM	WASTE WATER SEWER

**UNDERGROUND STRUCTURES**

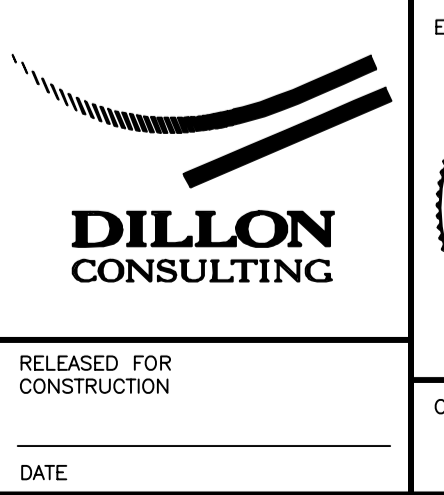
SUPPLY, U/G STRUCTURES DATE

NO.	REVISIONS	DATE	BY
3	ISSUED FOR TENDER	12/16/13	JNC
2	ISSUED FOR REVIEW	07/22/13	JNC
1	ISSUED FOR REVIEW	06/21/13	JNC

LOCATION OF UNDERGROUND STRUCTURES AS SHOWN ARE BASED ON THE BEST INFORMATION AVAILABLE BUT NO GUARANTEE IS GIVEN THAT ALL EXISTING UTILITIES ARE SHOWN OR THAT THE GIVEN LOCATIONS ARE EXACT. CONFIRMATION OF EXISTENCE AND EXACT LOCATION OF ALL SERVICES MUST BE OBTAINED FROM THE INDIVIDUAL UTILITIES BEFORE PROCEEDING WITH CONSTRUCTION.

B.M. ELEV.	DESIGNED BY	DRAWN BY	CHECKED BY	APPROVED BY
	JMS/MRD	TJH	JNC	DPK

HOR. SCALE	VERTICAL	RELEASED FOR CONSTRUCTION	CONSULTANT PROJECT NUMBER
1:250	1:10		12-7055



**THE CITY OF WINNIPEG**  
PUBLIC WORKS DEPARTMENT

Winnipeg

PANET ROAD/MOLSON STREET  
RECONSTRUCTION AND TWINNING

CITY DRAWING NUMBER: P-3350-20  
SHEET 20 OF 45  
CONSULTANT DRAWING NUMBER

PLAN PROFILE - PANET-MOLSON - STA. 0+525 TO 0+680

G:\CAD\127055\02-Civil\01-Contract\03-Plan-Profile-Panet.dwg