

APEGM
 Certificate of Authorization
Dillon Consulting Limited (MB)
 No. 1789 Date: 12/16/2013

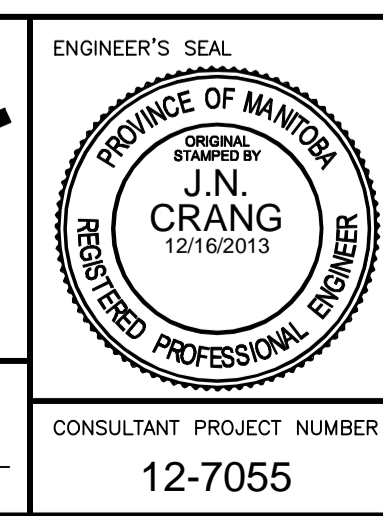
G:\CAD\127055\02-Civil\01-Layouts\02-Print-Layouts.dwg

150 WM	WATERMAIN	150 WM	HYDRO	HYDRO	HYDRO	150 WM	WATERMAIN	150 WM
	HYDRANT		MTS	MTS	MTS		HYDRANT	
	VALVE						VALVE	
300 LDS	LAND DRAINAGE SEWER	300 LDS				300 LDS	LAND DRAINAGE SEWER	300 LDS
250 WWS	WASTE WATER SEWER	250 WWS				250 WWS	WASTE WATER SEWER	250 WWS
	MANHOLE						MANHOLE	
	CATCH BASIN						CATCH BASIN	
	CURB INLET						CURB INLET	
	JUNCTIONS						JUNCTIONS	
	CULVERT						CULVERT	
100 GAS	GAS	100 GAS				100 GAS	GAS	100 GAS
EXISTING	LEGEND-PLAN	PROPOSED	EXISTING	LEGEND-PLAN	PROPOSED	EXISTING	LEGEND-PROFILE	PROPOSED

UNDERGROUND STRUCTURES	
SUPV. U/G STRUCTURES	DATE

B.M. ELEV.	NO.	REVISIONS	DATE	BY

DESIGNED BY	JMS/MRD
DRAWN BY	TJH
CHECKED BY	JNC
APPROVED BY	DPK
HOR. SCALE	1:200
VERTICAL	
DATE	12/16/2013



THE CITY OF WINNIPEG
 PUBLIC WORKS DEPARTMENT

Winnipeg

PANET ROAD/MOLSON STREET
 RECONSTRUCTION AND TWINNING

CITY DRAWING NUMBER: P-3350-40
 SHEET OF: 40 OF 45
 CONSULTANT DRAWING NUMBER

CONCRETE JOINT LAYOUT (1 OF 6)

CONSULTANT PROJECT NUMBER: 12-7055

LOCATION OF UNDERGROUND STRUCTURES AS SHOWN ARE BASED ON THE BEST INFORMATION AVAILABLE. BUT NO GUARANTEE IS GIVEN THAT ALL EXISTING UTILITIES ARE SHOWN OR THAT THE GIVEN LOCATIONS ARE EXACT. CONFIRMATION OF EXISTENCE AND EXACT LOCATION OF ALL SERVICES MUST BE OBTAINED FROM THE INDIVIDUAL UTILITIES BEFORE PROCEEDING WITH CONSTRUCTION.