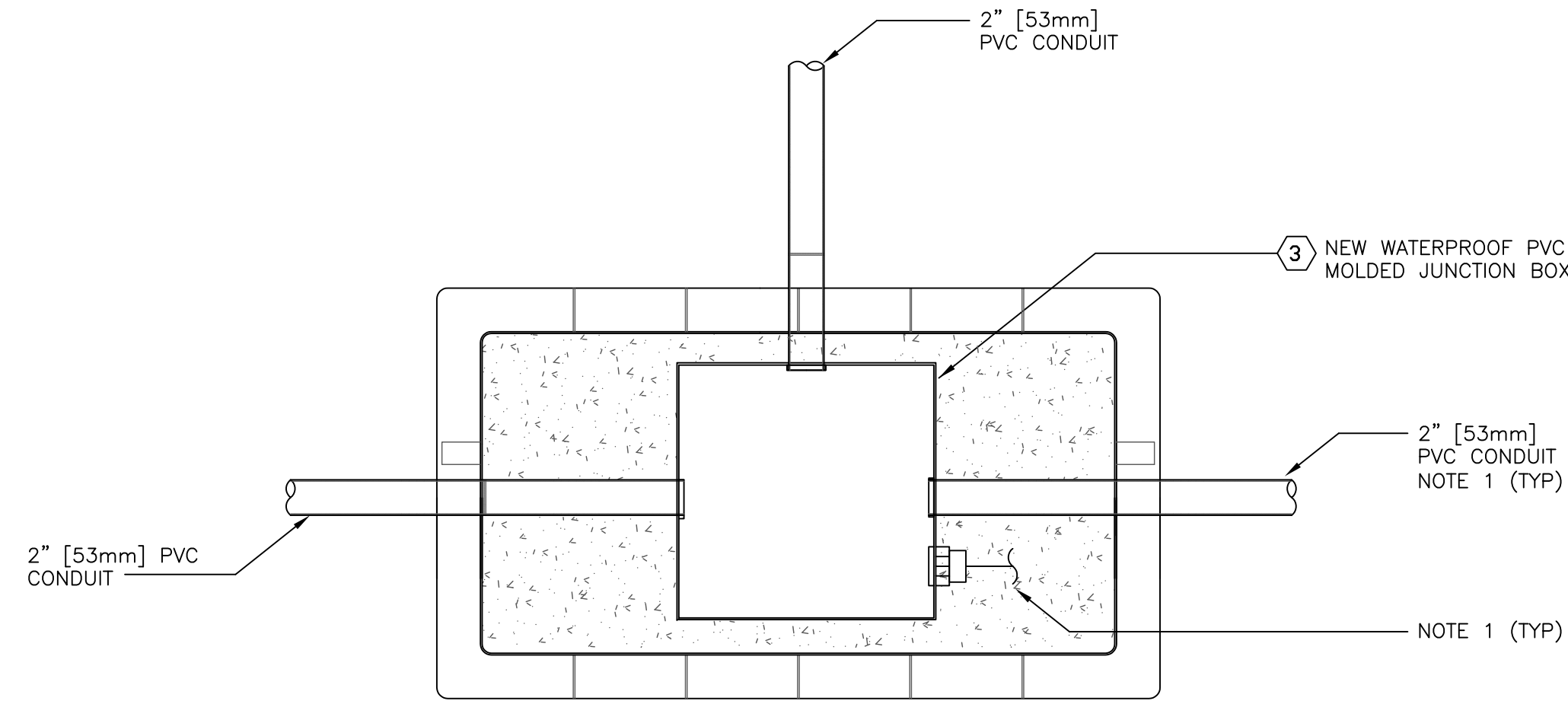
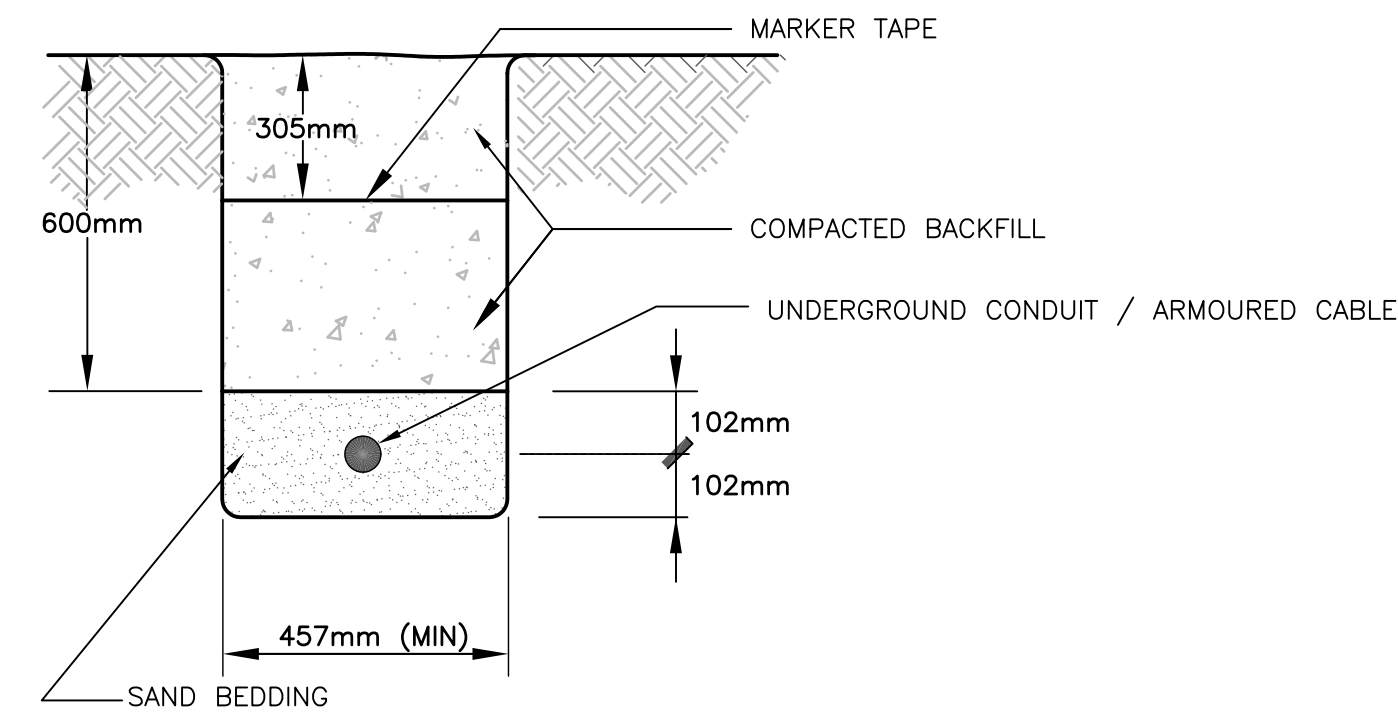


File Name: P:\Projects\2013\13-0109-001\Doc\Control\ToBeIssued\DWG\13-0109-001\_E03-Rev. 0.dwg - Tab: E03 Plotted By: DDeroche 14/04/15 [Tue 3:23pm]



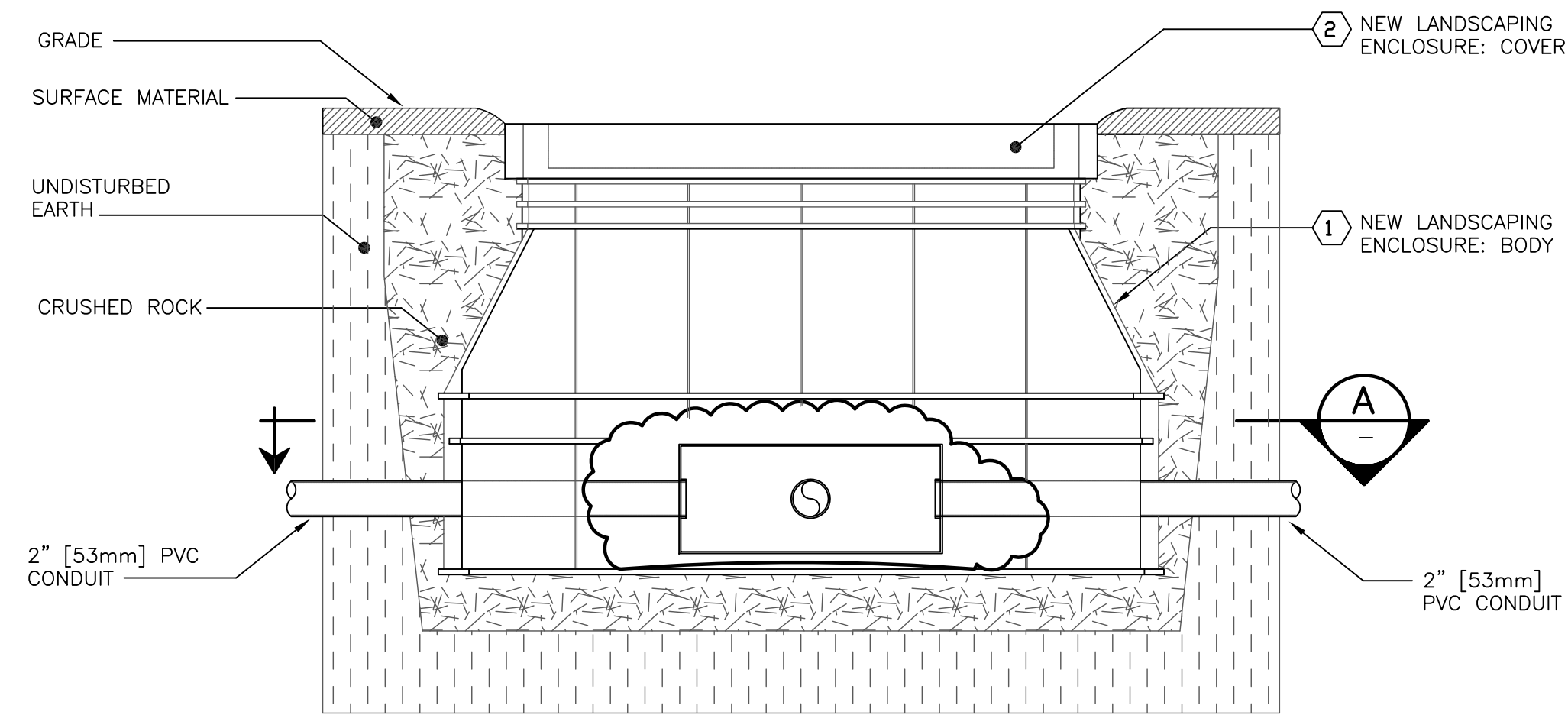
**(A)** JUNCTION BOX PLAN  
SCALE: N.T.S.



**(C)** TRENCH DETAIL  
SCALE: N.T.S.



**NOTES:**

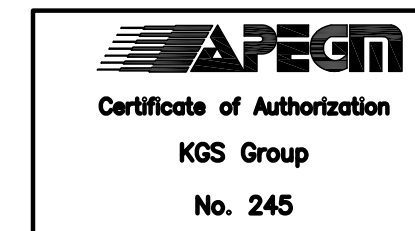
- JUNCTION BOX IS TYPICAL. ACTUAL BOX SHALL HAVE CONNECTIONS MATCHING CONDUITS AND CABLES AND HAVE INTERNAL TERMINAL BLOCKS FOR TERMINATING ALL CABLES.



**(B)** JUNCTION BOX ELEVATION  
SCALE: N.T.S.

TAG NUMBER	DESCRIPTION	ACCEPTABLE MANUFACTURER	DESCRIPTION
①	LANDSCAPING ENCLOSURE - BODY	CARSON INDUSTRIES	SERIES 1730 - 17"x30" HDPE ENCLOSURE
②	LANDSCAPING ENCLOSURE - COVER	CARSON INDUSTRIES	SERIES 1730 FLUSH SOLID COVER C/W 3/8" HEX BOLT FASTERS
③	PVC MOLDED JUNCTION BOX	IPEX	16" x 16" x 5" MINIMUM

0	14/04/14	ISSUED FOR TENDER	AP
NO.	YY/MM/DD	DESCRIPTION	BY
REVISIONS / ISSUE			
CLIENT:			
 <small>TEL: 204 922-3444 3-10 MARKET AVENUE WINNIPEG, MB, CANADA</small>			
PROJECT:			
<b>PEGUIS PAVILION POND REDEVELOPMENT &amp; LANDSCAPE RENOVATIONS</b>			
DWG. DESCRIPTION:			
<b>ELECTRICAL DETAILS</b>			
	DESIGN BY:	CLS	DATE: 14/03/12
	DESIGN CHECK:	AP	DATE: 14/04/11
	DRAWN BY:	CBW	DATE: 14/03/19
	DWG. CHECK:	DAL	DATE: 14/04/11
DWG. NO.		13-0109-001 E03	
REV.		0	



ENG. STAMP