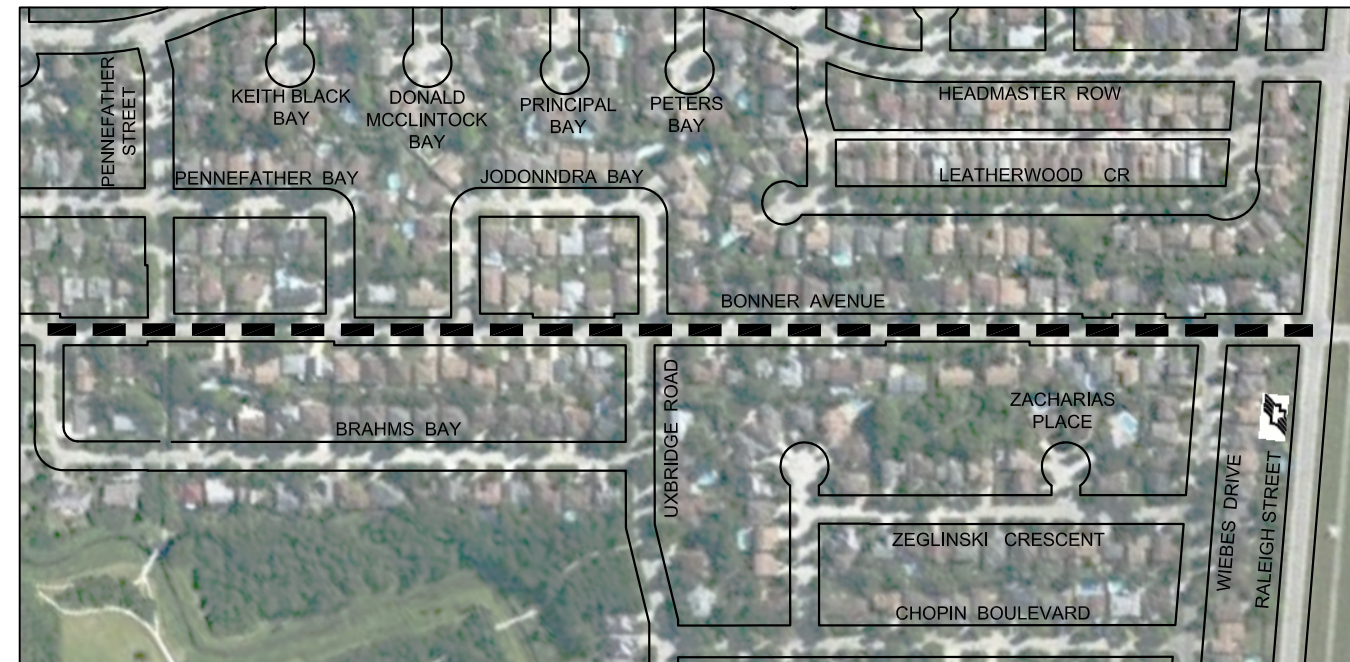


Jun 27, 2013 - 2:43pm
P:\5513001-5513099\5513066 - 2013 Thin Bituminous Overlay Program\MMM Drawings\Contract 1\Drawings\Contract 1 dwgs\331-2013.1-01 to 05\140613.dwg - tab:05

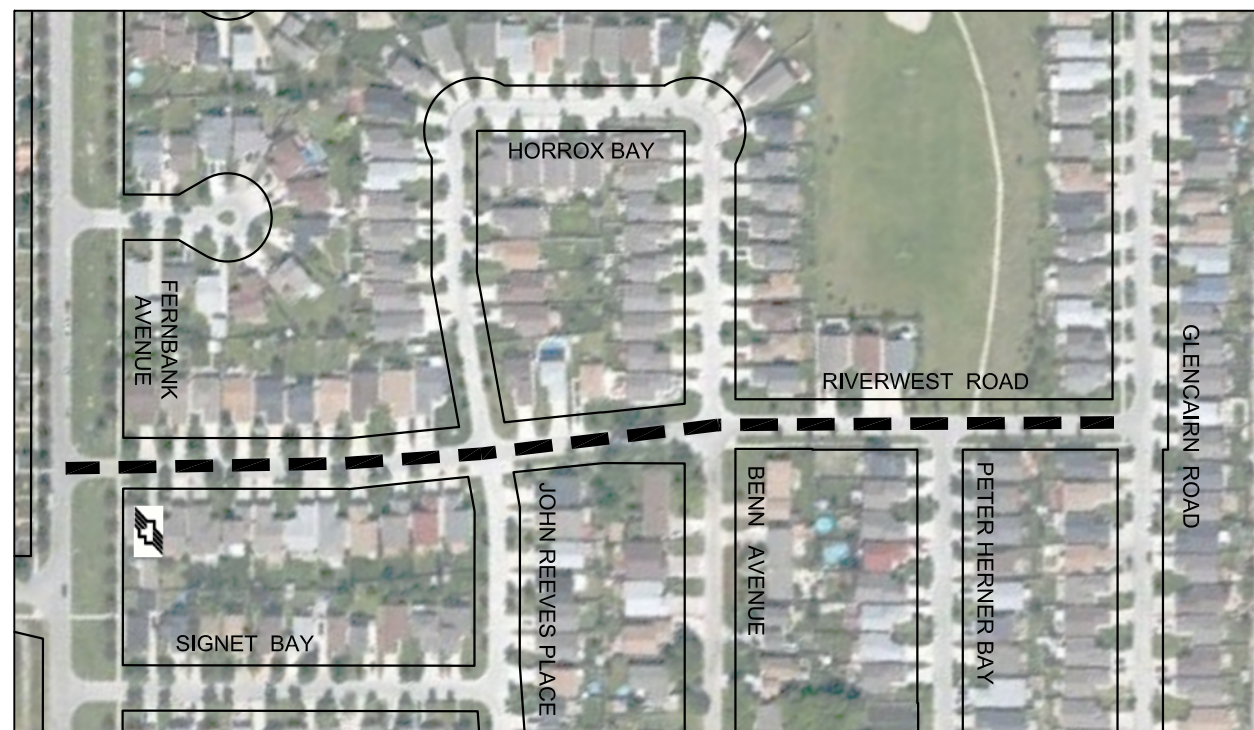


GATEWAY ROAD - HEADMASTER ROW / KNOWLES AVENUE



BONNER AVENUE - BRAHMS BAY / RALEIGH STREET

SCALE 1:4000



RIVERWEST ROAD - GLENCAIRN ROAD / FERNBANK AVENUE



RED OAK DRIVE - STEFANIE DRIVE / MOLSON STREET



METRIC
WHOLE NUMBERS INDICATE MILLIMETRES
DECIMALIZED NUMBERS INDICATE METRES

LEGEND

- LIMIT OF CONSTRUCTION
- BUS ROUTE
- SCHOOL LOCATION

LOCATIONS APPROVED

UNDERGROUND STRUCTURES

SIGNED BY: _____

SUPV U/G STRUCTURES DATE _____

LOCATION OF UNDERGROUND STRUCTURES AS SHOWN ARE BASED ON THE BEST INFORMATION AVAILABLE BUT NO GUARANTEE IS GIVEN THAT ALL EXISTING UTILITIES ARE SHOWN OR THAT THE GIVEN LOCATIONS ARE EXACT CONFIRMATION OF EXISTENCE AND EXACT LOCATION OF ALL SERVICES MUST BE OBTAINED FROM THE INDIVIDUAL UTILITIES BEFORE PROCEEDING

G.B.M. - ELEV. -

NO.	REVISIONS	DATE	BY
1	ISSUED FOR CONSTRUCTION	13/07/05	VMM
2			
3			

MMM GROUP
MMM Group Limited
Suite 111 - 93 Lombard Ave.
Winnipeg, MB R3B 3B1
T. 204.943.3178
F. 204.943.4948
www.mmm.ca

DESIGNED BY	TR	CHECKED BY	JEC
DRAWN BY	TR	APPROVED BY	VMM
HOR. SCALE	1:3000	RELEASED FOR CONSTRUCTION	-
VERTICAL	-	DATE	13/07/05

ENGINEER'S SEAL
PROVINCE OF MANITOBA
REGISTERED PROFESSIONAL ENGINEER
V.M. MAROTI
Member 30809
CONSULTANT ACAD DWG. NO.
331-2013.1-05

THE CITY OF WINNIPEG
PUBLIC WORKS DEPARTMENT
ENGINEERING DIVISION

2013 THIN BITUMINOUS OVERLAY (TBO) PROGRAM

GATEWAY ROAD, BONNER AVENUE, RIVERWEST ROAD, RED OAK DRIVE

CITY DRAWING NO.	
SHEET	5 OF 5
DRAWING NO.	05
REV.	0

NOTE: These design documents are prepared solely for the use by the party with whom the design professional has entered into a contract and there are no representations of any kind made by the design professional to any party with whom the design professional has not entered into a contract.