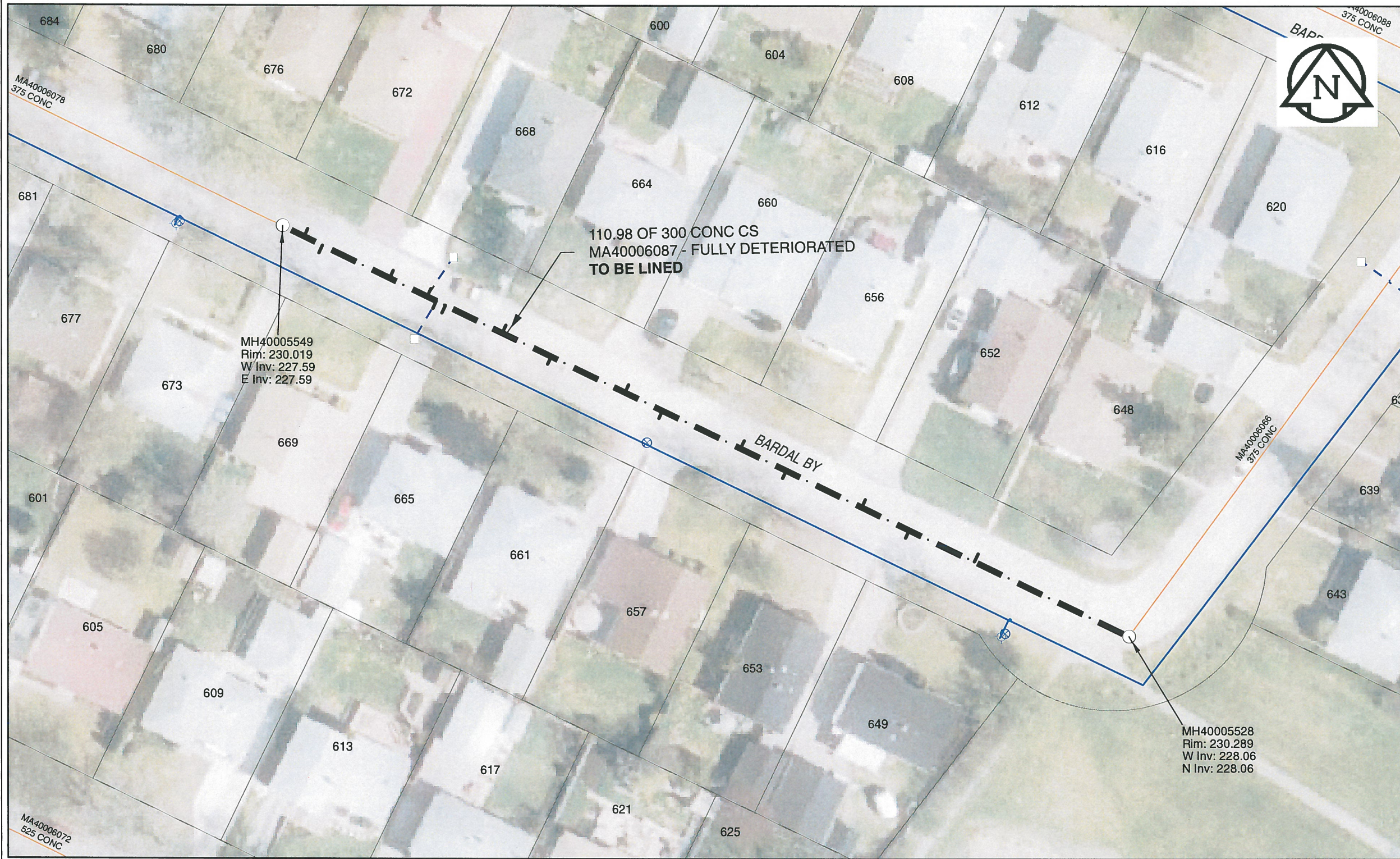


B SIZE 11" X 17" (279mm x 432mm)



Sewer Junction Information
(From Video Inspection)

| Reference MH | Distance | Size | Clock |
|--------------|----------|------|-------|
| S-MH40005528 | 020.5 | 150 | 02 |
| - | 029.1 | 150 | 10 |
| - | 035.3 | 150 | 02 |
| - | 045.2 | 150 | 10 |
| - | 051.2 | 150 | 02 |
| - | 061.4 | 150 | 10 |
| - | 066.3 | 150 | 02 |
| - | 076.0 | 150 | 09 |
| - | 082.4 | 150 | 03 |
| - | 089.9 | 150 | 10 |
| - | 091.1 | 150 | 10 |
| - | 092.3 | 150 | 02 |
| - | 097.2 | 150 | 02 |
| - | 106.0 | 150 | 10 |
| - | 108.4 | 150 | 02 |

WARNING
IF POWER EQUIPMENT OR EXPLOSIVES ARE TO BE USED FOR EXCAVATION ON THIS PROJECT, THE CONTRACTOR MUST:
1) NOTIFY THE GAS COMPANY OF THE PROPOSED LOCATION OF EXCAVATION.
2) TAKE PRECAUTION TO AVOID DAMAGE TO GAS COMPANY INSTALLATIONS.
SEE PROVINCIAL REGULATION 140/92 FOR DETAILS

AECOM
Certificate of Authorization
AECOM Canada Ltd.
No. 4671 Date: Nov. 28/2013

METRIC
WHOLE NUMBERS INDICATE MILLIMETRES
DECIMALIZED NUMBERS INDICATE METRES
0 2.5 5 10 15 20
Meters

BID OPPORTUNITY NO. 679-2013

AECOM REVIEW DRFT CHK

FILE NAME: 2013.pdf Saved By: CM

LOCATION APPROVED UNDERGROUND STRUCTURES

| SUPR. U/G STRUCTURES | DATE |
|----------------------|------|
| | |

NOTE:
LOCATION OF UNDERGROUND STRUCTURES AS SHOWN ARE BASED ON THE BEST INFORMATION AVAILABLE. BUT NO GUARANTEE IS GIVEN THAT ALL EXISTING UTILITIES ARE SHOWN OR THAT THE GIVEN LOCATIONS ARE EXACT. CONFIRMATION OF EXISTENCE AND EXACT LOCATION OF ALL SERVICES MUST BE OBTAINED FROM THE INDIVIDUAL UTILITIES BEFORE PROCEEDING WITH CONSTRUCTION.

Can-Net GPS Reference Station WINN/810

| NO. | REVISIONS | YY/MM/DD | BY |
|-----|-------------------------|----------|----|
| 0 | ISSUED FOR CONSTRUCTION | 13/11/29 | |

AECOM

| | | | |
|-------------|-------|---------------------------|--------------------|
| DESIGNED BY | PL | CHECKED BY | <i>[Signature]</i> |
| DRAWN BY | JD | APPROVED BY | <i>[Signature]</i> |
| HOR. SCALE | 1:500 | RELEASED FOR CONSTRUCTION | <i>[Signature]</i> |
| VERT. SCALE | N/A | DATE | 11-27-13 |

PROFESSIONAL'S SEAL
PROVINCE OF MANITOBA
K.W. FITCHETT
REGISTERED ENGINEER
CONSULTANT DRAWING NO. 60250984-01-C-2013-R0X.mxd

THE CITY OF WINNIPEG WATER AND WASTE DEPARTMENT

2013 SEWER RENEWALS BY CIPP LINING CONTRACT 11 BARDAL BY

1ST MH E OF DE GRAFF PL ON BARDAL BY TO 2ND MH E OF DE GRAFF PL

SHEET 4 OF 41
CITY DRAWING NUMBER **10533** REV 0