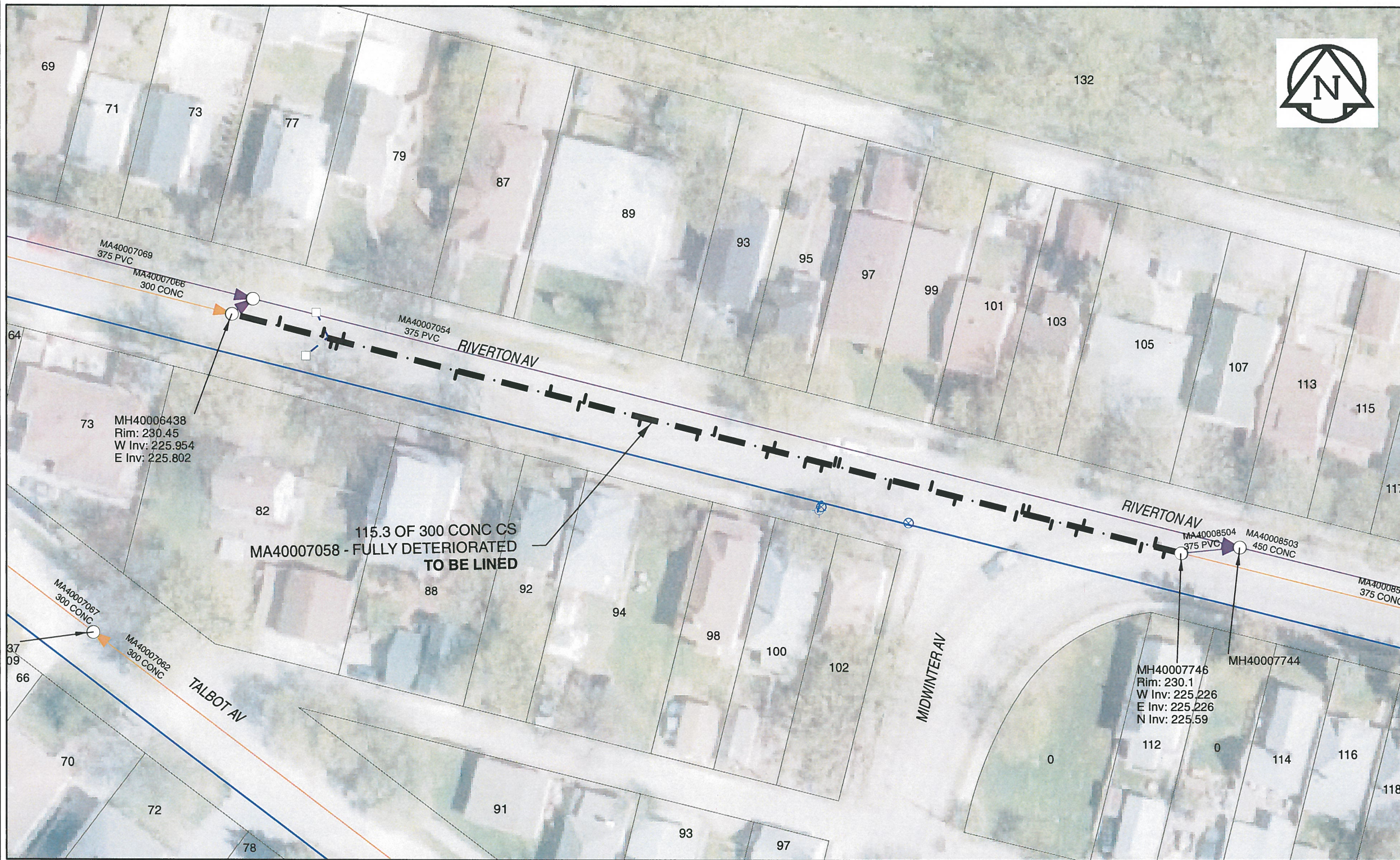


B SIZE 11" X 17" (279mm x 432mm)



Sewer Junction Information

(From Video Inspection)

Reference MH	Distance	Size	Clock
S-MH40006438	005.7	150	10
-	011.0	150	11
-	012.2	150	01
-	012.5	150	02
-	013.4	150	11
-	027.4	150	01
-	038.6	150	11
-	042.3	150	01
-	042.8	150	11
-	049.8	150	01
-	056.8	150	01
-	058.7	150	11
-	065.3	150	01
-	065.9	150	11
-	069.9	150	02
-	071.9	150	02
-	073.3	150	11
-	073.8	150	11
-	080.2	150	01
-	085.0	150	11
-	088.1	150	01
-	095.5	150	01
-	096.1	150	11
-	096.8	150	11
-	099.8	150	01
-	102.9	150	01
-	103.5	150	11
-	110.7	150	01
-	112.2	150	11
-	113.5	150	01

WARNING

IF POWER EQUIPMENT OR EXPLOSIVES ARE TO BE USED FOR EXCAVATION ON THIS PROJECT, THE CONTRACTOR MUST:
 1) NOTIFY THE GAS COMPANY OF THE PROPOSED LOCATION OF EXCAVATION.
 2) TAKE PRECAUTION TO AVOID DAMAGE TO GAS COMPANY INSTALLATIONS.
 SEE PROVINCIAL REGULATION 140/92 FOR DETAILS



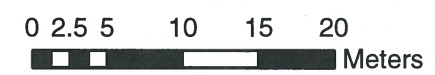
Certificate of Authorization

AECOM Canada Ltd.

No. 4671 Date: Nov. 28/2013

METRIC

WHOLE NUMBERS INDICATE MILLIMETRES
 DECIMALIZED NUMBERS INDICATE METRES



BID OPPORTUNITY NO. 679-2013

LOCATION APPROVED UNDERGROUND STRUCTURES

SUPR. U/G STRUCTURES COMMITTEE DATE

NOTE:
 LOCATION OF UNDERGROUND STRUCTURES AS SHOWN ARE BASED ON THE BEST INFORMATION AVAILABLE. BUT NO GUARANTEE IS GIVEN THAT ALL EXISTING UTILITIES ARE SHOWN OR THAT THE GIVEN LOCATIONS ARE EXACT. CONFIRMATION OF EXISTENCE AND EXACT LOCATION OF ALL SERVICES MUST BE OBTAINED FROM THE INDIVIDUAL UTILITIES BEFORE PROCEEDING WITH CONSTRUCTION.

Can-Net GPS Reference Station WINN/810

NO.	REVISIONS	YY/MM/DD	BY
0	ISSUED FOR CONSTRUCTION	13/11/29	

AECOM

DESIGNED BY	PL	CHECKED BY	<i>[Signature]</i>
DRAWN BY	JD	APPROVED BY	<i>[Signature]</i>
HOR. SCALE	1:500	RELEASED FOR CONSTRUCTION	<i>[Signature]</i>
VERT. SCALE	N/A	DATE	11-27-13

PROFESSIONAL'S SEAL

CONSULTANT DRAWING NO.
 60250984-01-C-2013-R0X.mxd

THE CITY OF WINNIPEG WATER AND WASTE DEPARTMENT

2013 SEWER RENEWALS BY CIPP LINING CONTRACT 11 RIVERTON AV

1ST MH E OF TALBOT AV ON RIVERTON AV TO 1ST MH E OF MIDWINTER AV

SHEET 10 OF 41

CITY DRAWING NUMBER **10539** REV 0

AECOM REVIEW DRFT CHK

FILE NAME: 2013.pdf Saved By: CM