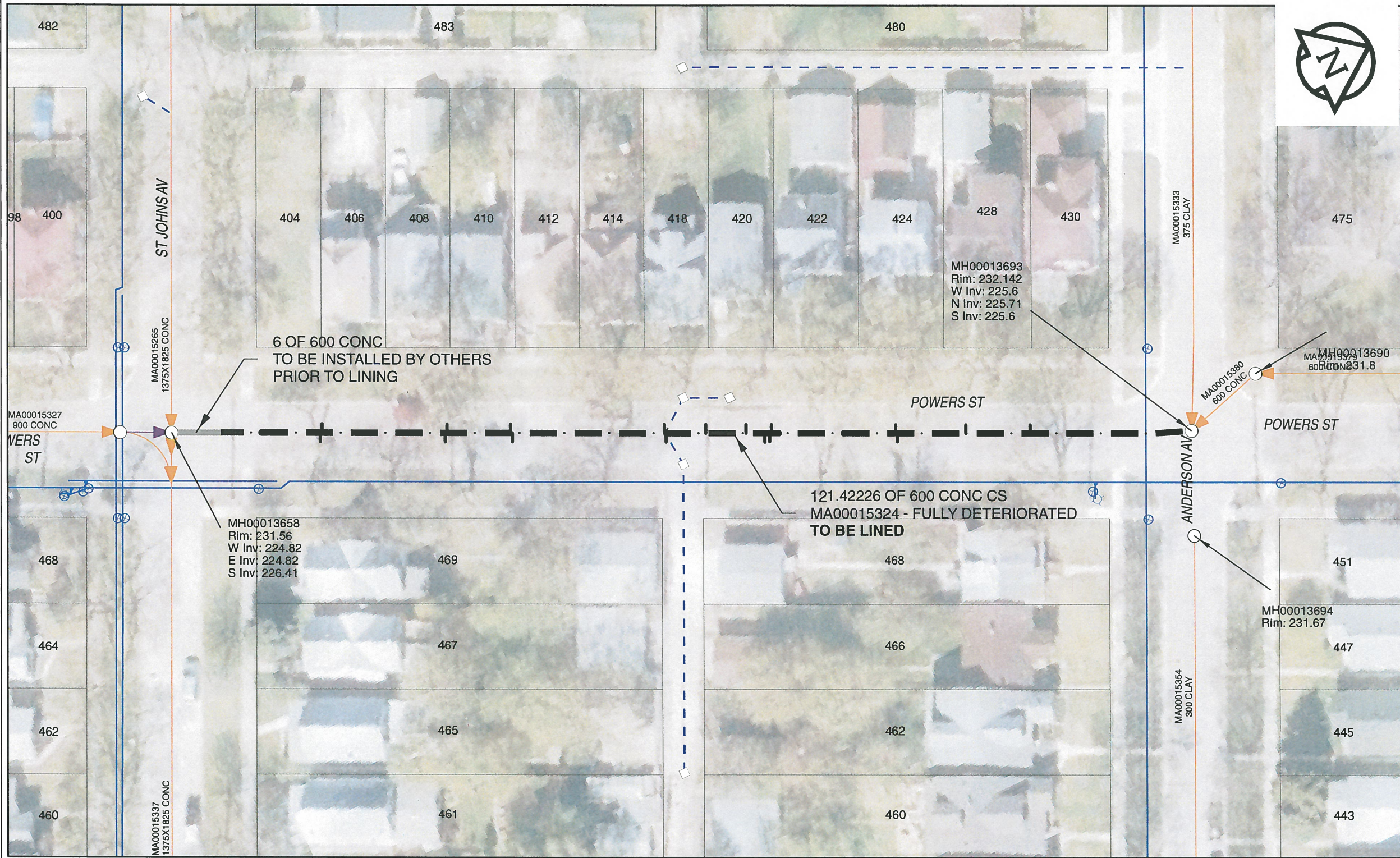


B SIZE 11" X 17" (279mm x 432mm)



Sewer Junction Information
(From Video Inspection)

Reference MH	Distance	Size	Clock
S-MH00013693	019.1	050	01
-	026.7	250	01
-	034.9	250	11
-	034.9	250	01
-	049.8	150	01
-	049.8	150	11
-	050.0	250	11
-	052.7	150	01
-	057.5	150	01
-	062.3	150	01
-	062.3	150	11
-	080.5	250	11
-	080.5	250	01
-	088.2	250	01
-	088.2	250	11
-	103.0	250	11
-	103.0	250	01

WARNING
IF POWER EQUIPMENT OR EXPLOSIVES ARE TO BE USED FOR EXCAVATION ON THIS PROJECT, THE CONTRACTOR MUST:
1) NOTIFY THE GAS COMPANY OF THE PROPOSED LOCATION OF EXCAVATION.
2) TAKE PRECAUTION TO AVOID DAMAGE TO GAS COMPANY INSTALLATIONS.
SEE PROVINCIAL REGULATION 140/92 FOR DETAILS

APEGM
Certificate of Authorization
AECOM Canada Ltd.
No. 4671 Date: *Nov. 28/2013*

METRIC
WHOLE NUMBERS INDICATE MILLIMETRES
DECIMALIZED NUMBERS INDICATE METRES

0 2.5 5 10 15 20
Meters

BID OPPORTUNITY NO. 679-2013

AECOM REVIEW DRFT CHK FILE NAME: 2013.pdf Saved By: CM

LOCATION APPROVED UNDERGROUND STRUCTURES			
Can-Net GPS Reference Station WINN/810			
SUPR. U/G STRUCTURES COMMITTEE	DATE		
NOTE: LOCATION OF UNDERGROUND STRUCTURES AS SHOWN ARE BASED ON THE BEST INFORMATION AVAILABLE. BUT NO GUARANTEE IS GIVEN THAT ALL EXISTING UTILITIES ARE SHOWN OR THAT THE GIVEN LOCATIONS ARE EXACT. CONFIRMATION OF EXISTENCE AND EXACT LOCATION OF ALL SERVICES MUST BE OBTAINED FROM THE INDIVIDUAL UTILITIES BEFORE PROCEEDING WITH CONSTRUCTION.			
0	ISSUED FOR CONSTRUCTION	13/11/29	
NO.	REVISIONS	YY/MM/DD	BY

AECOM

DESIGNED BY	PL	CHECKED BY	<i>Heid</i>
DRAWN BY	JD	APPROVED BY	<i>SJ</i>
HOR. SCALE	1:500	RELEASED FOR CONSTRUCTION	<i>13/11/29</i>
VERT. SCALE	N/A	DATE	<i>13/11/29</i>

PROFESSIONAL'S SEAL
PROVINCE OF MANITOBA
K.W. FITCHETT
REGISTERED ENGINEER
CONSULTANT DRAWING NO. 60250984-01-C-2013-R0X.mxd

THE CITY OF WINNIPEG WATER AND WASTE DEPARTMENT

2013 SEWER RENEWALS BY CIPP LINING CONTRACT 11 POWERS ST
1ST MH S OF ANDERSON AV ON POWERS ST TO BEND AT ST JOHN'S AV

SHEET	41 OF 41
CITY DRAWING NUMBER	10617 REV 0