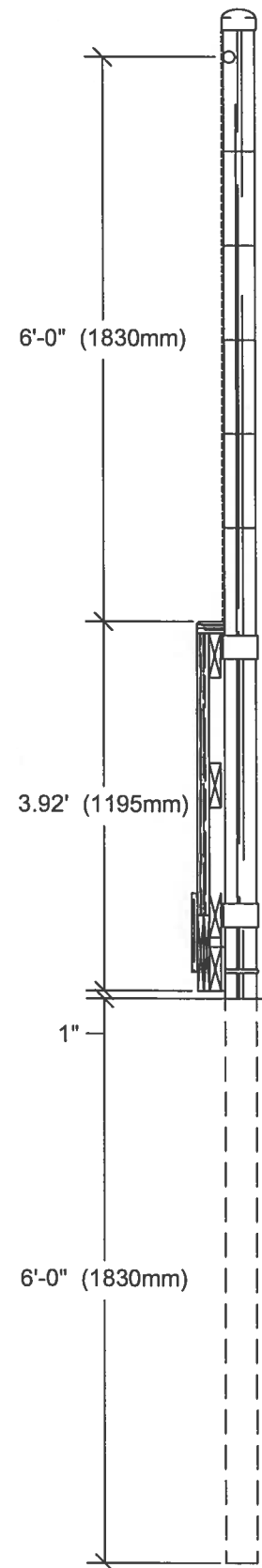


Determine location of underground utilities before proceeding with construction. Location of underground structures as shown are based on best information available, but no guarantee is given that all existing utilities are shown and exact locations of all underground including connections must be checked with the utility concerned before proceeding with construction.



1 1/2" TOP RAIL WELDED TO UPRIGHT POSTS. RAILS TO BE HAMMERED FLAT AND WELDED TO UPRIGHTS. PROVIDE CLEAN SURFACE. APPLY GALVALENE.

3 1/2" (89mm) DIAMETER O.D. SCHEDULE 40 STEEL PIPE PUSHED 6' (1.83m) INTO GROUND. UPRIGHT STEEL POSTS TO BE PLUMBED TO 5mm IN 3050mm.

9 GAUGE CHAIN LINK SCREENING WITH TOP & BOTTOM SELVAGE KNUCKLED. ALL CHAIN LINK CONSTRUCTION TO CONFORM WITH THE CITY OF WINNIPEG STANDARD CONSTRUCTION SPECIFICATION CW 3550.

WIRE TIES AT 1' (300mm) O.C. (TYP.)

2 x 4 PRESSURE TREATED TOP RAIL CHAMFERED CORNER FACING INTERIOR.

3/4" x 1/4" METAL STRAPPING TO BE INTERWOVEN IN CHAIN LINK AND FASTENED TO TOP RAIL AT 8" O.C. - STRAPPING TO BE CONTINUOUS.

POST SLEEVE DETAIL (REFER TO DETAIL 5/A-3).

2 - 3/4" x 6" P.T. FRAMING - ATTACHED TO SLEEVE WITH 1/2" (12mm) CARRIAGE BOLTS.

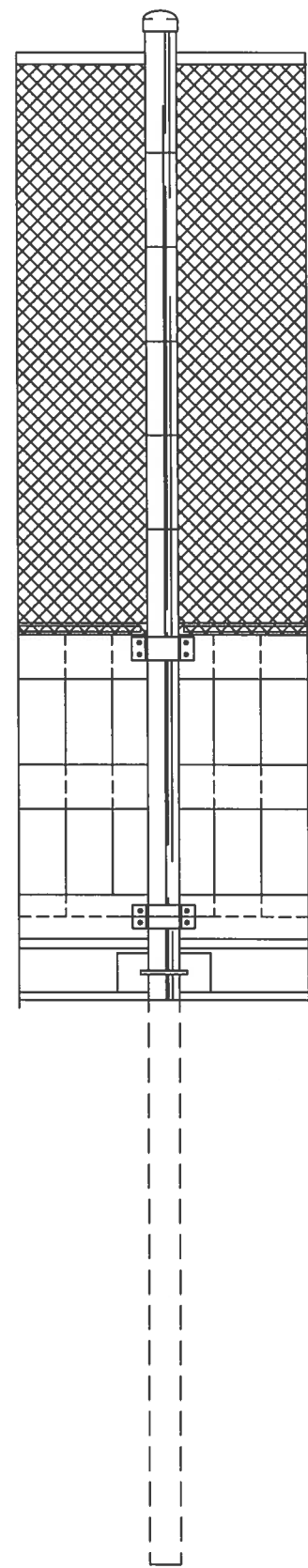
2 x 6 P.T. RINK BOARDS - ATTACH TO FRAMING WITH 3 1/2" (89mm) ARDOX NAILS AND CLINCHED. ALL FASTENERS TO BE GALVANIZED.

2 x 6 P.T. BLOCKING WITH 1" PLYWOOD SPACER - ATTACH TO POST WITH CARRIAGE BOLTS AND METAL STRAPPING.

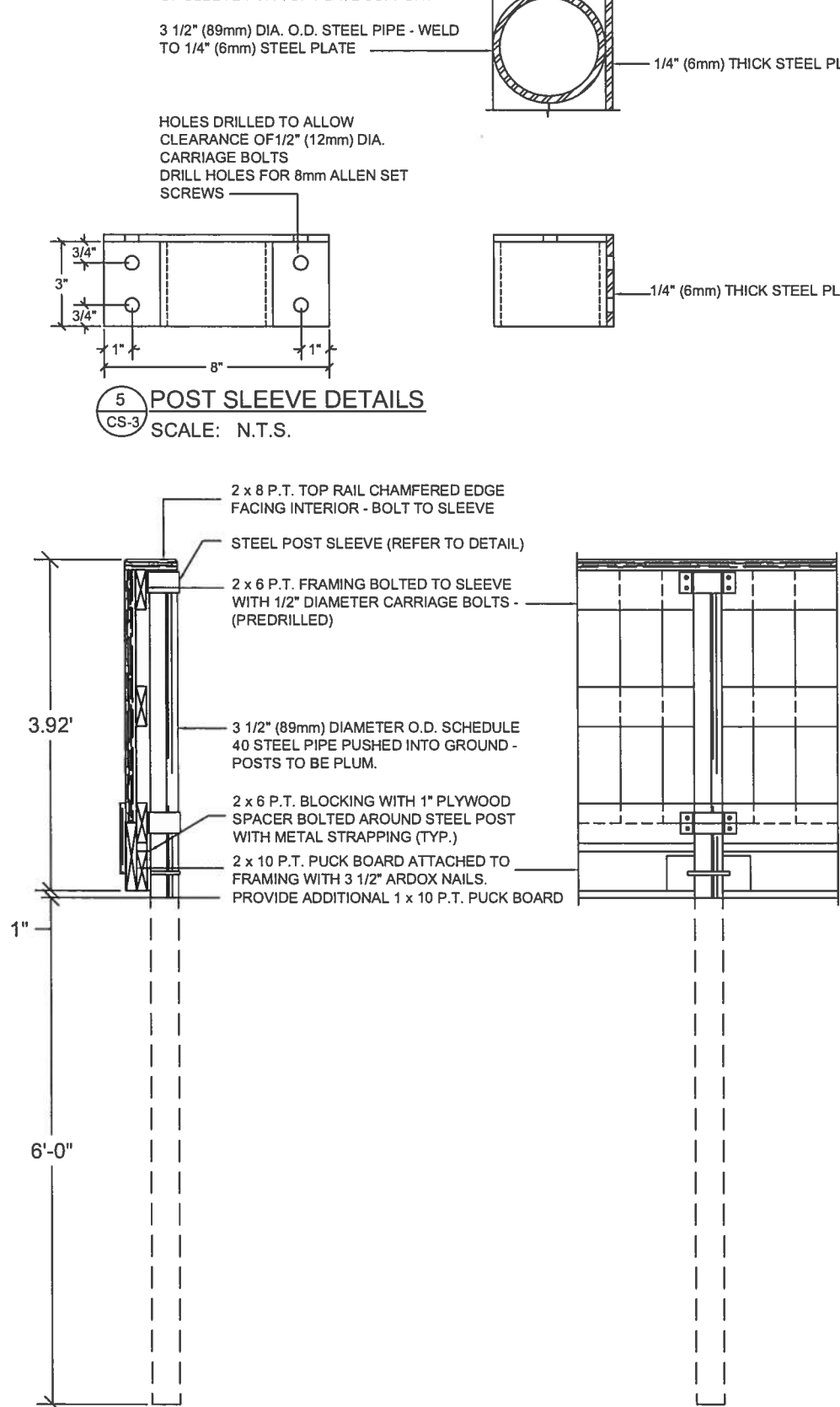
2 - 3/4" x 10" P.T. LAMINATED PUCK BOARDS - END LAPS TO BE STAGGERED. PROVIDE ADDITIONAL 1 x 10 P.T. PUCK BOARD - INSIDE FACE OF HOCKEY PEN

EXISTING GRADE LEVEL

1 SECTION THRU RINK END BOARDS
SCALE: 1/2" = 1'-0"

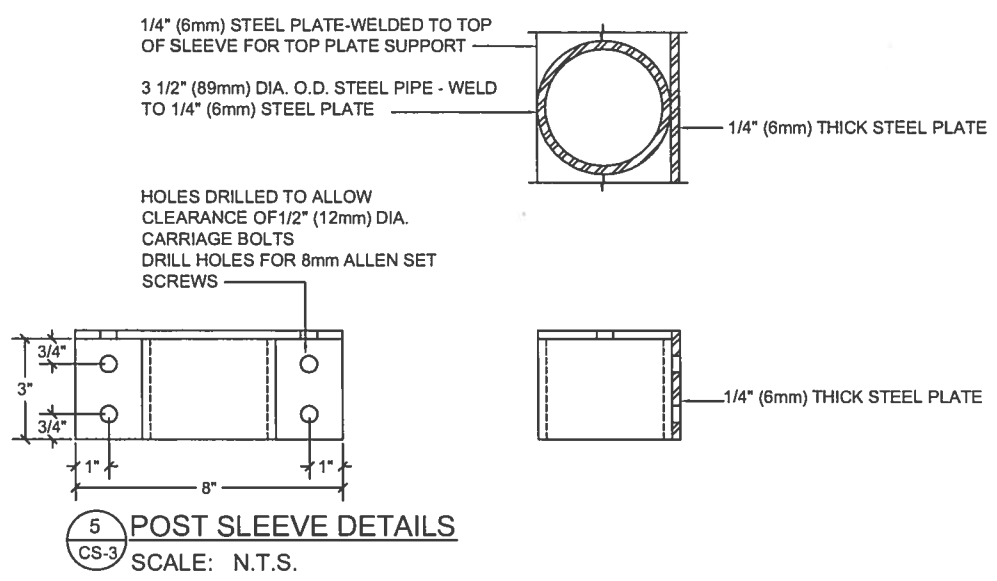


2 ELEVATION - RINK END BOARDS
SCALE: 1/2" = 1'-0"



3 TYPICAL RINK BOARD SECTION
SCALE: 1/2" = 1'-0"

4 ELEVATION - TYPICAL RINK BOARD
SCALE: 1/2" = 1'-0"



5 POST SLEEVE DETAILS
SCALE: N.T.S.

GENERAL

- Drawing should be used as a general guide. Exact size, along with style and location of vehicle gates, access, player's gates, and player's boxes location, grading and lighting requirements to be shown on project site plan.

HOCKEY PEN AND PLAYER'S BOXES

- All post uprights to be minimum 89mm diameter Schedule 40 steel pipes.
- Upright posts to be located as shown on the Drawings. Posts to be pushed into ground and shall be plumb in all directions.
- Vehicle Gates (Option 'B') requires post uprights encased in concrete (gate only).
- All lumber and plywood to be pressure treated (P.T.).
- Lumber with loose knots, surface imperfections or splits will not be accepted.
- All fasteners to be galvanized. Nails to be 89mm Ardox and clinched.
- All carriage bolts, barrel bolts, nuts and washers to be cadmium plated.
- Carriage bolts to be used to fasten wood framing to sleeves and gate hardware.
- All bolt locations to be pre-drilled.
- Nuts on gate hardware to be non-removable.
- Top rail of rink end boards to be 2" x 4" (38 x 89mm) ripped from 2" x 8" (38 x 184mm) pressure treated lumber.
- All hardware to be hot-dipped galvanized after fabrication.
- Player's boxes to be constructed separately from rink.
- Notch top plate of rink boards to fit Player's Box uprights.
- Floor of Player's Boxes to be notched around steel posts. Floor to be flush with back of rink boards.

CHAINLINK SCREENING

- Chainlink screening shall be located at both ends of rinks as shown.
- All chainlink screening to be 9 gauge steel wire woven into 2" (50mm) mesh. Top and bottom selvage shall be knuckled.
- Top rails for screening shall be 1 1/2" (38mm) diameter. Rails to be hammered flat and welded to uprights.
- All welds to be smooth and continuous.
- Posts and rails to be cleaned of all welding residue. Apply Galvalume according to Manufacturer's specifications.
- Mesh to be attached to uprights with wire ties at 1' on center.
- Metal strapping to be interwoven in mesh and secured to top rail with screws at 8" o.c. Strapping to be continuous post to post.
- Chainlink screening to be flush with front of upright.
- Chainlink construction shall be in accordance with City of Winnipeg Standard Construction Specifications CW 3550.

PAINTING

- Inside of rink boards and entire player's boxes shall be painted with two (2) coats of white paint c/w game lines (red & blue).

| NO. | DESCRIPTION | DATE | BY |
|--|-------------|---------------|-------------|
| REVISIONS / ISSUE | | | |
| <p>THE CITY OF WINNIPEG PUBLIC WORKS DEPARTMENT BUILDING SERVICES DIVISION 100 MAIN STREET, MAIN FLOOR WPG, MB. R3C 1A4</p> | | | |
| PROJECT: | | | |
| STANDARD CONSTRUCTION DETAILS FOR OUTDOOR HOCKEY RINKS | | | |
| SHEET TITLE | | | |
| RINK BOARDS ELEVATIONS, SECTIONS & DETAILS | | | |
| ENG. STAMP | PROJECT NO. | DRAWN BY: | CHECKED BY: |
| | | LMC | |
| APPROVED BY: | | | |
| SCALE: | | DATE: | |
| AS NOTED | | JULY 12, 2002 | |
| DWG. NO. | | | REV. |
| CS-3 | | | |